

GENERAL NOTES

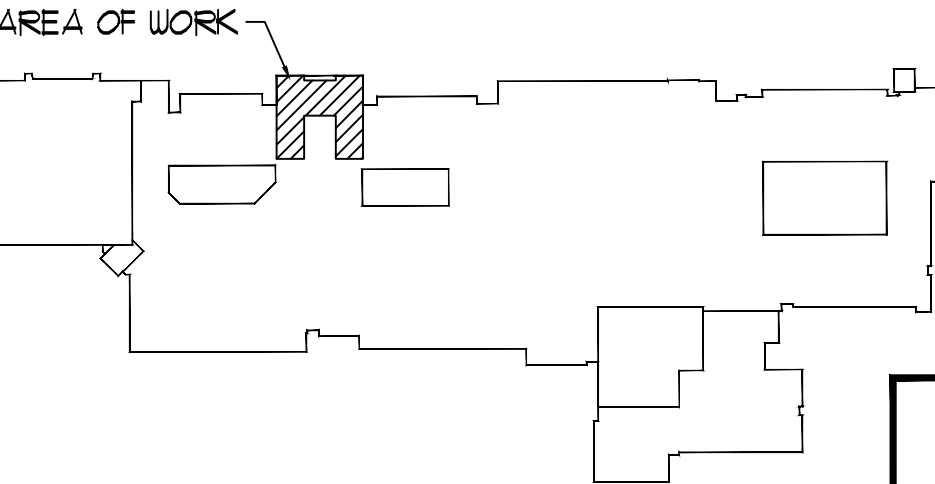
1. ALL WORK SHALL COMPLY WITH LOCAL, MUNICIPAL AND STATE CODES.

LEGEND

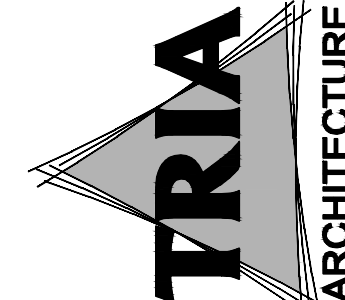
	1-HOUR BUILDING SEPARATION CONSTRUCTION
(XXX)	FIRE RATING OF DOOR ASSEMBLY IN HOURS (ONLY NEW DOORS AND FRAMES ARE LABELED ON PLAN)
EX FEC	EXISTING FIRE EXTINGUISHER CABINET
FE	FIRE EXTINGUISHER
FEC	FIRE EXTINGUISHER CABINET RECESSED IN NEW WALL CONSTRUCTION
	ROOM OCCUPANCY AND EXIT INFORMATION
	EXIT EGRESS
	SAFETY REFERENCE EGRESS PATH AND DISTANCE

OCCUPANCY

ASSISTANT PRINCIPAL'S OFFICE:	2	OCCUPANTS
RECEPTION:		
(2004)	1	OCCUPANTS
(2007)	13	OCCUPANTS
ATHLETIC DIRECTOR'S OFFICE:	3	OCCUPANTS
PRINCIPAL'S OFFICE:	3	OCCUPANTS
CONFERENCE ROOM:		
(2002)	17	OCCUPANTS
EXISTING MECHANICAL:		
(2002)	2	OCCUPANTS
(2003)	2	OCCUPANTS
TOTAL OCCUPANCY - SECOND FL.:	43	OCCUPANTS
TOTAL OCCUPANCY - FIRST FL.:	66	OCCUPANTS
TOTAL OCCUPANCY	109	OCCUPANTS



KEY PLAN
NOT TO SCALE

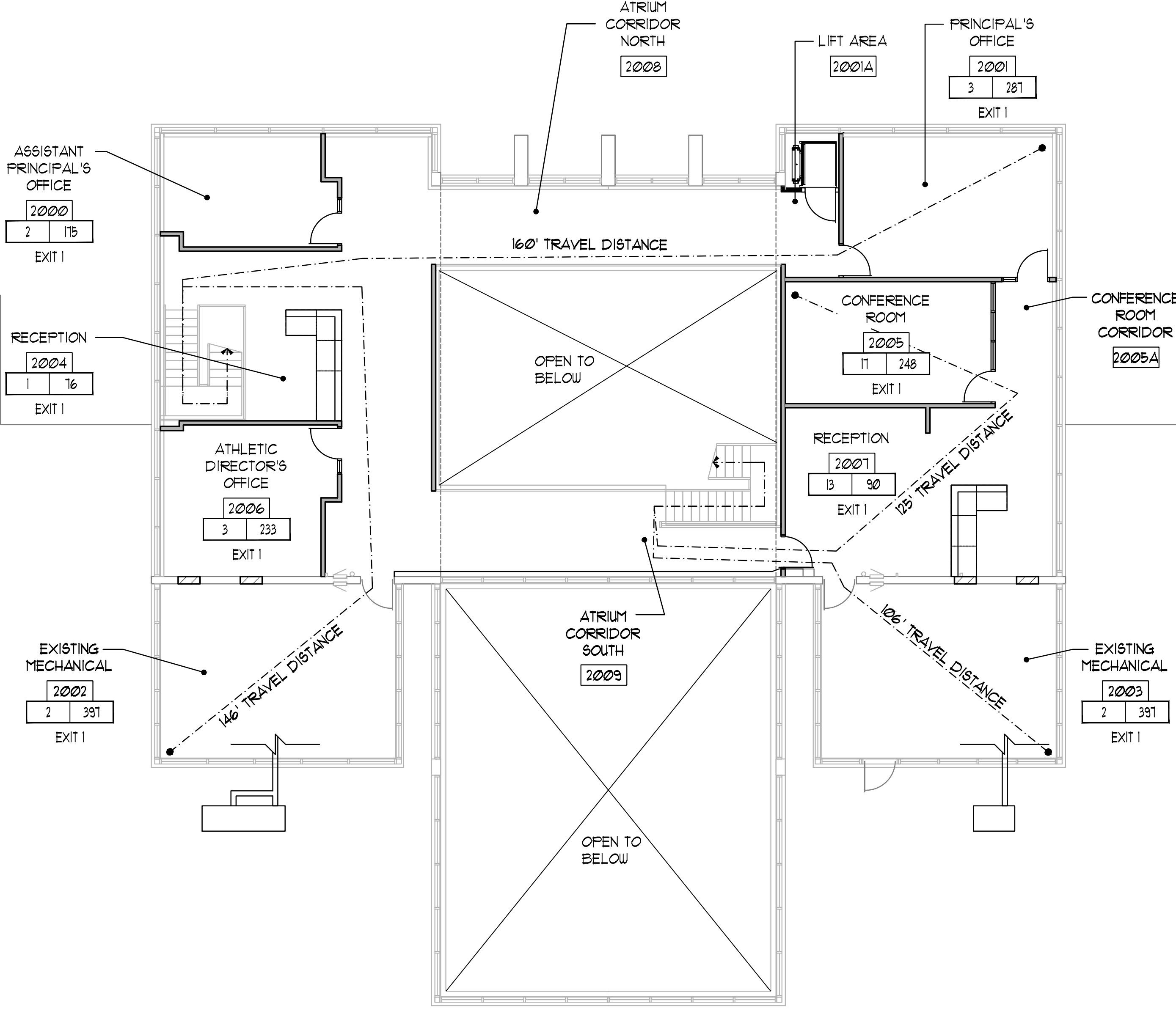


TRIA ARCHITECTURE
OAS, LLC
CONSULTANTS AND ARCHITECTS, LLC
780 EAST 10TH ST. SUITE 200
INDIANAPOLIS, IN 46202
GREENBERG FARROW
STRUCTURAL ENGINEERS
(PI) 841782300
21 SOUTH DEARBORN, SUITE 200
INDIANAPOLIS, IN 46202

DUNELAND SCHOOL CORPORATION
2018 MAIN OFFICE RENOVATIONS AT:
CHESTERTON MIDDLE SCHOOL (CMS)
651 W. MORGAN AVENUE, CHESTERTON, INDIANA 46304

PROJECT NUMBER:	18-003
PROJECT MANAGER:	MS
DRAWN BY:	FSH
ISSUED FOR BIDDING:	07/26/2018
PARTIAL SECOND FLOOR SAFETY REFERENCE PLAN	

AG2.20



1 PARTIAL SECOND FLOOR SAFETY REFERENCE PLAN
1/8" = 1'-0"

