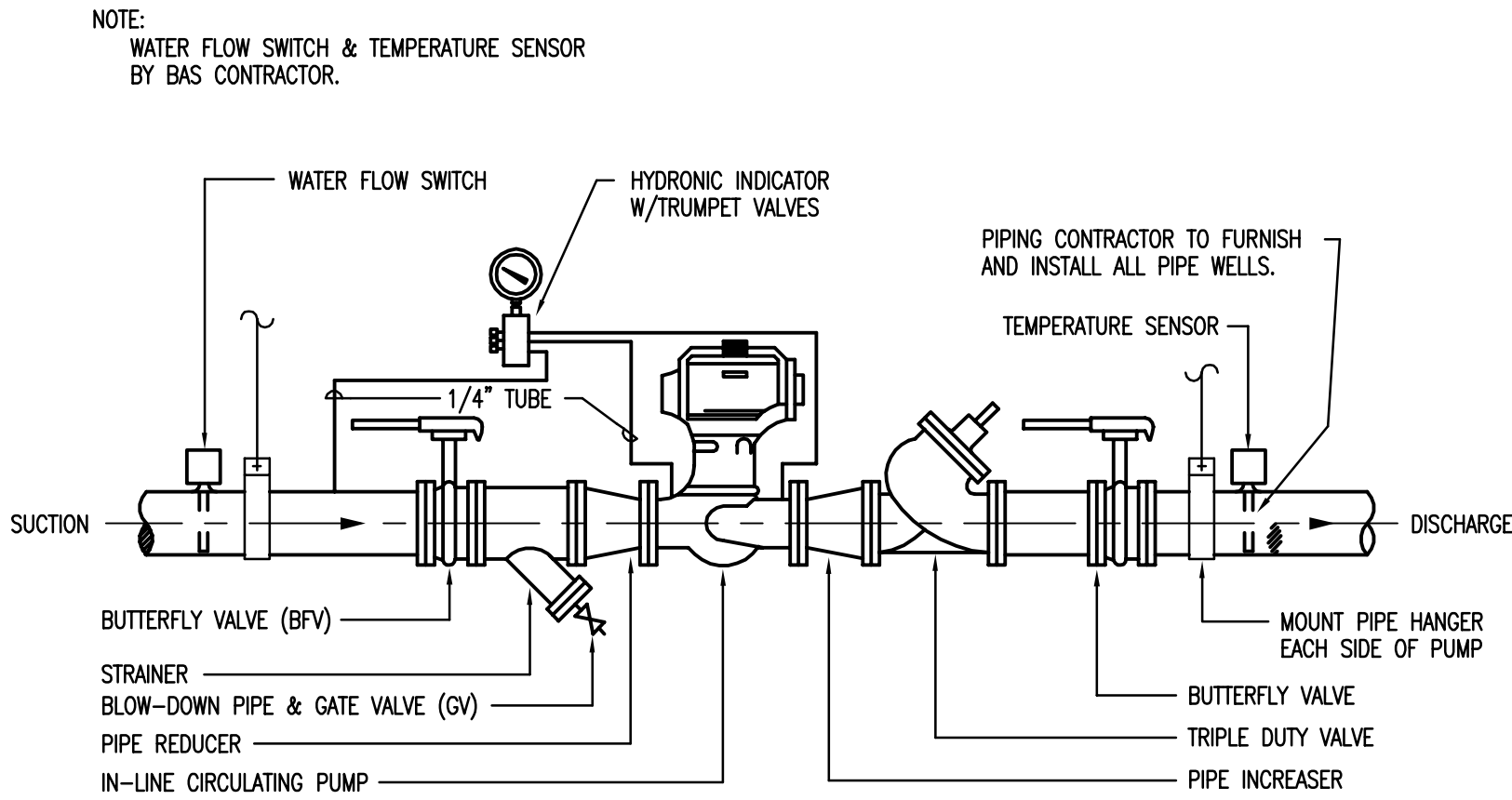
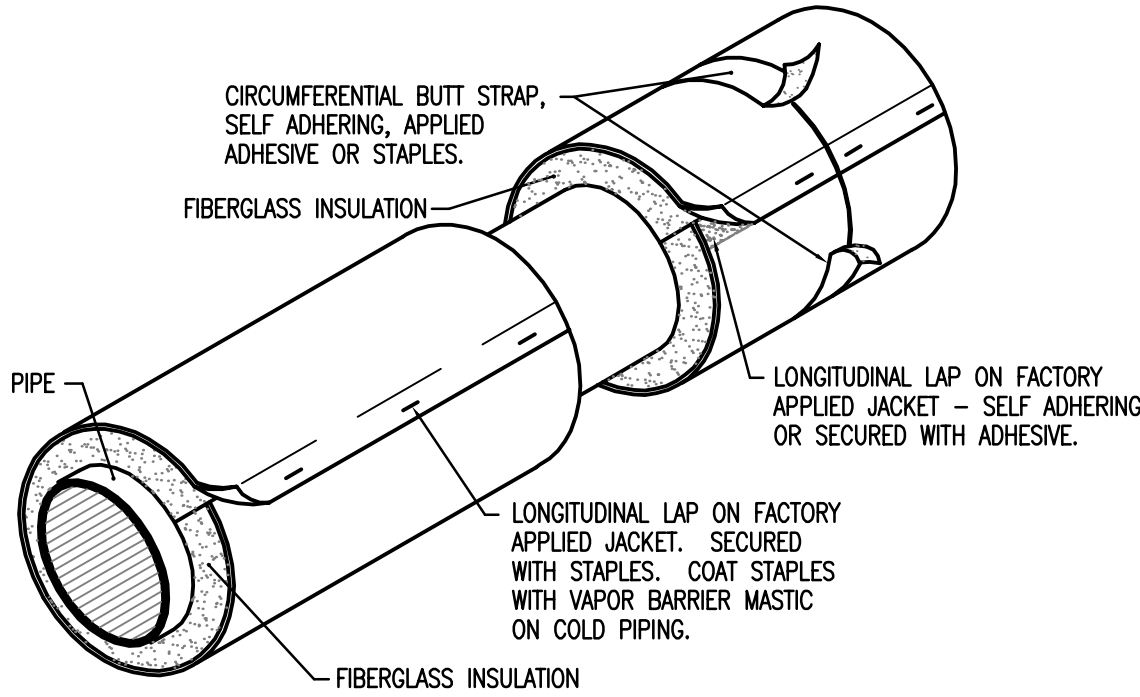


NOTES:  
 1. REFRIGERANT PIPING AS SHOWN IS TO ILLUSTRATE GENERAL REQUIREMENTS. PIPING SHALL BE SIZED, PITCHED, ARRANGED, AND CIRCUITED PER CONDENSING UNIT MANUFACTURER'S RECOMMENDATIONS AND REQUIREMENTS.

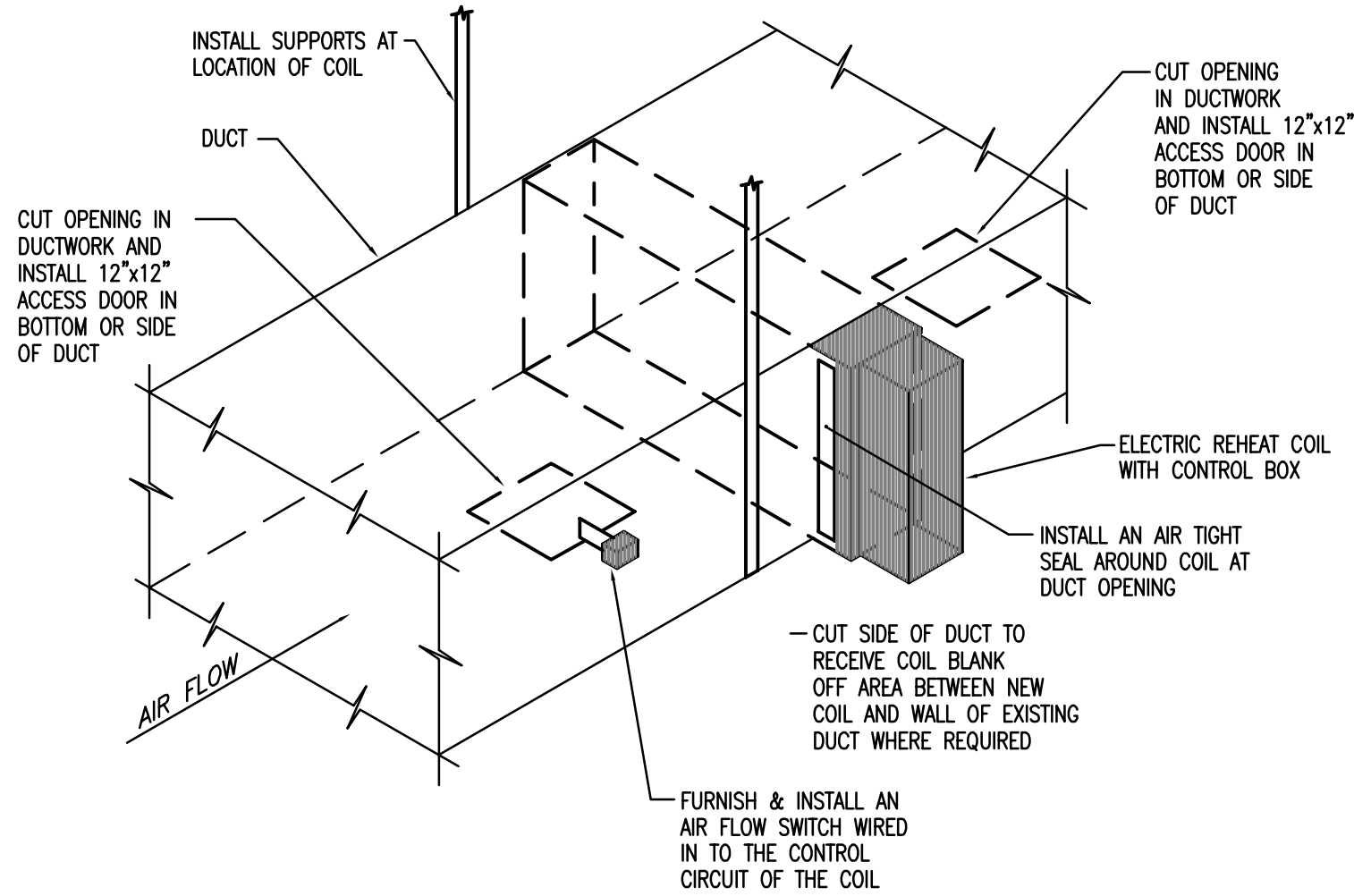
1  
 M4.02  
**REFRIGERANT PIPING DETAIL - ROOF MOUNTED UNIT**  
 NO SCALE



2  
 M4.02  
**IN-LINE PUMP DETAIL**  
 NO SCALE



3  
 M4.02  
**FACTORY-APPLIED NON-METAL JACKETING**  
 NO SCALE



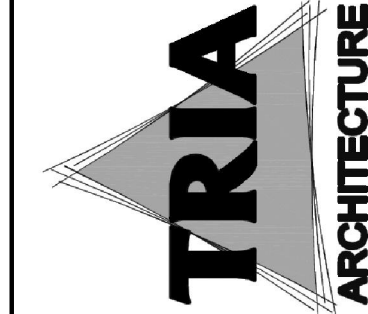
4  
 M4.02  
**SLIP-IN DUCT-MOUNTED ELECTRIC REHEAT COIL DETAIL**  
 NO SCALE

DUNELAND SCHOOL CORPORATION  
 2018 MAIN OFFICE RENOVATIONS AT:  
 CHESTERTON MIDDLE SCHOOL (CMS)  
 651 W. MORGAN AVENUE, CHESTERTON, INDIANA 46304

|                                |           |
|--------------------------------|-----------|
| PROJECT NUMBER: 18-003         | REVISION: |
| PROJECT MANAGER: MGS           |           |
| DRAWN BY: CWS                  |           |
| ISSUED FOR BIDDING: 03/28/2018 |           |
| DETAILS                        |           |
| MECHANICAL                     |           |



M4.02



HEPF CONSULTANT  
 (P) 630.938.996  
 700 N. LAKE DR. UNIT 1, SALEM, INDIANA 46384  
 OAS  
 GreenbergFarrow  
 21 SOUTH EVERGREEN, SUITE 200  
 ARNOLD, INDIANA 46030  
 STRUCTURAL ENGINEERS  
 (P) 817.983.0009