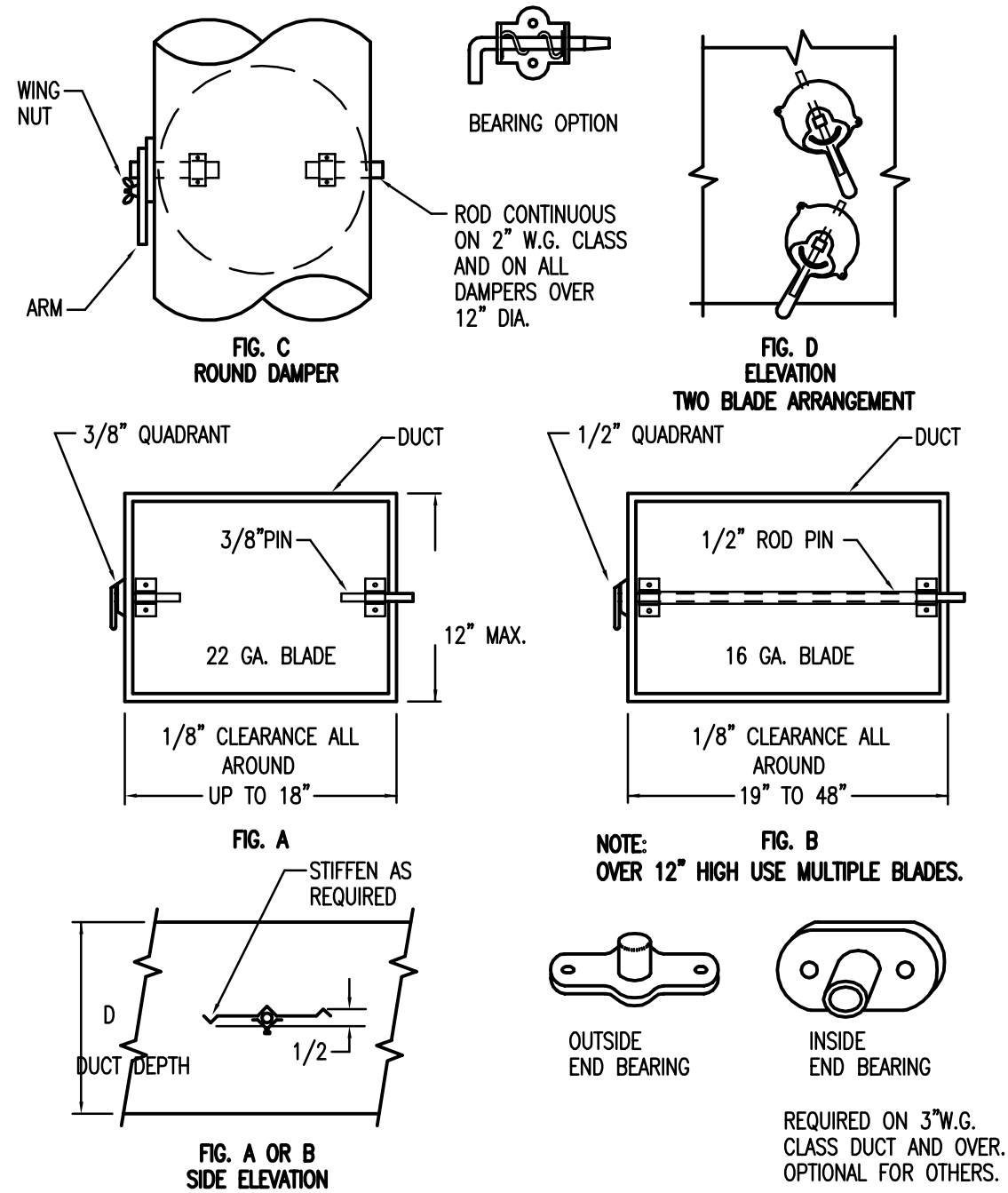
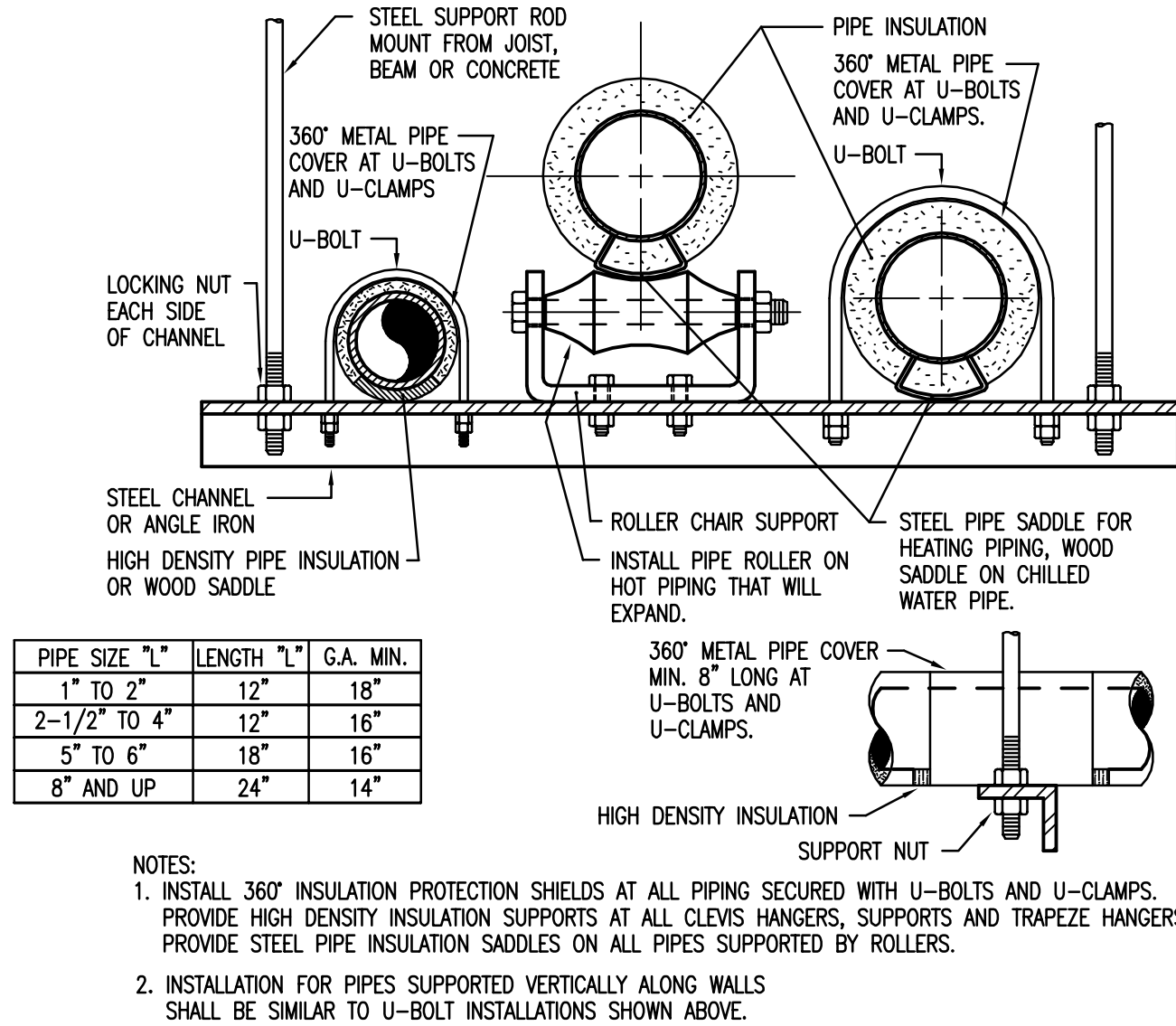


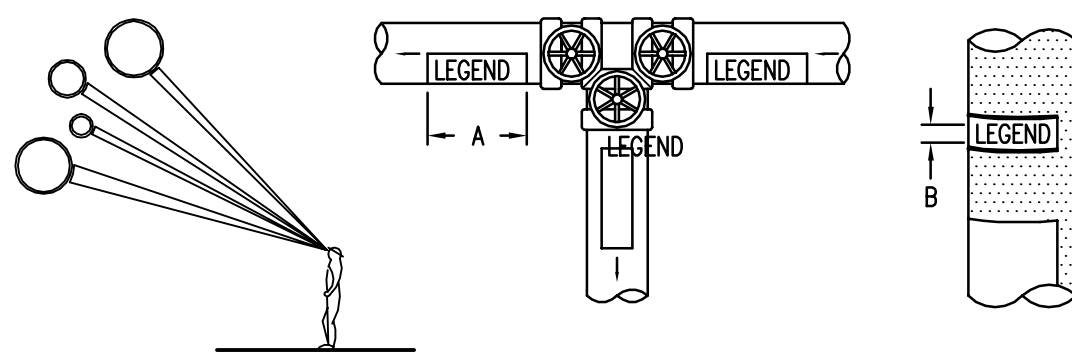
DATE PLOTTED: 3/28/2018 10:55 AM FILE PATH AND NAME: P:\139-A-3 Chesterton MS Office Renovation\139-A-3 M4.01 PLOTTED BY: LARRY ARNOLD



1 VOLUME DAMPERS - SINGLE BLADE TYPE
M4.01 NO SCALE



2 TYPICAL TRAPEZE PIPE HANGER DETAIL
M4.01 NO SCALE

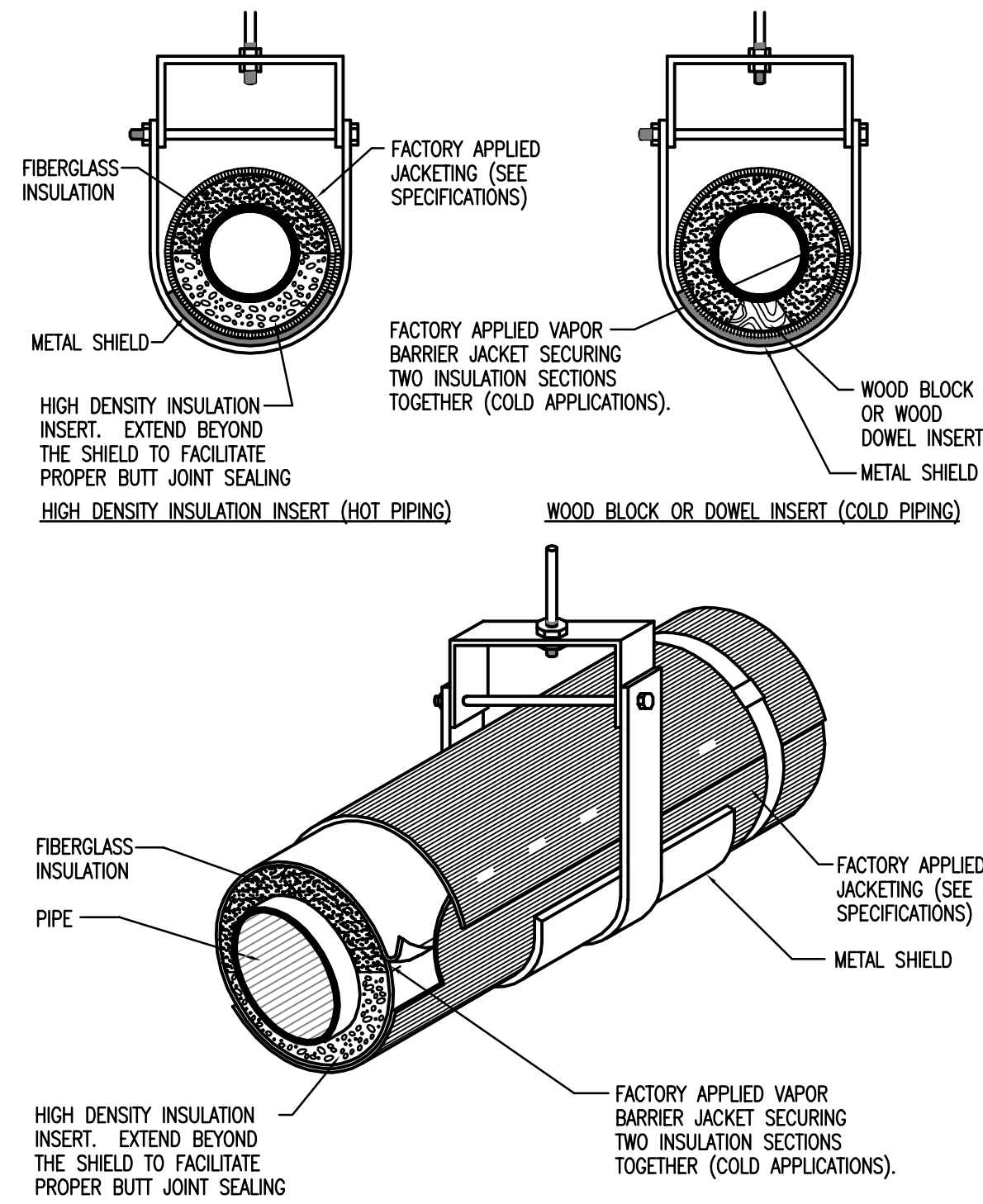


- NOTES:
- ONLY FACTORY MANUFACTURED MARKERS AS FOLLOWS WILL BE ACCEPTABLE:
PIPES 3/4" THRU 5-7/8" DIAMETER: USE "SNAP-AROUND" TYPE.
PIPES 6" DIAMETER AND LARGER: USE "STRAP-AROUND" TYPE.
STENCILS AND STICK-ON TYPE MARKERS WILL NOT BE PERMITTED.
 - IDENTIFICATION MARKERS TO BE PLACED ON ALL EXPOSED COVERED AND UNCOVERED PIPES AT 20'-0" INTERVALS AND AT ALL VALVES AND BRANCHES AND ON BOTH SIDES OF WALLS WHERE PIPES PASS THROUGH SAME. ARROWS OF SAME COLOR AS IDENTIFICATION MARKERS SHALL ALSO BE PLACED ON PIPES POINTING AWAY FROM MARKER INDICATING DIRECTION OF FLOW.

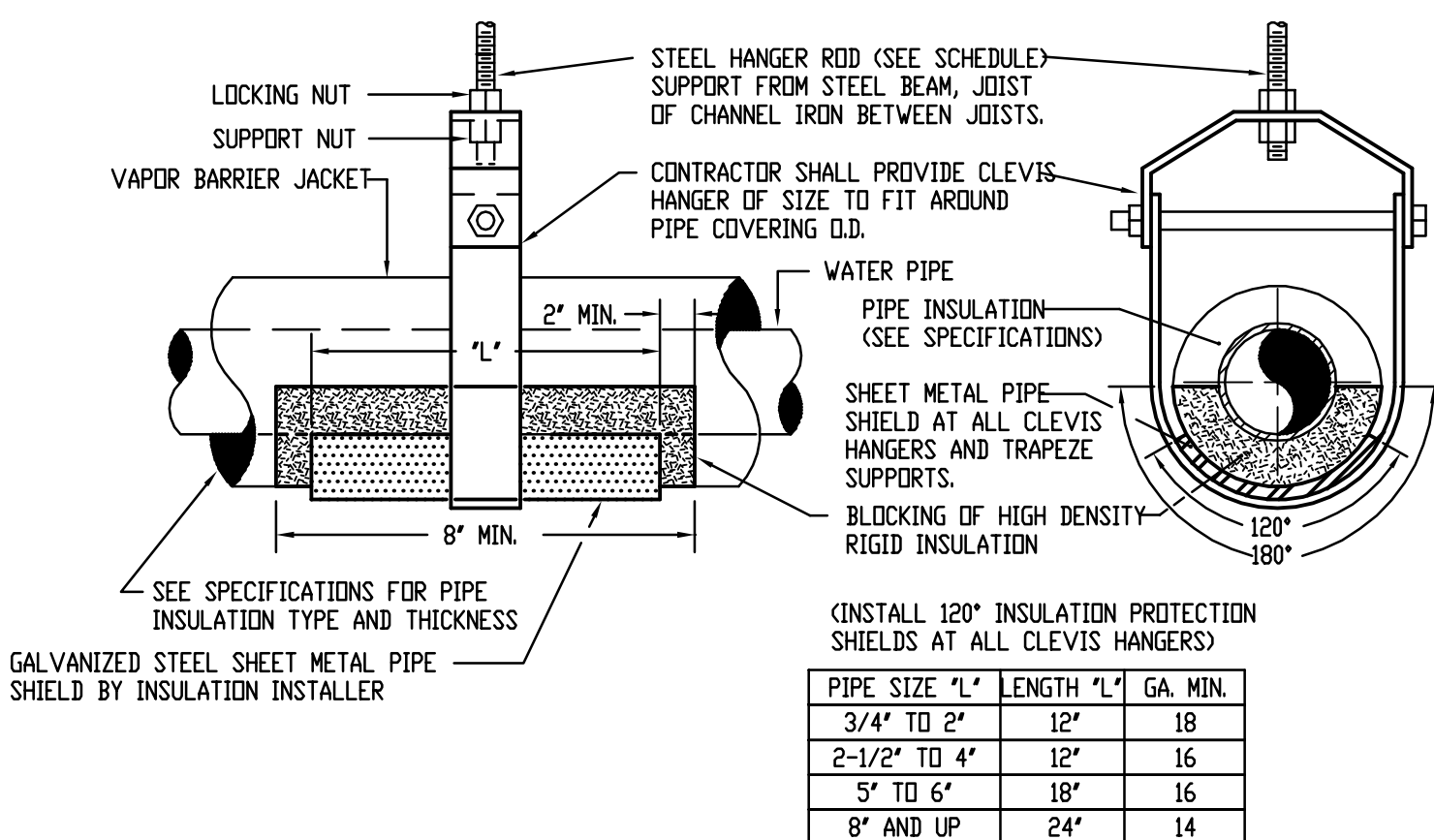
SIZE OF LEGEND LETTERS		
OUTSIDE DIAMETER OF PIPE OR COVERING	LENGTH OF COLOR FIELD A	SIZE OF LETTERS B
3/4" TO 1-1/4"	8"	1/2"
1-1/2" TO 2"	8"	3/4"
2-1/2" TO 6"	12"	1-1/4"

PLAN TAG	SERVICE	IDENTIFICATION MARKER
BWS	BOILER WATER SUPPLY	BLACK LETTERING ON YELLOW BACKGROUND
BWR	BOILER WATER RETURN	BLACK LETTERING ON YELLOW BACKGROUND
HWS	HOT WATER HEATING SUPPLY	BLACK LETTERING ON YELLOW BACKGROUND
HWR	HOT WATER HEATING RETURN	BLACK LETTERING ON YELLOW BACKGROUND
G	NATURAL GAS	WHITE LETTERING ON GREEN BACKGROUND
MU	MAKE-UP WATER (H.W. TANK)	BLACK LETTERING ON YELLOW BACKGROUND
HW	CHILLED/HOT WATER SUPPLY	BLACK LETTERING ON YELLOW BACKGROUND
CHWS	CHILLED/HOT WATER RETURN	BLACK LETTERING ON YELLOW BACKGROUND
CHWS	CHILLED WATER SUPPLY	WHITE LETTERING ON GREEN BACKGROUND
CHWR	CHILLED WATER RETURN	WHITE LETTERING ON GREEN BACKGROUND
C	CONDENSATE	BLACK LETTERING ON YELLOW BACKGROUND

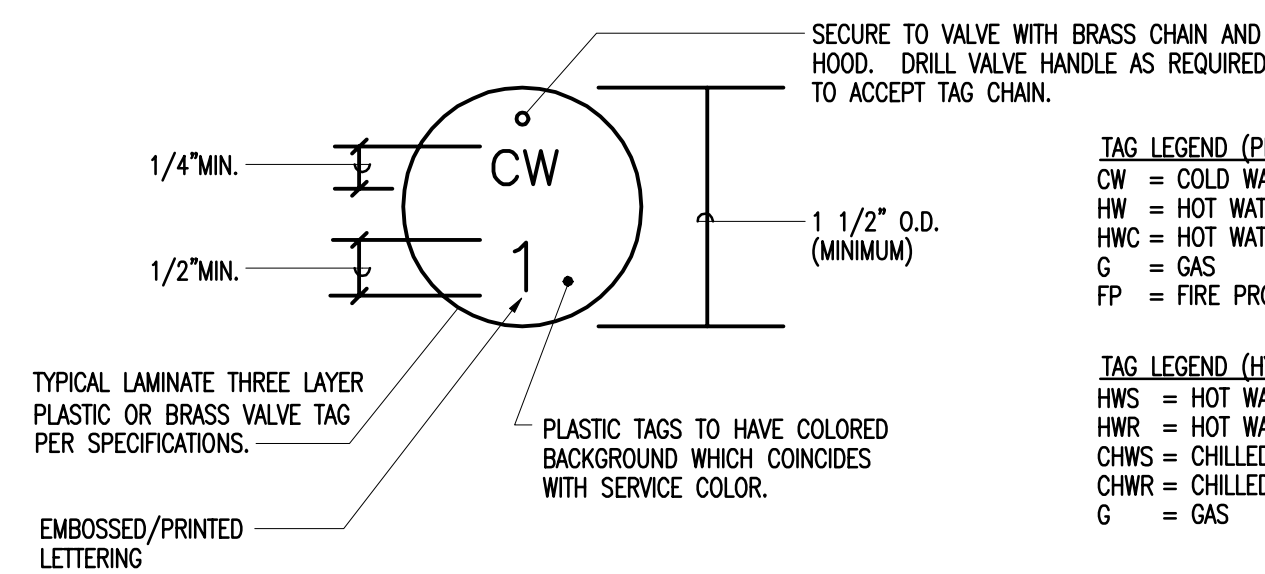
3 TYPICAL PIPE IDENTIFICATION MARKERS
M4.01 NO SCALE



4 CLEVIS HANGER HIGH DENSITY INSERT DETAIL
M4.01 NO SCALE



5 PIPE COVERING PROTECTION SHIELDS & PIPE SADDLES
M4.01 NO SCALE



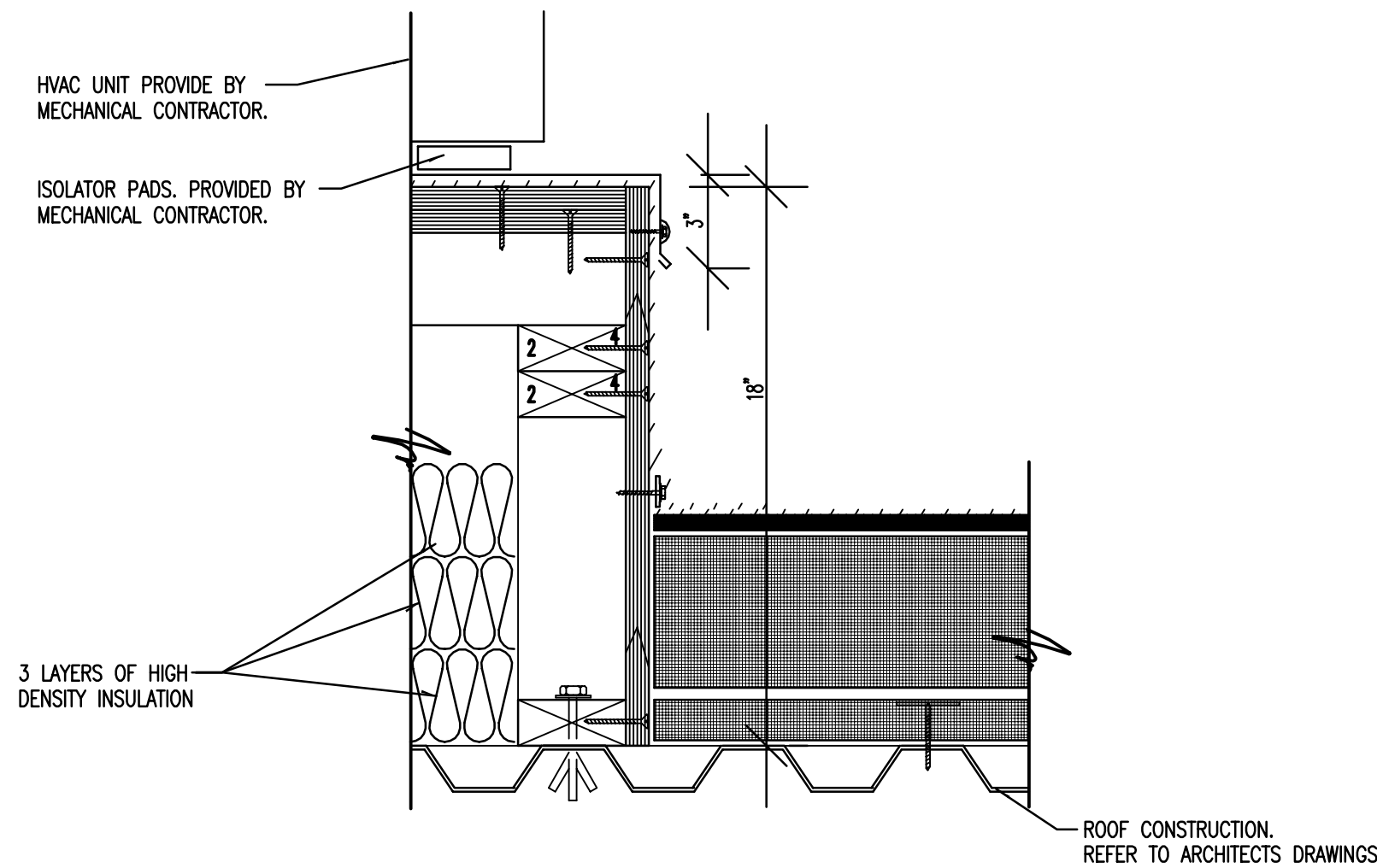
6 VALVE TAG DETAIL & VALVE CHART FORMAT EXAMPLE
M4.01 NO SCALE

NOTE: REFERENCE ALL "VALVE TAGS" TO "VALVE TAG CHARTS", "AS-BUILT DWGS", AND "O & M MANUALS DATA" (INDEX VALVES PER CHART).

EXAMPLE VALVE TAG CHART						
VALVE TAG #	LOCATION (ALSO SEE AS-BUILT DWGS)	FUNCTION (WHAT IT DOES & WHAT/WHERE IT SERVICES)	TYPE	SIZE	MANUFACTURER	MODEL NUMBER
CW-1	RM. XXX - ABOVE CEILING	ON/OFF - FIXTURES IN RM. XXX & XXX...	BV	1"	BELL & GOSSETT	XX-XXX-XX
CW-2	CORR. XXX - ABOVE DOOR @ RM. XXX	BALANCE - 2ND FLOOR, EAST SIDE, NORTH WING...	BF.V	1 1/2"	ALLEN BRADLEY	XX-XXX-XX
CW-3	BOILER RM. XXX - NE CORNER	ON/OFF - MAIN - BLDGS X,Y & Z	GV	8"	BELL & GOSSETT	XX-XXX-XX
CW-4	RM. XXX - BEHIND N. ACCESS PANEL	ON/OFF - EXTERIOR FIELDHOUSE & FIELD HYDRANT - IRRIGATION	BV	3"	M & M	XX-XXX-XX
HW-1	RM. XXX - ABOVE CEILING	ON/OFF - MIXING VALVE - EVENING	BV	1"	GTM & S	XX-XXX-XX

* ALL MAJOR SYSTEMS ON-OFF, CONTROL AND BALANCING VALVES SHOULD HAVE AN ASTERISK **

PROVIDE 8 1/2" x 11" VALVE TAG SHEETS IN A 3 RING BINDER FOR REPRODUCTION AND/OR FUTURE EDITING.



- NOTES:
- ALL WOOD BLOCKING TO BE TREATED WITH JOINTS STAGGERED, MITERED, AND SCREWED TIGHT.
 - CURB TO BE EQUAL TO THYCURB MODEL TC-3 TH INSULATED PLATFORM STYLE BASE. CURB TO HAVE FLAT TOP, MINIMUM 14 GAUGE GALVANIZED STEEL CONSTRUCTION, BOTTOM FLOOR AND REMOVABLE PLYWOOD TOP (2 LAYERS AT 3/4") WITH 20 GAUGE COVER. CONTRACTOR TO FIELD PROVIDE AND INSTALL 3 LAYERS OF HIGH DENSITY SOUND INSULATION IN CURB CAVITY FOR SOUND BREAK. CURB TO BE FACTORY ENGINEERED TO MATCH HVAC UNIT BEING SUPPORTED.

7 HVAC PLATFORM CURB DETAIL
M4.01 NO SCALE

SEE ARCHITECTURAL DETAILS FOR ROOFING REQUIREMENTS.



PE/PP CONSULTANT
(P) 630338796

700 N. MICHIGAN ST., 11TH FLOOR, CHICAGO, IL 60610



STRUCTURAL ENGINEER
(P) 847983300

21 SOUTH EVERGREEN, SUITE 200
AUBURN HILLS, AL 36830

DUNELAND SCHOOL CORPORATION

2018 MAIN OFFICE RENOVATIONS AT:

CHESTERTON MIDDLE SCHOOL (CMS)

651 W. MORGAN AVENUE, CHESTERTON, INDIANA 46304

PROJECT NUMBER: 18-003
PROJECT MANAGER: PK
DRAWN BY: CAS
SHEET FOR BID: 00/00/008

DETAILS
MECHANICAL

M4.01