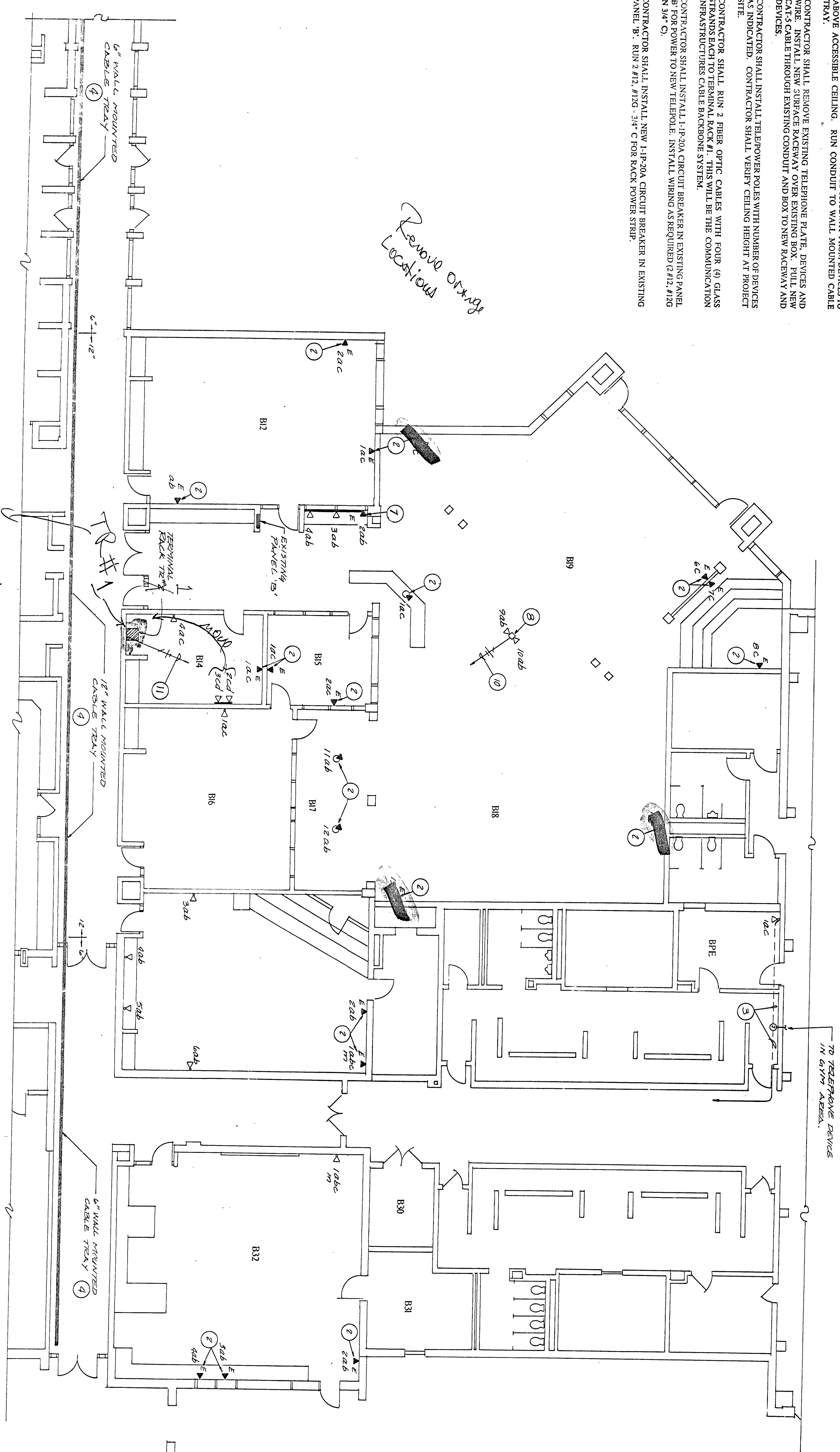
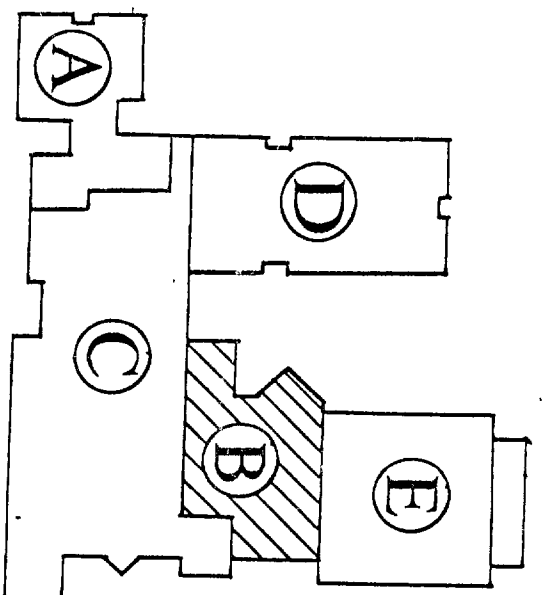


- PLAN NOTES
1. ALL STATION DEVICES ON THIS DRAWING SHALL BE ROUTED TO TERMINAL RACK NO. 2.
 2. CONTRACTOR SHALL REMOVE EXISTING TELEPHONE DEVICES AND WIRE COMPLETE. EXISTING CONDUIT AND BOX SHALL REMAIN. CONTRACTOR SHALL INSTALL NEW CAT-3 WIRING, DEVICES AND COVERS AS INDICATED ON DRAWING.
 3. CONTRACTOR SHALL SURFACE MOUNT CONDUIT AS HIGH TO CEILING AS POSSIBLE. WHEN AVAILABLE RUN CONDUIT ABOVE ACCESSIBLE CEILING TO THE NEW CABLE TRAY.
 4. SEE WALL MOUNTED CABLE TRAY DETAIL ON DRAWING E2-D OF THIS SET.
 5. THE FOLLOWING IS A DESCRIPTION OF WIRING DEVICE TO BE INSTALLED AT EACH STATION:
a. DATA
b. DATA
c. TELEPHONE
d. SERVER
 6. CONTRACTOR SHALL RUN SURFACE MOUNTED RACEWAY FROM DEVICES TO ABOVE ACCESSIBLE CEILING. RUN CONDUIT TO WALL MOUNTED CABLE TRAY.
 7. CONTRACTOR SHALL REMOVE EXISTING TELEPHONE PLATE, DEVICES AND WIRE. INSTALL NEW SURFACE RACEWAY OVER EXISTING CONDUIT AND CAT-3 CABLE THROUGH EXISTING CONDUIT AND BOX TO NEW RACEWAY AND DEVICES.
 8. CONTRACTOR SHALL INSTALL TELEPHONE DEVICES WITH NUMBER OF DEVICES AS INDICATED. CONTRACTOR SHALL VERIFY CHASSIS HEIGHT AT PROJECT SITE.
 9. CONTRACTOR SHALL RUN 2 PBR OPTIC CABLES WITH FOUR (4) GLASS STRANDS EACH TO TERMINAL RACK. THIS SHALL BE THE COMMUNICATION INFRASTRUCTURES CABLE BACKBONE SYSTEM.
 10. CONTRACTOR SHALL INSTALL 1-P-20A CIRCUIT BREAKER IN EXISTING PANEL. 5-P-20A CIRCUIT BREAKER TO NEW TELEPHONE. INSTALL WIRING AS REQUIRED (2 #12, #10G IN 3/4" C).
 11. CONTRACTOR SHALL INSTALL NEW 1-P-20A CIRCUIT BREAKER IN EXISTING PANEL "B". RUN 2 #12, #10G - 3/4" C FOR RACK POWER STRIP.



ELECTRICAL SYSTEM PLAN - UNIT B



KEY PLAN

PROFESSIONAL ENGINEER
No. 13815
Indiana
PROJECT ENGINEER
CANDY L. MOORE
CERTIFIED BY
CANDY L. MOORE
PROJECT ENGINEER
REVISIONS
DATE DESCRIPTION
MARK

MOORI ENGINEER
A PROFESSIONAL CORPORATION
9245 N. Meridian Street, Suite 105
Indianapolis, Indiana 46260-1812
(317) 848-5045 FAX: (317) 848-2765

COMMUNICATIONS INFRASTRUCTURE FOR DUNELAND SCHOOL CORPORATION
DUNELAND SCHOOL CORPORATION
CHESTERION, INDIANA

TITLE
BAILEY ELEMENTARY SCHOOL
DATE 12/5/94
SCALE 1/8" = 1'-0"
SHEET NO. 9405
E2-BYE
DRAWN BY RDC