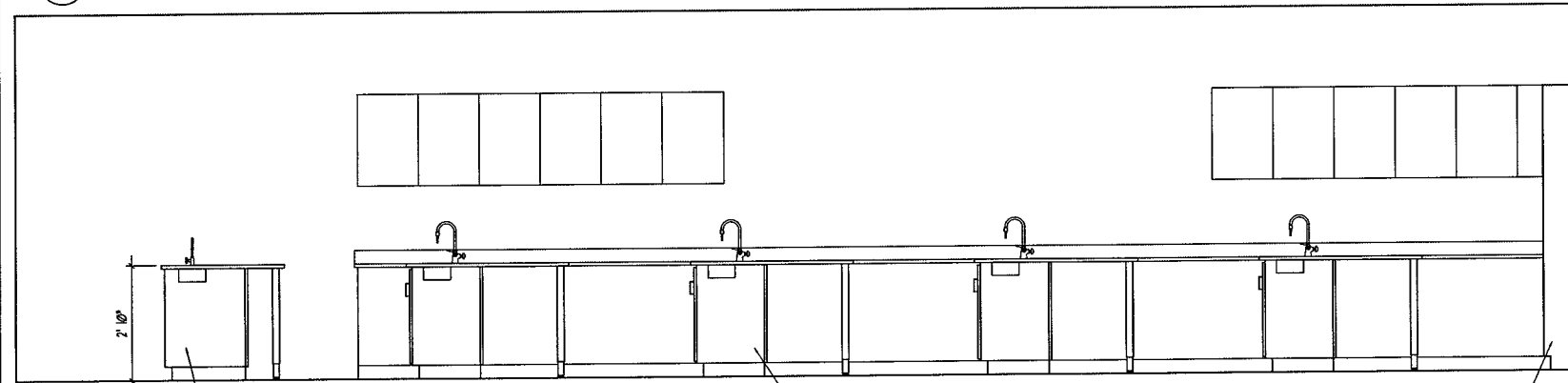
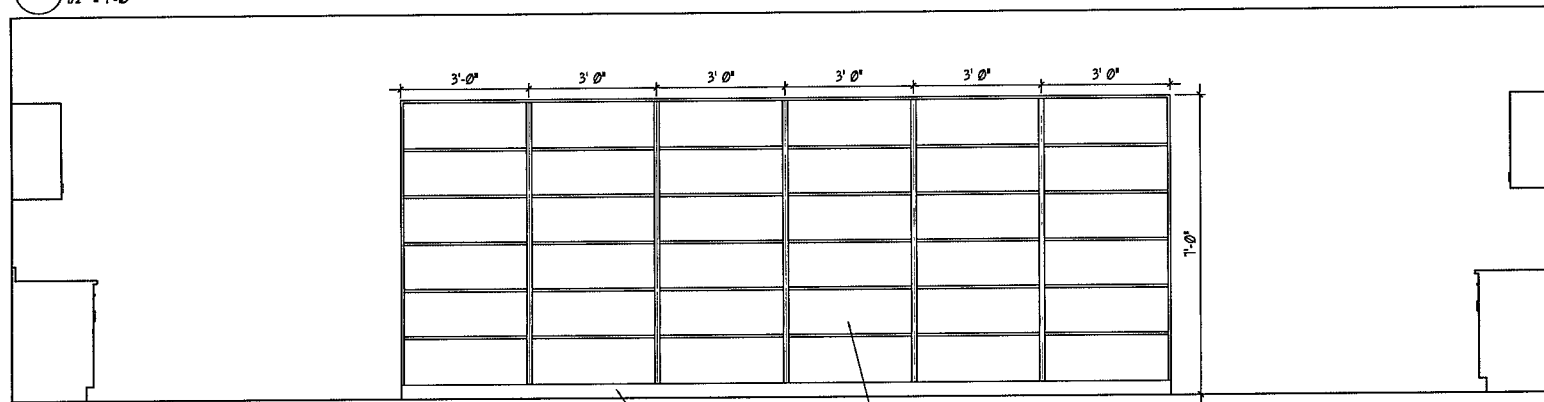


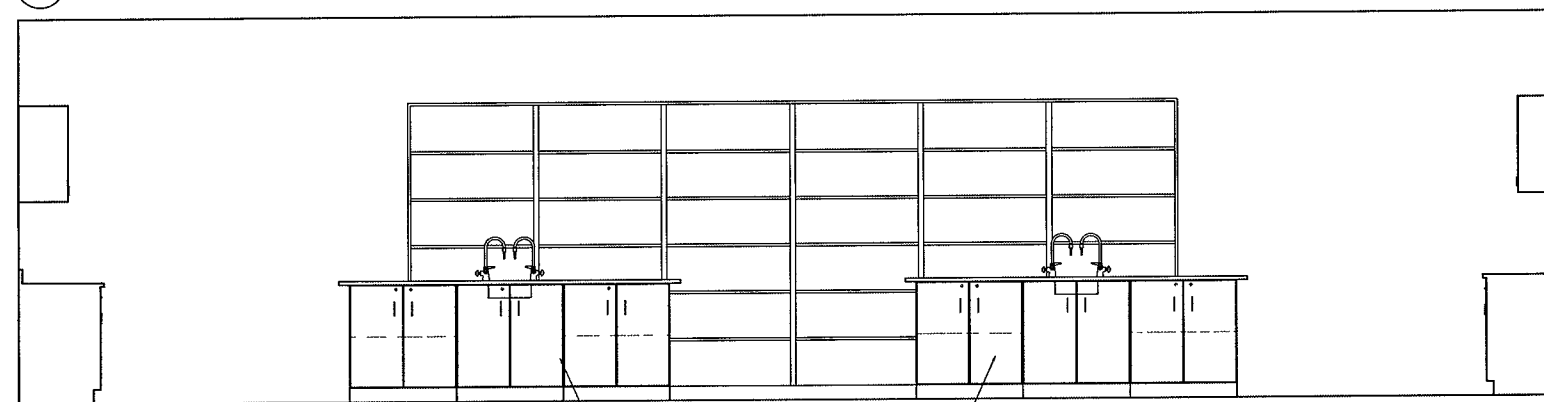
1 CASEWORK ELEVATION
1/2" = 1'-0"



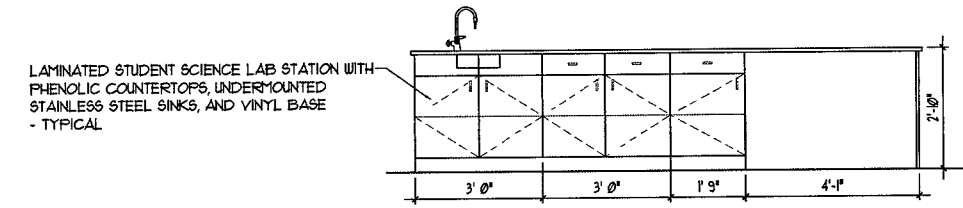
3 CASEWORK ELEVATION
1/2" = 1'-0"



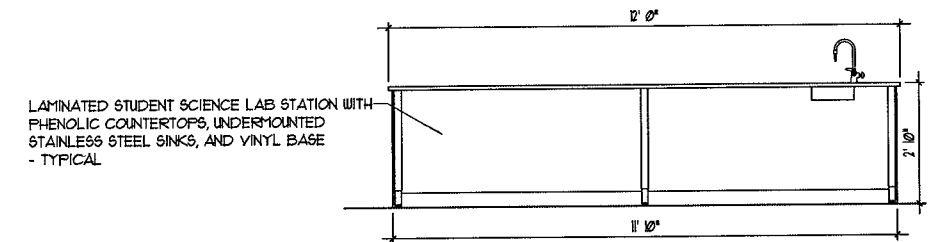
5 CASEWORK ELEVATION
1/2" = 1'-0"



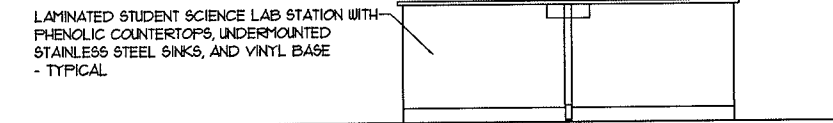
7 CASEWORK ELEVATION
1/2" = 1'-0"



2 DEMONSTRATION DESK ELEVATION
1/2" = 1'-0"



4 DEMONSTRATION DESK ELEVATION
1/2" = 1'-0"



6 STUDENT SCIENCE LAB STATION ELEVATION
1/2" = 1'-0"



MEF BOMER
Miles Engineering Group
(P) 733.514.000
(F) 733.514.001
www.mileseng.com

DUNELAND SCHOOL CORPORATION
2017 SCIENCE LAB RENOVATIONS AT:
CHESTERTON MIDDLE SCHOOL
651 W. MORGAN AVENUE, CHESTERTON, INDIANA 46304



PROJECT NUMBER: 11-009	REVISIONS:
PROJECT MANAGER: TS	1
DRAWN BY: MKR	2
DATE FOR PERMIT: 6/20/2017	3
CASEWORK ELEVATIONS	



Express 12/31/2017

A3.10