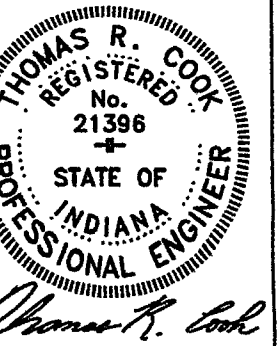
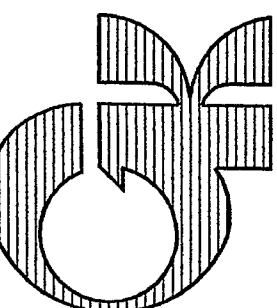


REVISIONS	BY

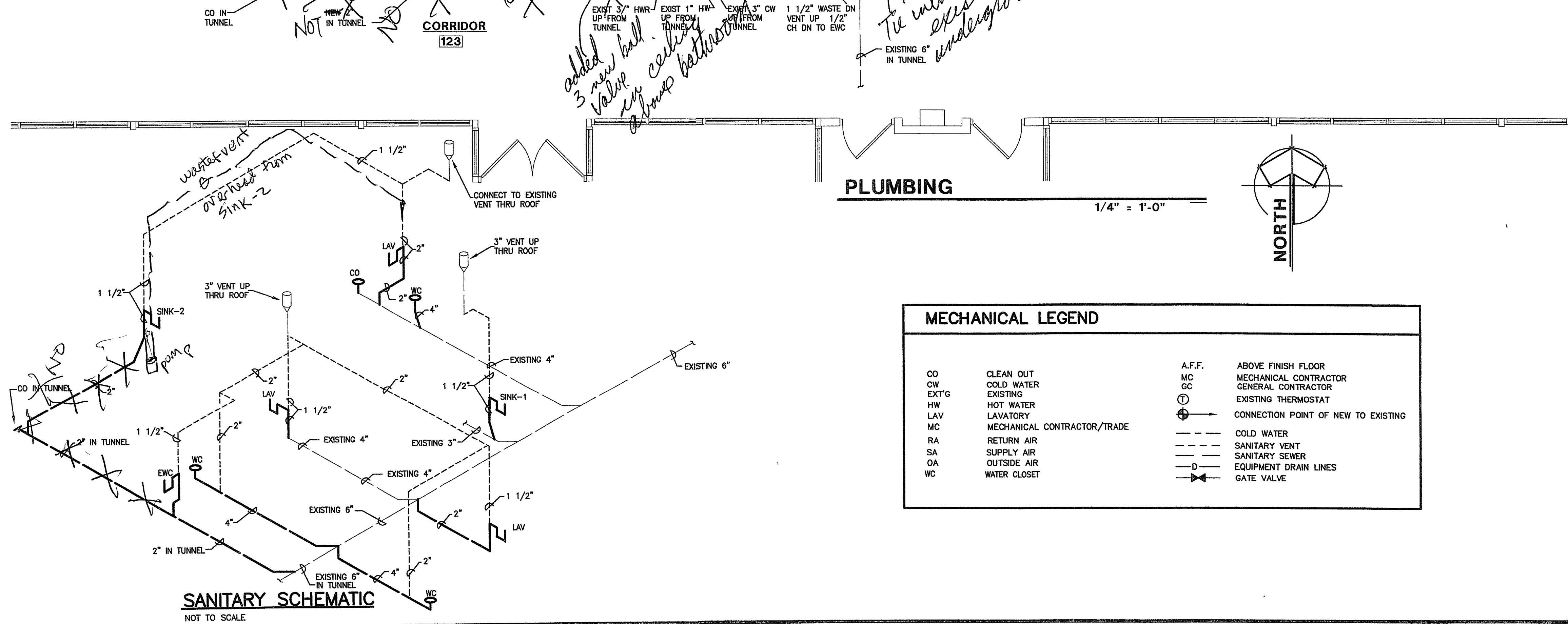
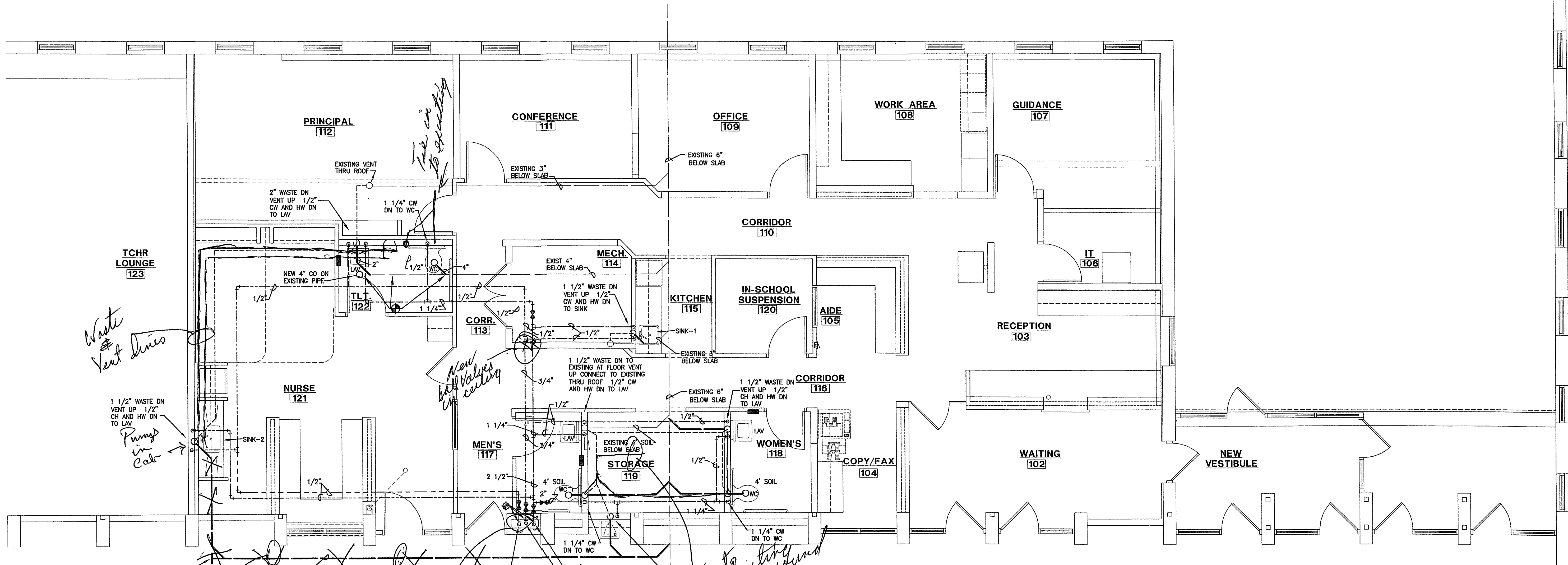


WESTCHESTER INTERMEDIATE SCHOOL - OFFICE REMODEL
CHESTERSTON, INDIANA
gerometta & kinel architects, inc.

PLUMBING PLAN
1050 S. FIFTH STREET
gerometta & kinel architects, inc.



DATE 4/26/11
SCALE AS NOTED
DRAWN THH, MCT
JOB 1117
SHEET **M2.1**
OF 15 SHEETS



PLUMBING FIXTURE SCHEDULE	
NOTE: REFER TO ARCHITECTURAL PLANS FOR PLUMBING FIXTURE MOUNTING HEIGHTS.	
MARK	DESCRIPTION
WC	WATER CLOSET (FLOOR MOUNTED) - ADA COMPLIANT VITREOUS CHINA, FLOOR MOUNTED, 1.6 GPF, SIPHON JET, ELONGATED BOWL WITH 1-1/2" TOP SPUD AND 2-1/4" PASSAGEWAY; AMERICAN STANDARD "MADERA" NO. 3043.102 OR KOHLER "HIGHCLIFF" NO. K-4368. CLOSET SEAT: WHITE, SOLID PLASTIC OPEN FRONT, EXTENDED BACK SEAT, LESS COVER WITH CHECK HINGE FLUSH VALVE; BATTERY POWERED/SENSOR OPERATED, 1.6 GPF, 1-1/4" TOP SPUD WITH FLUSH OVER-RIDE BUTTON, 10" HIGH STEM, ZURN MODEL #ZER6000AV-CPM-WS1.
LAV	LAVATORY VITREOUS CHINA LAVATORY, WALL HANGING, ADA COMPLIANT, 20" X 18" NOMINAL, FAUCET HOLES ON 4" CENTERS, FRONT OVERFLOW, SELF DRAINING DECK WITH BACK AND SIDE SPLASH SHIELDS, AMERICAN STANDARD "LUCERNE" NO. 0355.012 OR KOHLER "KINGSTON" NO. K-2005, CARRIER: CONCEALED ARMS WITH LEVELING AND SECURING SCREWS, STEEL PIPE UPRIGHTS AND WEB OR BLOCK FEET AS REQUIRED FOR CONSTRUCTION. FIXTURE SHALL BE COMPLETE WITH 3/8" LOOSE KEY-OPERATED STOPS, 1-1/4" CHROME PLATED BRASS ADJUSTABLE P-TRAP AND WALL ESCUTCHEONS. FITTING: WASHERLESS, SINGLE-HANDLE FAUCET, ADA COMPLIANT, 4" CENTER, VANDAL PROOF AERATOR, GRID DRAIN AND TAILPIECE, AMERICAN STANDARD RELIANT NO. 7385.003 ONLY. PROVIDE INSULATION KIT FOR EXPOSED SUPPLY AND WASTE PIPING. TRUEBRO HANDI LAV-GUARD, PLUMBEREX PRO-EXTREME OR APPROVED EQUAL.
SINK-1	SINK SINGLE BOWL, LEDGE BACK SINK, 18 GAUGE TYPE 302 STAINLESS STEEL, SELF-RIMMING, ELKAY #LR-2219 OR JUST EQUAL. SINK SHALL CONTAIN THREE (3) FAUCET HOLES. FITTINGS: DELUXE TWO LEVER DECK MOUNT MIXING FAUCET W/ AERATOR, DELTA #3176-LHP-H25 OR APPROVED EQUAL. PROVIDE SINK WITH STAINLESS STEEL CRUMB CUP STRAINER, P-TRAP AND LOOSE KEY OPERATED STOPS. MECHANICAL CONTRACTOR SHALL PROVIDE CUT OUT TEMPLATE TO GENERAL CONTRACTOR IN AMPLE TIME TO MAINTAIN CONSTRUCTION SCHEDULE. GENERAL CONTRACTOR SHALL CUT OPENINGS IN CABINET TOPS FOR SINKS, MECHANICAL CONTRACTOR SHALL COORDINATE AS REQUIRED.
SINK-2	SINK EXISTING RELOCATED SINK REUSE EXISTING FAUCET AND TAIL PIECE. PROVIDE NEW STOPS AND TRAP.
EW	ELECTRIC WATER COOLER ADA ACCESSIBLE, WALL MOUNTED, STAINLESS STEEL TOP AND CABINET. AIR-COOLED WITH CAPACITY TO COOL A MINIMUM OF 8.0 GPH TO 50 DEG. WITH 80 DEG. INLET AND 90 DEG. AMBIENT. TRIM: FLEXIBLE, ANGLE, STREAM BUBBLER, TOUCH PADS, LOCATE TWO ON FRONT ON FRONT AND ONE ON EACH SIDE OF CABINET, FLOW REGULATOR, BUILT-IN STRAINER, 1-1/4" BRASS TRAP, 3/8" ANGLE STOP, 115 VOLT, 1 PHASE, 60 HERTZ POWER SUPPLY, OASIS NO. P6ACSL, HALSEY-TAYLOR, ACORN AQUA, OR HAWS EQUAL. REFER TO ARCHITECTURAL PLANS FOR EXACT ADA MOUNTING HEIGHT. * MC TO FIELD VERIFY EXACT AVAILABLE WALL SPACE BEFORE ORDERING EW. COORDINATE AS REQUIRED.

MECHANICAL LEGEND

CO	CLEAN OUT	A.F.F.	ABOVE FINISH FLOOR
CW	COLD WATER	MC	MECHANICAL CONTRACTOR
EXT	EXISTING	GC	GENERAL CONTRACTOR
HW	HOT WATER	⊕	EXISTING THERMOSTAT
LAV	LAVATORY	⊕	CONNECTION POINT OF NEW TO EXISTING
MC	MECHANICAL CONTRACTOR/TRADE	---	COLD WATER
RA	RETURN AIR	---	SANITARY VENT
SA	SUPPLY AIR	---	SANITARY SEWER
OA	OUTSIDE AIR	---	EQUIPMENT DRAIN LINES
WC	WATER CLOSET	⊕	GATE VALVE