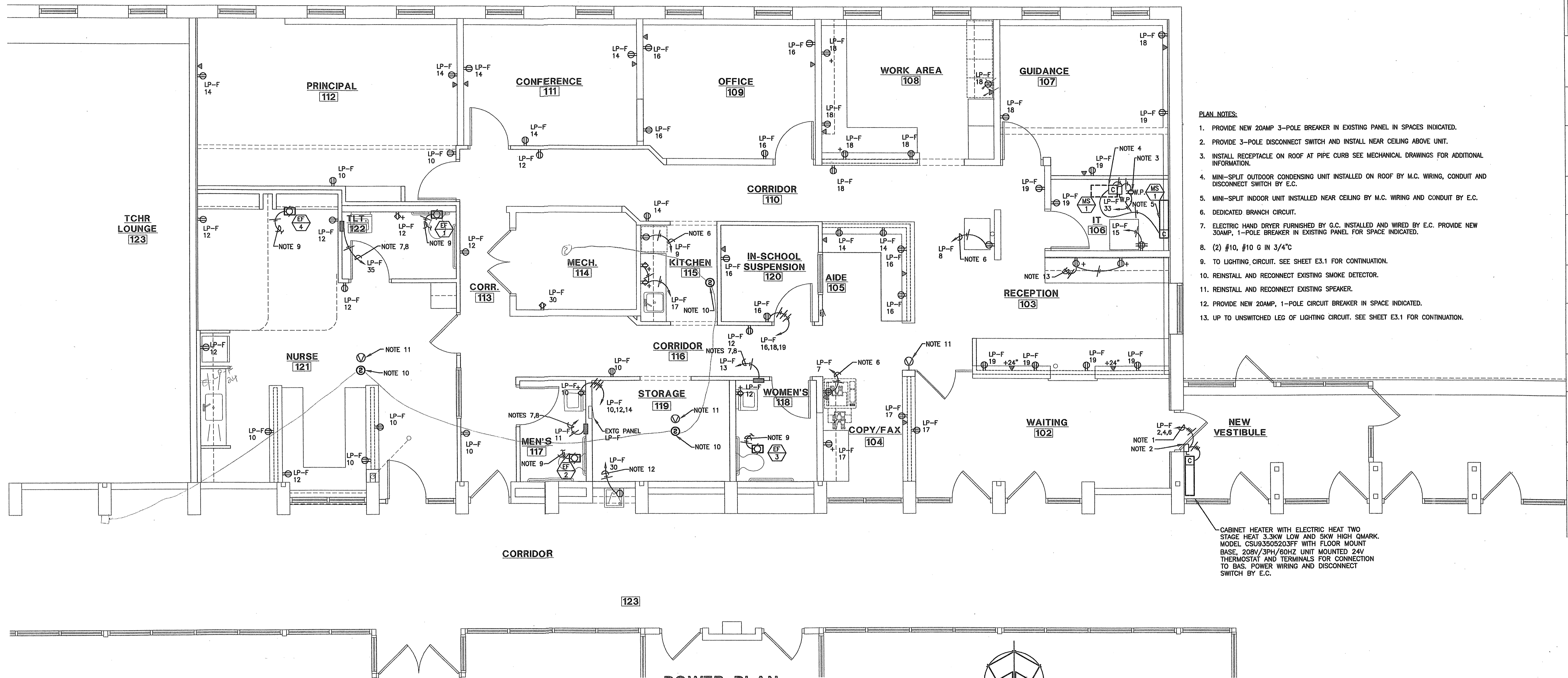
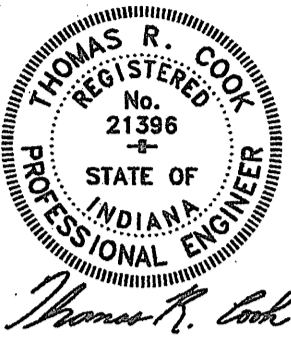


REVISIONS	BY

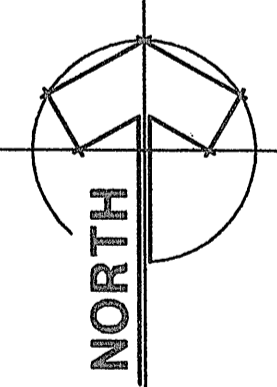


- PLAN NOTES:
1. PROVIDE NEW 20AMP 3-POLE BREAKER IN EXISTING PANEL IN SPACES INDICATED.
 2. PROVIDE 3-POLE DISCONNECT SWITCH AND INSTALL NEAR CEILING ABOVE UNIT.
 3. INSTALL RECEPTACLE ON ROOF AT PIPE CURB SEE MECHANICAL DRAWINGS FOR ADDITIONAL INFORMATION.
 4. MINI-SPLIT OUTDOOR CONDENSING UNIT INSTALLED ON ROOF BY M.C. WIRING, CONDUIT AND DISCONNECT SWITCH BY E.C.
 5. MINI-SPLIT INDOOR UNIT INSTALLED NEAR CEILING BY M.C. WIRING AND CONDUIT BY E.C.
 6. DEDICATED BRANCH CIRCUIT.
 7. ELECTRIC HAND DRYER FURNISHED BY G.C. INSTALLED AND WIRED BY E.C. PROVIDE NEW 30AMP, 1-POLE BREAKER IN EXISTING PANEL FOR SPACE INDICATED.
 8. (2) #10, #10 G IN 3/4" C
 9. TO LIGHTING CIRCUIT. SEE SHEET E3.1 FOR CONTINUATION.
 10. REINSTALL AND RECONNECT EXISTING SMOKE DETECTOR.
 11. REINSTALL AND RECONNECT EXISTING SPEAKER.
 12. PROVIDE NEW 20AMP, 1-POLE CIRCUIT BREAKER IN SPACE INDICATED.
 13. UP TO UNSWITCHED LEG OF LIGHTING CIRCUIT. SEE SHEET E3.1 FOR CONTINUATION.

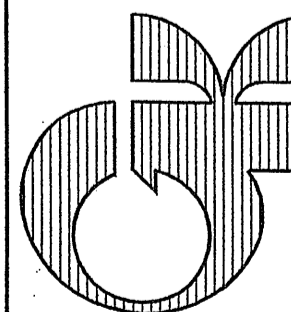
CABINET HEATER WITH ELECTRIC HEAT TWO STAGE HEAT 3.3KW LOW AND 5KW HIGH QMARK. MODEL CSU93505203FF WITH FLOOR MOUNT BASE. 208V/3PH/60HZ UNIT MOUNTED 24V THERMOSTAT AND TERMINALS FOR CONNECTION TO BAS. POWER WIRING AND DISCONNECT SWITCH BY E.C.

POWER PLAN

1/4" = 1'-0"



POWER PLAN
WESTCHESTER INTERMEDIATE SCHOOL - OFFICE REMODEL
1050 S. FIFTH STREET
gerometta & kinel architects, inc.
CHESTERTON, INDIANA
chesterton, indiana



DATE	4/26/11
SCALE	AS NOTED
DRAWN	THH, MCT
JOB	1117
SHEET	E2.1
OF	15 SHEETS