

HVAC FLOOR PLAN - MECHANICAL ROOM

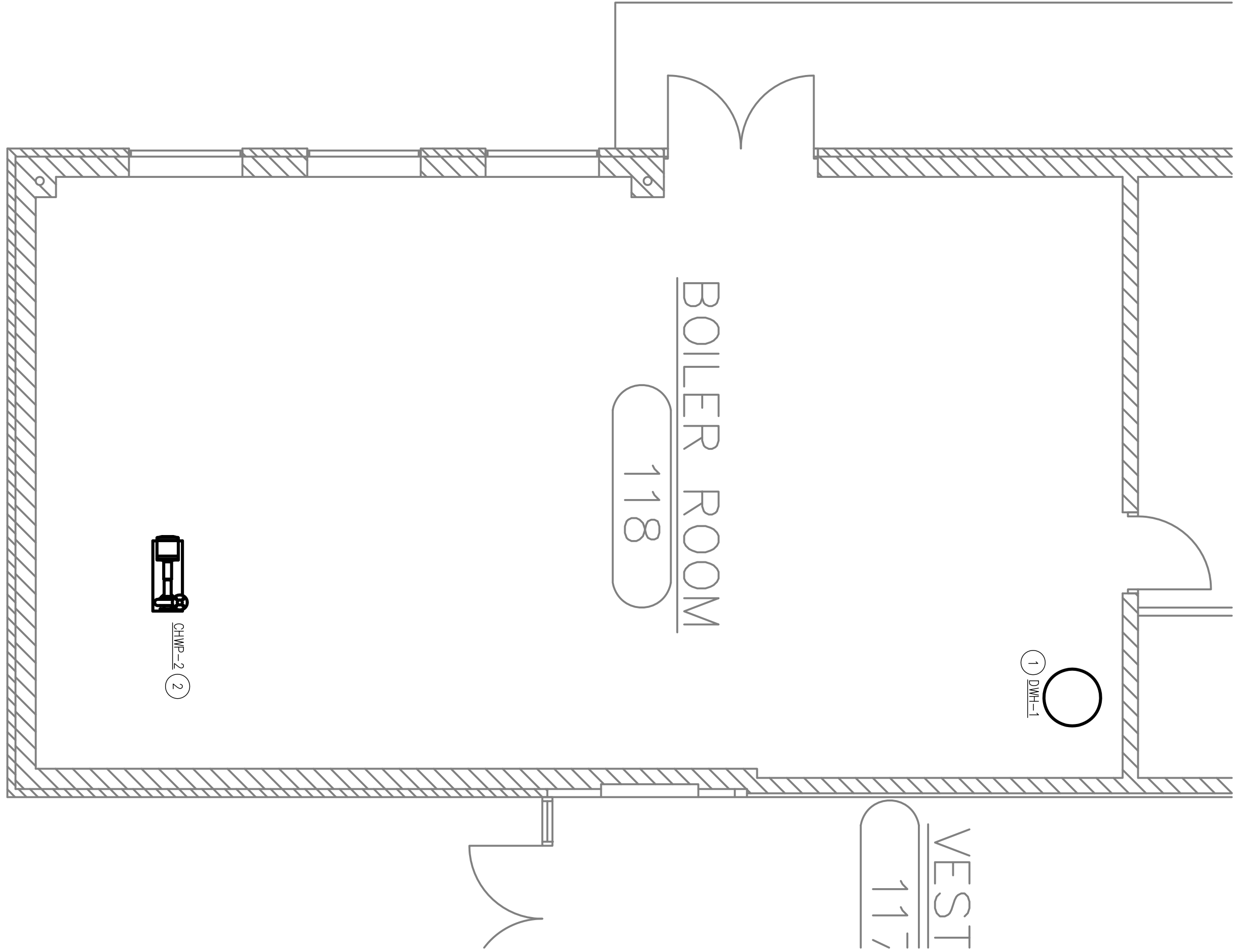
1/4" = 1'-0"

PLAN NOTES:

1. REMOVE AIR HANDLING UNIT COMPLETE. DISCONNECT SUPPLY AND RETURN DUCT TO EXISTING DUCT. PROVIDE NEW DUCT FOR EXTENSION AND CONNECTION TO NEW AIR HANDLING UNIT.
2. DISCONNECT WING BOX AND FILTER FRAME FROM UNIT. PROVIDE GASKET FOR INSTALLATION ON NEW COOLING COIL. RECONNECT FILTER WING BOX TO NEW COOLING COIL AFTER NEW COIL INSTALLATION.
3. EXTEND AND RECONNECT VENTILATION DUCT WORK TO FACILITATE INSTALLATION OF NEW COOLING COIL.
4. RECONNECT SUPPLY AIR DUCT TO NEW AIR HANDLING UNIT. PROVIDE SHEETMETAL TRANSITION AS REQUIRED.
5. RECONNECT RETURN AIR DUCT TO NEW AIR HANDLING UNIT. PROVIDE SHEETMETAL TRANSITION AS REQUIRED.
6. PROVIDE SHEETMETAL DUCT TRANSITION AS REQUIRED FOR WY TERMINAL UNIT INSTALLATION.
7. ROUTE NEW 1" HEATING WATER SUPPLY AND RETURN TO EXISTING PIPING MAINS IN THIS ROOM.
8. ROUTE NEW 2-1/2" CHILLED WATER SUPPLY AND RETURN TO EXISTING MAINS IN THIS ROOM.
9. PROVIDE 1-1/4" CONDENSATE DRAIN WITH P-TRAP TO THE NEAREST FLOOR DRAIN.
10. ROUTE NEW 1-1/2" CHILLED WATER SUPPLY AND RETURN TO EXISTING MAINS IN THIS ROOM.

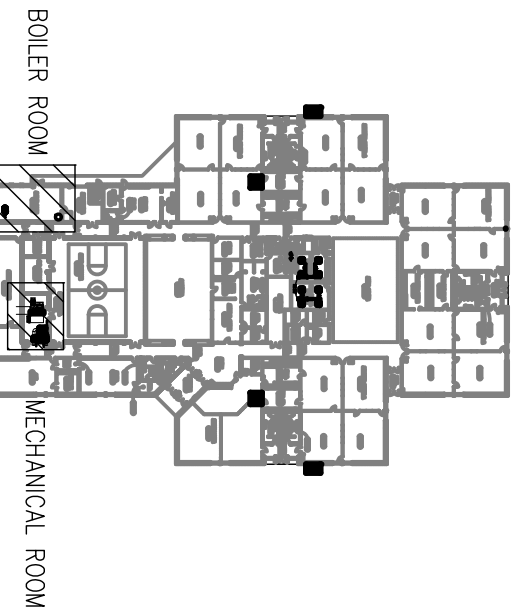
PLAN NOTES:

1. REMOVE ROUGH-IN WATER. INSTALL NEW ROUGH-IN WATER HEATER IN SAME LOCATION. RECONNECT HOT AND COLD WATER CONNECTIONS, GAS PIPING, AND FUE. RECONNECT COMBUSTION AIR CONTROL TO NEW WATER HEATER CONDUITS.
2. INSTALL NEW CHILLED WATER PUMP ADJACENT TO EXISTING PUMP. CONNECT SUCTION AND DISCHARGE PIPING TO EXISTING MAINS AT EXISTING PUMP MAINS.



HVAC FLOOR PLAN - BOILER ROOM

1/4" = 1'-0"



KEY PLAN



MECHANICAL RENOVATIONS
FOR
JACKSON ELEMENTARY SCHOOL
CHESTERTON, IN

Seal

Revision

Project No.	-
Date	10-16-09
Scale	NO SCALE
Drawn By	RSM
Checked By	CC

Sheet Title
MECHANICAL
FLOOR PLAN
MECH. ROOMS
Sheet No.

M2.9