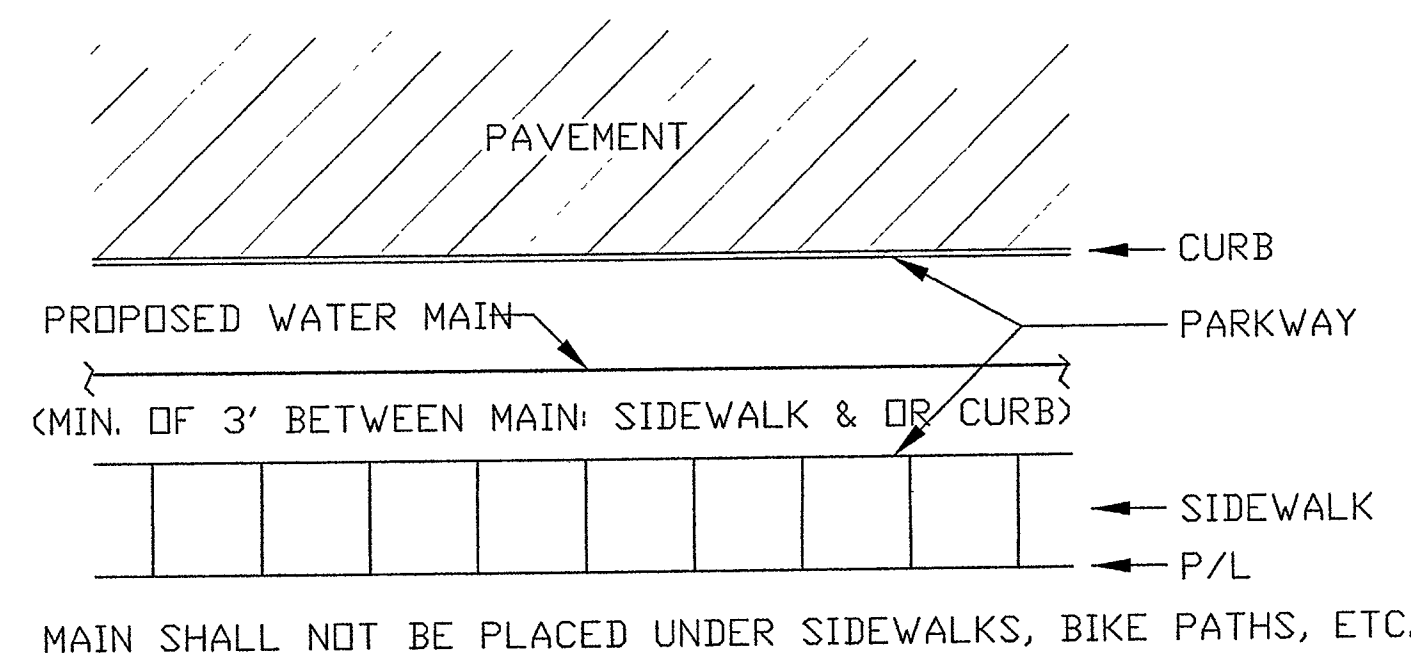
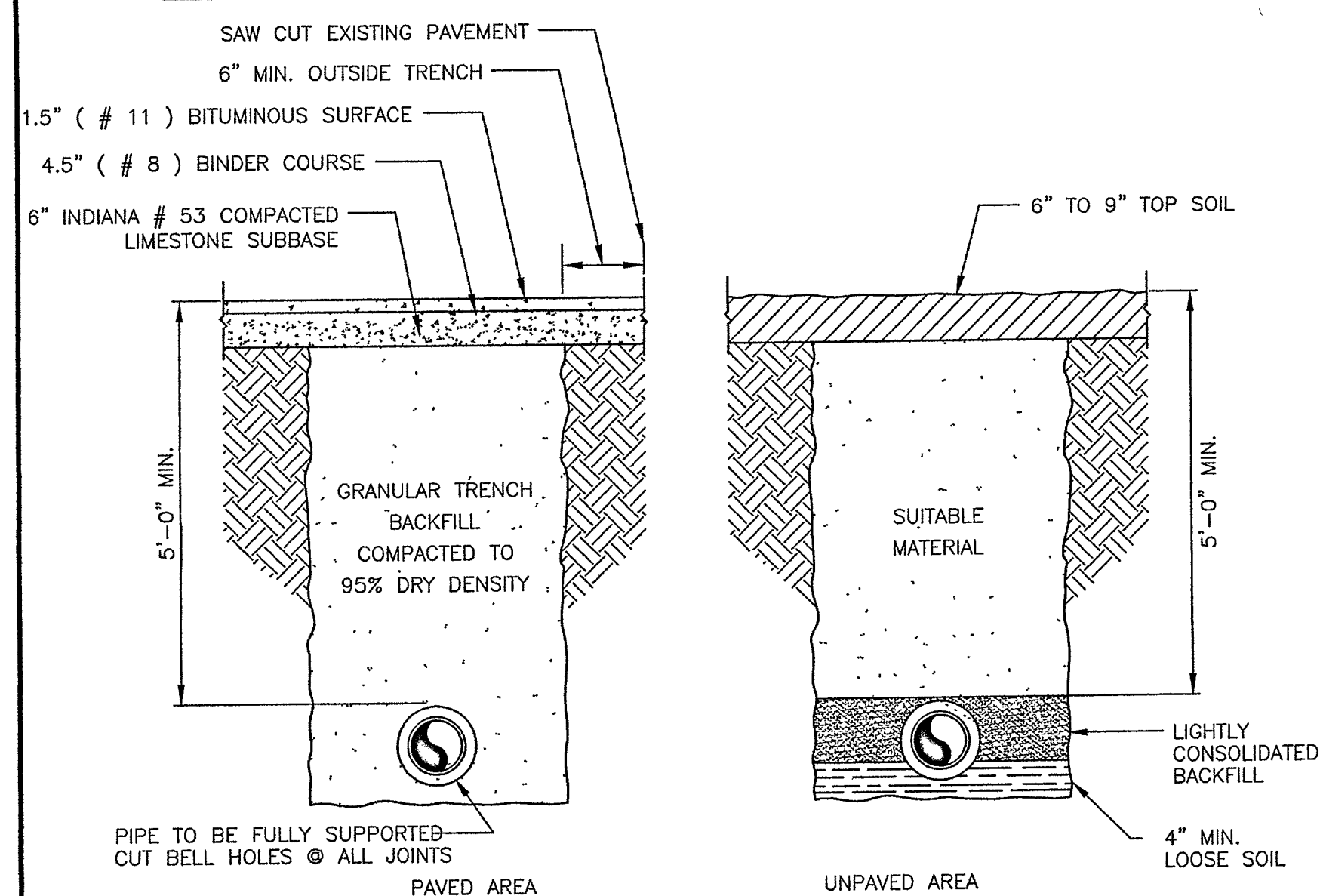


1 MAIN CONNECTION DETAIL
TAPPING



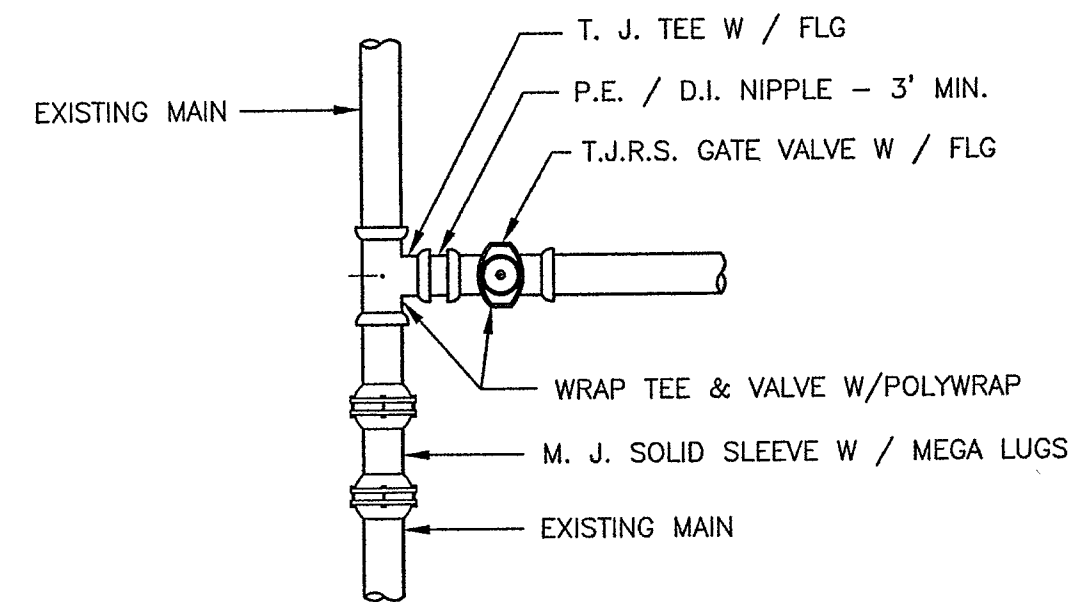
5 TYPICAL PLAN: MAIN PLACEMENT
INSTALLATION PARALLEL TO MAIN

PAVING INSTRUCTIONS

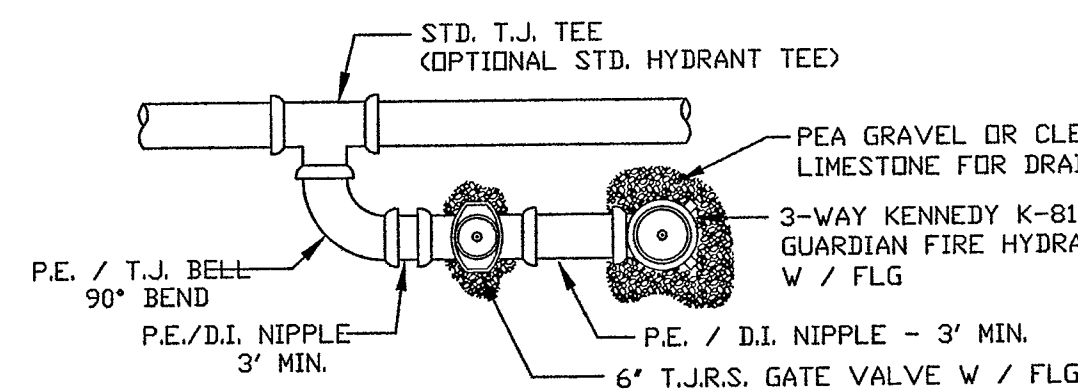


NOTE: SLAG BACKFILL IS NOT ACCEPTABLE

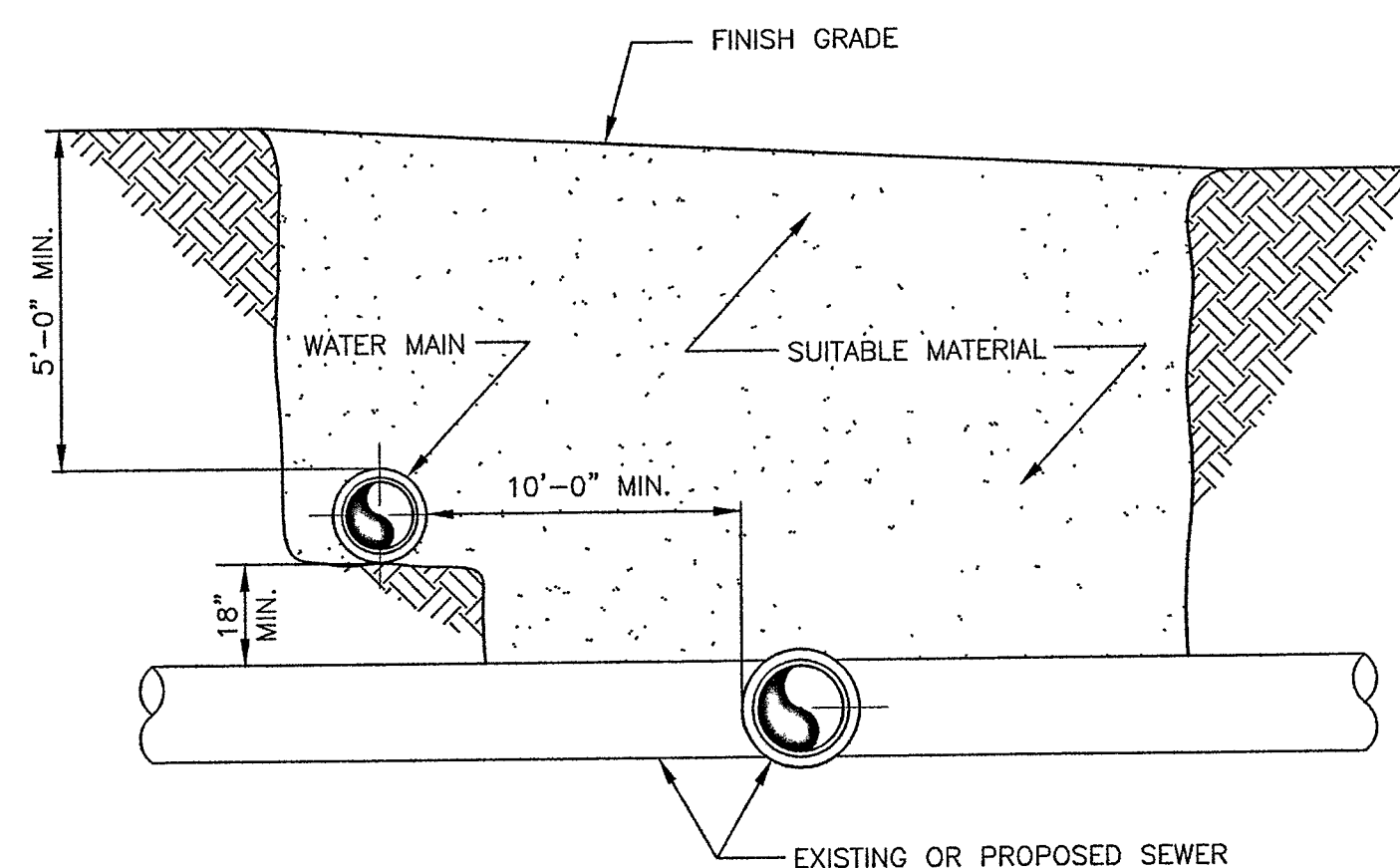
9 TRENCH BACKFILL DETAIL FOR WATER MAIN



2 MAIN CONNECTION DETAIL
CUT-IN

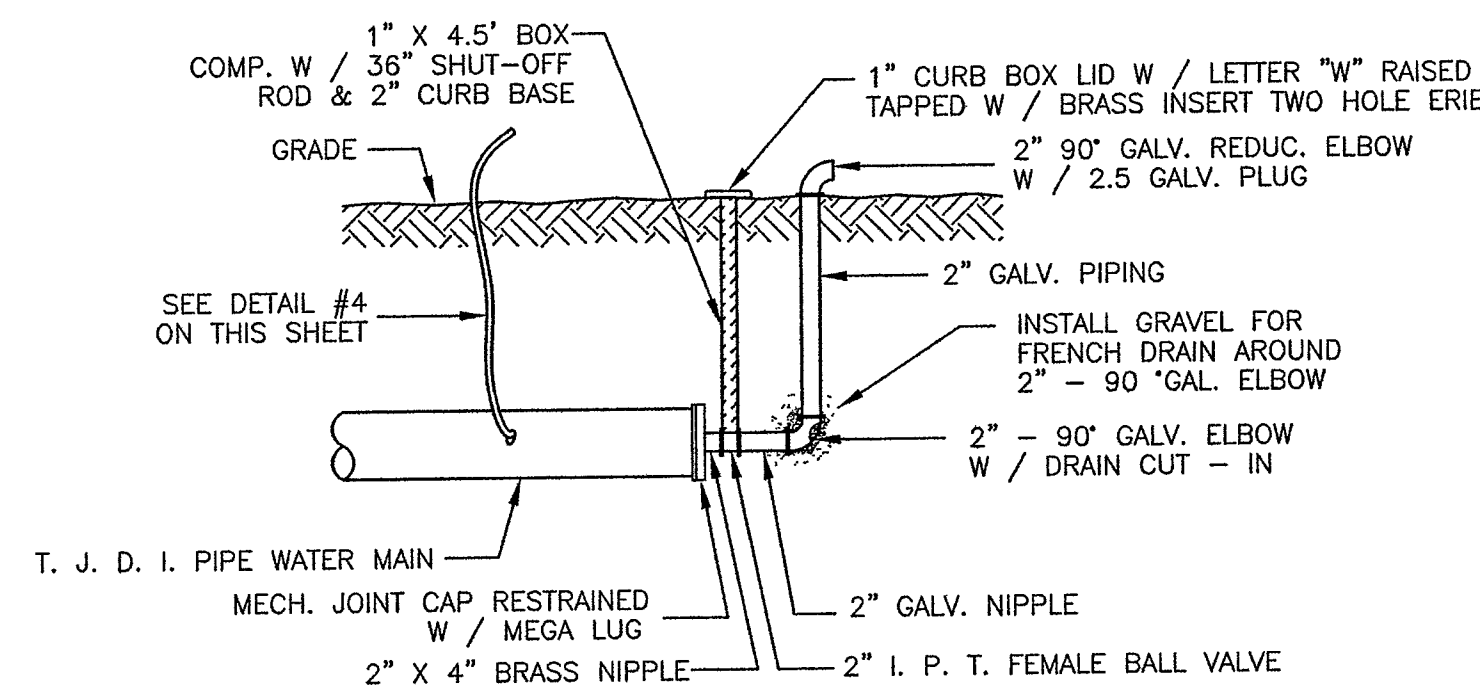


6 HYDRANT CONNECTION DETAIL
INSTALLATION PARALLEL TO MAIN

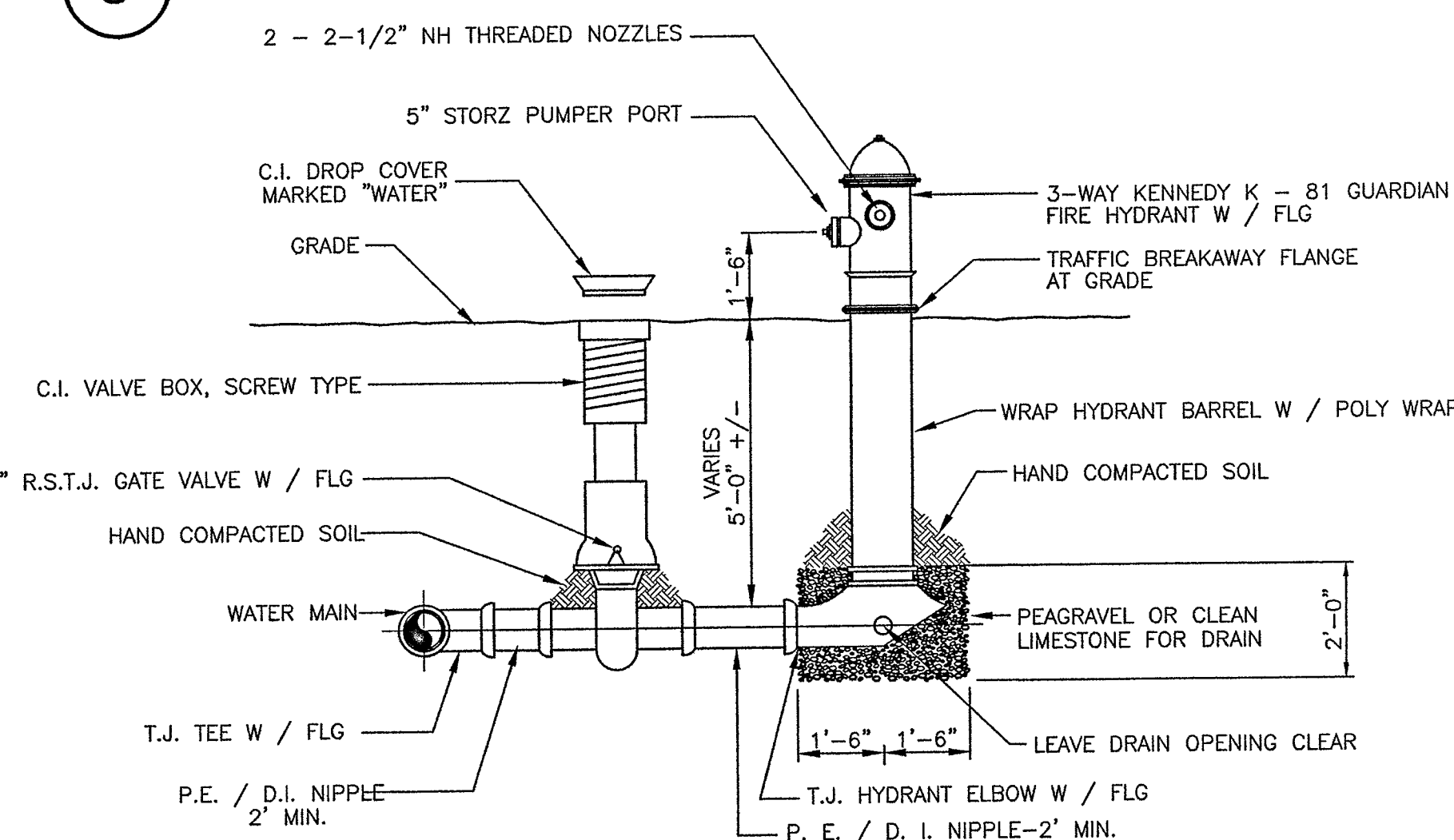


WATER MAINS SHALL BE LAID WITH AT LEAST 10 FEET HORIZONTAL SEPARATION FROM ANY EXISTING OR PROPOSED SEWER. WATER MAINS CROSSING SEWERS SHALL BE LAID TO PROVIDE A MINIMUM 18 INCHES VERTICAL SEPARATION. AT CROSSINGS, ONE FULL LENGTH OF PIPE SHALL BE INSTALLED SO BOTH JOINTS WILL BE AS FAR FROM SEWER AS POSSIBLE.

10 SEPARATION OF WATER MAINS, SANITARY SEWER AND STORM SEWERS
"HOLEY MOLEY"

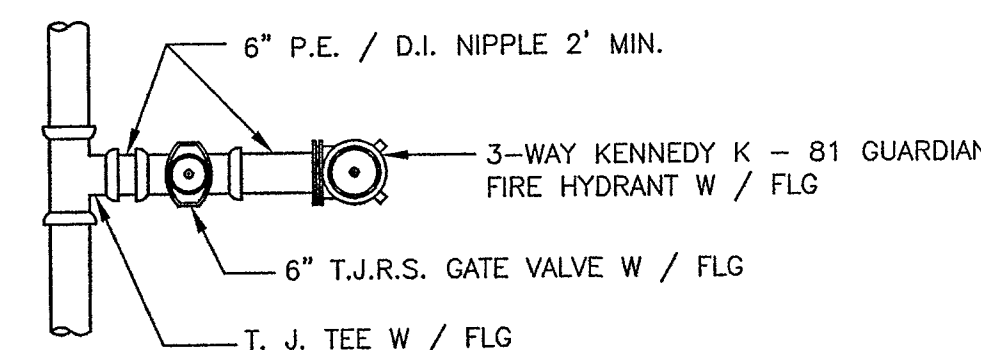


3 TEMPORARY FLUSH-OUT INSTALLATION



NOTE: FIRE HYDRANTS TO BE PAINTED FEDERAL OMAHA ORANGE OR SAFETY ORANGE DEPENDING ON PAINT SUPPLIER.
NOTE: ALL 6\"/>

7 FIRE HYDRANT WITH TYTON JOINT
RESILIENT SEATED GATE VALVE



11 HYDRANT CONNECTION DETAIL
INSTALLATION PERPENDICULAR TO MAIN

ABBREVIATIONS

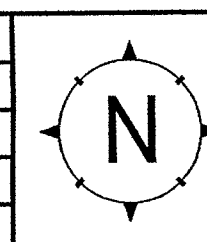
M.J. — MECHANICAL JOINT
T.J. — TYTON JOINT
T.J.R.S. — TYTON JOINT RESILIENT SEATED GATE VALVE
D.I. — DUCTILE IRON
FLG — FIELD "LOK" GASKET FOR U.S. TYTON JOINT PIPE OR EQUAL
P.E. — PLAIN END
I.P.T. — IRON PIPE THREAD
R.S. — RESILIENT SEATED GATE VALVE
P.C. — PRESSURE CLASS 350 D.I. PIPE
B/T — BETWEEN
M.H. — MAN HOLE

PRELIMINARY
DATE

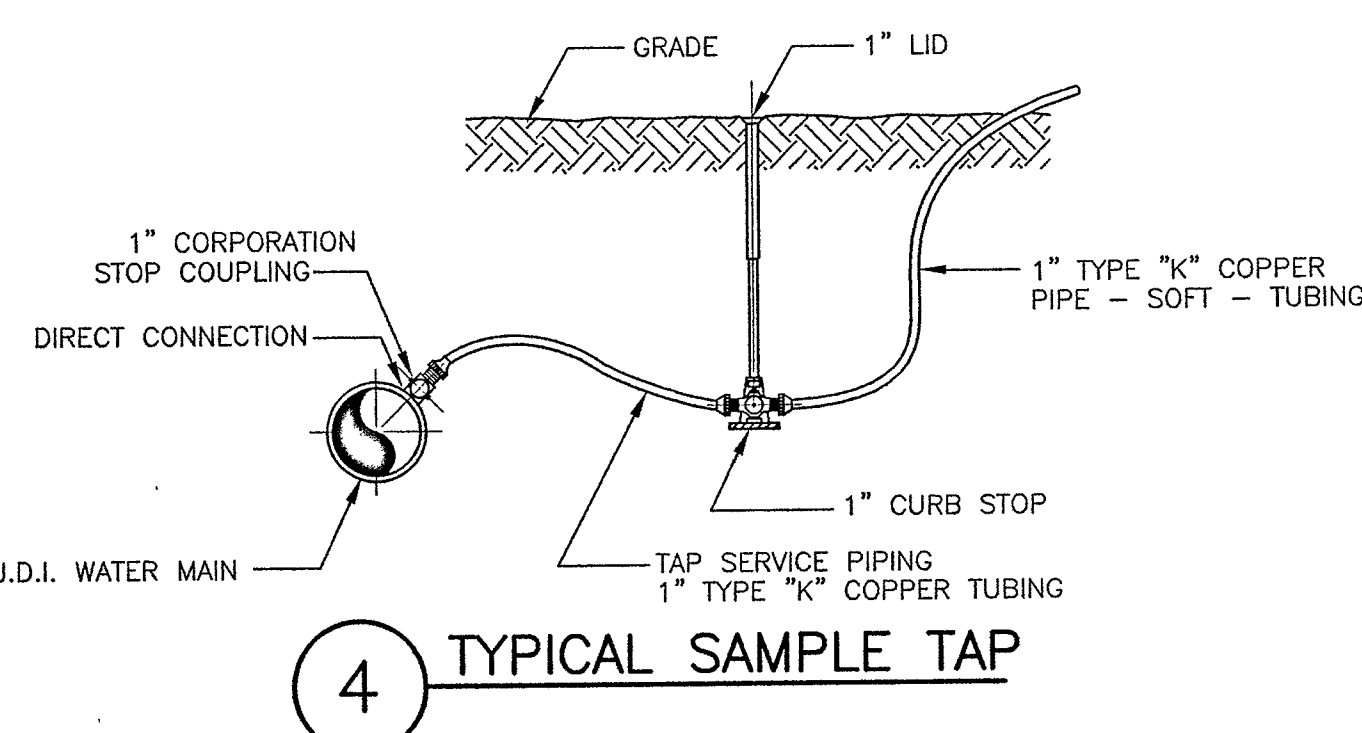
JUL 29 2009

Indiana American Water
650 Madison Street, P.O. Box 64486 - Gary, Indiana 46401-0486 - (219) 880-2385 FAX: (219) 881-2227

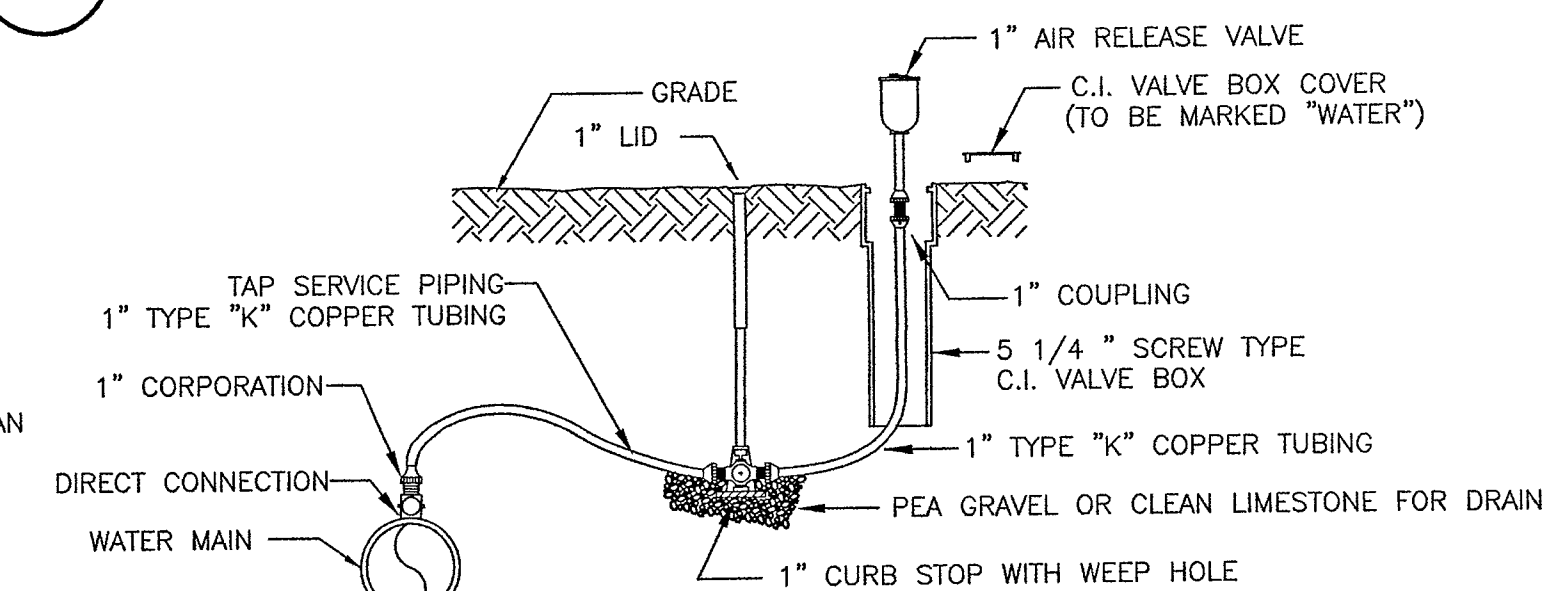
TITLE: TYPICAL WATER MAIN DETAILS			
TASK NUMBERS	DRAWN BY: T. CUSHING	ATLAS:	
	CHK'D BY: S. LEMMONS	FIELD BOOK:	
	DATE: 01/05/05	SCALE: NONE	
	CADD SHEET FILE NUMBER: Typ Water Main Details.dwg		



REVISED 01/05/05	DRAWING NO. 1778
	SHEET 4



4 TYPICAL SAMPLE TAP



8 AIR RELEASE VALVE DETAIL

GENERAL CONSTRUCTION NOTES

- INDIANA AMERICAN WATER'S SPECIFICATIONS AND ENGINEERING REQUIREMENTS FOR THE INSTALLATION OF WATER MAINS AND APPURTENANCES SHALL PREVAIL.
- ALL DUCTILE IRON WATER MAINS AND APPURTENANCES SHALL BE ENCASED (SEE SPECIFICATIONS).
- ALL FUTURE OR EXISTING PAVEMENT AREAS SHALL BE COMPACTED BY APPROVED METHODS IN HORIZONTAL LAYERS NOT TO EXCEED 6 INCHES IN LOOSE DEPTH AND IN ACCORDANCE WITH INDOT STANDARD SPECIFICATIONS, SEC. 715.
- UNSUITABLE BACKFILL MATERIAL SHALL BE REMOVED FROM THE SITE AND REPLACE WITH GRADE "B" BORROW, OR APPROVED EQUIVALENT AS DIRECTED (SEE SPECIFICATIONS).
- CONTRACTOR SHALL COMPLY WITH THE PROVISIONS OF THE INDIANA SOIL EROSION AND SEDIMENTATION CONTROL GUIDELINES.
- CONTRACTOR SHALL COMPLY WITH THE REQUIREMENTS OF ALL CONSTRUCTION PERMITS (I.E. CITY, COUNTY, STATE, RAILROAD, DNR, CORPS. OF ENGINEERS, IDEM, ETC.)
- CONTRACTOR SHALL VERIFY ALL RIGHTS-OF-WAY, PROPERTY LINES, OTHER UTILITY AND UNDER GROUND FACILITY LOCATIONS BEFORE DIGGING.
- CONTRACTORS SHALL KEEP ACCURATE DAILY RECORDS TO DEVELOP THE AS-BUILT DRAWINGS REQUIRED BY THE SPECIFICATIONS. CONSTRUCTION PROGRESS REPORTS SHALL BE PROVIDED ON A DAILY BASIS.
- U.S. PIPE FIELD "LOK" GASKET SYSTEM, OR APPROVED EQUAL, SHALL BE USED ON 4-INCH THROUGH 16-INCH PIPE (SEE SPECIFICATIONS).
- WHEN THE ELEVATION OF THE PAVEMENT IS LOWER THAN THE ELEVATION OF THE GROUND WHERE THE PIPE IS TO BE LAID, THE PIPE SHALL BE LAID WITH A COVER OF AT LEAST 60 INCHES AND NO MORE THAN 72 INCHES AS MEASURED FROM THE TOP OF THE PIPE TO FINISHED STREET PAVEMENT, UNLESS OTHERWISE DIRECTED BY THE COMPANY'S REPRESENTATIVE. WHEN THE ELEVATION OF THE PAVEMENT IS HIGHER THAN THE ELEVATION OF THE GROUND WHERE THE PIPE IS TO BE LAID, THE PIPE SHALL BE LAID WITH A COVER OF AT LEAST 60 INCHES AND NO MORE THAN 72 INCHES AS MEASURED FROM THE TOP OF THE PIPE TO FINISHED GRADE OF THE GROUND, UNLESS OTHERWISE DIRECTED BY THE COMPANY'S REPRESENTATIVE.
- CONTRACTOR SHALL COMPLY WITH ALL APPLICABLE OCCUPATIONAL SAFETY AND HEALTH ACT (OSHA) RULES AND REGULATIONS AT ALL TIMES.
- CONTRACTOR TO PRESSURE TEST, LEAK TEST, AND DISINFECT WATER MAIN PER IAW SPECIFICATIONS.
- CONTRACTOR SHALL SUBMIT A TRAFFIC CONTROL PLAN, TO BE APPROVED BY OWNER AND INDOT, PRIOR TO BEGINNING CONSTRUCTION. CONTRACTOR SHALL PROVIDE ANY AND ALL TRAFFIC CONTROL. CONSTRUCTION SIGNS, BARRICADES, ETC. SHALL BE PLACED AS NOTED OR WHERE APPROPRIATE.
- CONTRACTOR SHALL BE RESPONSIBLE TO TAKE EVERY PRECAUTION NECESSARY TO PROTECT LARGE OR DESIGNATED TREES AND ONLY REMOVE THOSE TREES THAT CAN NOT BE AVOIDED BY MEANS OF "BREAKING JOINTS".