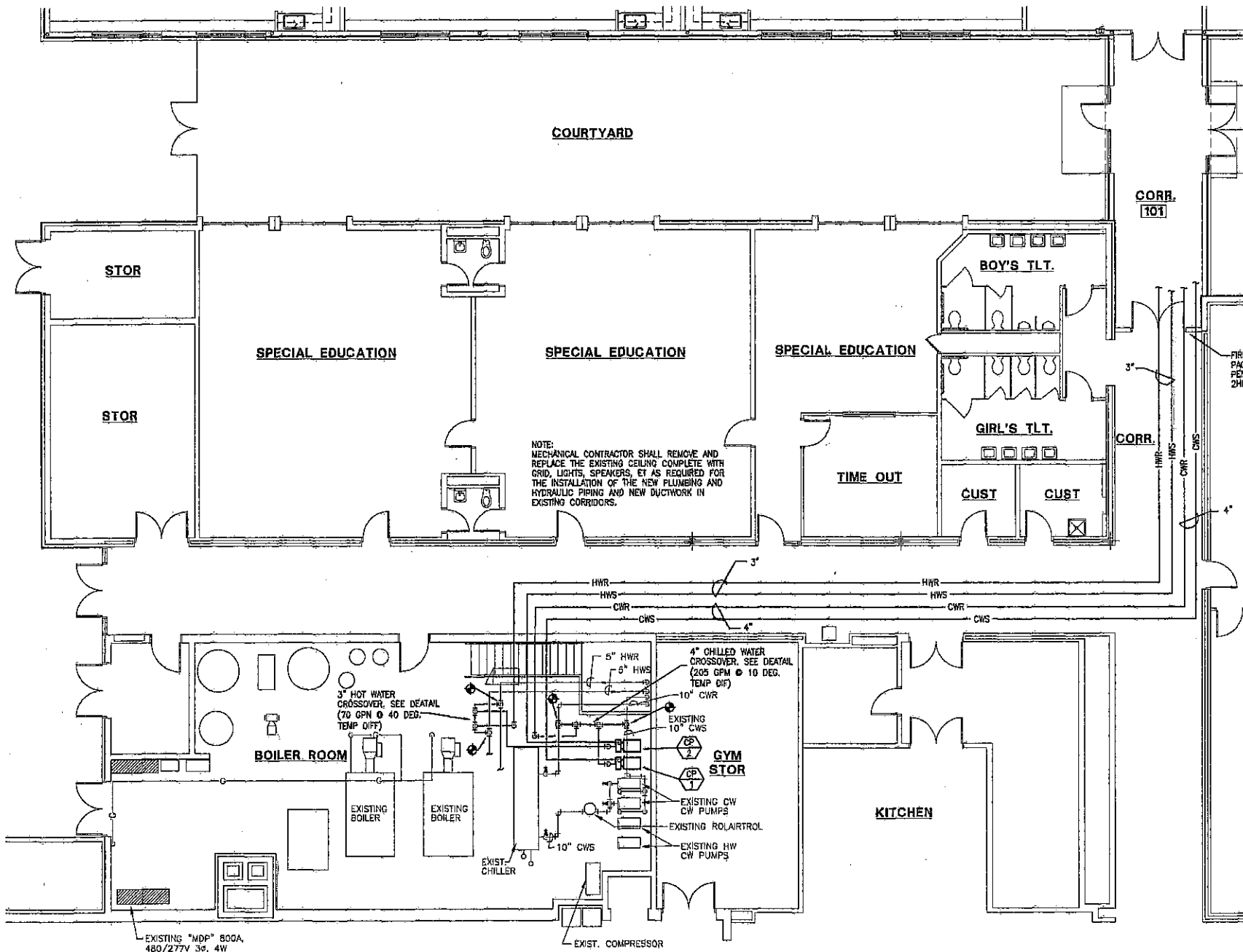
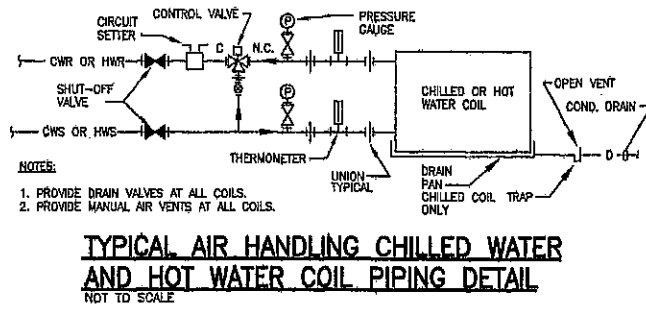
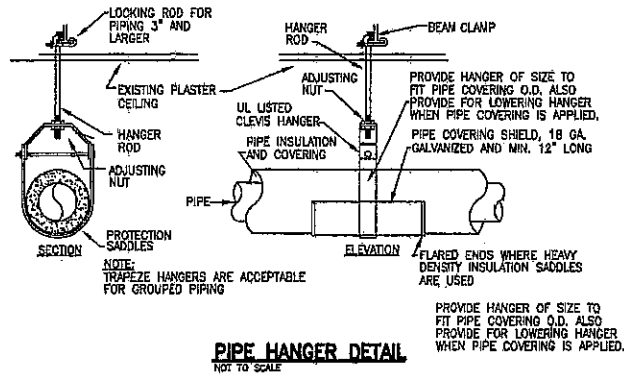
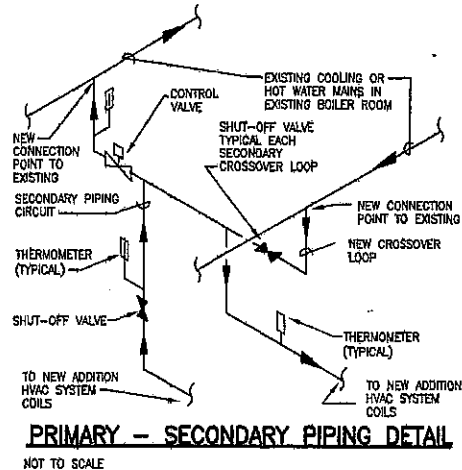
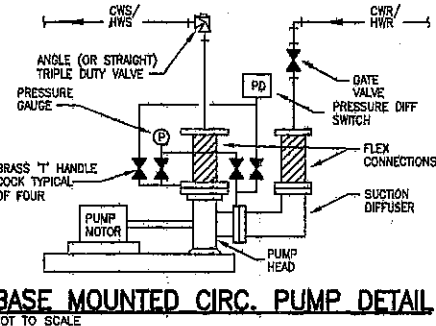
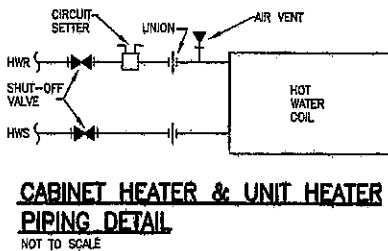
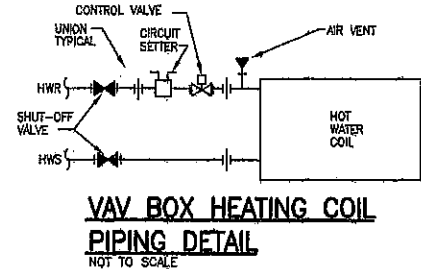


REVISIONS	BY



GENERAL HVAC NOTES

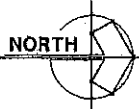
- THE SUBMISSION OF A PROPOSAL WILL BE CONSIDERED AS EVIDENCE THAT THE CONTRACTOR HAS FAMILIARIZED HIMSELF WITH THE PLANS AND BUILDING SITE. PLANS MADE SUBSEQUENT TO THE PROPOSAL FOR MATERIALS AND LABOR BECAUSE OF DIFFICULTIES ENCOUNTERED WILL NOT BE RECOGNIZED IF THEY COULD HAVE BEEN FORESEEN HAD PROPER EXAMINATION BEEN MADE.
- MECHANICAL TRADE SHALL COORDINATE ROOF AND WALL FLASHING AND EXACT PENETRATION LOCATIONS WITH GENERAL TRADE.
- COORDINATE LOCATION OF GRILLES AND DIFFUSERS WITH LIGHTS, EQUIPMENT, CEILING GRID, ETC. REFERENCE REFLECTED CEILING PLANS FOR ACTUAL LOCATIONS.
- DRAWINGS ARE DIAGNOSTIC AND GENERALLY INDICATIVE OF THE WORK. PIPING AND SYSTEMS SHALL FOLLOW ARRANGEMENT AS MUCH AS POSSIBLE, HOWEVER, ACTUAL FIELD CONDITIONS SHALL dictate. PROVIDE NECESSARY MODIFICATIONS TO MEET FIELD CONDITIONS AND AVOID CONFLICT WITH OTHER TRADES. IF RESOLUTION CANNOT BE REACHED WITHOUT COMPROMISING THE DESIGN, THESE CONFLICTS SHALL BE PRESENTED TO THE ENGINEER/ARCHITECT FOR RESOLUTION. IN CONFLICT AREAS, COMPLETE ONLY WORK NOT AFFECTED BY THE CONFLICT PRIOR TO RESOLUTION.
- THE FLOOR PLANS DO NOT SHOW ALL VALVES, FITTINGS, APPURTENANCES, DUCT TRANSITIONS, ACCESS PANELS, ELEVATION CHANGES, AND WHARF. OTHER ITEMS CALLED FOR BY DETAILS AND SPECIFICATIONS. REFER TO DETAILS AND SPECIFICATIONS AND WHERE REQUIRED, THESE ITEMS SHALL BE PROVIDED WITHOUT ADDITIONAL COST FOR A COMPLETE AND OPERATING SYSTEM.
- COORDINATE ROUTING OF PIPING, DUCTWORK, ETC. PRIOR TO STARTING INSTALLATION. MECHANICAL AND ELECTRICAL TRADES SHALL REVIEW AVAILABLE SPACE AND COORDINATE ALL SYSTEM ROUTING PRIOR TO INSTALLATION. FIELD VERIFY ALL TRIMMING, CEILING HEIGHTS, ETC. BEFORE ORDERING OR FABRICATING SYSTEMS.
- MECHANICAL CONTRACTOR SHALL PROVIDE ALL CUTTING AND/OR PATCHING OF EXISTING WALLS, CEILING AND FLOORS AS REQUIRED FOR NEW AND/OR MODIFICATION OF MECHANICAL WORK, EXCEPT WHERE STRUCTURAL SUPPORT IS REQUIRED OR WHERE WORK CAN BE COORDINATED WITH OTHER TRADES.
- CONNECTIONS TO EQUIPMENT SHALL CONFORM TO MANUFACTURER'S SPECIFICATIONS.
- ALL HANGER SYSTEMS FOR PIPING AND EQUIPMENT SHALL BE SECURED TO BUILDING STRUCTURAL SYSTEM.
- ALL WORK AND MATERIALS SHALL BE INSTALLED IN ACCORDANCE WITH ALL APPLICABLE ORDINANCES AND REGULATIONS HAVING JURISDICTION.
- PROVIDE SHUTOFF VALVES AT ALL BRANCH LINES OFF MAIN. VALVES SHALL BE ACCESSIBLE. WHERE VALVES MUST BE CONCEALED IN BUILDING CONSTRUCTION, PROVIDE ACCESS PANELS. REFER TO ARCHITECTURAL DRAWINGS FOR ACCESS PANELS PROVIDED BY GENERAL TRADE AND PROVIDE ADDITIONAL AS REQUIRED.
- MAINTAIN SAFE AND ORDERLY JOB CONDITIONS. PROTECT ALL AREAS, BARRICADE AND SEAL WORK AREAS FROM OCCURRED AREAS TO PREVENT INJURIES, SPREAD OF DUST AND DIRT AND UNAUTHORIZED ACCESS. PROVIDE FIRE EXTINGUISHERS IN THE WORK AREA. PROVIDE LIGHTING AND SIGNAGE AS REQUIRED.
- PROVIDE MANUAL VOLUME DAMPERS AT ALL DIFFUSER/GRILLE RUN-OUTS AT MAIN DUCT TAP.

HVAC LEGEND

AP	ACCESS PANEL	— D —	EQUIPMENT DRAIN LINES
AT	ABOVE FINISH FLOOR	— B —	BALANCING VALVE
BAS	BUILDING AUTOMATION SYSTEM	— C —	CHECK VALVE
EA	EXHAUST AIR	— S —	SHUT-OFF VALVE
EXST.	EXISTING	— V —	SHUT-OFF VALVE ON RISER
FM	FLOOR MOUNTED	— G —	GLOBE VALVE
GO	GENERAL CONTRACTOR/TRADE	— C —	CONTROL VALVE
GRV	GRAVITY ROOF VENTILATOR	— F —	FLOW CONTROL VALVE (GATE, CHECK, BALANCING VALVES)
HWR	HOT WATER RETURN	— S —	FLOW SENSOR
HWS	HOT WATER SUPPLY	— T —	THERMOMETER
NO	MECHANICAL CONTRACTOR/TRADE	— P —	PRESSURE GAUGE
OA	OUTSIDE AIR	— R —	REDUCER
RA	RETURN AIR	— B —	BACKFLOW PREVENTER
REL	RELIEF AIR	— T —	THERMOSTAT/TEMPERATURE SENSOR
SA	SUPPLY AIR	— N —	NITE STAT
TOC	TEMPERATURE CONTROL CONTRACTOR	— D —	DUOT VOLUME DAMPER (MANUAL)
TA	TRANSFER AIR	— A —	DUOT VOLUME DAMPER (AUTOMATIC - BY TOC)
— HWR —	HOT WATER RETURN	— A —	AIR INLET OR OUTLET LEGEND
— HWS —	HOT WATER SUPPLY	— A —	A - DIFFUSER OR
— CWR —	CHILLED WATER RETURN	— B —	B - REGISTER SIZE
— CWS —	CHILLED WATER SUPPLY	— C —	C - AS PATTERN
		— D —	D - CH
		— E —	E - TYPE (SEE GRILLE & DIFFUSER SCHEDULE)
		— S —	SUPPLY AIR DIFFUSER
		— R —	RETURN OR EXHAUST GRILLE
		— C —	CONNECT TO EXISTING AT POINT INDICATED

HYDRONIC PLAN - EXISTING BUILDING

1/8" = 1'-0"



MARK NO.	DESCRIPTION	TYPE	GPM	DISCH. HEAD (FT.)	HP	V	P	I	RPM	REMARKS
CP 1	CHILLED WATER	BASE MOUNTED	205	48	5	480	3	60	1750	BELL & GOSSETT SERIES 1510 2-1/2DB
CP 2	HOT WATER	BASE MOUNTED	70	48	3	480	3	60	1750	BELL & GOSSETT SERIES 1510 1-1/2AC



HYDRONIC PLANS - EXISTING BUILDING
LIBERTY ELEMENTARY SCHOOL
EARLY LEARNING CENTER ADDITION & REMODEL
50-1 W. COUNTY ROAD 900 N.
CHESTERTON, INDIANA
gerometta & kinel architects, inc.



DATE: 9-24-09
SCALE:
DRAWN:
JOB: 2914
SHEET:

M2.3