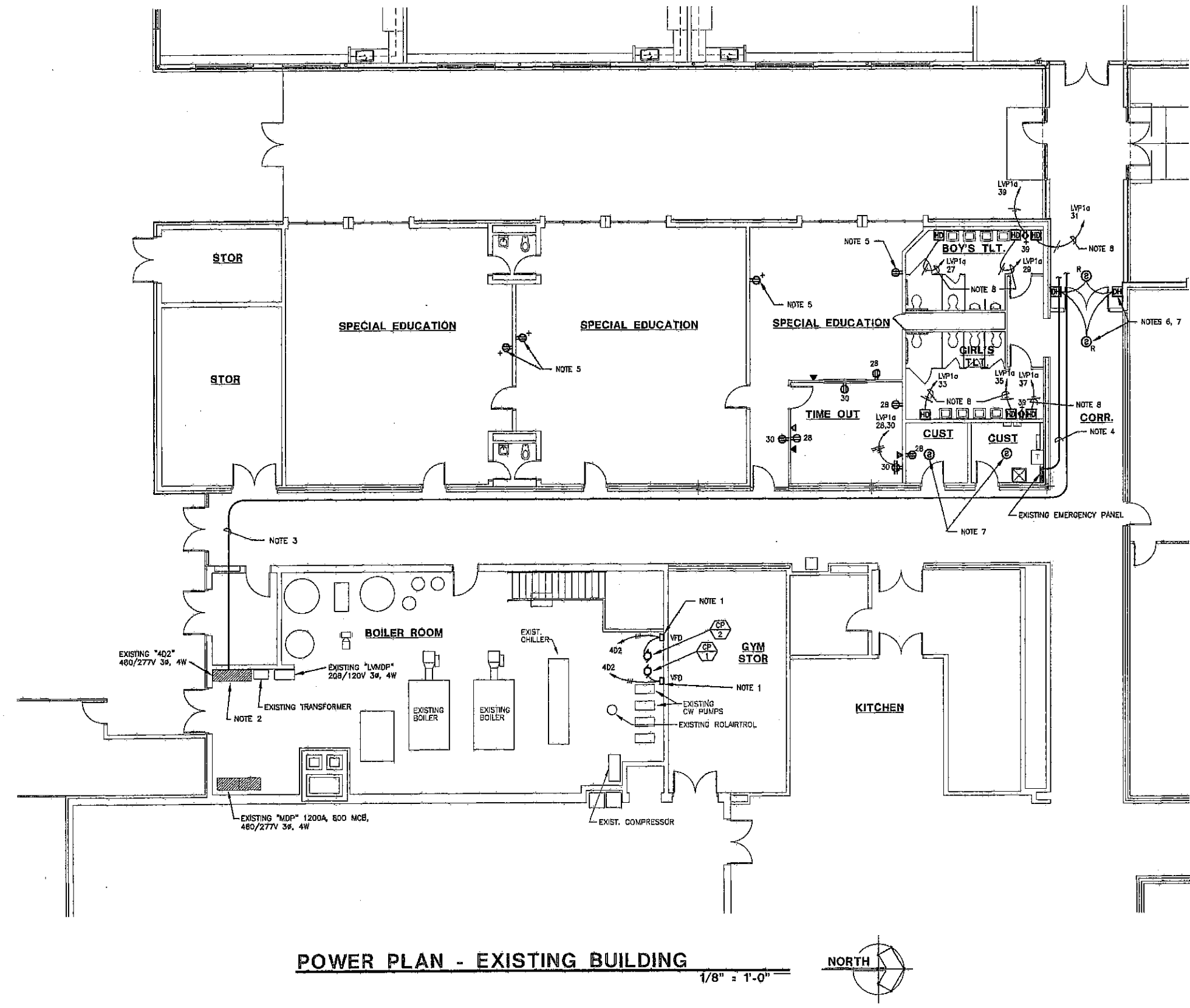
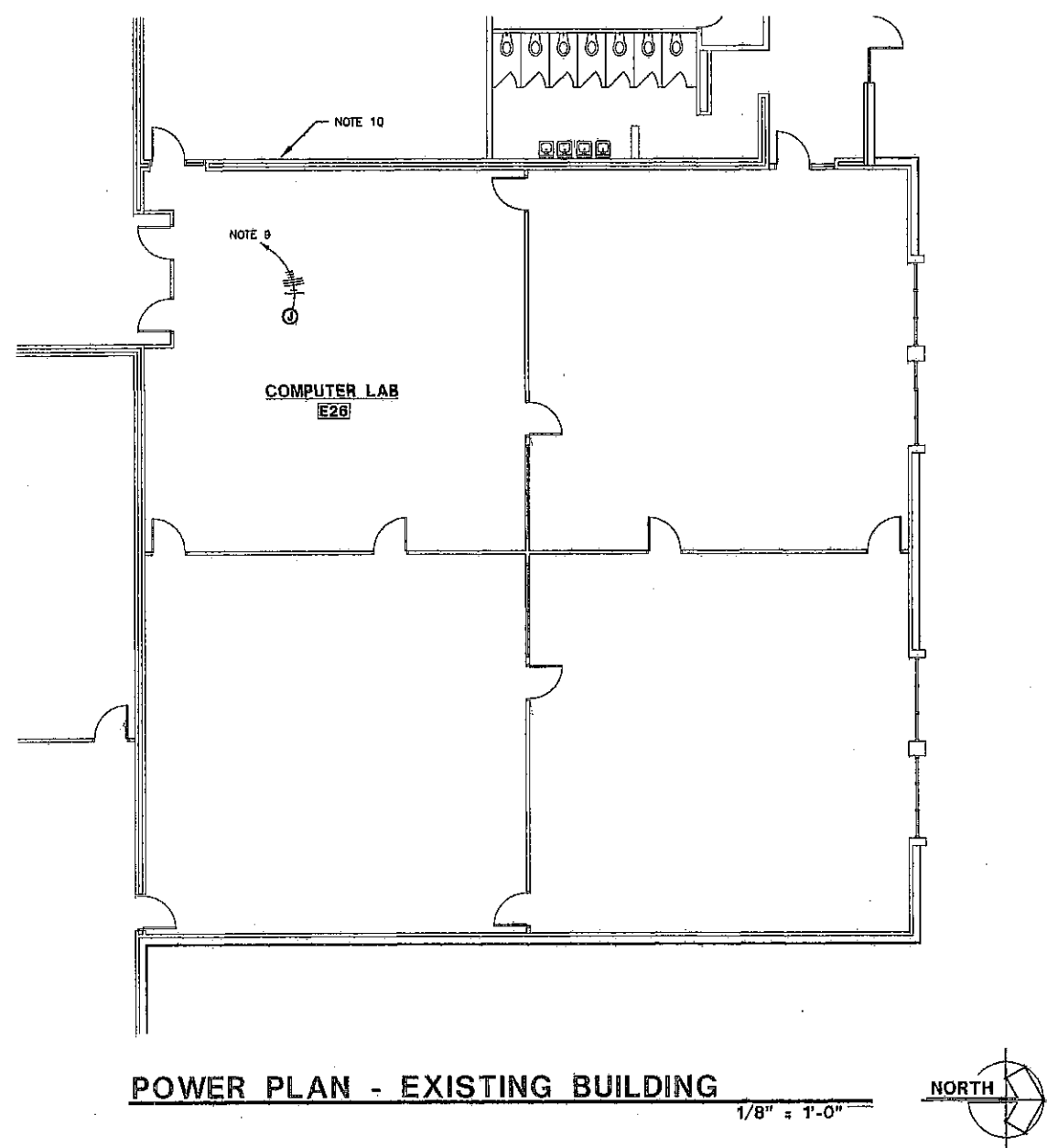
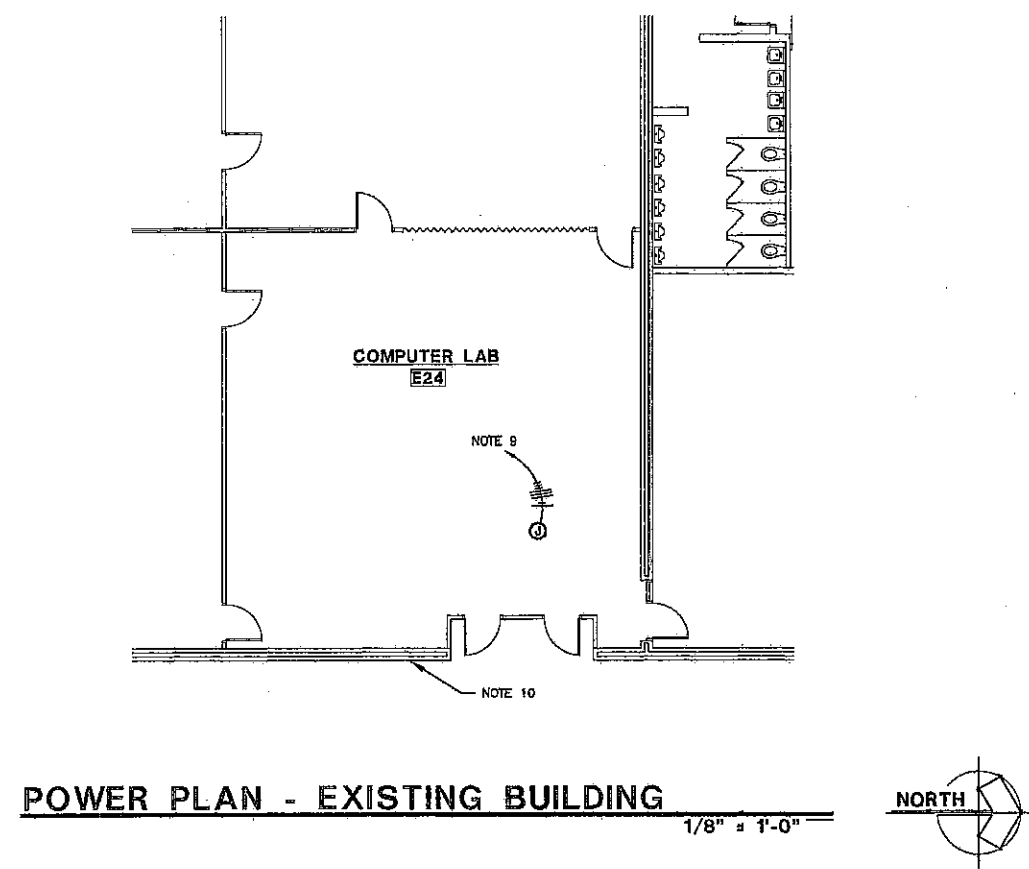
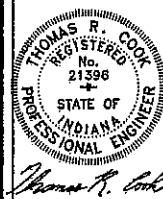


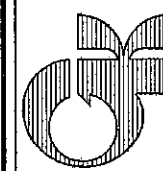
REVISIONS	BY



- PLAN NOTES:**
1. WTD BY OTHERS, CONNECTED BY E.C. FEED FROM PANEL "402".
 2. PROVIDE PROPER SIZE PIPES FOR NEW PUMPS IN EXISTING SWITCHES. COORDINATE WITH ACTUAL PUMP MOTORS PROVIDED.
 3. 2 SETS OF (4) #10/4/10 IN 2 1/2" TO HVAC 114. SEE SHEET E1.1 FOR CONTINUATION.
 4. (3) 20A/1P CIRCUITS FROM EXISTING EMERGENCY PANEL TO NEW ADDITION. SEE SHEETS E1.1 FOR CONTINUATION.
 5. CONNECT TO NEAREST RECEPTACLE PANEL.
 6. DOOR HOLDS TO BE CONNECTED TO EXISTING FIRE ALARM CONTROL PANEL. PROVIDE PROGRAMMING SUCH THAT THE DOORS WILL BE CLOSED IF SMOKE DETECTORS WITHIN 50' OF DOORS GO INTO ALARM.
 7. CONNECT NEW FIRE ALARM DEVICE TO EXISTING FIRE ALARM SYSTEM. PROVIDE ALL EXPANSION BOARDS IN EXISTING FIRE ALARM CONTROL PANEL AS REQUIRED. INCLUDE ALL REPROGRAMMING OF EXISTING SYSTEM AS REQUIRED. RECALCULATE BATTERY BACKUP REQUIREMENTS AND PROVIDE ADDITIONAL BATTERIES IF REQUIRED.
 8. (2) #10/6/100, IN 3/4".
 9. PROVIDE (4) 120V/1P CIRCUITS FROM NEAREST PANEL. TERMINATE IN JUNCTION BOX ABOVE L.L.G. CEILING.
 10. REFER TO SHEETS A1.4 & A1.5 FOR LOCATION AND ADDITIONAL INFORMATION.



LIBERTY ELEMENTARY SCHOOL
EARLY LEARNING CENTER ADDITION & REMODEL
50-1 W. COUNTY ROAD 900 N.
CHESTERTON, INDIANA
gerometta & kniel architects, inc.



DATE	8-24-08
SCALE	
DRAWN	
JOB	291+
SHEET	E1.2