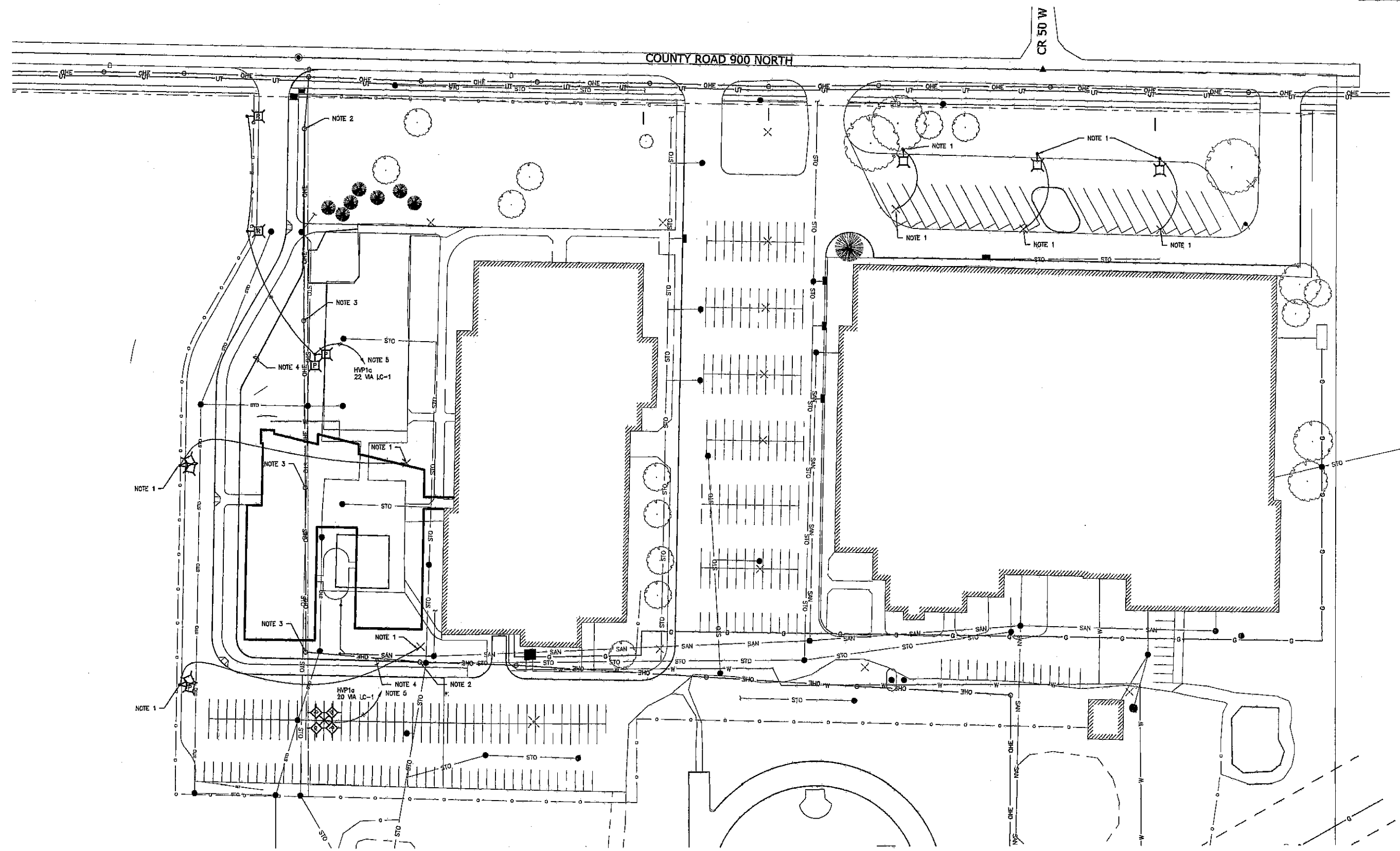
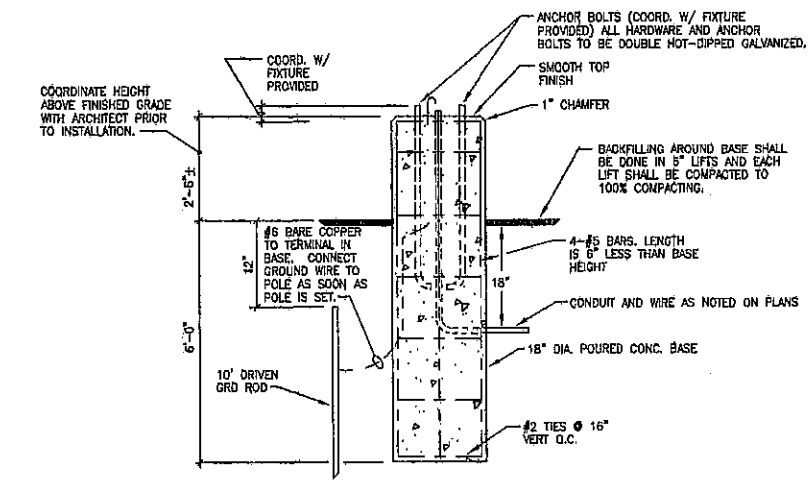


REVISIONS	BY

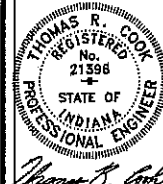


ELECTRICAL SITE PLAN  
1" = 50'  
NORTH

- PLAN NOTES:
1. RELOCATE EXISTING POLE AND LIGHT FIXTURE(S) TO NEW LOCATION INDICATED. PROVIDE NEW POLE BASE AT NEW LOCATION. EXTEND CONDUIT AND CONDUCTORS TO NEW LOCATION. PROVIDE JUNCTION BOX, ALL CONDUIT, CONDUCTORS, ETC. AS REQUIRED TO EXTEND CIRCUIT TO NEW LOCATION.
  2. ROUTE (4) 4" CONDUITS UP EXISTING POLE.
  3. REMOVE EXISTING POLE. REROUTE ALL ELECTRICAL, FIBEROPTIC CABLE AND TELEPHONE LINES THRU NEW 4" CONDUITS. COORDINATE EXACT REQUIREMENTS WITH UTILITY COMPANIES PRIOR TO ANY WORK OCCURRING.
  4. PROVIDE (4) 4" CONDUITS FROM EXISTING POLES AS INDICATED. ROUTE AROUND PERIMETER OF NEW ADDITION AS INDICATED. ALL ELBOWS TO BE WIDE RADIUS ELBOWS. REFER TO SPECIFICATIONS FOR ADDITIONAL INFORMATION.
  5. CONNECT TO CIRCUIT INDICATED VIA LIGHTING CONTRACTOR. CONTRACTOR TO BE CONTROLLED VIA BUILDING MANAGEMENT SYSTEM. COORDINATE CONNECTION REQUIREMENTS WITH NETWORK SYSTEM SUPPLIER.



AREA LIGHTING POLE  
BASE DETAIL  
NOT TO SCALE



ELECTRICAL SITE PLAN  
**LIBERTY ELEMENTARY SCHOOL**  
EARLY LEARNING CENTER ADDITION & REMODEL  
50-1 W. COUNTY ROAD 900 N.  
CHESTERTON, INDIANA  
gerometta & kinel architects, inc.