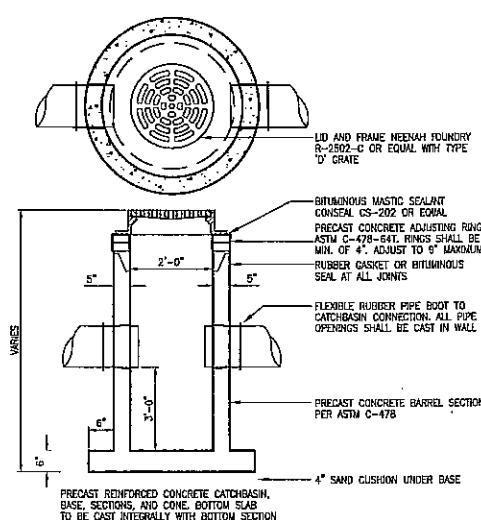
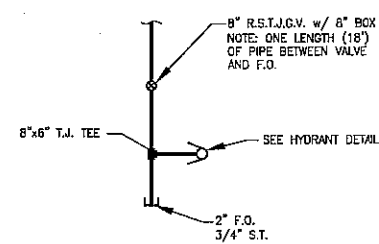


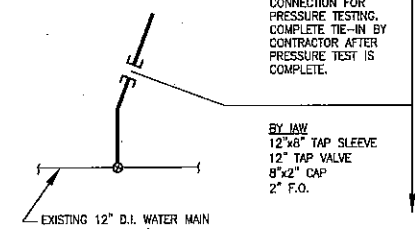
End Section Rip Rap Placement



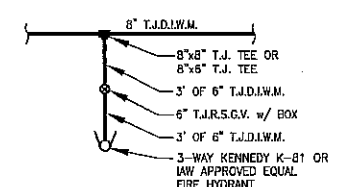
Typical Yard Inlet



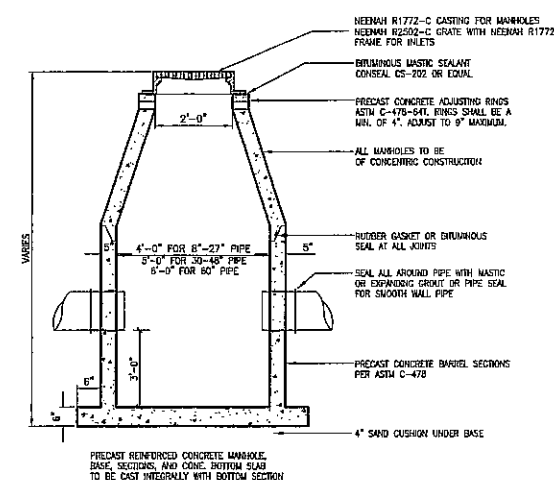
End Main Detail



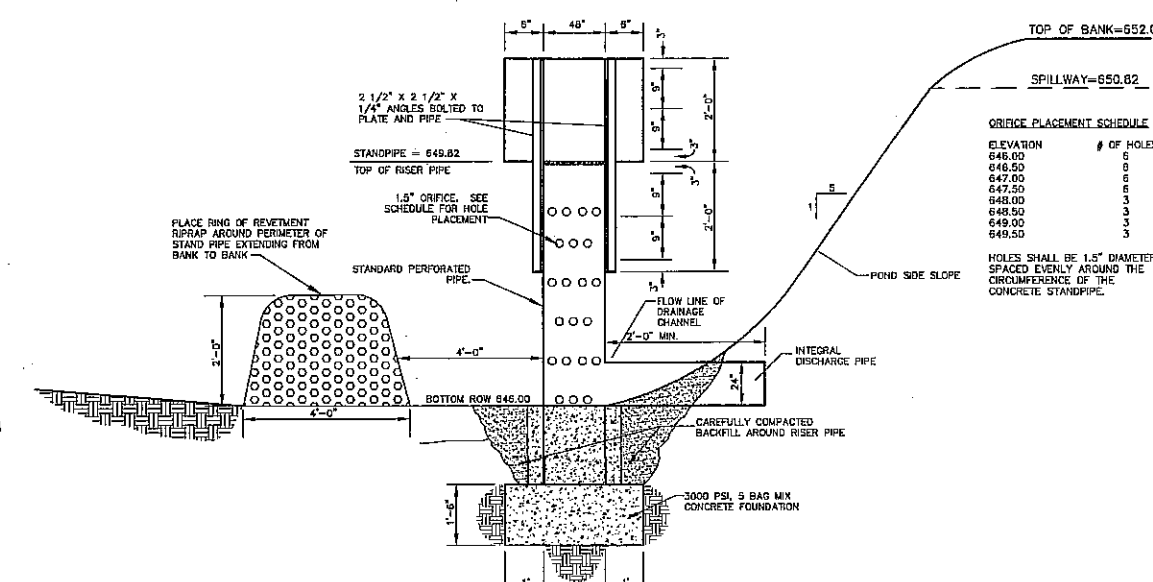
Tie-in Detail



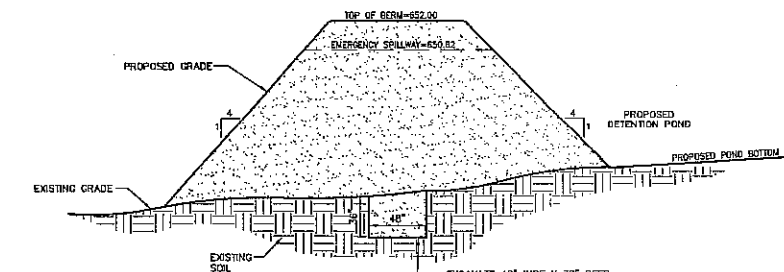
Typical Hydrant Detail



Storm Sewer Manhole or Inlet



Standpipe Detail



Pond Berm Detail

McMAHON
ENGINEERS ARCHITECTS
952 South State Road 2
Valparaiso, Indiana 46385
Tel: (219) 462-7743 Fax: (219) 464-8248
mcm@mcmgrp-in.com

Construction Details
 Liberty Elementary and Middle Schools - Duneland School Corp.
 Liberty Township, Porter County, Indiana

DESIGNED RSP	DRAWN RSP
PROJECT NO. 00528-59-0134.00	
DATE September 24, 2009	
SHEET NO.	

C501

Page 10 of 10

ALL 5/18