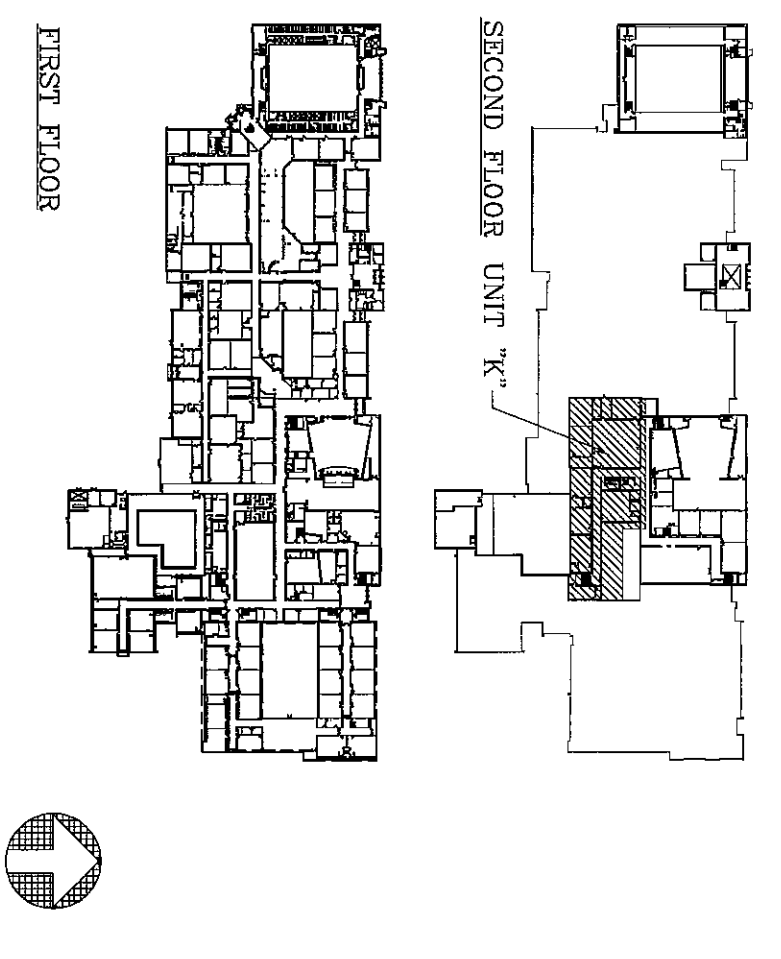


1 FLOOR PLAN UNIT "C"  
13.2 SCALE: 1/8"=1'-0" SECOND FLOOR

KEY PLAN



- SYMBOLS/LEGEND**
- | SYMBOL | DESCRIPTION  |
|--------|--|
| 1      | 1. ROUTE COAX CABLES (FIBER ROP-6 TYPE) TO EQUIPMENT ROOM (ER), TERMINATE BOTH ENDS AND TEST.  |
| 2      | 2. ROUTE POWER CABLE (FIBER ROP-6 TYPE) TO EQUIPMENT ROOM (ER) OR TELECOMMUNICATION ROOM (TR) AS SHOWN IN DRAWING 4.1 (1). OUTDOOR CABLES TO HAVE A SEPARATE POWER RUN FOR THE HEATER. |
| 3      | 3. ROUTE DATA CABLE (RS-485) FOR OUTDOOR PAN/ZOOM CAMERAS PER MFG. REQUIREMENTS TO EQUIPMENT ROOM (ER) AS SHOWN IN DRAWING 4.1 (1).  |
| 4      | 4. ROUTE COAX AND POWER CABLES IN EXISTING TELECOMMUNICATION TRAYS WHERE POSSIBLE.   |
| 5      | 5. REFERENCED NOTES BELOW ARE NOT NECESSARILY USED ON EVERY DRAWING.   |
- GENERAL NOTES**
1. EXISTING TRAY SYSTEM
  2. INDOOR CAMERA, WV-CW74AF MOUNTED IN DROP CEILING, SEE DRAWING 5.1 (4).
  3. INDOOR CAMERA, WV-224CF, MOUNTED IN DROP CEILING, SEE DRAWING 5.1 (4).
  4. INDOOR CAMERA, WV-CW74AS MOUNTED ON WALL, SEE DRAWING 5.1 (3).
  5. INDOOR CAMERA, WV-CW224CF MOUNTED ON WALL, SEE DRAWING 5.1 (3).
  6. OUTDOOR FIXED CAMERA, WV-CW574 MOUNTED AS SHOWN ON DRAWING 5.1 (6).
  7. OUTDOOR PAN & TILT/ZOOM CAMERA, WV-CW-864A MOUNTED AS SHOWN ON DRAWING 5.1 (2).