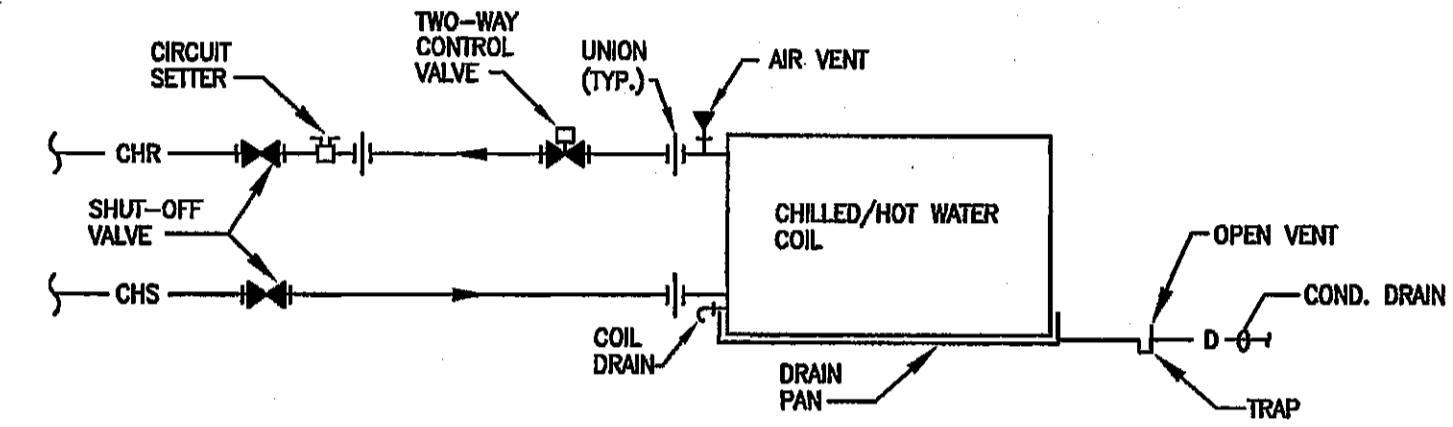
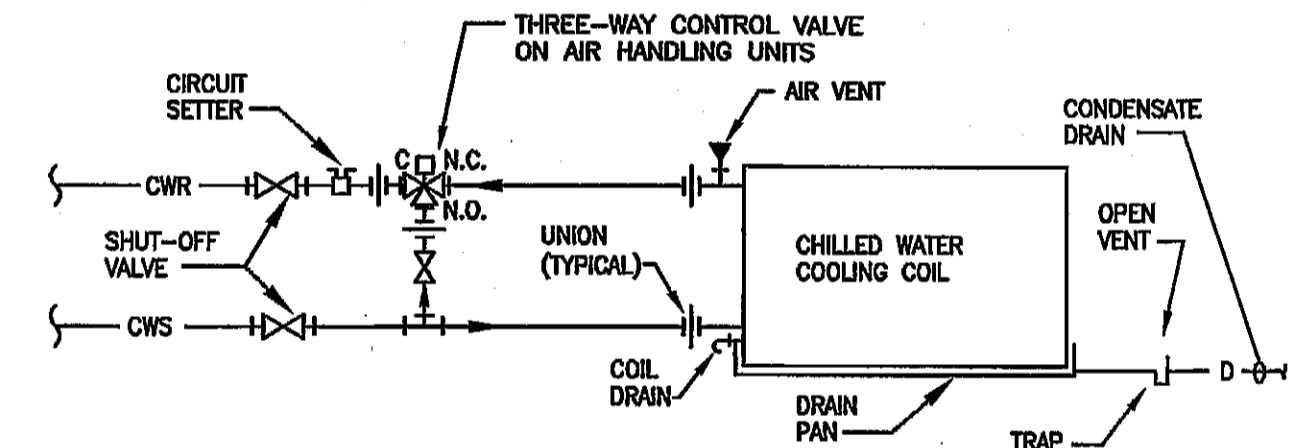


**TYPICAL PLAN VIEW OF UNIT VENTILATOR AT EXISTING CABINET**  
NOT TO SCALE



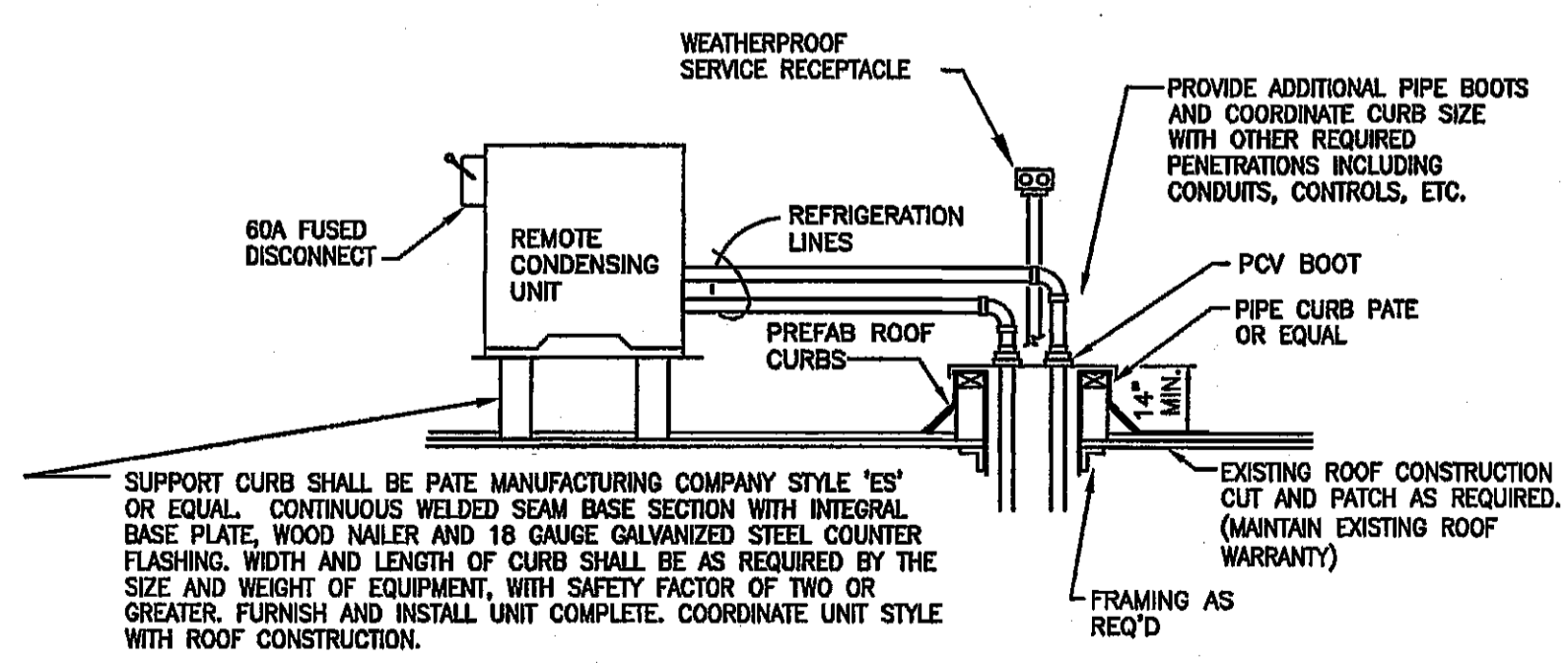
- NOTES:  
1. CIRCUIT SETTERS TO BE INSTALLED IN PIPING IN UNIT ENCLOSURE  
2. PROVIDE DRAIN VALVES AT ALL COILS.  
3. PROVIDE MANUAL AIR VENTS AT ALL COILS.

**TYPICAL FAN COIL UNIT AND UNIT VENTILATOR CHILLED/HOT WATER COIL PIPING**  
NOT TO SCALE

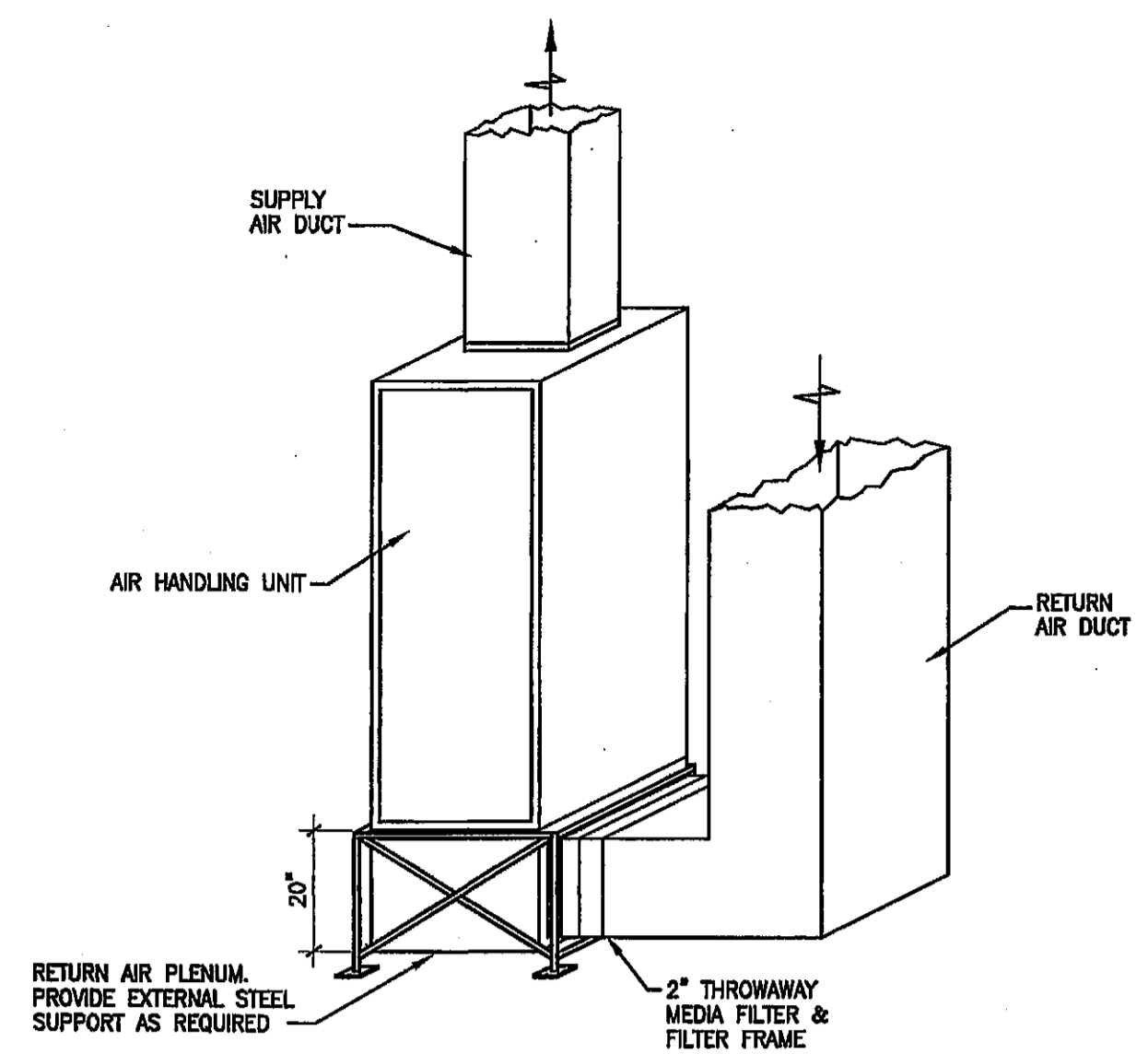


- NOTES:  
1. PROVIDE THERMOMETER AT SUPPLY AND RETURN COIL CONNECTIONS AT AIR HANDLING UNITS.  
2. PROVIDE DRAIN VALVES AT ALL COILS.  
3. PROVIDE MANUAL AIR VENTS AT ALL COILS.

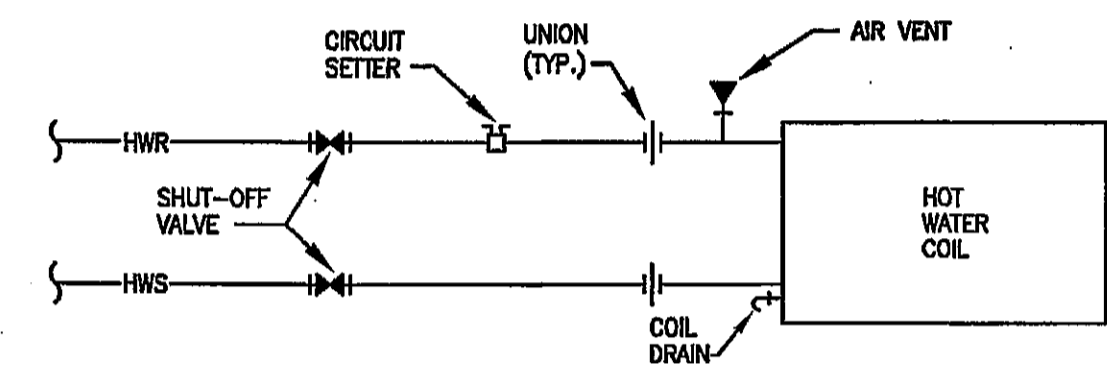
**TYPICAL AIR HANDLING UNIT CHILLED WATER COIL PIPING DETAIL**  
NOT TO SCALE



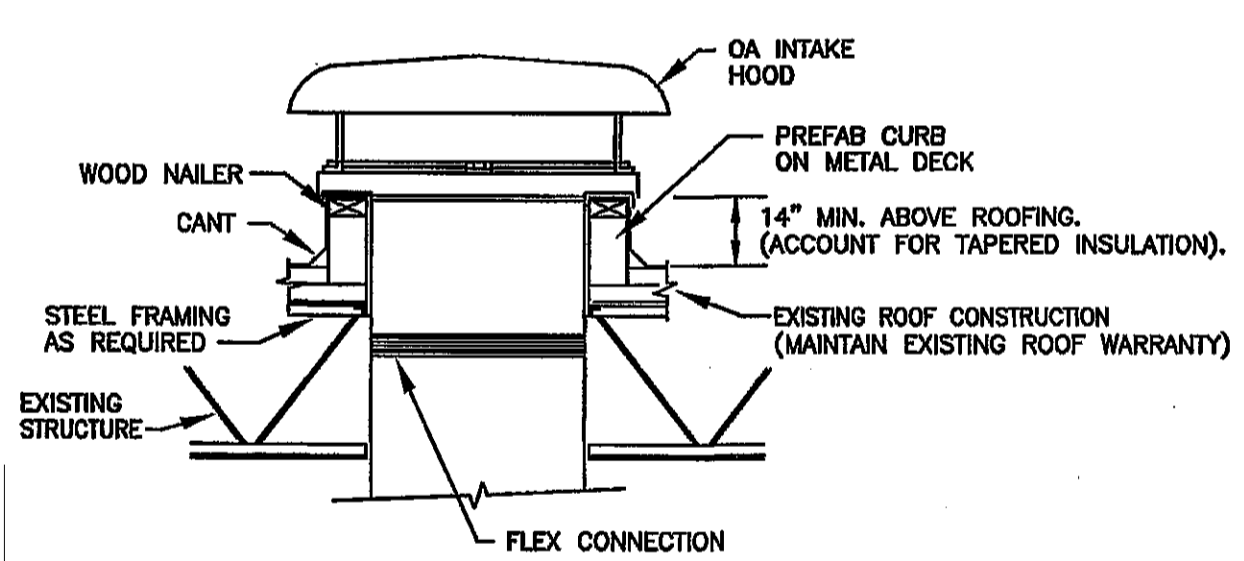
**PIPE CURB DETAIL**  
NOT TO SCALE



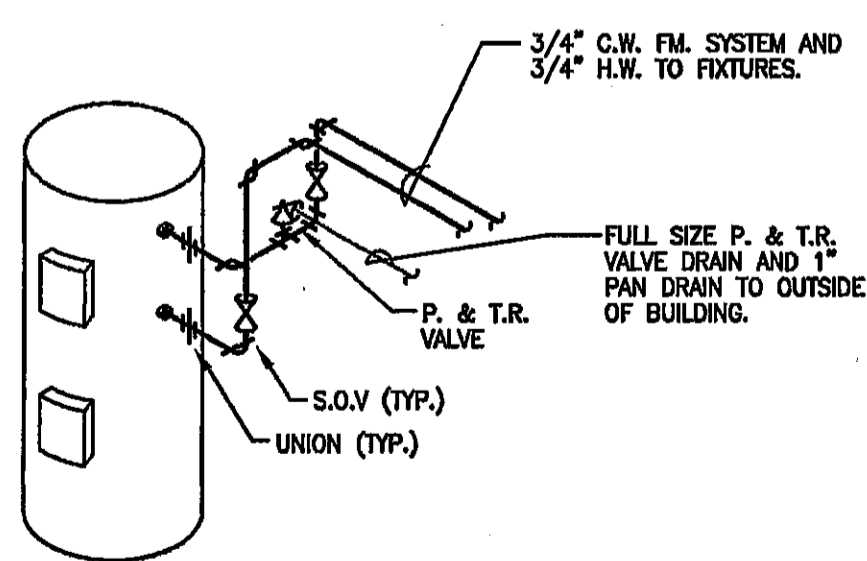
**RETURN AIR PLENUM DETAIL**  
NOT TO SCALE



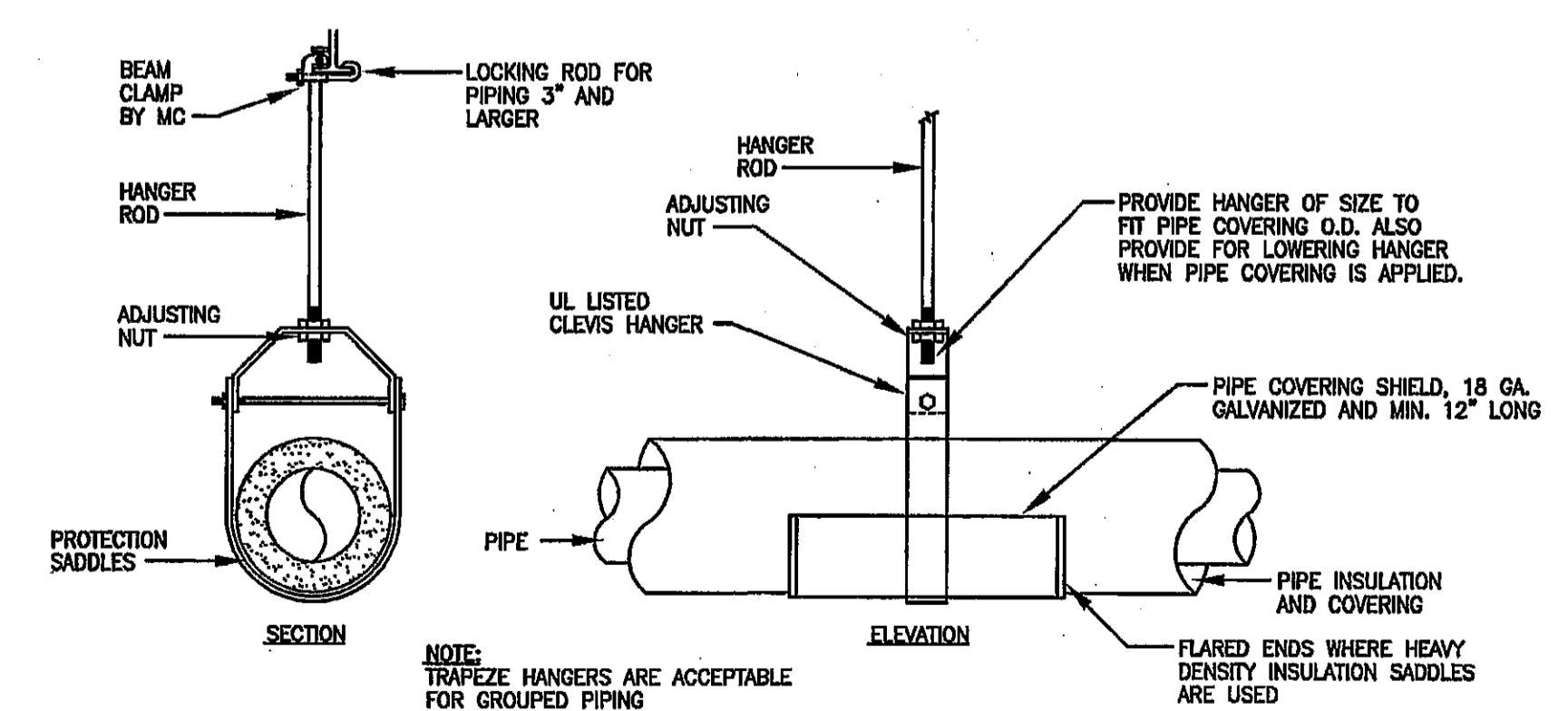
**CABINET HEATER & UNIT HEATER PIPING DETAIL**  
NOT TO SCALE



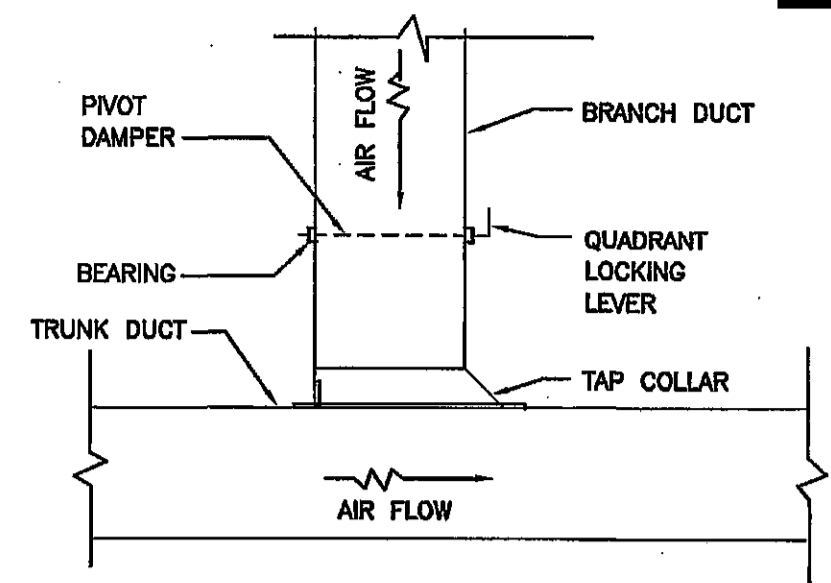
**OUTSIDE AIR INTAKE HOOD DETAIL**  
NOT TO SCALE



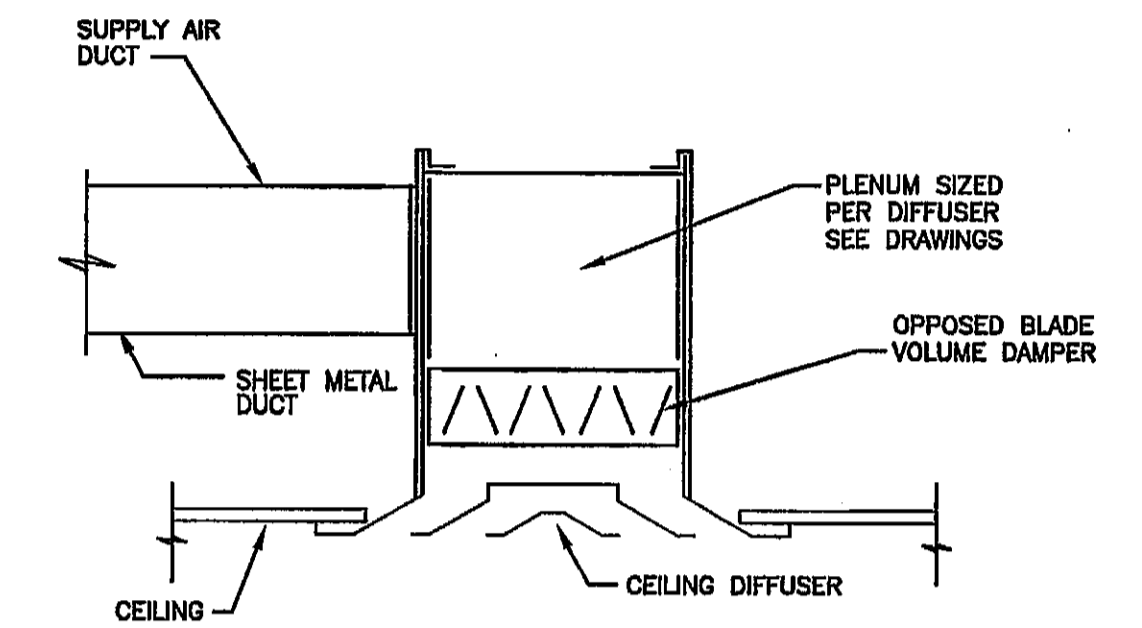
**ELECTRIC WATER HEATER-PIPING DIAGRAM**  
NOT TO SCALE



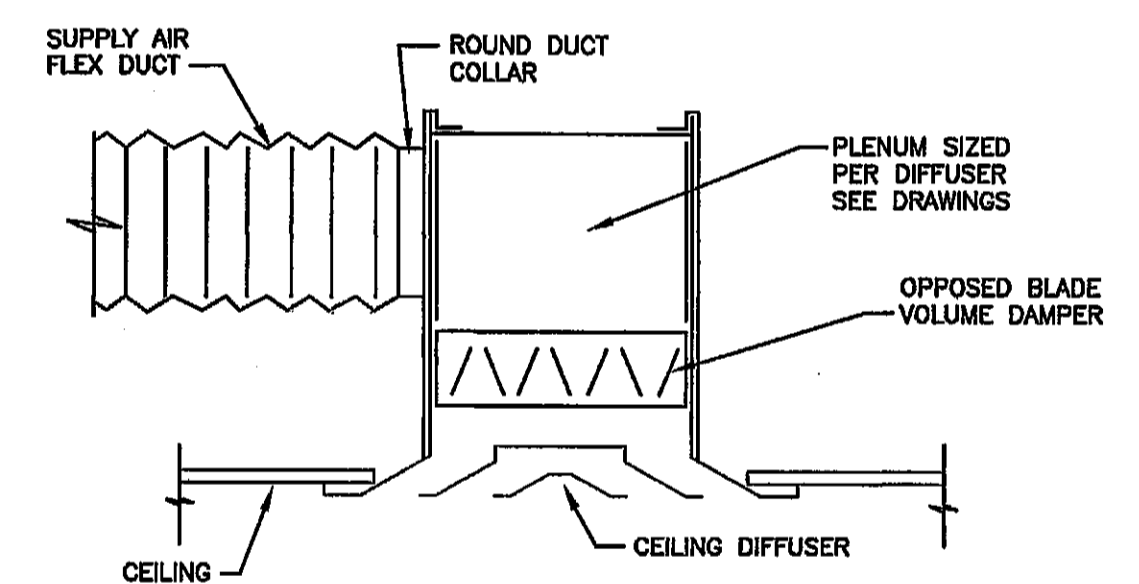
**STANDARD PIPE HANGER DETAIL**  
NOT TO SCALE



**RETURN AIR DUCT BRANCH DETAIL**  
NOT TO SCALE



**CEILING DIFFUSER DETAIL**  
NOT TO SCALE

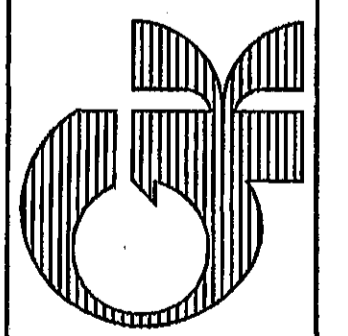


**CEILING DIFFUSER DETAIL**  
NOT TO SCALE

**M/E DESIGN SERVICES**  
MECHANICAL/ELECTRICAL CONSULTING ENGINEERS  
120 South Hill Street  
Mishawaka, Indiana 46544  
(574) 256-1914  
JOB NO. 5021



MECHANICAL DETAILS  
**NEW DUNELAND ADMINISTRATION CENTER**  
DUNELAND SCHOOL CORPORATION  
geronetta & kinel architects, inc.  
CHESTERTON, IN



DATE	10-06-04
SCALE	AS SHOWN
DRAWN	J.L.H.
JOB	2103
SHEET	M-6
OF	SHEETS

10-11-06