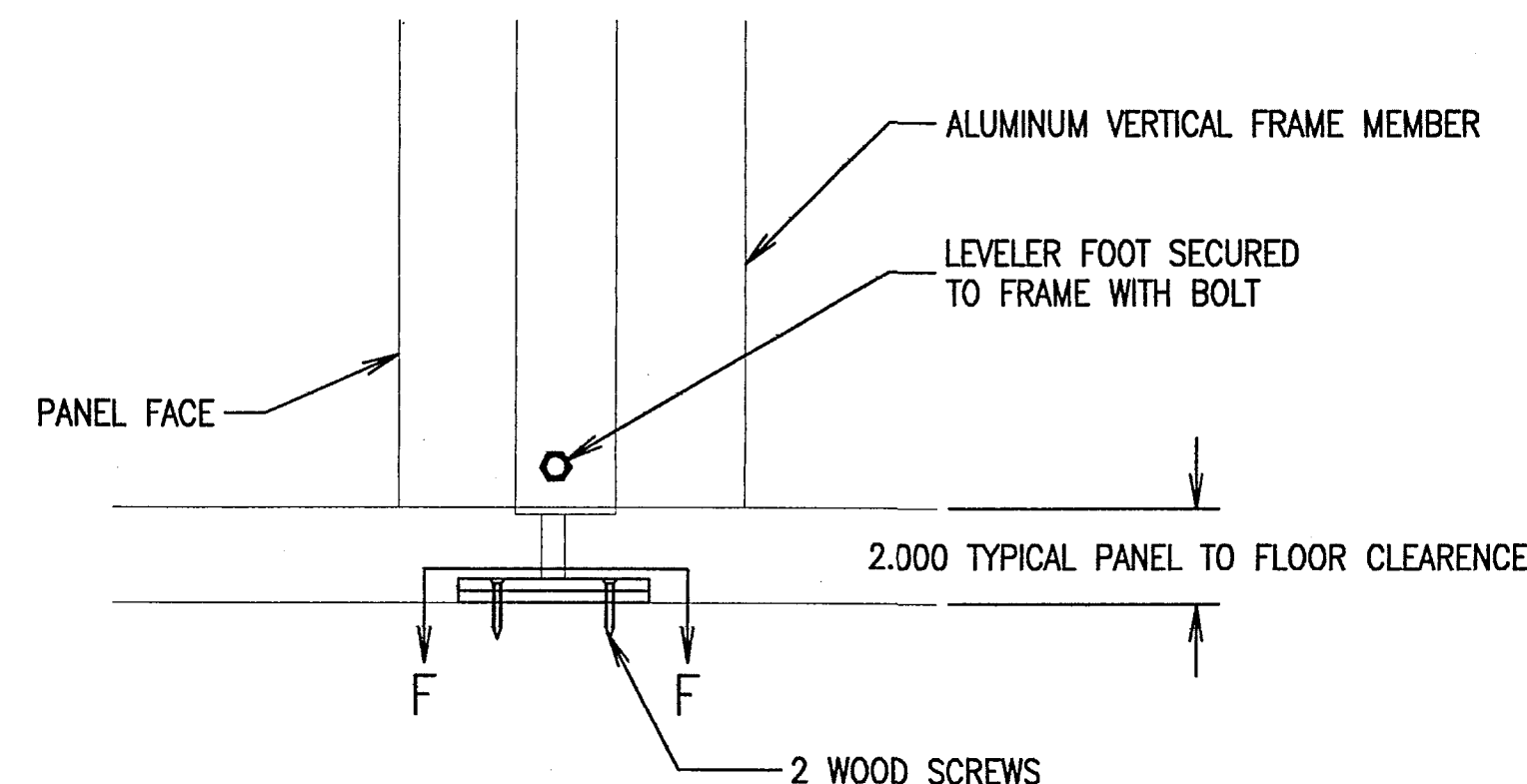
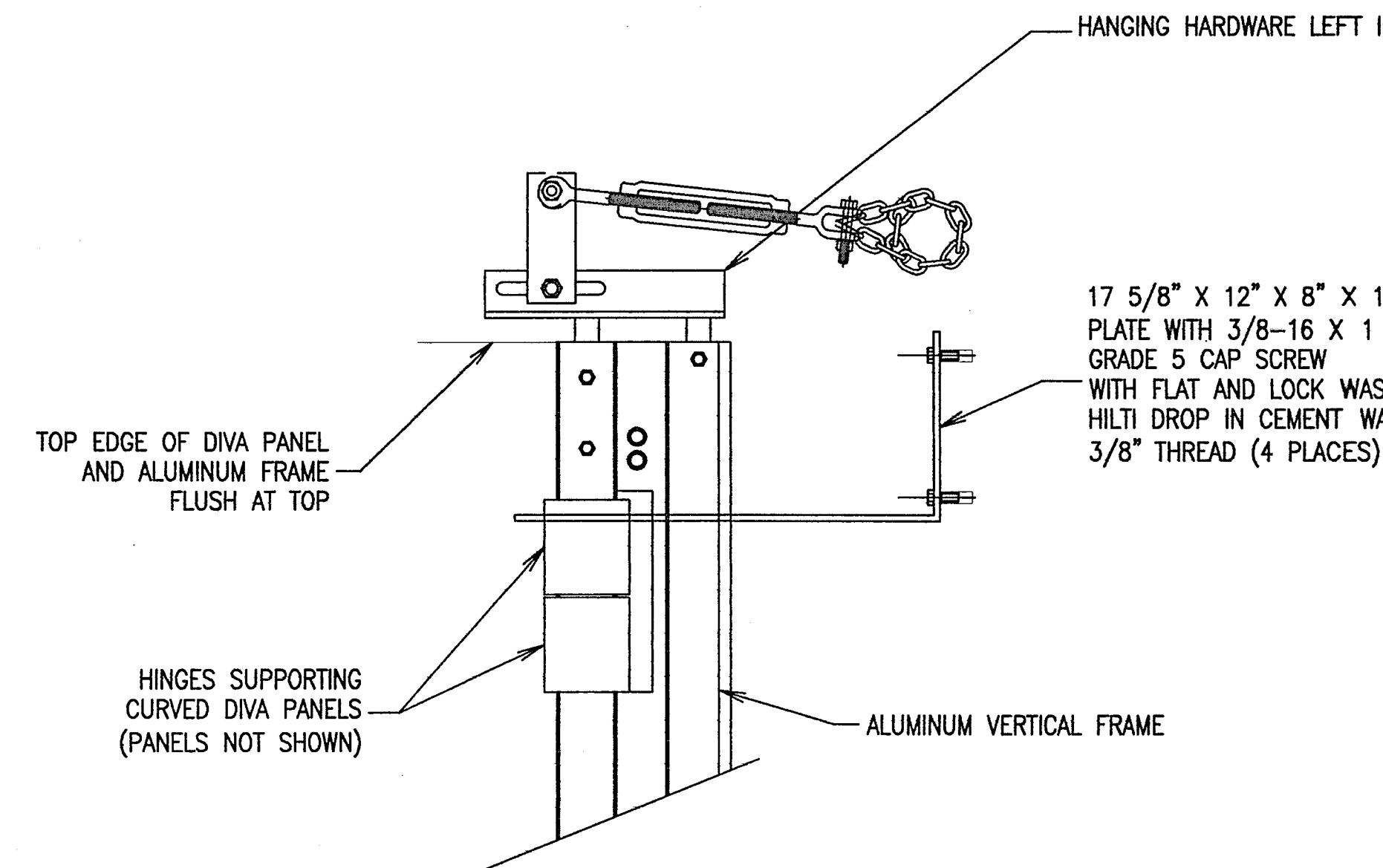


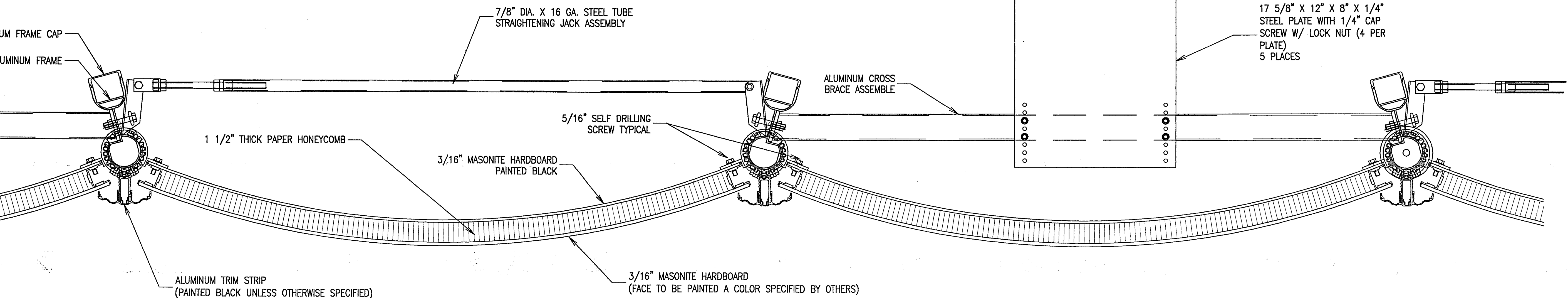
SECTION F-F TOP VIEW FLOOR PLATE
SCALE: 1"=1"
QTY: 11 FOR FLOWN BACK WALL



SECTION G-G (LH)
SCALE: 1/4"=1"



SECTION D--D
HANGER ASSEMBLY
SCALE: 1"=6"



SECTION B-B
SCALE: 1/4"=1"

NOTE: ALL HANGING HARDWARE TO REMAIN AND USED AT A LATER DATE.

PREPARED FOR:

CHESTERTON HIGH SCHOOL
CHESTERTON, INDIANA

TITLE:

FLOWN REAR WALL DETAILS

SIMILAR TO:

DATE: 03-08-02

DRAWN BY: S.PITTMAN

CHECKED BY: M.I.

This drawing and specification contains information Proprietary. Any reproduction, disclosure, or use thereof is expressly prohibited without the written permission of Wenger Corporation.

SCALE:

AS NOTED

Wenger

OWATONNA, MN - TELEPHONE: 507-451-4511

DWG. NO.

SHEET 3

A-1363-3D