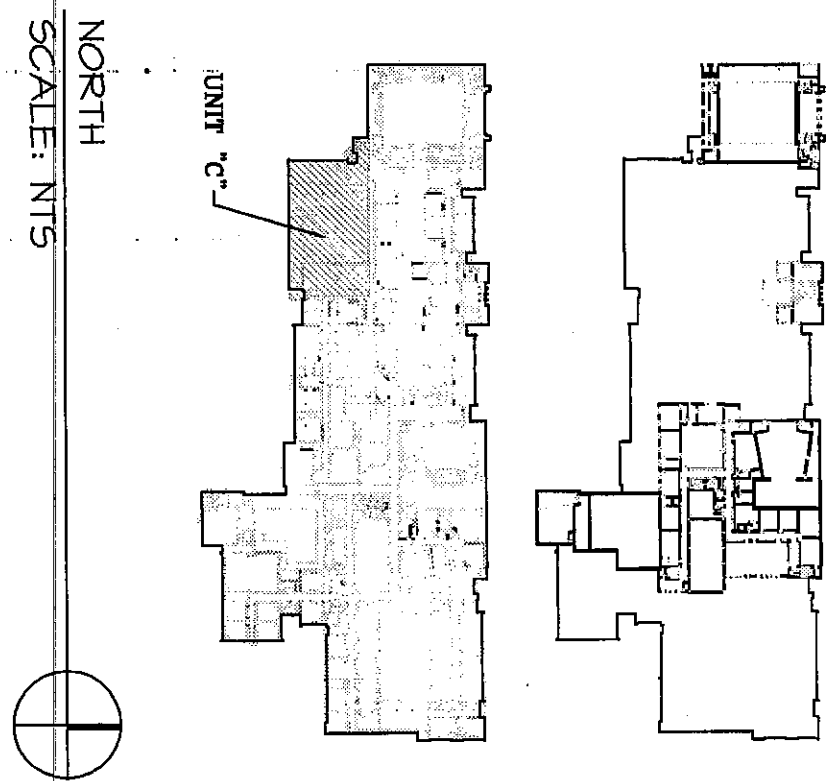


- GENERAL NOTES:
1. DIVISION 16 CONTRACTOR RESPONSIBLE FOR
 2. CABLE TRAY PROVIDED BY DIVISION 16 CONTRACTOR.
 3. SHOWN IN DRAWINGS FOR REFERENCE ONLY.

- REFERENCED NOTES:
1. SEE TS-5.10.1 TYPICAL FOR ALL CLASSROOMS. PROVIDE (1) 27" MULTI-HEAD MONITOR & (1) 5-MIN VCR IN MONITOR RACKS (PLATE PORTS) IN HALLWAYS PROVIDED BY DIVISION 16 CONTRACTOR. TYPICAL AS INDICATED.
 2. SEE TS-5.10.1. PROVIDE 35' MONITOR/RACKETS AND SEE TS-5.10.1 FOR ADDITIONAL INFORMATION.
 3. PROVIDE EQUIPMENT NUMBER OF CAT 6 CABLES AND CABLE TO PROVIDE SAME SERVICE AS PROJECT'S. PROVIDE 30'-0" CAT 6 CABLE CABLED NEATLY ABOVE CEILING FOR FUTURE USE. TERMINATE OTHER END AT 48"/10' AND LABEL CABLE.
 4. PROVIDE 27" MONITOR/RACKETS ONLY. NO VCR. PROVIDE ONE (1) T-COMBINER IN PLATE FOR LOCAL INPUT ONLY. NO MONITOR. ROUTE CABLE TO AV EQUIPMENT RACK.
 5. PROVIDE 27" MONITOR/RACKETS ONLY. NO VCR. PROVIDE ONE (1) T-COMBINER IN PLATE FOR LOCAL INPUT ONLY. NO MONITOR. ROUTE CABLE TO AV EQUIPMENT RACK.
 6. PROVIDE 27" MONITOR/RACKETS ONLY. NO VCR. PROVIDE ONE (1) T-COMBINER IN PLATE FOR LOCAL INPUT ONLY. NO MONITOR. ROUTE CABLE TO AV EQUIPMENT RACK.
 7. PROVIDE 27" MONITOR/RACKETS ONLY. NO VCR. PROVIDE ONE (1) T-COMBINER IN PLATE FOR LOCAL INPUT ONLY. NO MONITOR. ROUTE CABLE TO AV EQUIPMENT RACK.
 8. PROVIDE 27" MONITOR/RACKETS ONLY. NO VCR. PROVIDE ONE (1) T-COMBINER IN PLATE FOR LOCAL INPUT ONLY. NO MONITOR. ROUTE CABLE TO AV EQUIPMENT RACK.
 9. PROVIDE 27" MONITOR/RACKETS ONLY. NO VCR. PROVIDE ONE (1) T-COMBINER IN PLATE FOR LOCAL INPUT ONLY. NO MONITOR. ROUTE CABLE TO AV EQUIPMENT RACK.
 10. PROVIDE 27" MONITOR/RACKETS ONLY. NO VCR. PROVIDE ONE (1) T-COMBINER IN PLATE FOR LOCAL INPUT ONLY. NO MONITOR. ROUTE CABLE TO AV EQUIPMENT RACK.
 11. PROVIDE 27" MONITOR/RACKETS ONLY. NO VCR. PROVIDE ONE (1) T-COMBINER IN PLATE FOR LOCAL INPUT ONLY. NO MONITOR. ROUTE CABLE TO AV EQUIPMENT RACK.
 12. PROVIDE 27" MONITOR/RACKETS ONLY. NO VCR. PROVIDE ONE (1) T-COMBINER IN PLATE FOR LOCAL INPUT ONLY. NO MONITOR. ROUTE CABLE TO AV EQUIPMENT RACK.
 13. PROVIDE 27" MONITOR/RACKETS ONLY. NO VCR. PROVIDE ONE (1) T-COMBINER IN PLATE FOR LOCAL INPUT ONLY. NO MONITOR. ROUTE CABLE TO AV EQUIPMENT RACK.
 14. PROVIDE 27" MONITOR/RACKETS ONLY. NO VCR. PROVIDE ONE (1) T-COMBINER IN PLATE FOR LOCAL INPUT ONLY. NO MONITOR. ROUTE CABLE TO AV EQUIPMENT RACK.
 15. PROVIDE 27" MONITOR/RACKETS ONLY. NO VCR. PROVIDE ONE (1) T-COMBINER IN PLATE FOR LOCAL INPUT ONLY. NO MONITOR. ROUTE CABLE TO AV EQUIPMENT RACK.
 16. PROVIDE 27" MONITOR/RACKETS ONLY. NO VCR. PROVIDE ONE (1) T-COMBINER IN PLATE FOR LOCAL INPUT ONLY. NO MONITOR. ROUTE CABLE TO AV EQUIPMENT RACK.
 17. PROVIDE 27" MONITOR/RACKETS ONLY. NO VCR. PROVIDE ONE (1) T-COMBINER IN PLATE FOR LOCAL INPUT ONLY. NO MONITOR. ROUTE CABLE TO AV EQUIPMENT RACK.
 18. PROVIDE 27" MONITOR/RACKETS ONLY. NO VCR. PROVIDE ONE (1) T-COMBINER IN PLATE FOR LOCAL INPUT ONLY. NO MONITOR. ROUTE CABLE TO AV EQUIPMENT RACK.
 19. PROVIDE 27" MONITOR/RACKETS ONLY. NO VCR. PROVIDE ONE (1) T-COMBINER IN PLATE FOR LOCAL INPUT ONLY. NO MONITOR. ROUTE CABLE TO AV EQUIPMENT RACK.
 20. PROVIDE 27" MONITOR/RACKETS ONLY. NO VCR. PROVIDE ONE (1) T-COMBINER IN PLATE FOR LOCAL INPUT ONLY. NO MONITOR. ROUTE CABLE TO AV EQUIPMENT RACK.
 21. PROVIDE 27" MONITOR/RACKETS ONLY. NO VCR. PROVIDE ONE (1) T-COMBINER IN PLATE FOR LOCAL INPUT ONLY. NO MONITOR. ROUTE CABLE TO AV EQUIPMENT RACK.

KEY PLAN:



NORTH
SCALE: NTS

D S & A INC.
Technology Design Consultants
14419 East 196th Street
Mukwonago, IL 44000-9530
764-534-5152
D S & A INCORPORATED

**VEAZEY
PARROTT
DURKIN
&
SHOULDERS**
ARCHITECTS
ENGINEERS
PLANNERS

RENOVATION PROJECT FOR:
**DUNELAND SCHOOL
CORPORATION**
CHESTERTON MIDDLE SCHOOL
CHESTERTON, INDIANA

Drawing Title:	1
Project No.:	TS 3.3
Project Date:	04-10-24
Drawn By:	TDES
Approved By:	LND
Drawing No.:	TS 3.3