

1 REFLECTED CEILING PLAN  
TS 3.2 SCALE: 1/8"=1'-0"

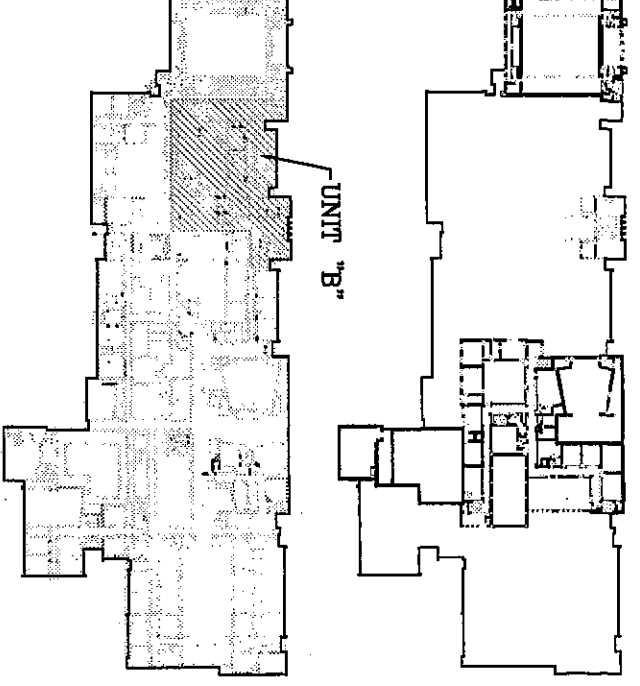
UNIT B

- GENERAL NOTES:
1. DIVISION 16 CONTRACTOR RESPONSIBLE FOR ALL WORK SHOWN ON THIS DRAWING.
  2. CABLE TRAY PROVIDED BY DIVISION 16 CONTRACTOR.
  3. SHOWN IN DRAWINGS FOR REFERENCE ONLY.

REFERENCED NOTES:

1. SEE TS-5-100, TYPICAL FOR ALL CLASSROOMS. PROVIDE (1) 27" MULTI-MEDIA MONITOR & (1) 5-MPH VHS IN MOUNTAIN TRUCKS (PATE PAPER) IN BACKWAY PROVIDED BY DIVISION 16 CONTRACTOR. TYPICAL AS INDICATED.
2. SEE TS-5-103, PROVIDE 35" MONITOR/BROADCAST AND 35" MONITOR/BROADCAST. TYPICAL AS INDICATED.
3. SEE TS-5-103, PROVIDE 35" MONITOR/BROADCAST AND 35" MONITOR/BROADCAST. TYPICAL AS INDICATED.
4. PROVIDE EQUIPMENT NUMBER OF CAT 6 CABLES AND CABLE TRAY. PROVIDE SAME SERVICE AS PROVIDED IN OTHER DIRECTLY ADJACENT ROOMS (SPEAKERS, MONITORS, CABLE TRAY, ETC.). PROVIDE 30'-0" OF DATA CABLE COILED NEATLY ABOVE CEILING FOR FUTURE USE. TERMINATE OTHER END AT M/F OR F/M AND LABEL CABLE.
5. PROVIDE 27" MONITOR/BROADCAST ONLY. NO VCR. NO VCR. 700P SIGNALS FROM REMOTE MONITOR.
6. PROVIDE ONE (1) 7' CONNECTOR IN PLATE FOR LOCAL INPUT ONLY. NO MONITOR. NO VCR. MOUNT AT 15' H/F.
7. PROVIDE ONE (1) 7' CONNECTOR IN PLATE FOR LOCAL INPUT ONLY. NO MONITOR. NO VCR. MOUNT AT 15' H/F.
8. PROVIDE ONE (1) 7' CONNECTOR IN PLATE FOR LOCAL INPUT ONLY. NO MONITOR. NO VCR. MOUNT AT 15' H/F.
9. PROVIDE ONE (1) 7' CONNECTOR IN PLATE FOR LOCAL INPUT ONLY. NO MONITOR. NO VCR. MOUNT AT 15' H/F.
10. PROVIDE ONE (1) 7' CONNECTOR IN PLATE FOR LOCAL INPUT ONLY. NO MONITOR. NO VCR. MOUNT AT 15' H/F.
11. PROVIDE ONE (1) 7' CONNECTOR IN PLATE FOR LOCAL INPUT ONLY. NO MONITOR. NO VCR. MOUNT AT 15' H/F.
12. PROVIDE ONE (1) 7' CONNECTOR IN PLATE FOR LOCAL INPUT ONLY. NO MONITOR. NO VCR. MOUNT AT 15' H/F.
13. PROVIDE ONE (1) 7' CONNECTOR IN PLATE FOR LOCAL INPUT ONLY. NO MONITOR. NO VCR. MOUNT AT 15' H/F.
14. PROVIDE ONE (1) 7' CONNECTOR IN PLATE FOR LOCAL INPUT ONLY. NO MONITOR. NO VCR. MOUNT AT 15' H/F.
15. PROVIDE ONE (1) 7' CONNECTOR IN PLATE FOR LOCAL INPUT ONLY. NO MONITOR. NO VCR. MOUNT AT 15' H/F.
16. PROVIDE ONE (1) 7' CONNECTOR IN PLATE FOR LOCAL INPUT ONLY. NO MONITOR. NO VCR. MOUNT AT 15' H/F.
17. PROVIDE ONE (1) 7' CONNECTOR IN PLATE FOR LOCAL INPUT ONLY. NO MONITOR. NO VCR. MOUNT AT 15' H/F.
18. PROVIDE ONE (1) 7' CONNECTOR IN PLATE FOR LOCAL INPUT ONLY. NO MONITOR. NO VCR. MOUNT AT 15' H/F.
19. PROVIDE ONE (1) 7' CONNECTOR IN PLATE FOR LOCAL INPUT ONLY. NO MONITOR. NO VCR. MOUNT AT 15' H/F.
20. PROVIDE ONE (1) 7' CONNECTOR IN PLATE FOR LOCAL INPUT ONLY. NO MONITOR. NO VCR. MOUNT AT 15' H/F.
21. PROVIDE ONE (1) 7' CONNECTOR IN PLATE FOR LOCAL INPUT ONLY. NO MONITOR. NO VCR. MOUNT AT 15' H/F.

KEY PLAN:



NORTH  
SCALE: NTS

**D S & A** INC.  
Technology Design Consultants  
144 E. East 196th Street  
Indianapolis IN 46204-9930  
764/534-5152  
D S & A INCORPORATED

**VEAZEY**  
**PARROTT**  
**DURKIN &**  
**SHOULDERS**  
ARCHITECTS  
ENGINEERS  
PLANNERS

RENOVATION PROJECT FOR:  
**DUNELAND SCHOOL**  
**CORPORATION**  
CHESTERTON MIDDLE SCHOOL  
CHESTERTON, INDIANA

Drawing Title:  
**TECHNOLOGY SYSTEMS REFLECTED**  
**CEILING PLAN (UNIT B)**  
Project No.: 94-10294  
Project Date: 6-14-2000  
Drawn By: TDES  
Approved By: LMD  
Drawing No.: TS 3.2