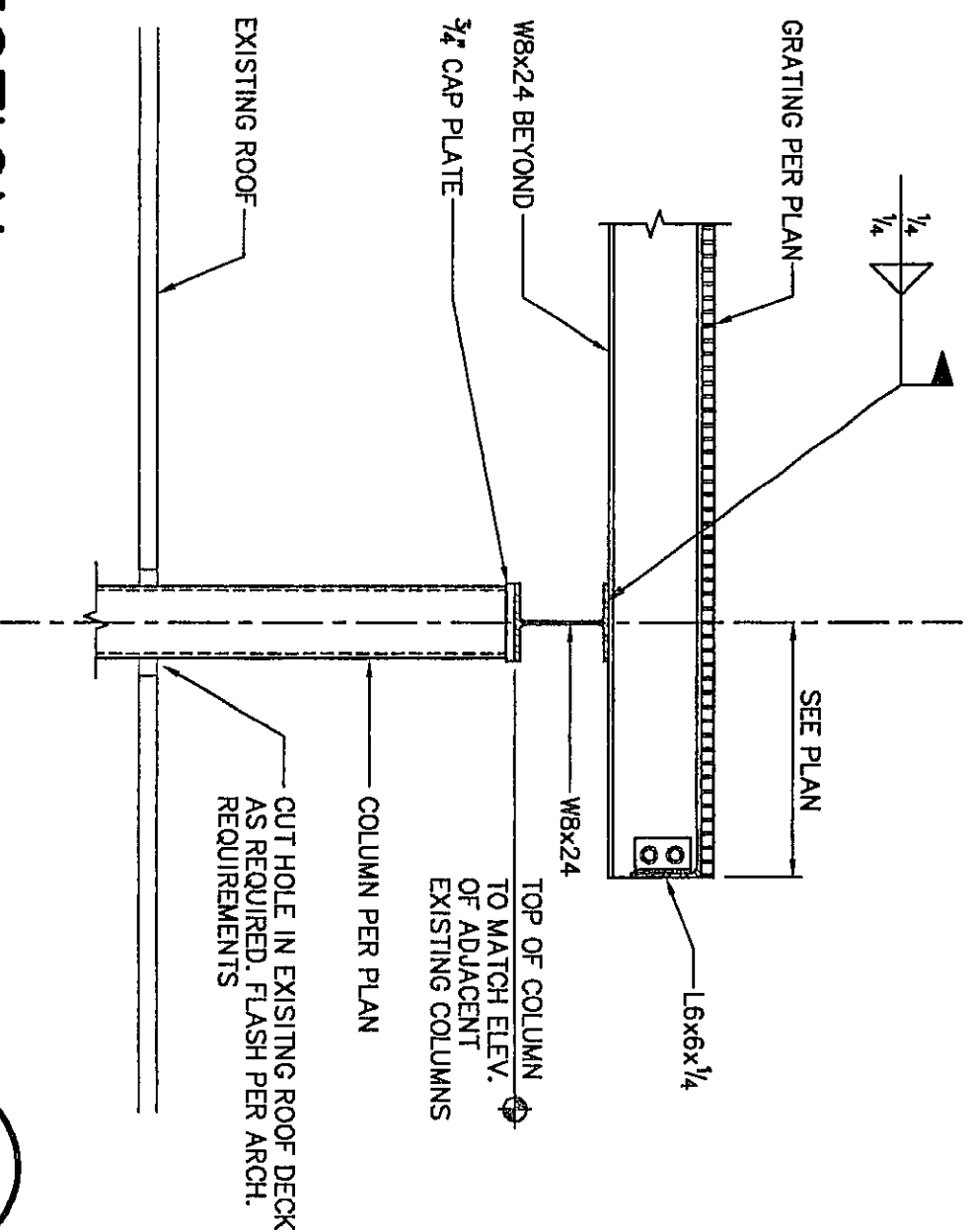
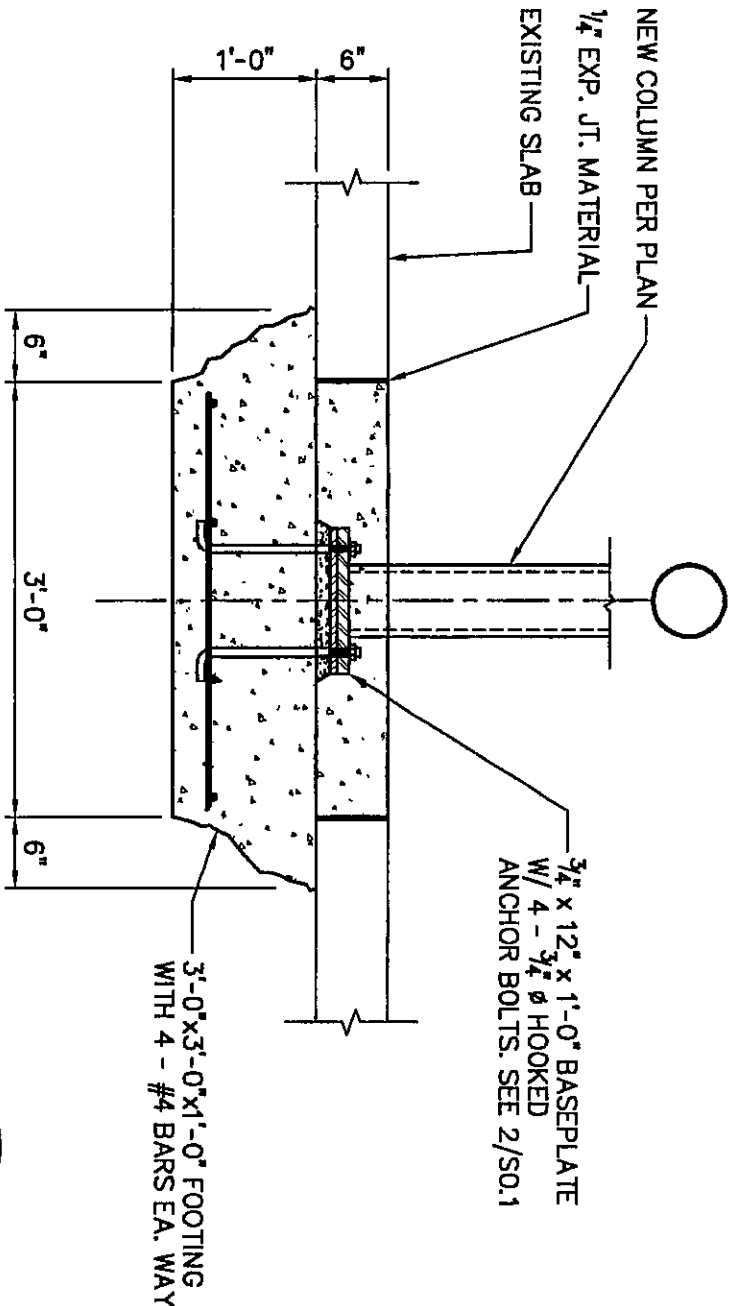


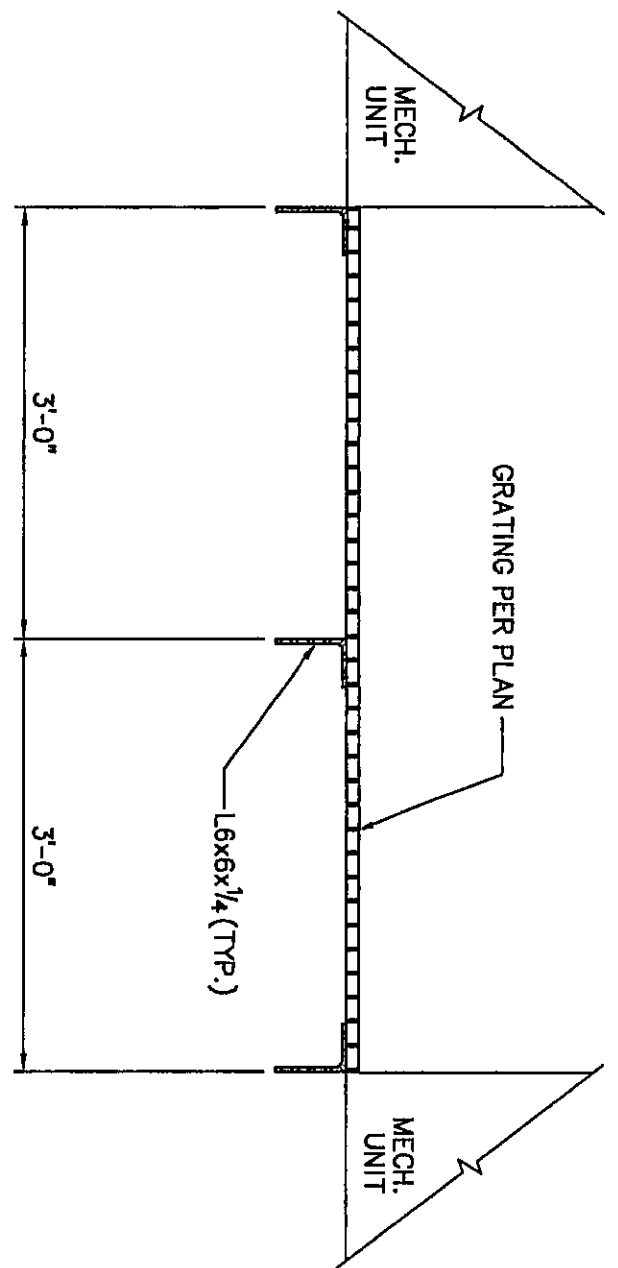
SECTION 1
SCALE: 3/4" = 1'-0"



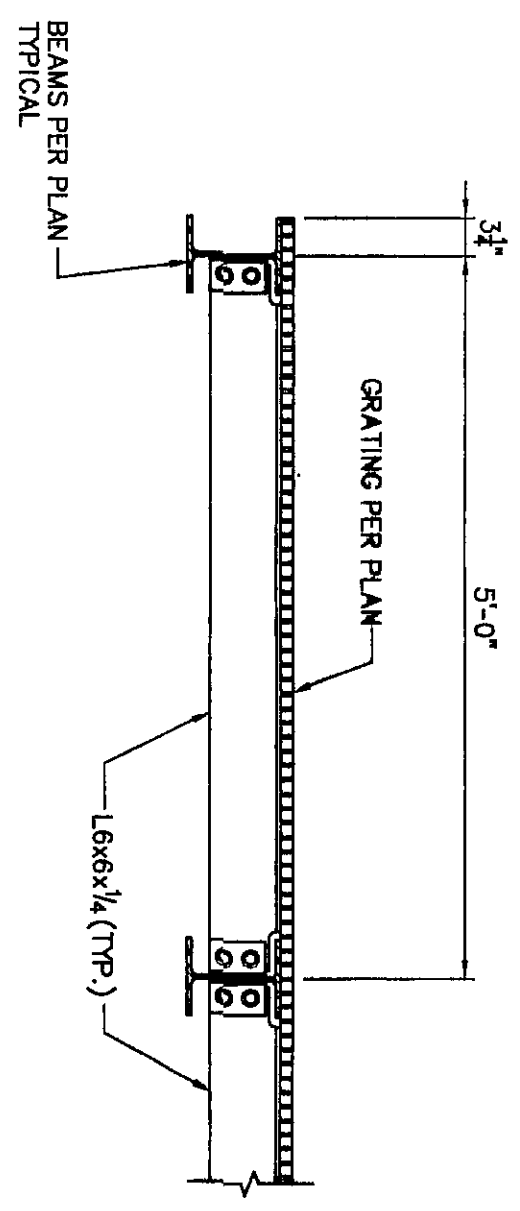
SECTION 2
SCALE: 3/4" = 1'-0"



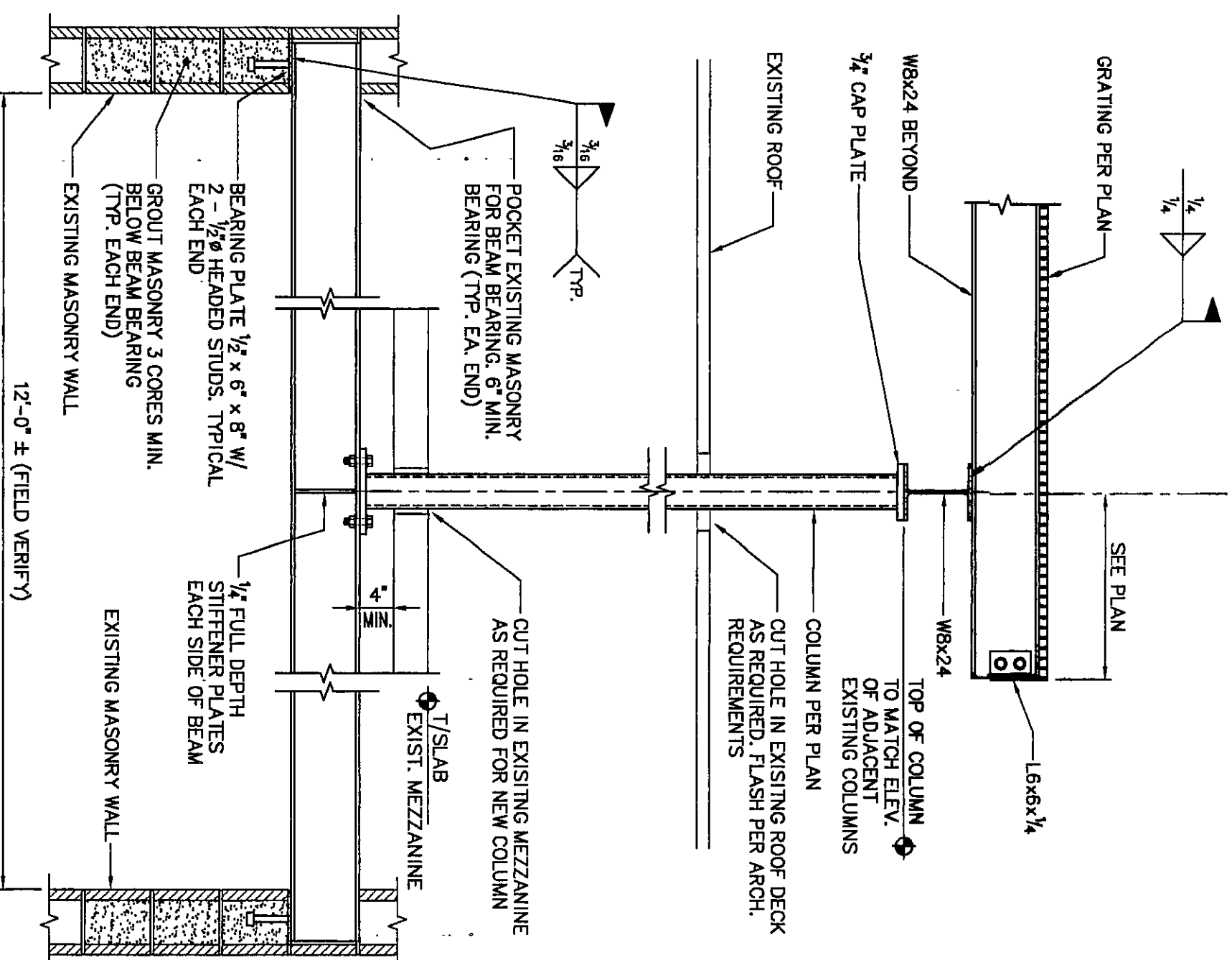
SECTION 3
SCALE: 3/4" = 1'-0"



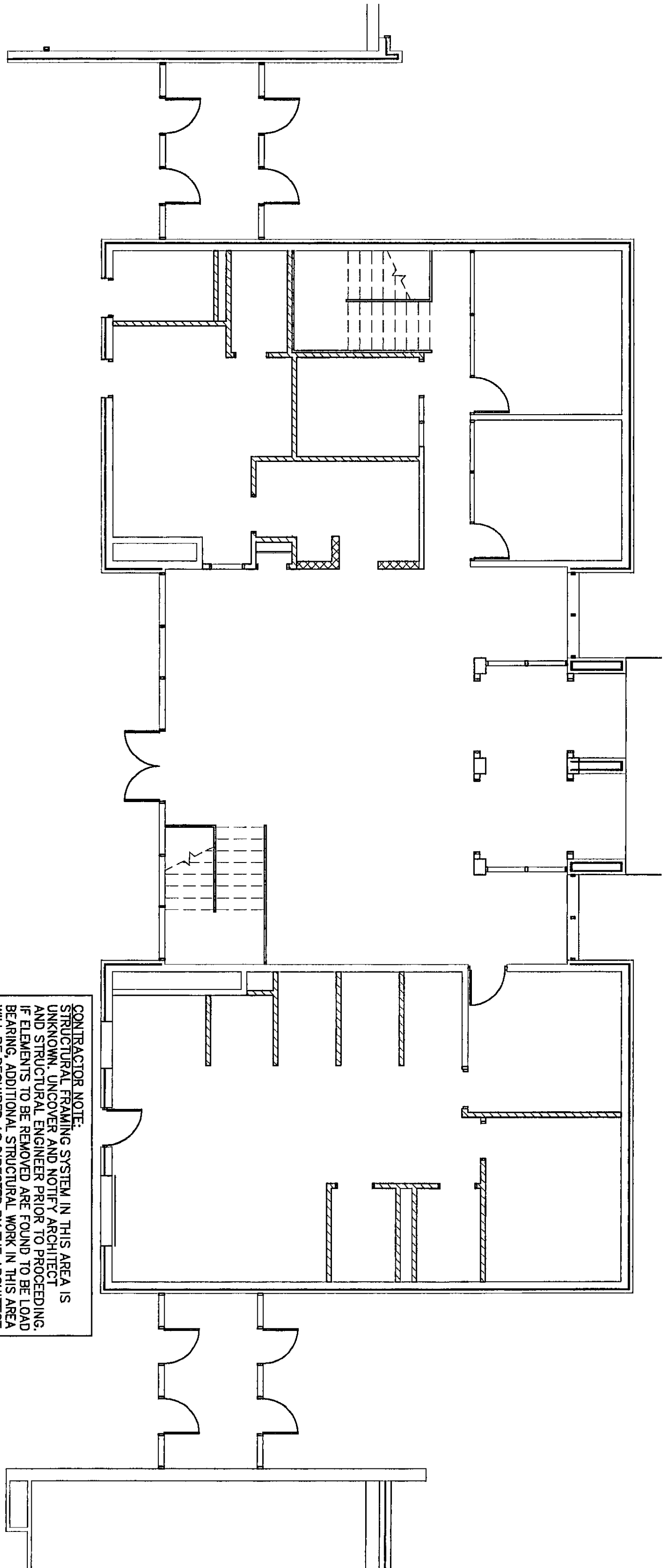
SECTION 4
SCALE: 3/4" = 1'-0"



SECTION 5
SCALE: 3/4" = 1'-0"

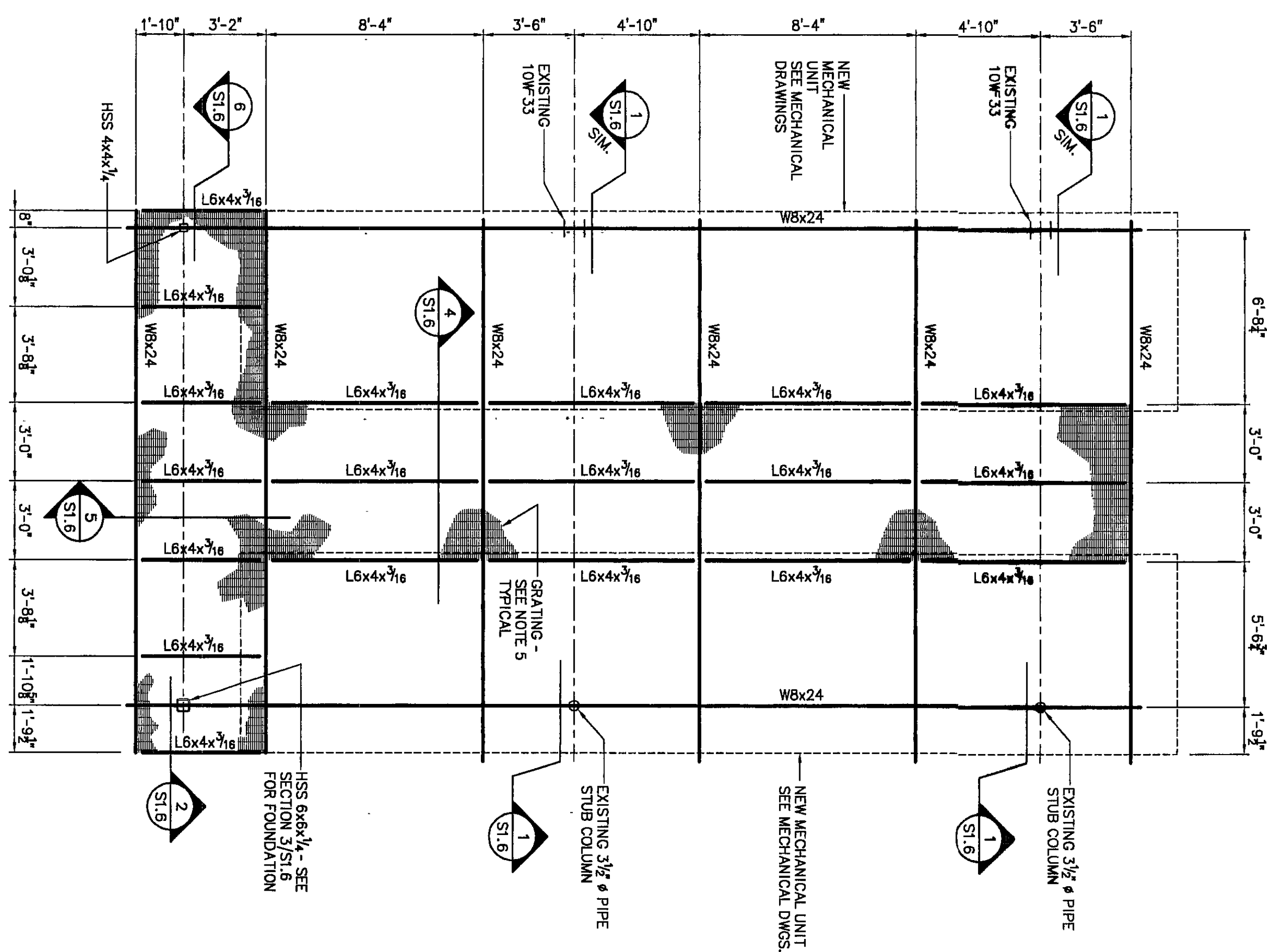


SECTION 6
SCALE: 3/4" = 1'-0"



NORTH ENTRY FRAMING PLAN
SCALE: 1/8" = 1'-0"

- NOTES:
- REFERENCE ELEVATION = TOP OF EXISTING FLOOR SLAB = 0'-0".



REMOTE CONDENSER SUPPORT FRAMING PLAN
SCALE: 1/8" = 1'-0"

- NOTES:
- REMOVE EXISTING COOLING TOWER FRAMING AS REQUIRED FOR INSTALLATION OF NEW FRAMING.
 - COORDINATE/VERIFY EXACT LOCATION OF BEAMS WITH MECHANICAL CONTRACTOR.
 - CONNECTION OF MECHANICAL EQUIPMENT TO STEEL FRAMING SHALL BE PER MANUFACTURER'S RECOMMENDATIONS.
 - NEW COLUMNS SHALL BE BRACED TO EXISTING JOISTS AT ROOF LEVEL WITH L6x4x1/8 WELD TO FACE OF COLUMN AND TO TOP CHORDS OF JOISTS.
 - STANDARD 21 BAR TYPE 1 x 1/8 GRATING W/ CROSS BARS @ 2' OC AND BEARING BARS @ 1/4" OC.
 - FASTEN GRATING WITH MECHANICAL FASTENERS PER MANUFACTURER'S RECOMMENDATIONS.
 - ALL EXPOSED SUPPORT FRAMING AND STEEL GRATING TO BE HOT-DIP GALVANIZED.

**RENOVATION PROJECT FOR:
DUNEAND SCHOOL
CORPORATION
CHESTERTON MIDDLE SCHOOL
CHESTERTON, INDIANA**

**NORTH ENTRY AND
REMOTE CONDENSER SUPPORT
STRUCTURAL PLANS**

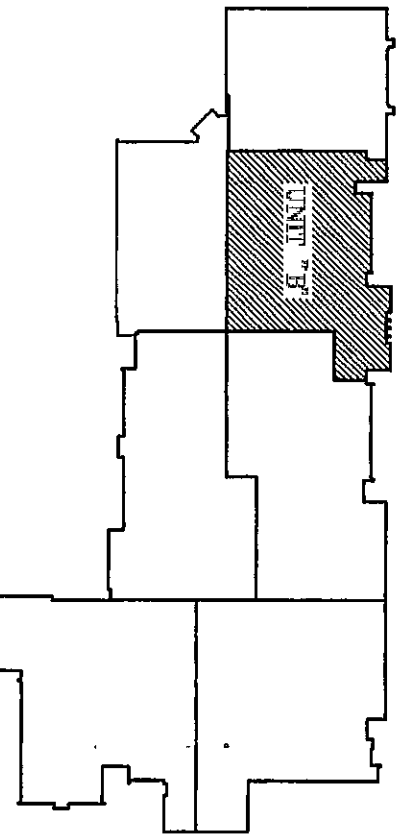
Project No: 9980.00
Project Date: 6/12/2000
Drawn By: RRC
Approved By: DCC
Drawing No: S1.6

**VEAZEY
PARKITT
&
SHOULDERS**

ARCHITECTS
ENGINEERS
PLANNERS

AMERICAN CONSULTING, INC.
Architect
485 MILLERSVILLE ROAD
INDIANAPOLIS, IN 46205-2998
(317) 575-5880 FAX: (317) 54-0270

KEY PLAN



2000-5-10