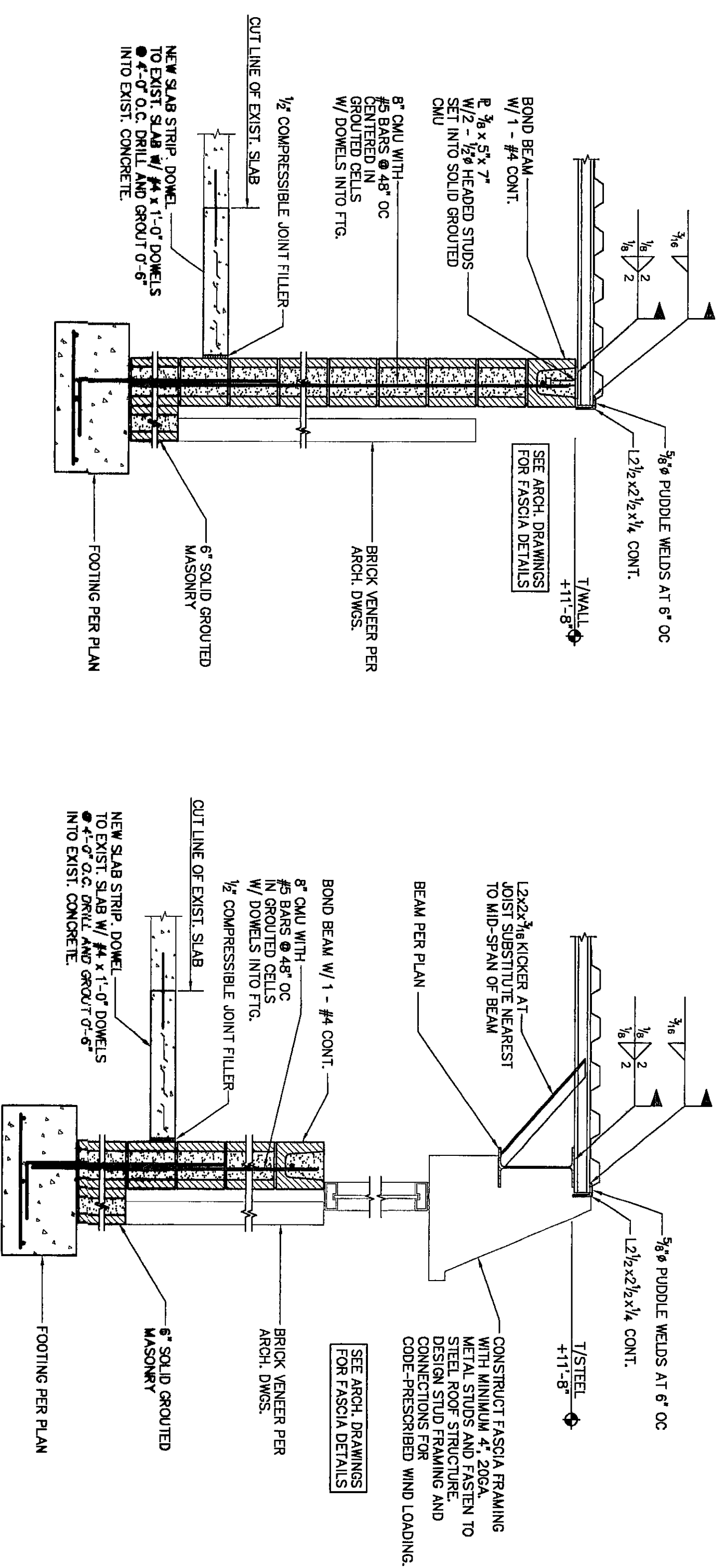


SECTION

SCALE: 3/4" = 1'-0"

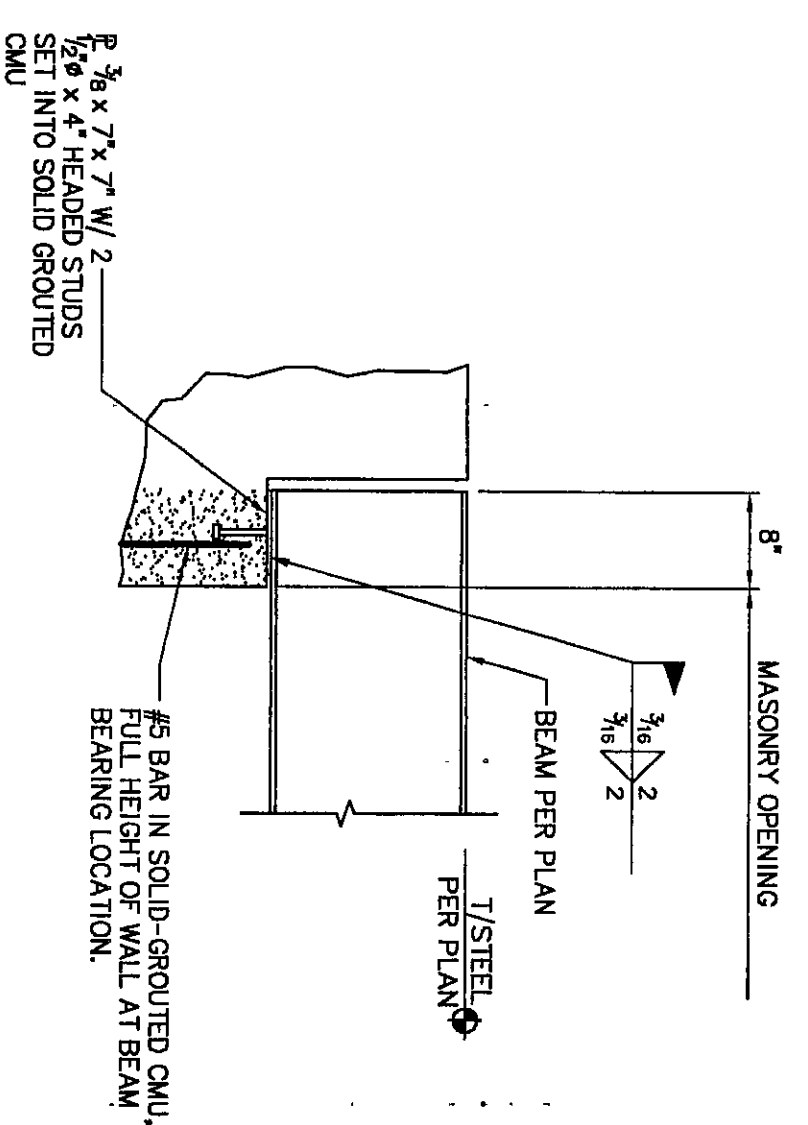
1
S1.2



SECTION

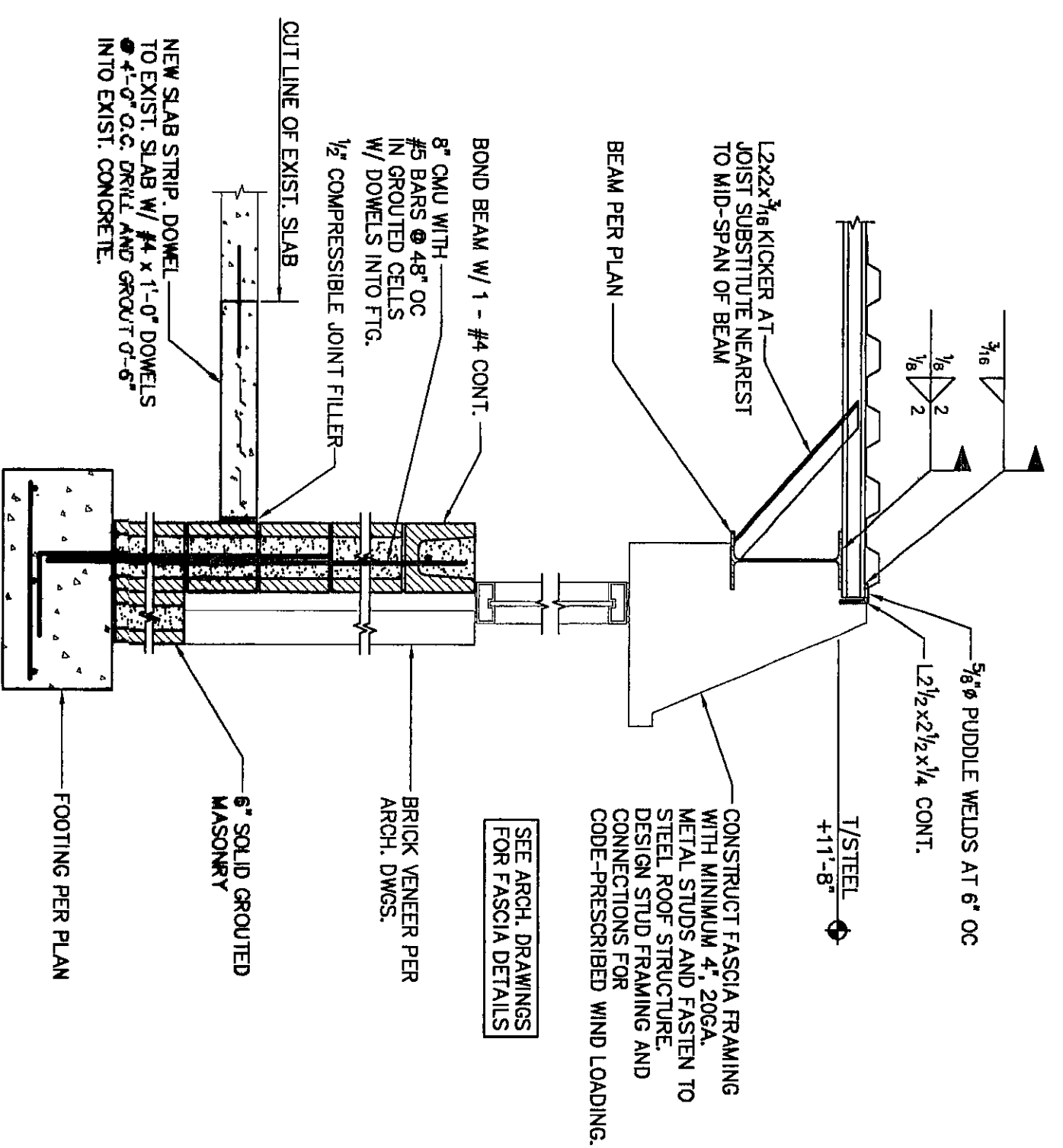
SCALE: 3/4" = 1'-0"

3
S1.2



DETAIL

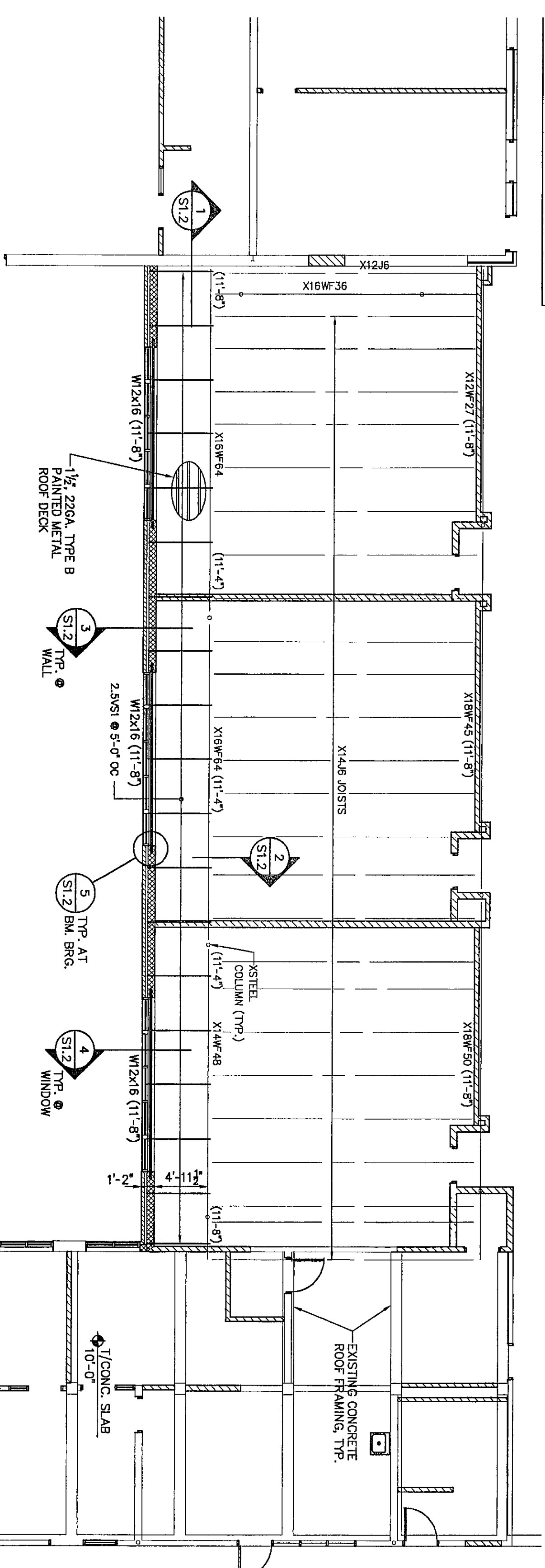
SCALE: 3/4" = 1'-0"

$$\frac{5}{S1.2}$$


SECTION

SCALE: 3/4" = 1'-0"

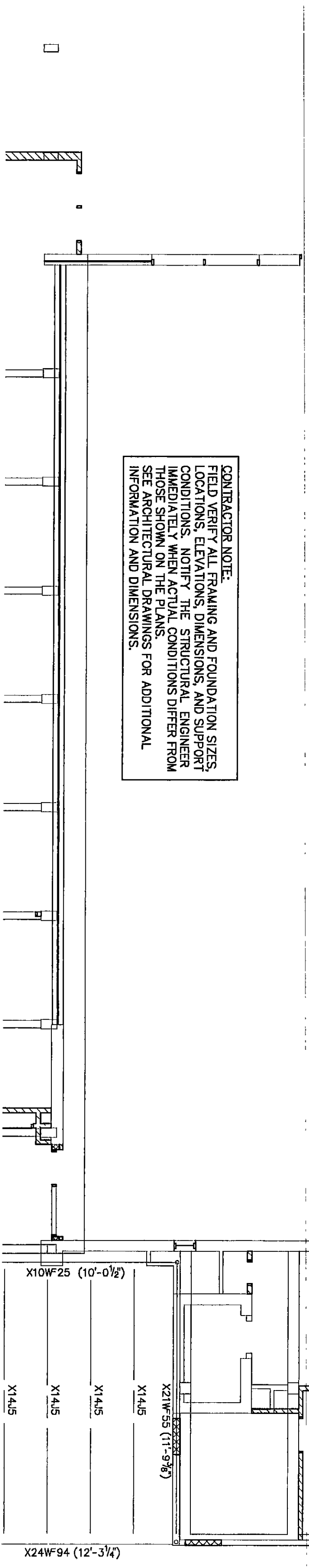
4
S1.2



SECTION

SCALE: 3/4" = 1'-0"

2
S1.2

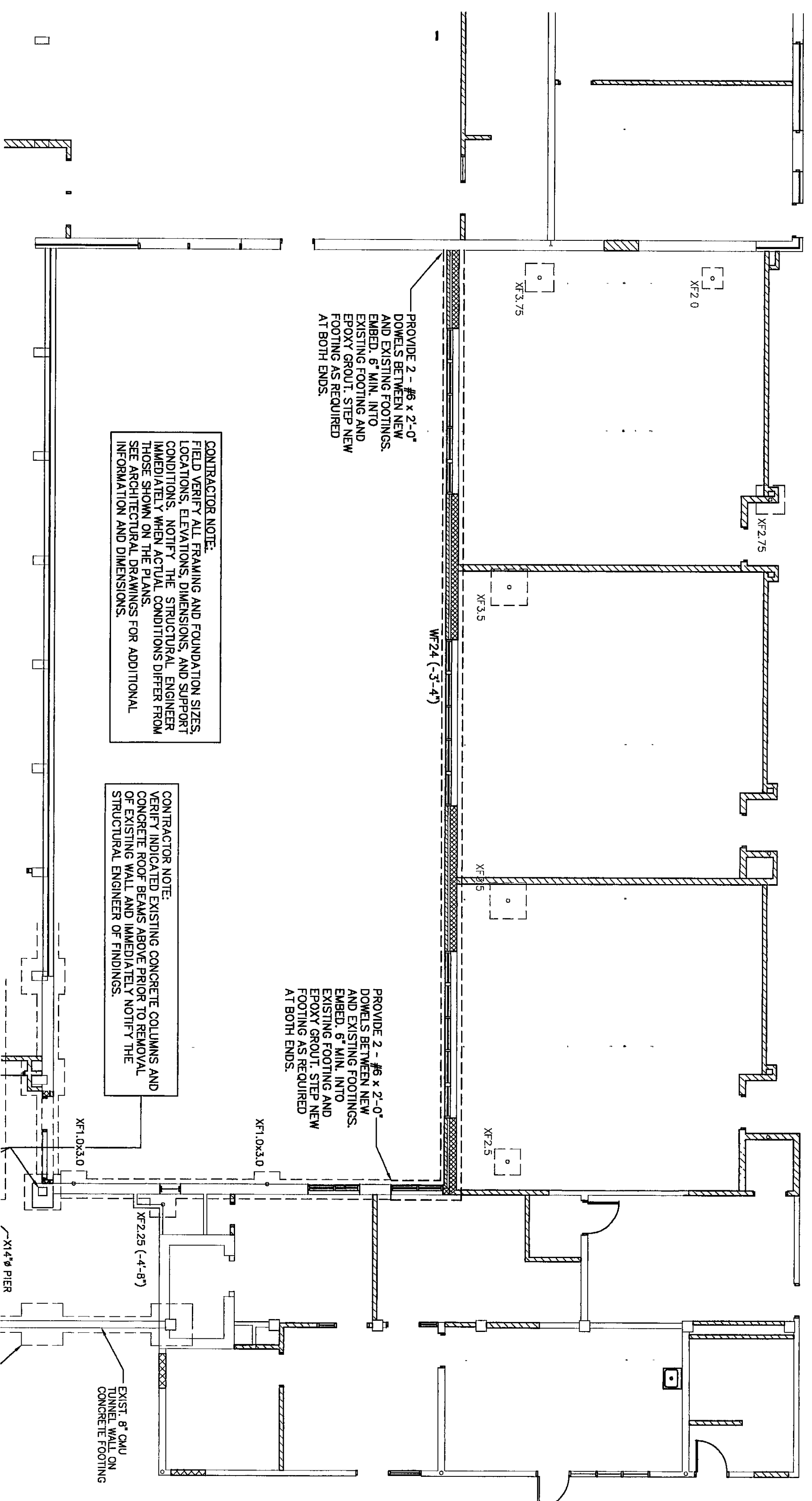


FRAMING PLAN

SCALE: 1/8" = 1'-0"

NOTES:

1. "X" PRECEDING FOUNDATION DESIGNATION INDICATES "EXISTING" FOUNDATION.
2. REFERENCE ELEVATION = TOP OF EXISTING FLOOR SLAB = 0'-0".

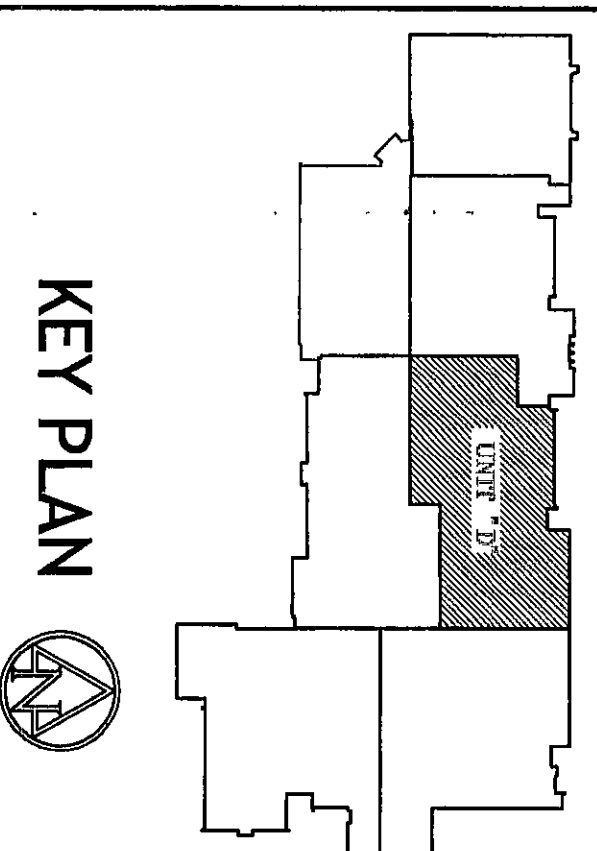


FOUNDATION PLAN

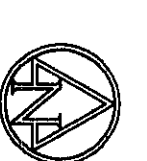
SCALE: 1/8" = 1'-0"

NOTES:

1. "X" PRECEDING FOUNDATION DESIGNATION INDICATES "EXISTING" FOUNDATION.
2. REFERENCE ELEVATION = TOP OF EXISTING FLOOR SLAB = 0'-0".



KEY PLAN



AMERICAN CONSULTING, INC.

Architects 465 MILLERSVILLE ROAD
Consultants INDIANAPOLIS, IN 46205-2996
Engineers (317) 547-5580 FAX: (317) 543-0270

Copyright (c) 1999-2000 by American Consulting, Inc.
American Consulting, Inc. Project Number IN2000.0200

ARCHITECTS
ENGINEERS
PLANNERS

**VEAZEY
PARROT
DURKIN &
SHOULDERS**

RENOVATION PROJECT FOR:
DUNELAND SCHOOL
CORPORATION
CHESTERTON MIDDLE SCHOOL
CHESTERTON, INDIANA

UNIT D COURTYARD FOUNDATION AND FRAMING PLANS

Project No:

Project Date: 9900.00

6/12/2000

900414

Drawing No. DGC

217

CIN