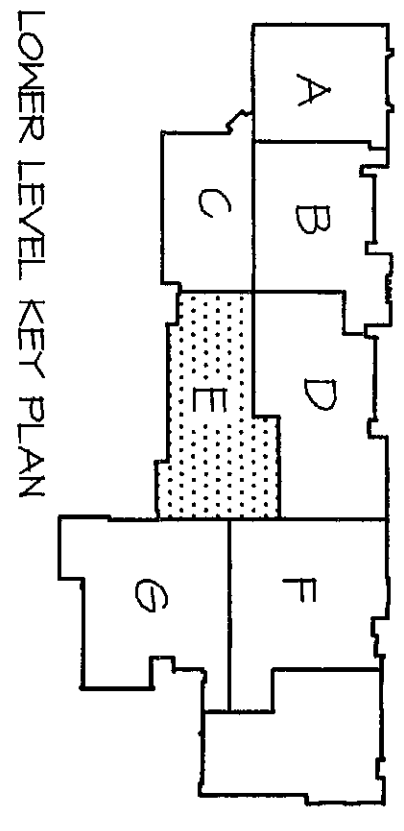
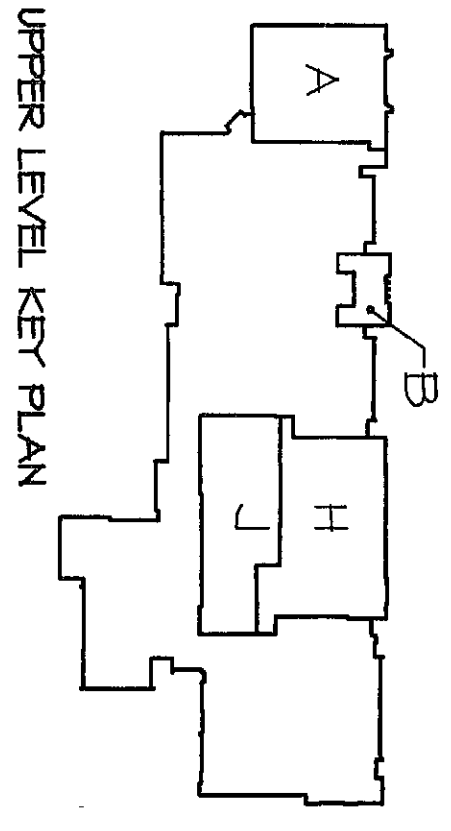


GENERAL NOTES:

1. ALL PIPING BRANCHES TO SECOND FLOOR LABS MAY NOT BE INSTALLED UNTIL SECOND FLOOR LABS ARE COMPLETED. BRANCHES TO THESE LABS SHALL BE INSTALLED AND CONNECTED TO THESE BRANCHES IF THEY ARE EQUIPMENT THAT IS TO REMAIN ACTIVE. INSTALL BALL VALVES ON ALL BRANCHES.
2. PATCH HOLES THROUGH FLOOR AFTER PIPING REMOVAL WITH GROUT. (TYPICAL THROUGH 017)

REFERENCE NOTES:

1. REMOVE AND REPLACE LABORATORY FURNITURE WITH NEW AS FOLLOWS:
 - A. COMBINATION GAS AND WATER FAUCET EQUAL TO T15 BRASS MODEL BL-6005-2.
 - B. SINGLE CH FAUCET WITH VACUUM BREAKER EQUAL TO T15 BRASS MODEL BL-5109-B.
 - C. SINGLE IN FAUCET WITH VACUUM BREAKER EQUAL TO T15 BRASS MODEL BL-5109-B.
2. 3/4" CH DROP IN WALL, RUN IN CASEWORK UTILITY SPACE TO LAB SINKS. (1/2" SINK CONNECTIONS)
3. 1/2" CH DROP SIMILAR TO NOTE 2.
4. REMOVE EXISTING 2" GATE VALVE AND REPLACE WITH NEW BALL VALVE.
5. EXISTING 4" SANITARY DRAIN BELOW FLOOR.
6. DROP 1/2" CH AND 1/2" IN BELOW SLAB (NO JOINTS TO RESTRICTOR'S TABLE INSTALL BALL VALVES ON BRANCHES ABOVE CEILING).
7. CONNECT TO EXIST. 4" SANITARY DRAIN AT CLEANOUT.
8. RAISE CLEANOUT TOP TO NEW FLOOR LEVEL.
9. FLOOR NEW TOP, RECESSED FOR VENT, TILE FLOOR.
10. CONNECT TO EXIST. WASTE SOLUTION, RE-WORK ROUGH-IN IF REQUIRED FOR NEW FIXTURES.
11. 1/2" TN AND CH DROP TO GRY GRAY BOX MODEL MED200. LOCATE BOTTOM OF BOX AT 42" AFF. INSTALL A 200 SIZE 100 SHOCKTOL. ON HOT AND COLD WATER PIPING.
12. REMOVE EXIST. WASTE AND VENT PIPING FOR NEW FIXTURES. ALL PIPING SHALL BE CONCEALED IN NEW TURNED-OUT SPACE.
13. CONNECT TO EXIST. 2 1/2" TN 1/2" CH AND 1" VENT ABOVE CEILING.
14. 2" VENT, RISE UP IN CHASE AND CONNECT TO EXIST. VTR ADV. C/D.
15. CONNECT 4" WASTE FROM PHYSICS TO NEW 4" ACID WASTE DRAIN.
16. REWIRE EXIST. 4" PLUMB. DRAIN TO NEW AS INDICATED, APPROX. DEPTH OF EXIST. DRAIN 4'-0".
17. CH DROP IN CHASE RUN 2" CH MANIFOLD FULL SHOCKTOL. BETWEEN THE LAST TWO FIXTURE CONNECTIONS.
18. 1/2" CH DROP IN CHASE AND 1/2" MANIFOLD SHOCKTOL. TO NOTE 18. INSTALL A 200 SIZE 200 SHOCKTOL. SIMILAR TO NOTE 18.
19. 1/2" LOOP VENT, RISE UP IN NEW WALL, WHERE INDICATED.
20. CONNECT NEW 2" WASTE FROM NEW URINALS TO EXIST. WASTE BELOW FLOOR.
21. CONNECT 3" WASTE FROM HOP BASIN TO EXIST. WASTE EXIST. COLLECTOR VTR VENT.
22. CH MANIFOLD RUN VENT.
23. 4" WASTE FROM VERTICAL CARRIERS, CONNECT TO EXIST. 4" DRAIN IN TUNNEL BELOW.



NORTH
SCALE: 1/8" = 1'-0"

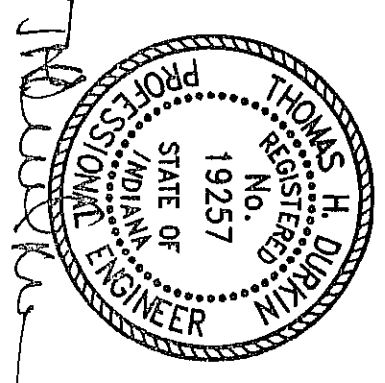
**VEAZEY
PARROTT
&
SHOULDERS**

ARCHITECTS
ENGINEERS
PLANNERS

RENOVATION PROJECT FOR:
**DUNELAND SCHOOL
CORPORATION**
CESTERION MEDICAL SCHOOL
CESTERION, INDIANA

PUMPING PLAN - UNIT E

| | |
|--------------|----------|
| Project No. | 4480000 |
| Project Date | 06-12-00 |
| Drawn By | RLM |
| Approved By | KLF |
| Drawing No. | P 1.5 |



2000-7-15