

MECHANICAL PLAN 2ND LEVEL UNIT B

SCALE: 1/8" = 1'-0"

1. REPLACE EXISTING CONTROLLER WITH NEW DDC CONTROLLER.
2. REPLACE EXISTING AIR AND ZONE DAMPER ACTUATORS.

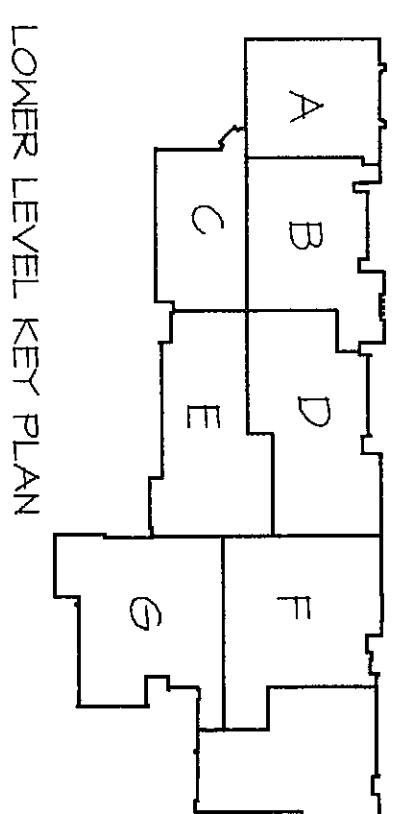
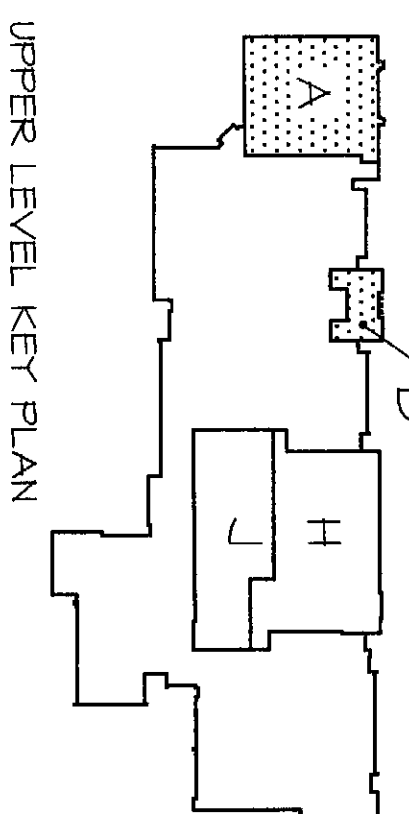
CONTROL WORK REQUIRED FOR AHUS, BS AND BA EXISTING VENTILATION UNITS.

MECHANICAL PLAN 2ND LEVEL UNIT B

SCALE: 1/8" = 1'-0"

GENERAL MECHANICAL NOTES

- ALL AIRWAY AIR DUCTWORK AND ALL DIFFUSER VENTS SHALL HAVE 1" DUCTWORK.
- ALL RETURN AIR DUCTWORK SHALL HAVE 1" ACROSTIC RETAINERS.
- ALL DUCTWORK SHALL HAVE 1/2" DUCTBOARD, UNLESS NOTED OTHERWISE.
- COORDINATE ALL VENTILATION LOCATIONS WITH ARCHITECT, ENGINEER & OWNER.
- ALL DUCTWORK ON MECHANICAL PLANS SHALL BE CONFORMANT WITH MECHANICAL STANDARDS & IN COMPLIANCE WITH ALL APPLICABLE STANDARDS.
- ALL EXISTING DIFFUSERS SHALL BE SEaled.
- PROVIDE 1/4" VENT VALVES AT ALL HIGH POINTS.
- ALL DUCTWORK SHALL BE INSTALLED AS HIGH AS STRUCTURE ALLOWS UNLESS NOTED OTHERWISE.
- ALL PIPING SHOWN OFFSET FOR CLARITY. SHUTTER IS ROUTED ON TOP & LEFT, RETURN IS ROUTED ON BOTTOM & RIGHT. ALL PIPING SHALL BE INSTALLED IN ACCORDANCE WITH ALL APPLICABLE STANDARDS.
- COORDINATE ROUTING OF DUCTWORK & FILTERS WITH ALL TRADES, COORDINATE ALL ROOF PENETRATIONS WITH ALL TRADES.
- VERIFY LOCATION AND SIZE OF EXISTING DUCTWORK TO REMAIN FOR ACCURATE INSTALLATION OF NEW WORK.
- CONSERVATIVE DRAIN TRAYS ON ALL ROOFTOP UNITS SHALL BE CONSTRUCTED OF FLEXIBLE AND/OR FORMABLE.
- 3/4" RISERS (VDC).
- REMOVE EXISTING DUCTWORK AND DAMPERS SEEN IN/AC LEGEND SHEET (S).



MECHANICAL REFERENCE NOTES

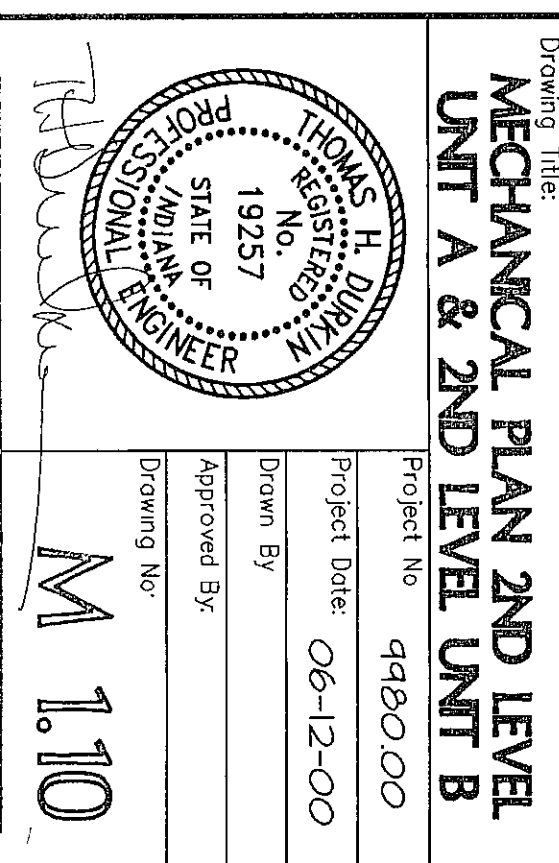
1. CAP EXIST. HEATER LINES FROM REMOVED CABINET HEATER, DIV. 05 TO PATCH FLOOR AND WALL.
2. BLANKED OF EXIST. DUCT OPENING, FLOOR TO BE FINISHED BY OTHERS. SIZE INDICATED ON PLANS.
3. EXIST. CABINET HEATER FINED ROTATOR OR UNIT HEATER SHALL REMAIN. PROVIDE NEW 1/4" VENT AND CONTROL VALVES TO EXIST. UNIT. UNIT SHALL BE ELECTRICALLY WIRING.
4. PROVIDE NEW NON-ADJUSTABLE RECESSED SENSOR. CONNECT TO ALL TOILET ROOMS LOCATOR ROOMS AND CORRIDORS.
5. PROVIDE NEW 1/4" VENT W/ADJUSTABLE COVER. CONNECT TO NEW NETWORK.
6. PROVIDE FRESH AIR AND EQUAL TO GREENWICK FASHA. PROVIDE 1/4" VENT W/ADJUSTABLE COVER. PROVIDE FRESH AIR AND EQUAL TO GREENWICK FASHA. PROVIDE 1/4" VENT W/ADJUSTABLE COVER. PROVIDE FRESH AIR AND EQUAL TO GREENWICK FASHA.
7. PROVIDE 1/4" VENT W/ADJUSTABLE COVER. PROVIDE FRESH AIR AND EQUAL TO GREENWICK FASHA. PROVIDE 1/4" VENT W/ADJUSTABLE COVER. PROVIDE FRESH AIR AND EQUAL TO GREENWICK FASHA.
8. PROVIDE 1/4" VENT W/ADJUSTABLE COVER. PROVIDE FRESH AIR AND EQUAL TO GREENWICK FASHA. PROVIDE 1/4" VENT W/ADJUSTABLE COVER. PROVIDE FRESH AIR AND EQUAL TO GREENWICK FASHA.
9. PROVIDE 1/4" VENT W/ADJUSTABLE COVER. PROVIDE FRESH AIR AND EQUAL TO GREENWICK FASHA. PROVIDE 1/4" VENT W/ADJUSTABLE COVER. PROVIDE FRESH AIR AND EQUAL TO GREENWICK FASHA.
10. PROVIDE 1/4" VENT W/ADJUSTABLE COVER. PROVIDE FRESH AIR AND EQUAL TO GREENWICK FASHA. PROVIDE 1/4" VENT W/ADJUSTABLE COVER. PROVIDE FRESH AIR AND EQUAL TO GREENWICK FASHA.
11. PROVIDE 1/4" VENT W/ADJUSTABLE COVER. PROVIDE FRESH AIR AND EQUAL TO GREENWICK FASHA. PROVIDE 1/4" VENT W/ADJUSTABLE COVER. PROVIDE FRESH AIR AND EQUAL TO GREENWICK FASHA.
12. PROVIDE 1/4" VENT W/ADJUSTABLE COVER. PROVIDE FRESH AIR AND EQUAL TO GREENWICK FASHA. PROVIDE 1/4" VENT W/ADJUSTABLE COVER. PROVIDE FRESH AIR AND EQUAL TO GREENWICK FASHA.
13. PROVIDE 1/4" VENT W/ADJUSTABLE COVER. PROVIDE FRESH AIR AND EQUAL TO GREENWICK FASHA. PROVIDE 1/4" VENT W/ADJUSTABLE COVER. PROVIDE FRESH AIR AND EQUAL TO GREENWICK FASHA.
14. PROVIDE 1/4" VENT W/ADJUSTABLE COVER. PROVIDE FRESH AIR AND EQUAL TO GREENWICK FASHA. PROVIDE 1/4" VENT W/ADJUSTABLE COVER. PROVIDE FRESH AIR AND EQUAL TO GREENWICK FASHA.
15. PROVIDE 1/4" VENT W/ADJUSTABLE COVER. PROVIDE FRESH AIR AND EQUAL TO GREENWICK FASHA. PROVIDE 1/4" VENT W/ADJUSTABLE COVER. PROVIDE FRESH AIR AND EQUAL TO GREENWICK FASHA.
16. PROVIDE 1/4" VENT W/ADJUSTABLE COVER. PROVIDE FRESH AIR AND EQUAL TO GREENWICK FASHA. PROVIDE 1/4" VENT W/ADJUSTABLE COVER. PROVIDE FRESH AIR AND EQUAL TO GREENWICK FASHA.
17. PROVIDE 1/4" VENT W/ADJUSTABLE COVER. PROVIDE FRESH AIR AND EQUAL TO GREENWICK FASHA. PROVIDE 1/4" VENT W/ADJUSTABLE COVER. PROVIDE FRESH AIR AND EQUAL TO GREENWICK FASHA.
18. PROVIDE 1/4" VENT W/ADJUSTABLE COVER. PROVIDE FRESH AIR AND EQUAL TO GREENWICK FASHA. PROVIDE 1/4" VENT W/ADJUSTABLE COVER. PROVIDE FRESH AIR AND EQUAL TO GREENWICK FASHA.
19. PROVIDE 1/4" VENT W/ADJUSTABLE COVER. PROVIDE FRESH AIR AND EQUAL TO GREENWICK FASHA. PROVIDE 1/4" VENT W/ADJUSTABLE COVER. PROVIDE FRESH AIR AND EQUAL TO GREENWICK FASHA.
20. PROVIDE 1/4" VENT W/ADJUSTABLE COVER. PROVIDE FRESH AIR AND EQUAL TO GREENWICK FASHA. PROVIDE 1/4" VENT W/ADJUSTABLE COVER. PROVIDE FRESH AIR AND EQUAL TO GREENWICK FASHA.
21. PROVIDE 1/4" VENT W/ADJUSTABLE COVER. PROVIDE FRESH AIR AND EQUAL TO GREENWICK FASHA. PROVIDE 1/4" VENT W/ADJUSTABLE COVER. PROVIDE FRESH AIR AND EQUAL TO GREENWICK FASHA.
22. PROVIDE 1/4" VENT W/ADJUSTABLE COVER. PROVIDE FRESH AIR AND EQUAL TO GREENWICK FASHA. PROVIDE 1/4" VENT W/ADJUSTABLE COVER. PROVIDE FRESH AIR AND EQUAL TO GREENWICK FASHA.
23. PROVIDE 1/4" VENT W/ADJUSTABLE COVER. PROVIDE FRESH AIR AND EQUAL TO GREENWICK FASHA. PROVIDE 1/4" VENT W/ADJUSTABLE COVER. PROVIDE FRESH AIR AND EQUAL TO GREENWICK FASHA.
24. PROVIDE 1/4" VENT W/ADJUSTABLE COVER. PROVIDE FRESH AIR AND EQUAL TO GREENWICK FASHA. PROVIDE 1/4" VENT W/ADJUSTABLE COVER. PROVIDE FRESH AIR AND EQUAL TO GREENWICK FASHA.
25. PROVIDE 1/4" VENT W/ADJUSTABLE COVER. PROVIDE FRESH AIR AND EQUAL TO GREENWICK FASHA. PROVIDE 1/4" VENT W/ADJUSTABLE COVER. PROVIDE FRESH AIR AND EQUAL TO GREENWICK FASHA.
26. PROVIDE 1/4" VENT W/ADJUSTABLE COVER. PROVIDE FRESH AIR AND EQUAL TO GREENWICK FASHA. PROVIDE 1/4" VENT W/ADJUSTABLE COVER. PROVIDE FRESH AIR AND EQUAL TO GREENWICK FASHA.
27. PROVIDE 1/4" VENT W/ADJUSTABLE COVER. PROVIDE FRESH AIR AND EQUAL TO GREENWICK FASHA. PROVIDE 1/4" VENT W/ADJUSTABLE COVER. PROVIDE FRESH AIR AND EQUAL TO GREENWICK FASHA.
28. PROVIDE 1/4" VENT W/ADJUSTABLE COVER. PROVIDE FRESH AIR AND EQUAL TO GREENWICK FASHA. PROVIDE 1/4" VENT W/ADJUSTABLE COVER. PROVIDE FRESH AIR AND EQUAL TO GREENWICK FASHA.
29. PROVIDE 1/4" VENT W/ADJUSTABLE COVER. PROVIDE FRESH AIR AND EQUAL TO GREENWICK FASHA. PROVIDE 1/4" VENT W/ADJUSTABLE COVER. PROVIDE FRESH AIR AND EQUAL TO GREENWICK FASHA.
30. PROVIDE 1/4" VENT W/ADJUSTABLE COVER. PROVIDE FRESH AIR AND EQUAL TO GREENWICK FASHA. PROVIDE 1/4" VENT W/ADJUSTABLE COVER. PROVIDE FRESH AIR AND EQUAL TO GREENWICK FASHA.
31. PROVIDE 1/4" VENT W/ADJUSTABLE COVER. PROVIDE FRESH AIR AND EQUAL TO GREENWICK FASHA. PROVIDE 1/4" VENT W/ADJUSTABLE COVER. PROVIDE FRESH AIR AND EQUAL TO GREENWICK FASHA.
32. PROVIDE 1/4" VENT W/ADJUSTABLE COVER. PROVIDE FRESH AIR AND EQUAL TO GREENWICK FASHA. PROVIDE 1/4" VENT W/ADJUSTABLE COVER. PROVIDE FRESH AIR AND EQUAL TO GREENWICK FASHA.
33. PROVIDE 1/4" VENT W/ADJUSTABLE COVER. PROVIDE FRESH AIR AND EQUAL TO GREENWICK FASHA. PROVIDE 1/4" VENT W/ADJUSTABLE COVER. PROVIDE FRESH AIR AND EQUAL TO GREENWICK FASHA.
34. PROVIDE 1/4" VENT W/ADJUSTABLE COVER. PROVIDE FRESH AIR AND EQUAL TO GREENWICK FASHA. PROVIDE 1/4" VENT W/ADJUSTABLE COVER. PROVIDE FRESH AIR AND EQUAL TO GREENWICK FASHA.
35. PROVIDE 1/4" VENT W/ADJUSTABLE COVER. PROVIDE FRESH AIR AND EQUAL TO GREENWICK FASHA. PROVIDE 1/4" VENT W/ADJUSTABLE COVER. PROVIDE FRESH AIR AND EQUAL TO GREENWICK FASHA.
36. PROVIDE 1/4" VENT W/ADJUSTABLE COVER. PROVIDE FRESH AIR AND EQUAL TO GREENWICK FASHA. PROVIDE 1/4" VENT W/ADJUSTABLE COVER. PROVIDE FRESH AIR AND EQUAL TO GREENWICK FASHA.
37. PROVIDE 1/4" VENT W/ADJUSTABLE COVER. PROVIDE FRESH AIR AND EQUAL TO GREENWICK FASHA. PROVIDE 1/4" VENT W/ADJUSTABLE COVER. PROVIDE FRESH AIR AND EQUAL TO GREENWICK FASHA.

VEAZEY
PARROTT
DURKIN
&
SHOULDERS

ARCHITECTS
ENGINEERS
PLANNERS

RENOVATION PROJECT FOR:
DUNELAND SCHOOL
CORPORATION
CHESTERTON INDIANA

Project No. 9480000
Project Date 06-12-00
Drawn By
Approved By
Drawing No. M 1.10



2000-M-10