

MECHANICAL REFERENCE NOTES:

1. CAP BASE: HANGS LINES FROM SUSPENDED CABINET HEATER. DIV. 05 TO MATCH FLOOR AND WALL FINISH.
2. BLANKET OF OPEN DUCT OPENING: FLOOR TO BE FINISHED BY OTHERS. SEE DETAIL 05-11.1A.
3. EXIST. CABINET HEATER: FINISH ROOFING OR UNIT GUTTER TO EXIST. UNIT: INT. SHALL BE ELECTROSTATICALLY PAINTED. PROVIDE NEW NON-ADJUSTABLE REGISTERS: CONNECT TO NEW NETWORK. TYP. OF ALL TOILET ROOMS, LOCKER ROOMS, AND CORRIDORS.
4. PROVIDE NEW 1'-5/8" SLIDING COVER. CONNECT TO NEW NETWORK.
5. PROVIDE FRESH AIR HOOD EQUAL TO GREENHECK FABA-HOOD VOLUME. SIZE BOXED WEATHERED ROOF CABS. PROVIDE ROTORIZED DAMPER IN FRESH AIR DUCT. ROOMS AS REQD.
6. PROVIDE HORIZ. 16 GA PIPE COVER PER DETAIL. SLAVE TO MATCH ADJACENT HEAT EQUIPMENT. PAINT BY DIV. 04.
7. PROVIDE VERTICAL 16 GA PIPE COVER PER DETAIL. PAINT BY DIV. 04.
8. PROVIDE NEW DEQUANTIFIABLE LOWER IN EXIST. LOCATION. SEE PLAN FOR SIZE, V.I.F.
9. PROVIDE NEW DEQUANTIFIABLE LOWER IN NEW LOCATION. SEE PLAN FOR SIZE, V.I.F.
10. PROVIDE NEW DEQUANTIFIABLE LOWER IN NEW LOCATION. SEE PLAN FOR SIZE, V.I.F.
11. 3/4" O.D. COND. EXPOSE LAMP WORKER CLEARANCE. DRILL FROM OUTSIDE TO AVOID BLOCK-OUT.
12. BOOKSHELVES ADJACENT TO UNIT VENTS SHALL BE MOVED FROM EXIST. LOCATION FOR INSTALLATION OF NEW UNIT VENTS. DIV. 04. SEE DETAIL THIS SHEET.
13. FILTER: CABINET EXHAUST SYSTEM. EXACT LENGTH SHALL BE DETERMINED IN FIELD.
14. EXIST. CEILING PAN TO REMAIN.
15. PROVIDE CONVERSANT PIPE EQUAL TO BECKETT MODEL NO. 44463. EXPOSE 160 HP. LOCATE PUMP BEHIND WALL UNIT/2" FALTS PAN COIL. INT. SHUT DOWN.
16. ROUTE 2 COND. TO NEAREST FLOOR DRAIN IN TUNNEL.
17. REMOVE (2) 3/4" HEAT DUCTS TO FC-3. DROP DOWN IN EXIST. LOCKER TUNNEL TO BE BLOCKED OFF BY DIV. 03.
18. PROVIDE COND. PIPE EQUAL TO BECKETT MODEL NO. 44463. PROVIDE 160 HP. LOCATE PUMP BEHIND WALL UNIT/2" FALTS PAN COIL. INT. SHUT DOWN.
19. PROVIDE 3/4" O.D. COND. PIPE EQUAL TO BECKETT MODEL NO. 44463. PROVIDE 160 HP. LOCATE PUMP BEHIND WALL UNIT/2" FALTS PAN COIL. INT. SHUT DOWN.
20. CONNECT EXISTING 160 O.D. DUCT TO BACK OF FC-3A. DROP DOWN IN EXIST. LOCKER TUNNEL TO BE BLOCKED OFF BY DIV. 03.
21. PROVIDE COND. PIPE EQUAL TO BECKETT MODEL NO. 44463. PROVIDE 160 HP. LOCATE PUMP BEHIND WALL UNIT/2" FALTS PAN COIL. INT. SHUT DOWN.
22. PROVIDE 12" TIE-OFF FROM BELOW EXISTING DUCT.
23. PROVIDE 12" TIE-OFF FROM BELOW EXISTING DUCT.
24. PROVIDE 12" TIE-OFF FROM BELOW EXISTING DUCT.
25. PROVIDE 12" TIE-OFF FROM BELOW EXISTING DUCT.
26. PROVIDE 12" TIE-OFF FROM BELOW EXISTING DUCT.
27. PROVIDE 12" TIE-OFF FROM BELOW EXISTING DUCT.
28. PROVIDE 12" TIE-OFF FROM BELOW EXISTING DUCT.
29. PROVIDE 12" TIE-OFF FROM BELOW EXISTING DUCT.
30. PROVIDE 12" TIE-OFF FROM BELOW EXISTING DUCT.
31. PROVIDE 12" TIE-OFF FROM BELOW EXISTING DUCT.
32. PROVIDE 12" TIE-OFF FROM BELOW EXISTING DUCT.
33. PROVIDE 12" TIE-OFF FROM BELOW EXISTING DUCT.
34. PROVIDE 12" TIE-OFF FROM BELOW EXISTING DUCT.
35. PROVIDE 12" TIE-OFF FROM BELOW EXISTING DUCT.
36. PROVIDE 12" TIE-OFF FROM BELOW EXISTING DUCT.
37. PROVIDE 12" TIE-OFF FROM BELOW EXISTING DUCT.

1. EXISTING DIFFUSER/SILL TO BE REBUILT WHEN WORK. SEE PLAN FOR REBUILD OF DIFFUSER/SILL.

2. REMOVE ALL EXIST. ROOF BALLASTS BEHIND NEW UNIT & DISCARD. DO NOT REPLACE EXISTENCE ON ROOF.

3. NORTH

SCALE: 1/8" = 1'-0"

VEAZEY
PARROTT
DURKIN
&
SHOULDERS

ARCHITECTS
ENGINEERS
PLANNERS

2000 Twenty Two & D
State Street
Indianapolis, IN 46204

RENOVATION PROJECT FOR:
DUNEALD SCHOOL CORP.
CHESTERTON HIGH SCHOOL/MIDDLE SCHOOL
CHESTERTON, INDIANA

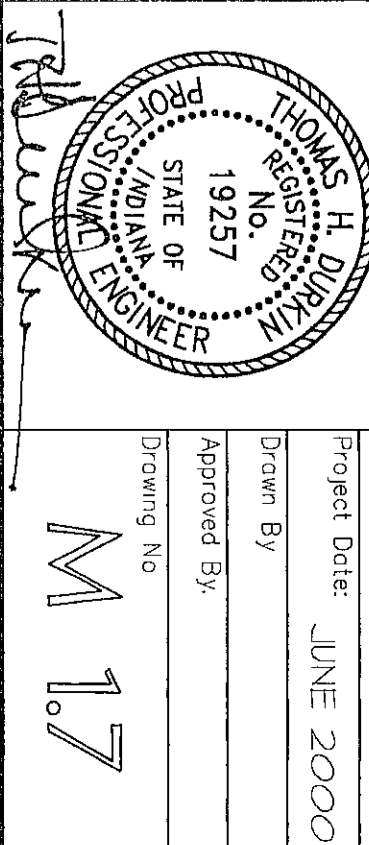
MECHANICAL PLAN UNIT G

Project No. 990000

Drawn By: JUNE 2000

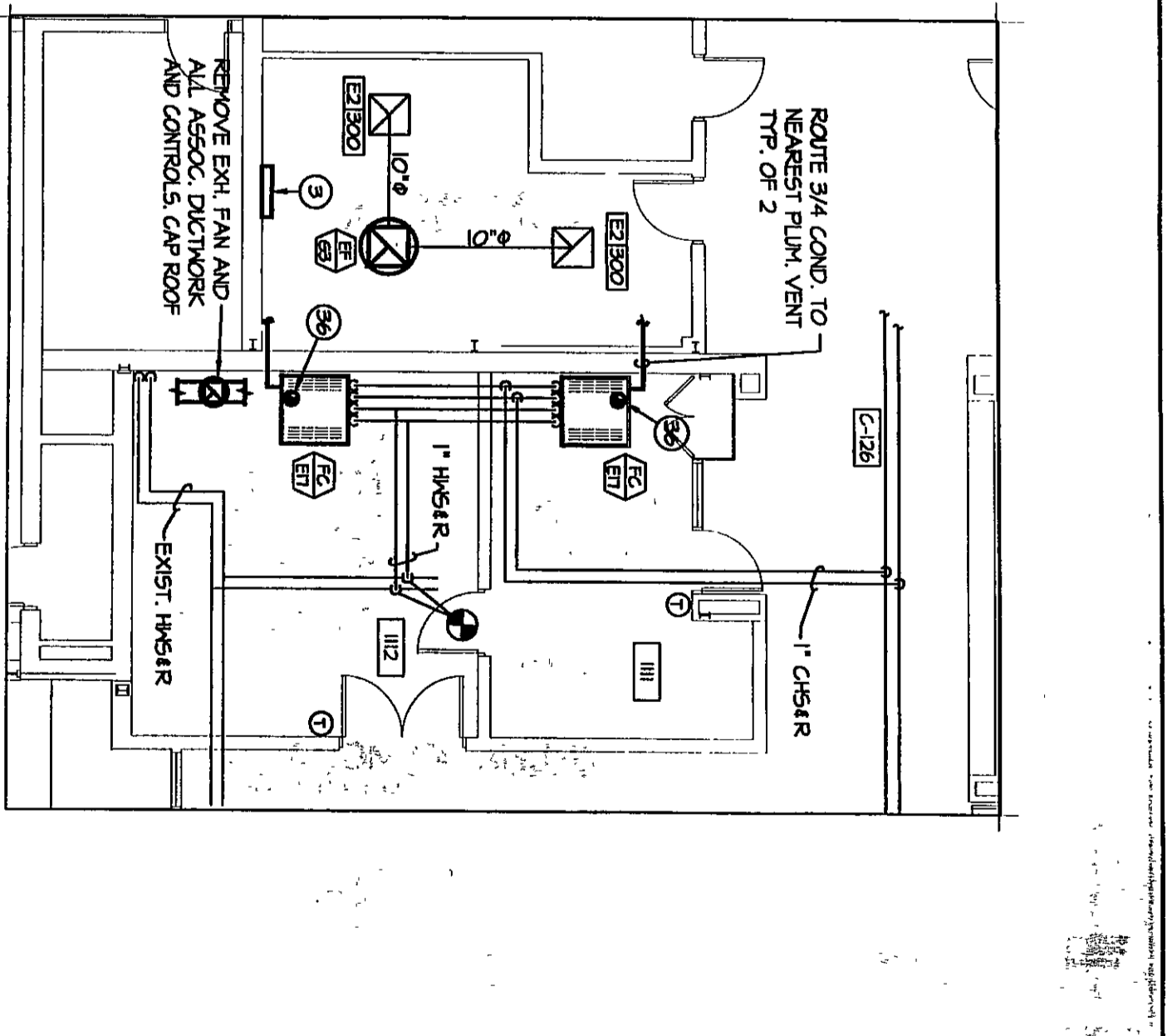
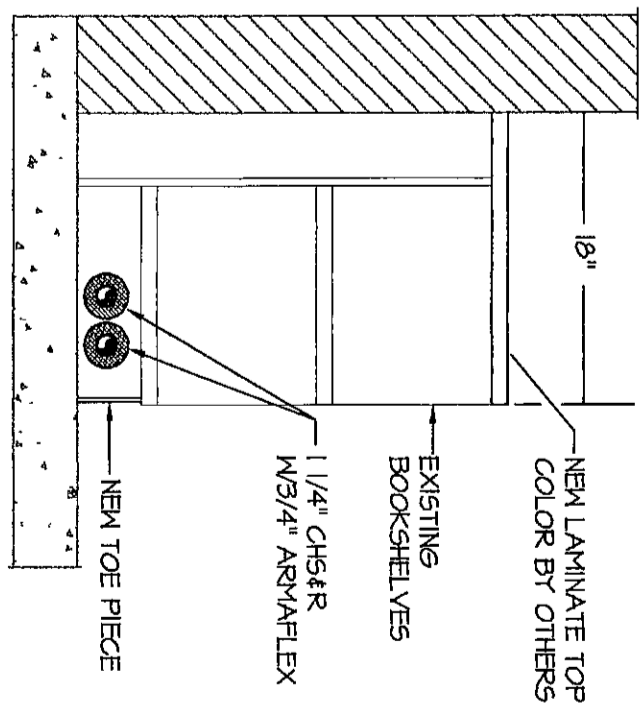
Approved By:

Drawing No. M 17



DETAIL - BOOKSHELVES RM 108 - 110

SCALE: 1/8" = 1'-0"



MECHANICAL PLAN ROOMS 111 & 112

SCALE: 1/8" = 1'-0"

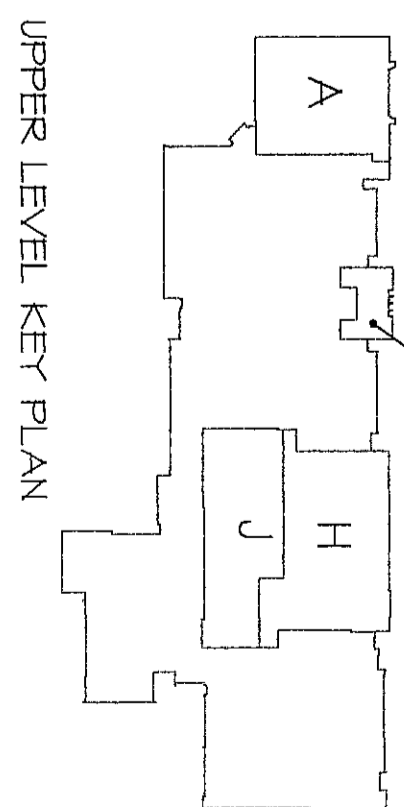
SR-M2

VEAZEY
PARROTT
DURKIN
&
SHOULDERS

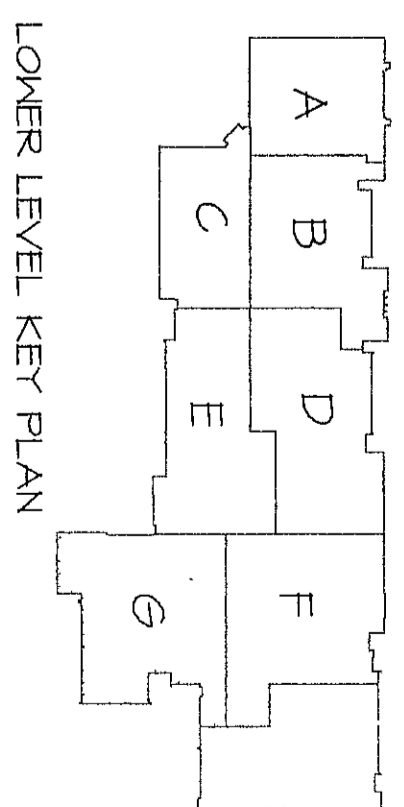
GENERAL MECHANICAL NOTES:

1. ALL SUPPLY AIR DUCTWORK AND ALL OTHER VENTS SHALL HAVE 1" DUCTWORK.
2. ALL RETURN AIR DUCTWORK SHALL HAVE 1" COASTAL FIBERGLASS (FIBERGLASS) DUCTWORK. EXPOSED DUCTWORK SHALL BE PAINTED TO MATCH EXISTING.
3. ALL DUCTWORK SHALL HAVE 1/2" DUCTWORK.
4. ALL DUCTWORK SHALL HAVE 1/2" DUCTWORK.
5. ALL DUCTWORK SHALL HAVE 1/2" DUCTWORK.
6. ALL DUCTWORK SHALL HAVE 1/2" DUCTWORK.
7. ALL DUCTWORK SHALL HAVE 1/2" DUCTWORK.
8. ALL DUCTWORK SHALL HAVE 1/2" DUCTWORK.
9. ALL DUCTWORK SHALL HAVE 1/2" DUCTWORK.
10. ALL DUCTWORK SHALL HAVE 1/2" DUCTWORK.
11. ALL DUCTWORK SHALL HAVE 1/2" DUCTWORK.
12. ALL DUCTWORK SHALL HAVE 1/2" DUCTWORK.
13. ALL DUCTWORK SHALL HAVE 1/2" DUCTWORK.
14. ALL DUCTWORK SHALL HAVE 1/2" DUCTWORK.
15. ALL DUCTWORK SHALL HAVE 1/2" DUCTWORK.
16. ALL DUCTWORK SHALL HAVE 1/2" DUCTWORK.
17. ALL DUCTWORK SHALL HAVE 1/2" DUCTWORK.
18. ALL DUCTWORK SHALL HAVE 1/2" DUCTWORK.
19. ALL DUCTWORK SHALL HAVE 1/2" DUCTWORK.
20. ALL DUCTWORK SHALL HAVE 1/2" DUCTWORK.
21. ALL DUCTWORK SHALL HAVE 1/2" DUCTWORK.
22. ALL DUCTWORK SHALL HAVE 1/2" DUCTWORK.
23. ALL DUCTWORK SHALL HAVE 1/2" DUCTWORK.
24. ALL DUCTWORK SHALL HAVE 1/2" DUCTWORK.
25. ALL DUCTWORK SHALL HAVE 1/2" DUCTWORK.
26. ALL DUCTWORK SHALL HAVE 1/2" DUCTWORK.
27. ALL DUCTWORK SHALL HAVE 1/2" DUCTWORK.
28. ALL DUCTWORK SHALL HAVE 1/2" DUCTWORK.
29. ALL DUCTWORK SHALL HAVE 1/2" DUCTWORK.
30. ALL DUCTWORK SHALL HAVE 1/2" DUCTWORK.
31. ALL DUCTWORK SHALL HAVE 1/2" DUCTWORK.
32. ALL DUCTWORK SHALL HAVE 1/2" DUCTWORK.
33. ALL DUCTWORK SHALL HAVE 1/2" DUCTWORK.
34. ALL DUCTWORK SHALL HAVE 1/2" DUCTWORK.
35. ALL DUCTWORK SHALL HAVE 1/2" DUCTWORK.
36. ALL DUCTWORK SHALL HAVE 1/2" DUCTWORK.
37. ALL DUCTWORK SHALL HAVE 1/2" DUCTWORK.
38. ALL DUCTWORK SHALL HAVE 1/2" DUCTWORK.
39. ALL DUCTWORK SHALL HAVE 1/2" DUCTWORK.
40. ALL DUCTWORK SHALL HAVE 1/2" DUCTWORK.
41. ALL DUCTWORK SHALL HAVE 1/2" DUCTWORK.
42. ALL DUCTWORK SHALL HAVE 1/2" DUCTWORK.
43. ALL DUCTWORK SHALL HAVE 1/2" DUCTWORK.
44. ALL DUCTWORK SHALL HAVE 1/2" DUCTWORK.
45. ALL DUCTWORK SHALL HAVE 1/2" DUCTWORK.
46. ALL DUCTWORK SHALL HAVE 1/2" DUCTWORK.
47. ALL DUCTWORK SHALL HAVE 1/2" DUCTWORK.
48. ALL DUCTWORK SHALL HAVE 1/2" DUCTWORK.
49. ALL DUCTWORK SHALL HAVE 1/2" DUCTWORK.
50. ALL DUCTWORK SHALL HAVE 1/2" DUCTWORK.
51. ALL DUCTWORK SHALL HAVE 1/2" DUCTWORK.
52. ALL DUCTWORK SHALL HAVE 1/2" DUCTWORK.
53. ALL DUCTWORK SHALL HAVE 1/2" DUCTWORK.
54. ALL DUCTWORK SHALL HAVE 1/2" DUCTWORK.
55. ALL DUCTWORK SHALL HAVE 1/2" DUCTWORK.
56. ALL DUCTWORK SHALL HAVE 1/2" DUCTWORK.
57. ALL DUCTWORK SHALL HAVE 1/2" DUCTWORK.
58. ALL DUCTWORK SHALL HAVE 1/2" DUCTWORK.
59. ALL DUCTWORK SHALL HAVE 1/2" DUCTWORK.
60. ALL DUCTWORK SHALL HAVE 1/2" DUCTWORK.
61. ALL DUCTWORK SHALL HAVE 1/2" DUCTWORK.
62. ALL DUCTWORK SHALL HAVE 1/2" DUCTWORK.
63. ALL DUCTWORK SHALL HAVE 1/2" DUCTWORK.
64. ALL DUCTWORK SHALL HAVE 1/2" DUCTWORK.
65. ALL DUCTWORK SHALL HAVE 1/2" DUCTWORK.
66. ALL DUCTWORK SHALL HAVE 1/2" DUCTWORK.
67. ALL DUCTWORK SHALL HAVE 1/2" DUCTWORK.
68. ALL DUCTWORK SHALL HAVE 1/2" DUCTWORK.
69. ALL DUCTWORK SHALL HAVE 1/2" DUCTWORK.
70. ALL DUCTWORK SHALL HAVE 1/2" DUCTWORK.
71. ALL DUCTWORK SHALL HAVE 1/2" DUCTWORK.
72. ALL DUCTWORK SHALL HAVE 1/2" DUCTWORK.
73. ALL DUCTWORK SHALL HAVE 1/2" DUCTWORK.
74. ALL DUCTWORK SHALL HAVE 1/2" DUCTWORK.
75. ALL DUCTWORK SHALL HAVE 1/2" DUCTWORK.
76. ALL DUCTWORK SHALL HAVE 1/2" DUCTWORK.
77. ALL DUCTWORK SHALL HAVE 1/2" DUCTWORK.
78. ALL DUCTWORK SHALL HAVE 1/2" DUCTWORK.
79. ALL DUCTWORK SHALL HAVE 1/2" DUCTWORK.
80. ALL DUCTWORK SHALL HAVE 1/2" DUCTWORK.
81. ALL DUCTWORK SHALL HAVE 1/2" DUCTWORK.
82. ALL DUCTWORK SHALL HAVE 1/2" DUCTWORK.
83. ALL DUCTWORK SHALL HAVE 1/2" DUCTWORK.
84. ALL DUCTWORK SHALL HAVE 1/2" DUCTWORK.
85. ALL DUCTWORK SHALL HAVE 1/2" DUCTWORK.
86. ALL DUCTWORK SHALL HAVE 1/2" DUCTWORK.
87. ALL DUCTWORK SHALL HAVE 1/2" DUCTWORK.
88. ALL DUCTWORK SHALL HAVE 1/2" DUCTWORK.
89. ALL DUCTWORK SHALL HAVE 1/2" DUCTWORK.
90. ALL DUCTWORK SHALL HAVE 1/2" DUCTWORK.
91. ALL DUCTWORK SHALL HAVE 1/2" DUCTWORK.
92. ALL DUCTWORK SHALL HAVE 1/2" DUCTWORK.
93. ALL DUCTWORK SHALL HAVE 1/2" DUCTWORK.
94. ALL DUCTWORK SHALL HAVE 1/2" DUCTWORK.
95. ALL DUCTWORK SHALL HAVE 1/2" DUCTWORK.
96. ALL DUCTWORK SHALL HAVE 1/2" DUCTWORK.
97. ALL DUCTWORK SHALL HAVE 1/2" DUCTWORK.
98. ALL DUCTWORK SHALL HAVE 1/2" DUCTWORK.
99. ALL DUCTWORK SHALL HAVE 1/2" DUCTWORK.
100. ALL DUCTWORK SHALL HAVE 1/2" DUCTWORK.
101. ALL DUCTWORK SHALL HAVE 1/2" DUCTWORK.
102. ALL DUCTWORK SHALL HAVE 1/2" DUCTWORK.
103. ALL DUCTWORK SHALL HAVE 1/2" DUCTWORK.
104. ALL DUCTWORK SHALL HAVE 1/2" DUCTWORK.
105. ALL DUCTWORK SHALL HAVE 1/2" DUCTWORK.
106. ALL DUCTWORK SHALL HAVE 1/2" DUCTWORK.
107. ALL DUCTWORK SHALL HAVE 1/2" DUCTWORK.
108. ALL DUCTWORK SHALL HAVE 1/2" DUCTWORK.
109. ALL DUCTWORK SHALL HAVE 1/2" DUCTWORK.
110. ALL DUCTWORK SHALL HAVE 1/2" DUCTWORK.
111. ALL DUCTWORK SHALL HAVE 1/2" DUCTWORK.
112. ALL DUCTWORK SHALL HAVE 1/2" DUCTWORK.
113. ALL DUCTWORK SHALL HAVE 1/2" DUCTWORK.
114. ALL DUCTWORK SHALL HAVE 1/2" DUCTWORK.
115. ALL DUCTWORK SHALL HAVE 1/2" DUCTWORK.
116. ALL DUCTWORK SHALL HAVE 1/2" DUCTWORK.
117. ALL DUCTWORK SHALL HAVE 1/2" DUCTWORK.
118. ALL DUCTWORK SHALL HAVE 1/2" DUCTWORK.
119. ALL DUCTWORK SHALL HAVE 1/2" DUCTWORK.
120. ALL DUCTWORK SHALL HAVE 1/2" DUCTWORK.
121. ALL DUCTWORK SHALL HAVE 1/2" DUCTWORK.
122. ALL DUCTWORK SHALL HAVE 1/2" DUCTWORK.
123. ALL DUCTWORK SHALL HAVE 1/2" DUCTWORK.
124. ALL DUCTWORK SHALL HAVE 1/2" DUCTWORK.
125. ALL DUCTWORK SHALL HAVE 1/2" DUCTWORK.
126. ALL DUCTWORK SHALL HAVE 1/2" DUCTWORK.
127. ALL DUCTWORK SHALL HAVE 1/2" DUCTWORK.
128. ALL DUCTWORK SHALL HAVE 1/2" DUCTWORK.
129. ALL DUCTWORK SHALL HAVE 1/2" DUCTWORK.
130. ALL DUCTWORK SHALL HAVE 1/2" DUCTWORK.
131. ALL DUCTWORK SHALL HAVE 1/2" DUCTWORK.
132. ALL DUCTWORK SHALL HAVE 1/2" DUCTWORK.
133. ALL DUCTWORK SHALL HAVE 1/2" DUCTWORK.
134. ALL DUCTWORK SHALL HAVE 1/2" DUCTWORK.
135. ALL DUCTWORK SHALL HAVE 1/2" DUCTWORK.
136. ALL DUCTWORK SHALL HAVE 1/2" DUCTWORK.
137. ALL DUCTWORK SHALL HAVE 1/2" DUCTWORK.
138. ALL DUCTWORK SHALL HAVE 1/2" DUCTWORK.
139. ALL DUCTWORK SHALL HAVE 1/2" DUCTWORK.
140. ALL DUCTWORK SHALL HAVE 1/2" DUCTWORK.
141. ALL DUCTWORK SHALL HAVE 1/2" DUCTWORK.
142. ALL DUCTWORK SHALL HAVE 1/2" DUCTWORK.
143. ALL DUCTWORK SHALL HAVE 1/2" DUCTWORK.
144. ALL DUCTWORK SHALL HAVE 1/2" DUCTWORK.
145. ALL DUCTWORK SHALL HAVE 1/2" DUCTWORK.
146. ALL DUCTWORK SHALL HAVE 1/2" DUCTWORK.
147. ALL DUCTWORK SHALL HAVE 1/2" DUCTWORK.
148. ALL DUCTWORK SHALL HAVE 1/2" DUCTWORK.
149. ALL DUCTWORK SHALL HAVE 1/2" DUCTWORK.
150. ALL DUCTWORK SHALL HAVE 1/2" DUCTWORK.
151. ALL DUCTWORK SHALL HAVE 1/2" DUCTWORK.
152. ALL DUCTWORK SHALL HAVE 1/2" DUCTWORK.
153. ALL DUCTWORK SHALL HAVE 1/2" DUCTWORK.
154. ALL DUCTWORK SHALL HAVE 1/2" DUCTWORK.
155. ALL DUCTWORK SHALL HAVE 1/2" DUCTWORK.
156. ALL DUCTWORK SHALL HAVE 1/2" DUCTWORK.
157. ALL DUCTWORK SHALL HAVE 1/2" DUCTWORK.
158. ALL DUCTWORK SHALL HAVE 1/2" DUCTWORK.
159. ALL DUCTWORK SHALL HAVE 1/2" DUCTWORK.
160. ALL DUCTWORK SHALL HAVE 1/2" DUCTWORK.
161. ALL DUCTWORK SHALL HAVE 1/2" DUCTWORK.
162. ALL DUCTWORK SHALL HAVE 1/2" DUCTWORK.
163. ALL DUCTWORK SHALL HAVE 1/2" DUCTWORK.
164. ALL DUCTWORK SHALL HAVE 1/2" DUCTWORK.
165. ALL DUCTWORK SHALL HAVE 1/2" DUCTWORK.
166. ALL DUCTWORK SHALL HAVE 1/2" DUCTWORK.
167. ALL DUCTWORK SHALL HAVE 1/2" DUCTWORK.
168. ALL DUCTWORK SHALL HAVE 1/2" DUCTWORK.
169. ALL DUCTWORK SHALL HAVE 1/2" DUCTWORK.
170. ALL DUCTWORK SHALL HAVE 1/2" DUCTWORK.
171. ALL DUCTWORK SHALL HAVE 1/2" DUCTWORK.
172. ALL DUCTWORK SHALL HAVE 1/2" DUCTWORK.
173. ALL DUCTWORK SHALL HAVE 1/2" DUCTWORK.
174. ALL DUCTWORK SHALL HAVE 1/2" DUCTWORK.
175. ALL DUCTWORK SHALL HAVE 1/2" DUCTWORK.
176. ALL DUCTWORK SHALL HAVE 1/2" DUCTWORK.
177. ALL DUCTWORK SHALL HAVE 1/2" DUCTWORK.
178. ALL DUCTWORK SHALL HAVE 1/2" DUCTWORK.
179. ALL DUCTWORK SHALL HAVE 1/2" DUCTWORK.
180. ALL DUCTWORK SHALL HAVE 1/2" DUCTWORK.
181. ALL DUCTWORK SHALL HAVE 1/2" DUCTWORK.
182. ALL DUCTWORK SHALL HAVE 1/2" DUCTWORK.
183. ALL DUCTWORK SHALL HAVE 1/2" DUCTWORK.
184. ALL DUCTWORK SHALL HAVE 1/2" DUCTWORK.
185. ALL DUCTWORK SHALL HAVE 1/2" DUCTWORK.
186. ALL DUCTWORK SHALL HAVE 1/2" DUCTWORK.
187. ALL DUCTWORK SHALL HAVE 1/2" DUCTWORK.
188. ALL DUCTWORK SHALL HAVE 1/2" DUCTWORK.
189. ALL DUCTWORK SHALL HAVE 1/2" DUCTWORK.
190. ALL DUCTWORK SHALL HAVE 1/2" DUCTWORK.
191. ALL DUCTWORK SHALL HAVE 1/2" DUCTWORK.
192. ALL DUCTWORK SHALL HAVE 1/2" DUCTWORK.
193. ALL DUCTWORK SHALL HAVE 1/2" DUCTWORK.
194. ALL DUCTWORK SHALL HAVE 1/2" DUCTWORK.
195. ALL DUCTWORK SHALL HAVE 1/2" DUCTWORK.
196. ALL DUCTWORK SHALL HAVE 1/2" DUCTWORK.
197. ALL DUCTWORK SHALL HAVE 1/2" DUCTWORK.
198. ALL DUCTWORK SHALL HAVE 1/2" DUCTWORK.
199. ALL DUCTWORK SHALL HAVE 1/2" DUCTWORK.
200. ALL DUCTWORK SHALL HAVE 1/2" DUCTWORK.

UPPER LEVEL KEY PLAN

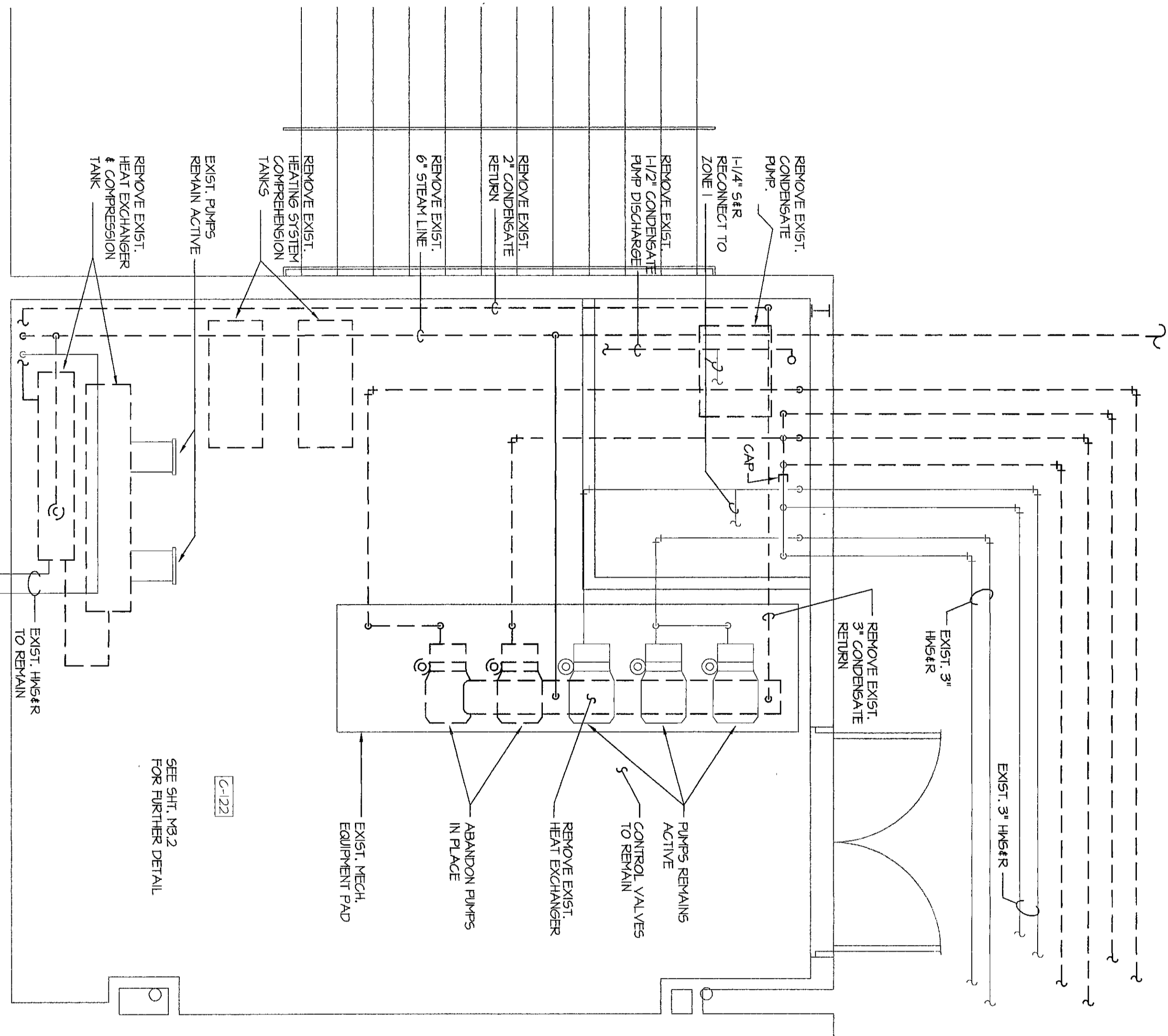


LOWER LEVEL KEY PLAN



ROOM C-122

SCALE: 3/8" = 1'-0"



MECHANICAL PLAN UNIT C

SCALE: 1/8" = 1'-0"

Sheet M 17. See attached Sheet SR-M2 for further detail.

