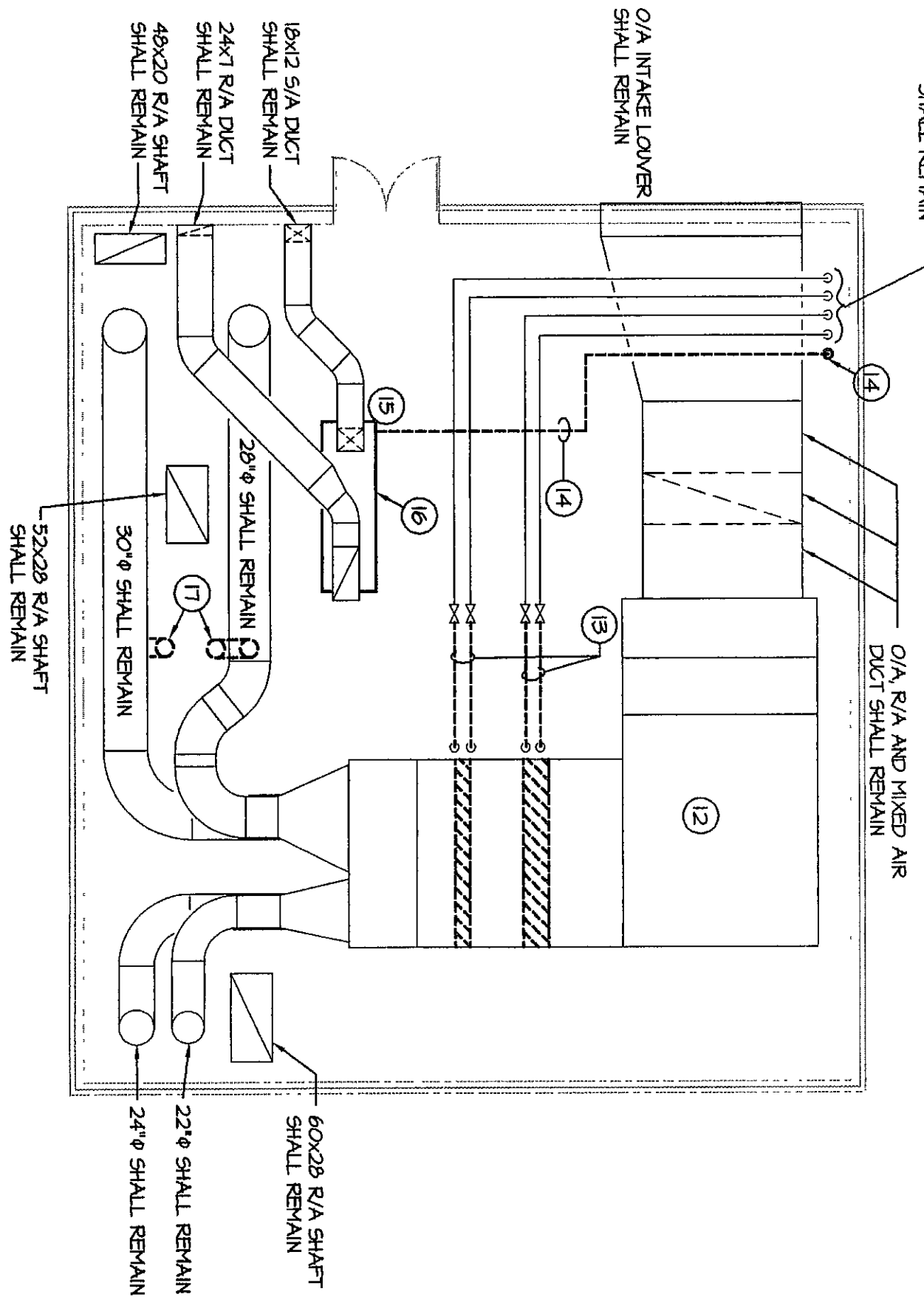


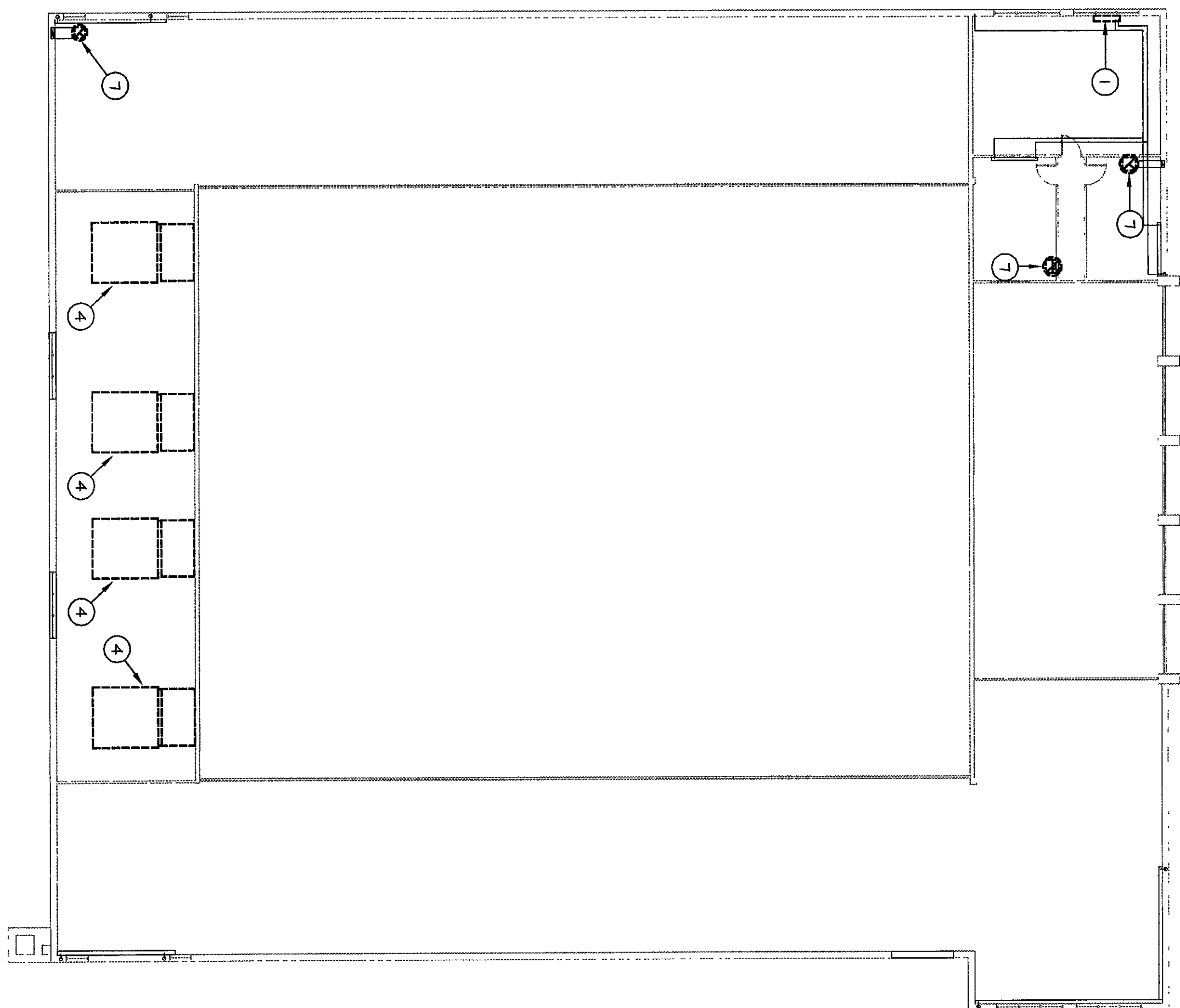
DEMOLITION PLAN TUNNEL O/A ROOM

SCALE: 1/8" = 1'-0"



DEMOLITION PLAN 3RD LEVEL UNIT F

SCALE: 1/8" = 1'-0"



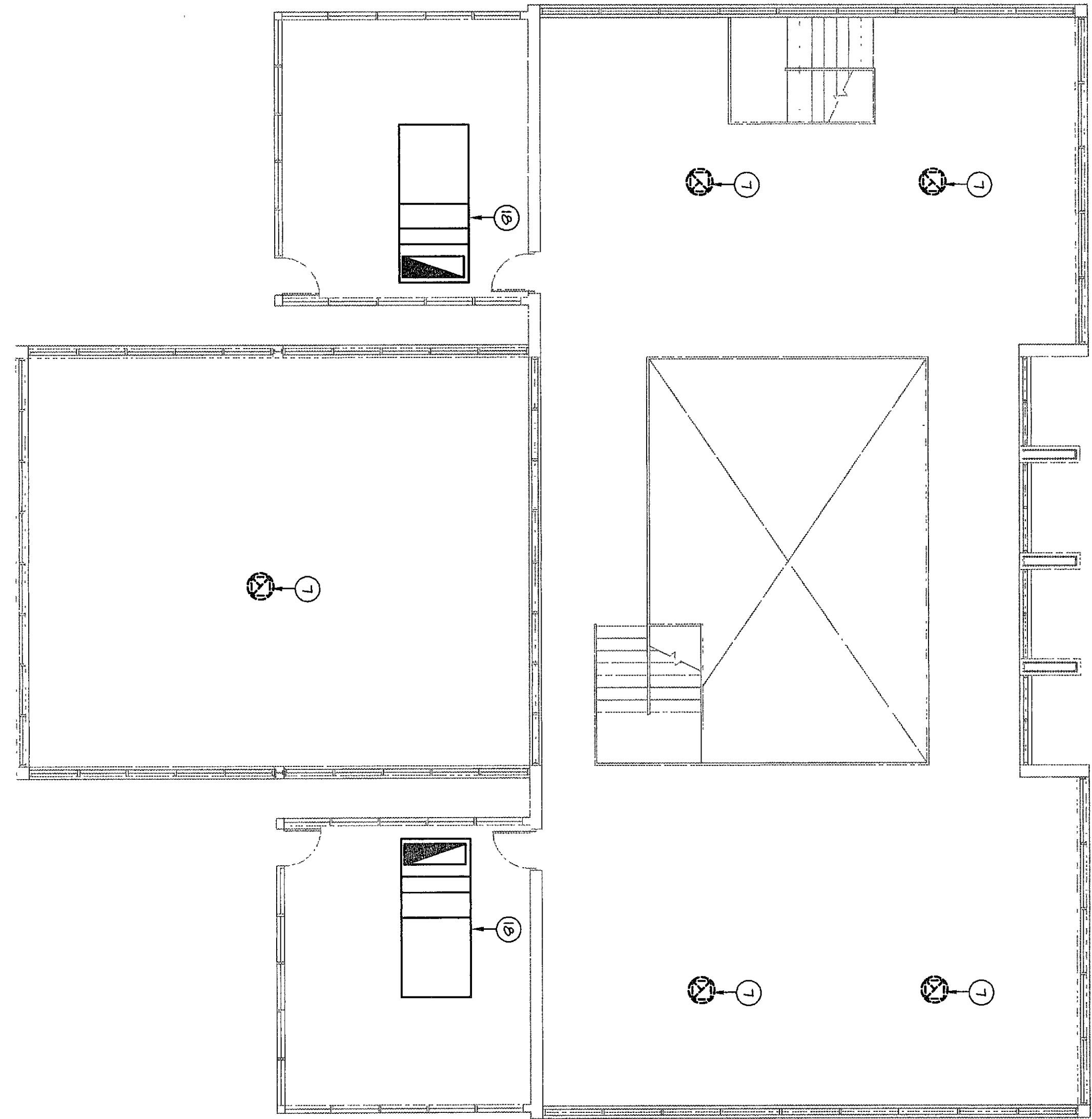
DEMOLITION PLAN 3RD LEVEL UNIT A

SCALE: 1/8" = 1'-0"

- REMOVAL NOTES:**
- REMOVE EXIST. VERTICAL UNIT VENT AND ALL ASSOCIATED WITH FLOOR, TYP. OF ALL.
 - REMOVE EXIST. HORIZONTAL UNIT VENT AND ALL ASSOCIATED DUCTWORK AND CONTROLS, TYP. OF ALL.
 - REMOVE EXIST. HORIZONTAL UNIT ALL ASSOC. PIPING AND CONTROLS, EXIST. DUCT OPEN TO REMAIN AND REBED WHEN WORK.
 - REMOVE EXISTING AIR HANDLING EQUIPMENT AND ALL ASSOC. DUCTWORK AND CONTROLS, EXISTING O/A HOOK AND SUPPORT TO REMAIN AND REBED WHEN WORK.
 - REMOVE EXISTING ROOF-TO-ROOF EQUIPMENT AND ALL ASSOC. DUCTWORK AND CONTROLS, EXISTING O/A HOOK AND SUPPORT TO REMAIN AND REBED WHEN WORK.
 - REMOVE EXISTING CABINET HEATERS AND ALL ASSOC. CONTROLS, TYP. OF ALL.
 - REMOVE EXISTING EXHAUST FANS, EXISTING ROOF CURB AND DUCTWORK TO REMAIN WHEN WORK.
 - REMOVE EXISTING TEST, COVER OPENING WEATHERLESS STEEL PLATE IF NOT REBED, TYP. OF ALL.
 - REMOVE EXIST. DUCTWORK AND ALL ASSOC. GRILLES, DAMPERS, SUPPORTS, AND ETC.
 - REMOVE EXIST. CEILING FANS AND ALL ASSOC. CONTROLS.
 - REMOVE EXIST. PARANCE 1 CONDENSING UNIT AND ALL ASSOC. DUCTWORK AND CONTROLS.
 - EXIST. AIR SHALL BE REPAIRED/REPLACED, REPLACE EXIST. FAN MOTOR WITH NEW REPAIR EFFICIENCY 50 HP FAN MOTOR, EXIST. UNIT SHALL REMAIN EXIST. CHILLED WATER PIPING SHALL REMAIN, REMOVE EXIST. HOT WATER COIL, SEE WHEN WORK.
 - REMOVE EX. GAS 1/2\"/>

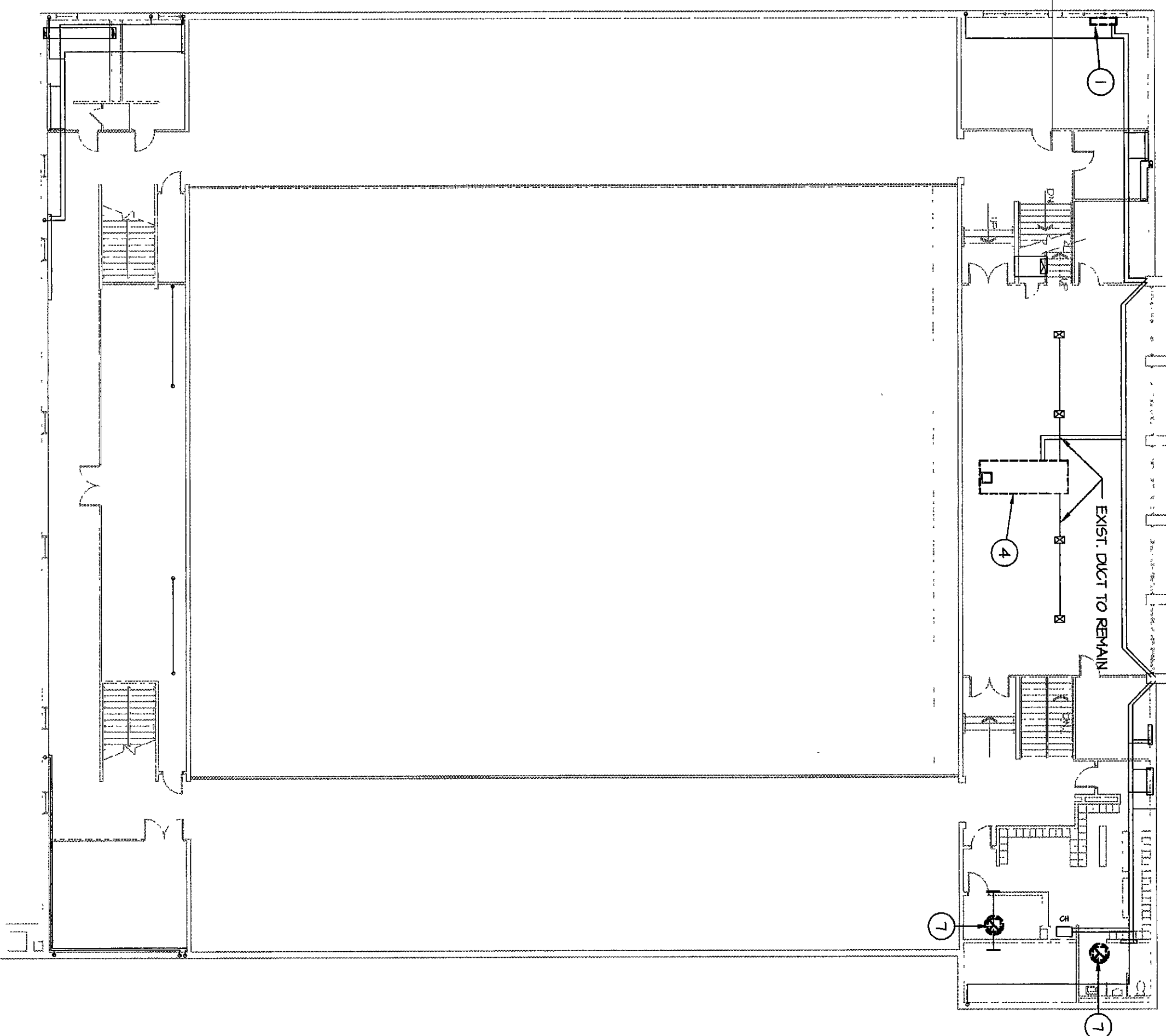
GENERAL REMOVAL NOTES:

- THE CONTRACTOR SHALL BE RESPONSIBLE FOR REMOVING THE BUILDING MATERIALS TO BE DEMOLISHED. THESE MATERIALS SHALL BE REMOVED TO THE STREET OR TO THE CONTRACTOR'S OWN STORAGE. THE CONTRACTOR SHALL BE RESPONSIBLE FOR THE REMOVAL OF ALL MATERIALS FROM THE SITE. THE CONTRACTOR SHALL BE RESPONSIBLE FOR THE REMOVAL OF ALL MATERIALS FROM THE SITE. THE CONTRACTOR SHALL BE RESPONSIBLE FOR THE REMOVAL OF ALL MATERIALS FROM THE SITE.
- FOR FURTHER INFORMATION WITH REGARD TO THE EXTENT OF DEMOLITION, SEE THE CONSTRUCTION PLANS WHICH ILLUSTRATE THE ADJACENT TEN CONSTRUCTION.
- CONTRACTOR SHALL BE RESPONSIBLE FOR ALL REMOVAL OF EXISTING MATERIALS. THE CONTRACTOR SHALL BE RESPONSIBLE FOR THE REMOVAL OF ALL MATERIALS FROM THE SITE. THE CONTRACTOR SHALL BE RESPONSIBLE FOR THE REMOVAL OF ALL MATERIALS FROM THE SITE.
- REMOVAL OF ALL EXISTING CEILING TILES AS INDICATED ON THE DEMOLITION PLAN. THE CONTRACTOR SHALL BE RESPONSIBLE FOR THE REMOVAL OF ALL MATERIALS FROM THE SITE. THE CONTRACTOR SHALL BE RESPONSIBLE FOR THE REMOVAL OF ALL MATERIALS FROM THE SITE.



DEMOLITION PLAN 2ND LEVEL UNIT B

SCALE: 1/8" = 1'-0"



DEMOLITION PLAN 2ND LEVEL UNIT A

SCALE: 1/8" = 1'-0"

**VEAZEY
PARROTT
&
SHOULDERS**

ARCHITECTS
MECHANICAL
PLANNERS

3600 Century Way S., Ste.
Indianapolis, IN 46240

**RENOVATION PROJECT FOR:
DUNELAND SCHOOL
CORPORATION
CESTERTON MIDDLE SCHOOL
CESTERTON, INDIANA**

Drawing Title: **MECHANICAL DEMOLITION PLAN
2ND & 3RD LEVELS UNIT A**

Project No: **948000**

Project Date: **06-12-00**

Drawn By: **MO.4**

Approved By: **MO.4**

Drawing No: **MO.4**

2000-11-10-1