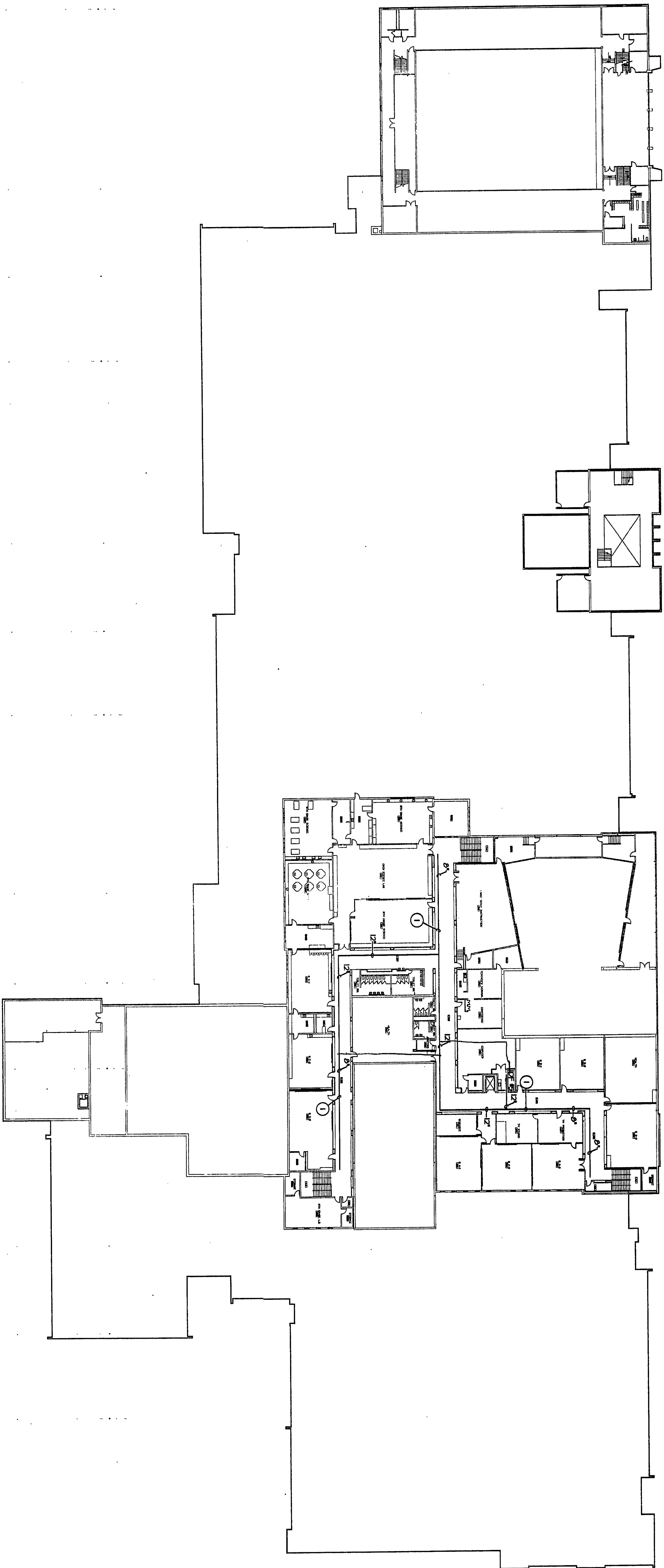


- CABLE TRAY PLAN GENERAL NOTES:**
1. SEE SPECIFICATION SECTION 1604 FOR CABLE TRAY REQUIREMENTS.
  2. CABLE TRAY ROUTING INDICATED IS DIAGNOSTIC ONLY. CONTRACTOR SHALL SUBMIT SHOP DRAWINGS INDICATING EXACT ROUTING AND ELEVATING COORDINATED WITH MECHANICAL, ELECTRICAL AND STRUCTURAL FEATURES.
  3. ALL CABLE TRAY SHALL BE INSTALLED IN CEILING CAVITY UNLESS NOTED OTHERWISE.
  4. REMOVE FIRESTOP MATERIAL IN ACCORDANCE WITH PARTITION PENETRATIONS. STOP ALL CABLE TRAY SHORT OF PARTIAL WALL ON BOTH SIDES. UNTIL 2'-4" REQ. THROUGH SOFT FLOORED CEILING. SEE ARCHITECTURAL PLANS FOR PARTITION RATINGS AND LOCATIONS.
  5. ALL CABLE MANAGEMENT SYSTEM SHALL BE WALL MOUNTED, EXCEPT WHERE INTERFERENCE OCCURS, THEN CENTER HUNG SUPPORT SHALL BE USED.

**NOTES:**

① WALL MOUNTED CABLE TRAY SHALL BE MOUNTED TO WALL WITHIN 18" MAXIMUM OF OBSTRUCTIONS. FIELD VERIFY.



**SECOND FLOOR PLAN - CABLE TRAY LAYOUT**  
SCALE: 1/32" = 1'-0"

**VEAZEY  
PARROTT  
&  
DURKIN  
&  
SHOULDERS**

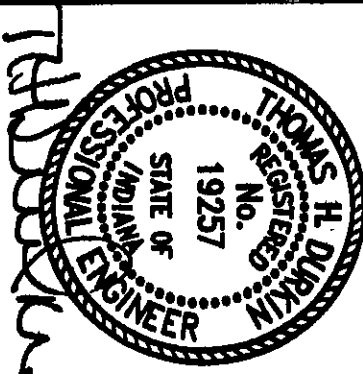
ARCHITECTS  
ENGINEERS  
PLANNERS

2000-06-30  
2000-06-30  
2000-06-30

RENOVATION PROJECT FOR:  
**DUNE AND SCHOOL CORP.**  
CHESTER HIGH SCHOOL/MIDDLE SCHOOL  
CHESTER, INDIANA

Drawing Title:  
**SECOND FLOOR PLAN - CABLE  
TRAY LAYOUT**

Project No: 990000  
Project Date: JUNE 2000  
Drawn By: EWH  
Approved By: TLM  
Drawing No: E 3.2



2000-06-30