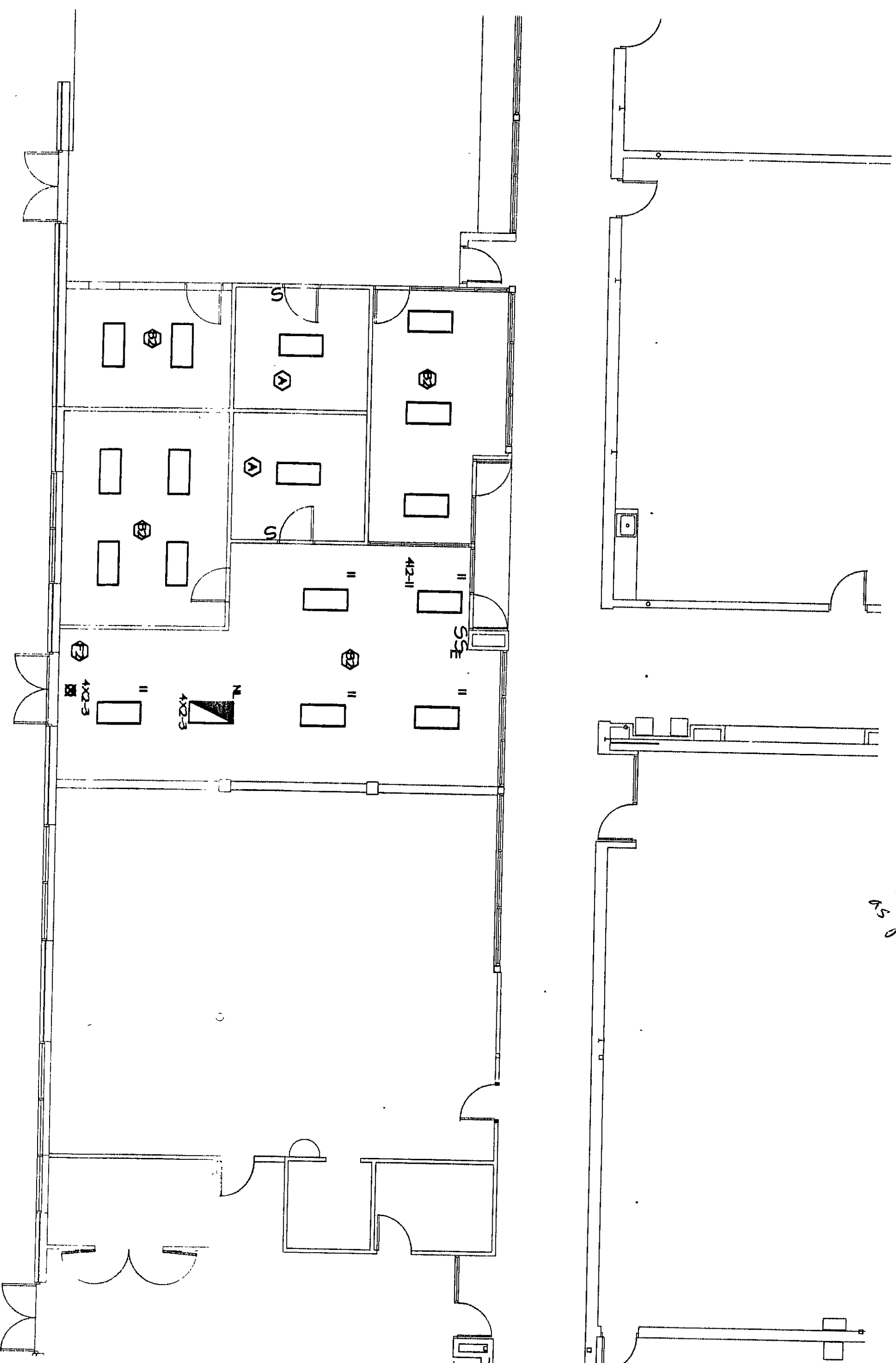
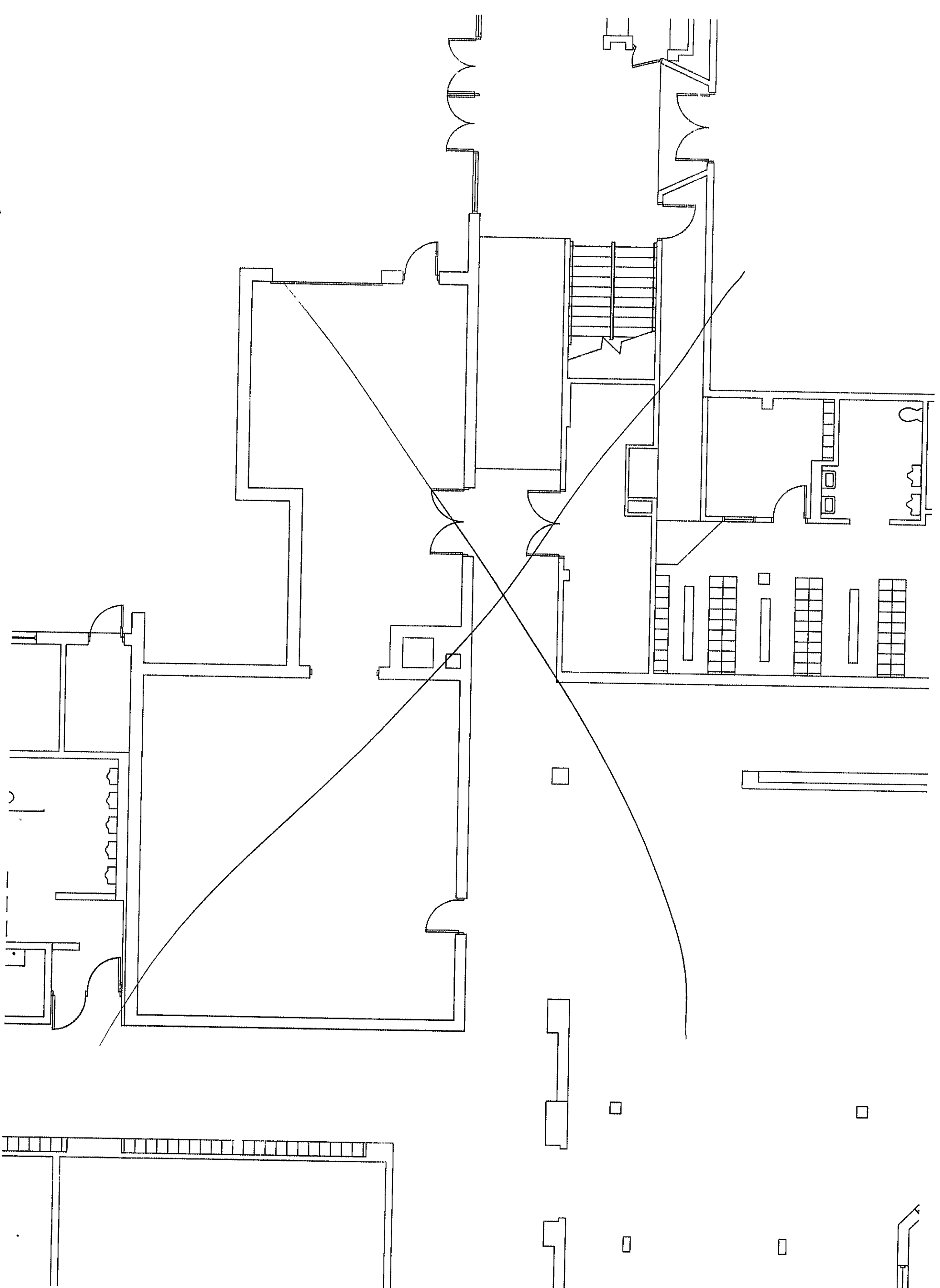


② ^{base} ALTERNATE POWER PLAN
DEDUCTED SOUTH ENTRY

95 This acts close
per this sheet

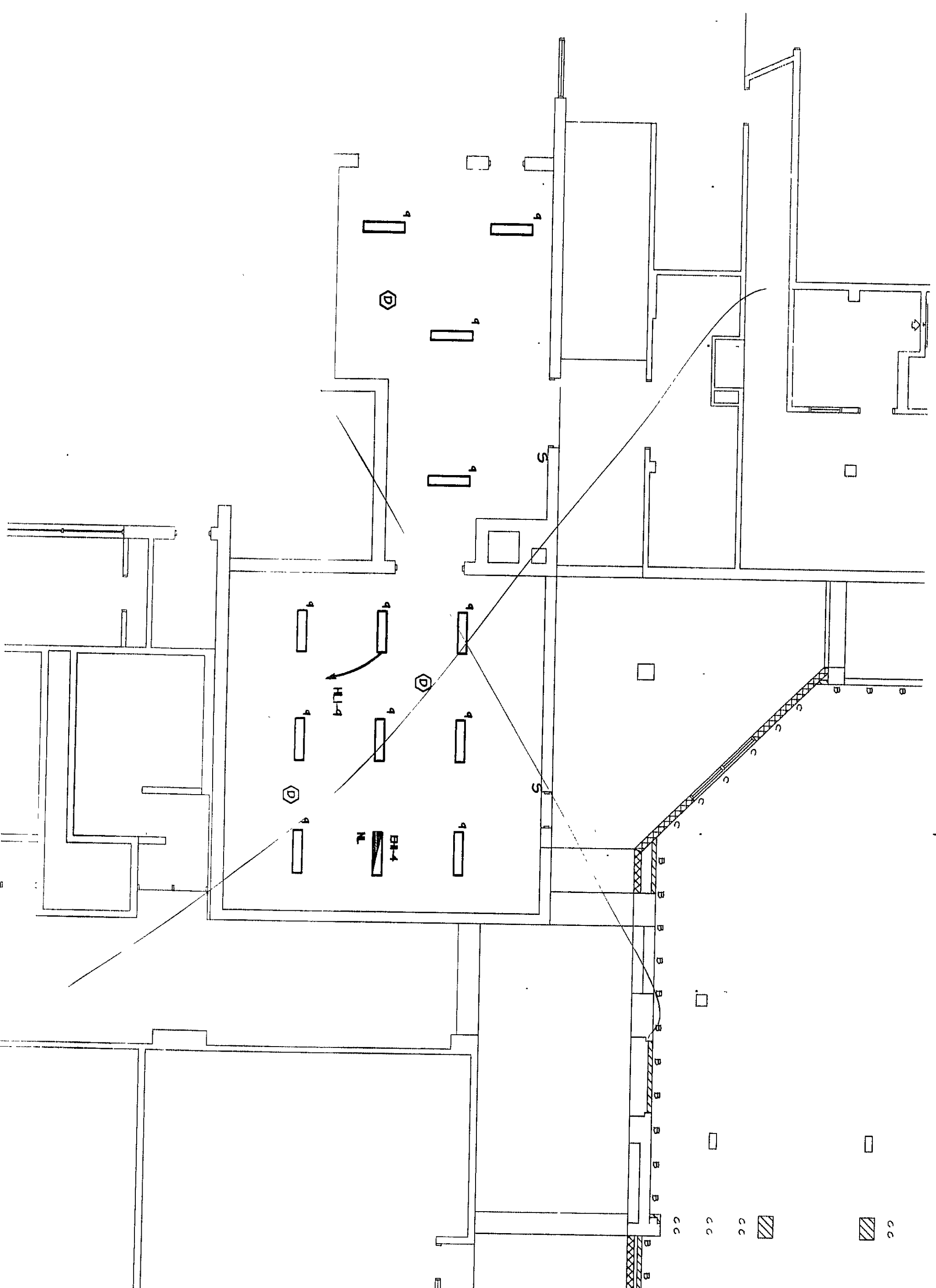


13.1
SCALE: 1/8" = 1'-0"
ALTERNATE LIGHTING PLAN
@ DEDUCTED SOUTH ENTRY



6/15/2
ALTERNATE POWER PLAN
@ DEDUCTED SOUTHWEST ENTRY
SCALE: 1/8" = 1'-0"
- 1.3
ALTERNATE

plus une dose de $E_{1,3}$ + $E_{2,3}$ par phase on donne



2
A31

ALTERNATE LIGHTING PLAN
DEDUCTED SOUTHWEST ENTRY

SCALE 1/8" = 1'-0"

GENERAL NOTE:

A. RECONNECT ALL LIGHTING FIXTURES TO EXIST. CIRCUITS UNLESS OTHERWISE NOTED.

B. DEMOLITION OF LIGHTING FIXTURES ONLY UNDER THE DEDUCT ALTERNATE.

① UTILIZE WIRE-ROD SERIES 400 NON-METALLIC SURFACE RACEWAY TO EXTEND FIRE ALARM CABLE DOWN EXIST. WALL. PROVIDE ALL MOUNTING HARDWARE REQUIRED. DEVICES IN NEW WALLS SHALL UTILIZE 1/2" C IN WALL, SIBBED OUT ABOVE CEILING. NEW CHANNELS FROM EXIST. FLOOR SHALL BE USED FOR ALL ADDITIONAL MONITORING AND STRIKE ONLY DEVICES. ALL STRIKERS AND STAKE DETECTORS CAN BE CONNECTED TO EXIST. DATA LOOP CIRCUIT.

ELECTRICAL NOTES:

**VEAZEY
PARROT
DURKIN &
SHOULDERS**

ARCHITECTS
ENGINEERS
PLANNERS

608 Main Street
Beverly Hills, Ca 97606

RENOVATION PROJECT FOR:
DUNELAND SCHOOL CORP.
CHESTERTON HIGH SCHOOL/MIDDLE SCHOOL
CHESTERTON, MICHIGAN

ELECTRICAL ALTERNATE PLANS

Drawing Title

Project No: 9480.00

Project Date: JUNE 2000

Drawn By: BMH

Approved By: TLM

Drawing No:

E.0.11

E.0.11