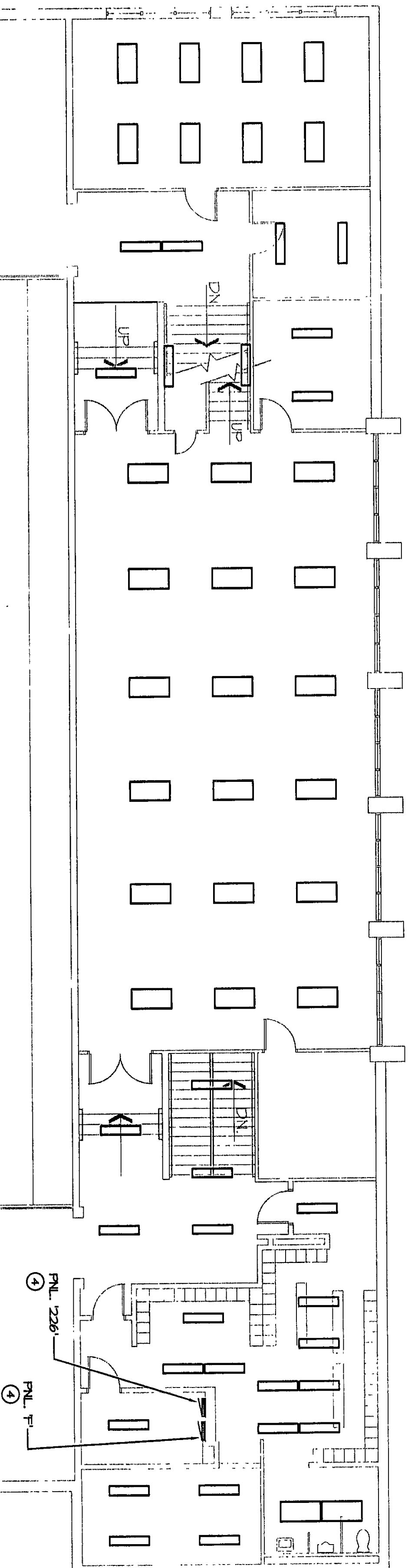
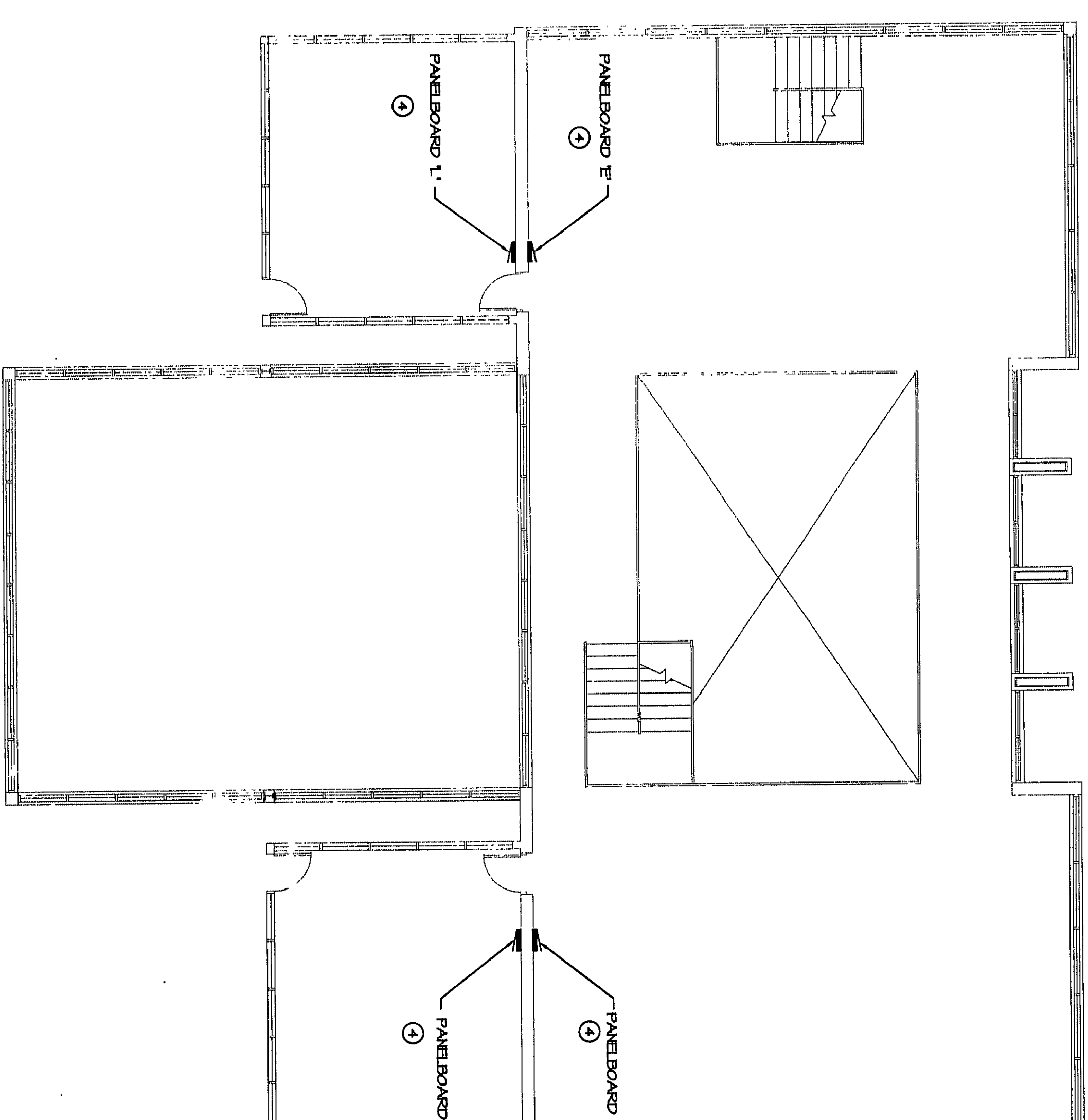


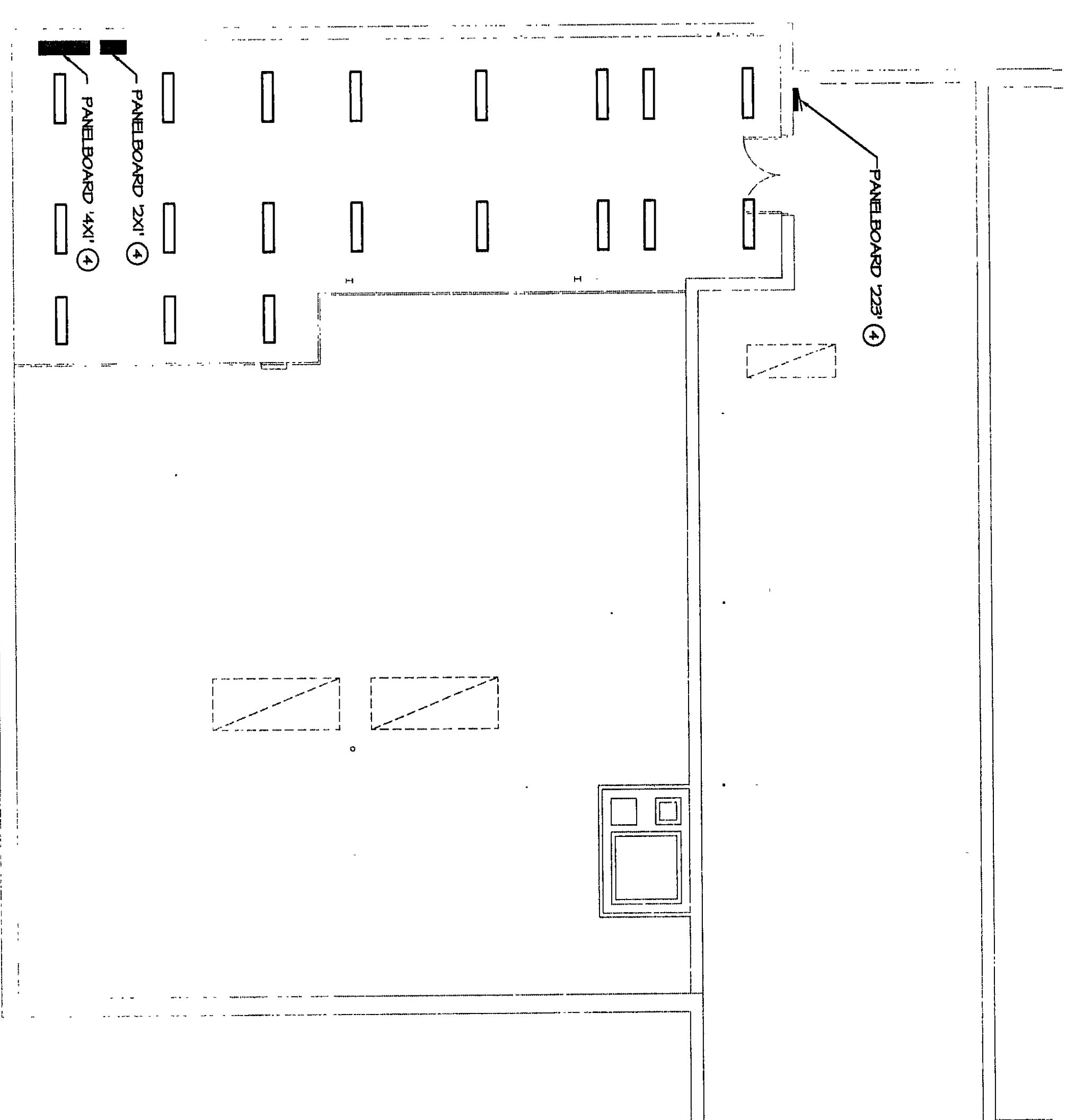
DEMOLITION PLAN - UNIT 'A' 3RD FLOOR
SCALE: 1/8" = 1'-0"



DEMOLITION PLAN - UNIT 'A' UPPER LEVEL



DEMOLITION PLAN - UNIT 'B' UPPER LEVEL
SCALE: 1/8" = 1'-0"



DEMOLITION PLAN - UNIT 'C' UPPER LEVEL
SCALE: 1/8" = 1'-0"

GENERAL ELECTRICAL REMOVAL NOTES:

1. THE CONTRACTOR SHALL BE RESPONSIBLE FOR REMOVAL OF ALL EXISTING EQUIPMENT, INCLUDING THE EXISTING CONDUIT. THE REMOVAL OF EXISTING EQUIPMENT SHALL BE DONE IN A MANNER THAT WILL NOT CAUSE DAMAGE TO THE REMAINING EQUIPMENT. THE REMOVAL OF EXISTING EQUIPMENT SHALL NOT BE USED TO DISGUISE THE REMOVAL OF EXISTING EQUIPMENT.
2. PRIOR TO REMOVAL, THE CONTRACTOR SHALL BE REQUIRED TO OBTAIN THE NECESSARY PERMITS FROM THE LOCAL, STATE, AND FEDERAL AGENCIES.
3. REMOVAL OF EXISTING EQUIPMENT SHALL BE DONE IN A MANNER THAT WILL NOT CAUSE DAMAGE TO THE REMAINING EQUIPMENT. THE REMOVAL OF EXISTING EQUIPMENT SHALL NOT BE USED TO DISGUISE THE REMOVAL OF EXISTING EQUIPMENT.
4. REMOVAL OF EXISTING EQUIPMENT SHALL BE DONE IN A MANNER THAT WILL NOT CAUSE DAMAGE TO THE REMAINING EQUIPMENT. THE REMOVAL OF EXISTING EQUIPMENT SHALL NOT BE USED TO DISGUISE THE REMOVAL OF EXISTING EQUIPMENT.
5. ALL CONDUIT MUST BE REMOVED IN A MANNER THAT WILL NOT CAUSE DAMAGE TO THE REMAINING EQUIPMENT. THE REMOVAL OF EXISTING EQUIPMENT SHALL NOT BE USED TO DISGUISE THE REMOVAL OF EXISTING EQUIPMENT.
6. REMOVAL OF EXISTING EQUIPMENT SHALL BE DONE IN A MANNER THAT WILL NOT CAUSE DAMAGE TO THE REMAINING EQUIPMENT. THE REMOVAL OF EXISTING EQUIPMENT SHALL NOT BE USED TO DISGUISE THE REMOVAL OF EXISTING EQUIPMENT.
7. IF REMOVAL OF EXISTING EQUIPMENT IS REQUIRED, THE CONTRACTOR SHALL BE RESPONSIBLE FOR THE REMOVAL OF EXISTING EQUIPMENT. THE REMOVAL OF EXISTING EQUIPMENT SHALL NOT BE USED TO DISGUISE THE REMOVAL OF EXISTING EQUIPMENT.
8. REMOVAL OF EXISTING EQUIPMENT SHALL BE DONE IN A MANNER THAT WILL NOT CAUSE DAMAGE TO THE REMAINING EQUIPMENT. THE REMOVAL OF EXISTING EQUIPMENT SHALL NOT BE USED TO DISGUISE THE REMOVAL OF EXISTING EQUIPMENT.
9. REMOVAL OF EXISTING EQUIPMENT SHALL BE DONE IN A MANNER THAT WILL NOT CAUSE DAMAGE TO THE REMAINING EQUIPMENT. THE REMOVAL OF EXISTING EQUIPMENT SHALL NOT BE USED TO DISGUISE THE REMOVAL OF EXISTING EQUIPMENT.
10. REMOVAL OF EXISTING EQUIPMENT SHALL BE DONE IN A MANNER THAT WILL NOT CAUSE DAMAGE TO THE REMAINING EQUIPMENT. THE REMOVAL OF EXISTING EQUIPMENT SHALL NOT BE USED TO DISGUISE THE REMOVAL OF EXISTING EQUIPMENT.

GENERAL ELECTRICAL NOTES:

- A. ALL LIGHTING SWITCHES INDICATED SHALL BE REMOVED FOR REPLACEMENT WITH NEW DEVICES.
- B. INTERCOM SYSTEM - ALL SPEAKERS AND CALL SWITCHES SHALL BE DISCONNECTED AND REMOVED.
- C. CLOCK SYSTEM - ALL CLOCKS SHALL BE DISCONNECTED AND REMOVED.
- D. SEE MECHANICAL DEVIATION PLANS ON SHEETS NO. 10, 10.02 AND 10.03 FOR MECHANICAL EQUIPMENT THAT REQUIRES ELECTRICAL DISCONNECTIONS, VERIFY WITH ELECTRICAL POWER DISCONNECTS TO BE AVOIDED FOR RECONNECTED PLANS FOR CABLES TO BE AVOIDED FOR RECONNECTED

NOTES:

- ① DISCONNECT AND REMOVE ALL ELECTRICAL WORK IN THE MEN'S/STRESS ORIENTED WOOD.
- ② DISCONNECT AND REMOVE ALL LIGHTING FIXTURES, INTERCOM SYSTEMS, SMOKE DETECTORS, AND ALL OTHER ELECTRICAL WORK. ALL ELECTRICAL WORK SHALL BE CLEANED AND RE-INSTALLED IN MEN'S CUBES AT SAME LOCATION.
- ③ DISCONNECT AND REMOVE LIGHTING FIXTURES, CEILING FANS, AND SPRINKERS. LIGHTING CIRCUIT TO REMAIN FOR CONNECTION TO NEW LIGHTING FIXTURES AND SPRINKERS.
- ④ USE NEWER MARINE OR GIFT (E.G. O. E.S.I.) FOR DISTRIBUTION WORK REQUIRED ON EXISTING PANEL BOARDS. DISTRIBUTION PANELS AND SWITCHBOARDS.

NORTH
SCALE: 1/8" = 1'-0"

**VEAZEY
PARROTT
DURKIN &
SHOULDERS**

RENOVATION PROJECT FOR:
DUNELAND SCHOOL CORP.
CHESTERTON HIGH SCHOOL/MIDDLE SCHOOL
CHESTERTON, INDIANA

Drawing Title:
**DEMOLITION PLAN - UNT 'A', 1ST
& 'C' UPPER LEVEL & 3RD FLOOR**

Project No: 94B0.00

Project Date: JUNE 2000

Drawn By: BAH

Approved By: TLM

Drawing No: E 0.10

