

GENERAL ELECTRICAL REMOVAL NOTES:

1. THE CONTRACTOR SHALL BE RESPONSIBLE FOR VISITING THE BUILDING AND SITE TO BECOME FAMILIAR WITH THE EXISTING CONDITIONS. THE CONTRACTOR SHALL SUBMIT A DEMOLITION PLAN TO THE OWNER IN THE EVALUATION OF THE EXISTING CONDITIONS. THE DEMOLITION PLAN SHALL BE A PART OF THE CONTRACT DOCUMENTS.
2. FOR FURTHER INFORMATION WITH REGARD TO THE EXISTING CONDITIONS, SEE THE DEMOLITION PLAN WHICH ILLUSTRATES THE EXISTING CONDITIONS. THE CONTRACTOR SHALL BE RESPONSIBLE FOR ALL WORK, WHETHER OR NOT IT IS SPECIFICALLY INDICATED OR NOTED IN THESE DOCUMENTS.
3. CONTRACTOR SHALL BE RESPONSIBLE FOR ALL WORK, WHETHER OR NOT IT IS SPECIFICALLY INDICATED OR NOTED IN THESE DOCUMENTS.
4. ALL EQUIPMENT REMOVED FOR RELATION SHALL BE REMOVED IN SUCH A MANNER THAT REUSE IS POSSIBLE.
5. ALL EQUIPMENT REMOVED IN THIS WORK SHALL HAVE ALL WIRING REMOVED UNLESS WIRING IS REMOVED IN SUCH A MANNER THAT REUSE IS POSSIBLE.
6. REMOVAL OF EXISTING CONCEALED CONDUIT WILL BE THE CONTRACTOR'S RESPONSIBILITY.
7. IF REMOVAL OF EXISTING EQUIPMENT IS REQUIRED, THE CONTRACTOR SHALL BE RESPONSIBLE FOR THE REMOVAL OF THE EQUIPMENT. THE CONTRACTOR SHALL BE RESPONSIBLE FOR THE REMOVAL OF THE EQUIPMENT. THE CONTRACTOR SHALL BE RESPONSIBLE FOR THE REMOVAL OF THE EQUIPMENT.
8. IF WALLS, CEILING, FLOORS, OR EQUIPMENT ARE REMOVED, OR OTHER DEMOLITION OCCURS, WHICH RESULTS IN THE EXPOSURE OF ELECTRICAL SYSTEMS, THE SYSTEMS SHALL BE RELOCATED OR MOVED IN SUCH A MANNER THAT THEY SHALL BECOME A PART OF THE BUILDING. THE CONTRACTOR SHALL BE RESPONSIBLE FOR THE RELOCATION OR MOVING OF THE SYSTEMS. THE CONTRACTOR SHALL BE RESPONSIBLE FOR THE RELOCATION OR MOVING OF THE SYSTEMS.
9. EQUIPMENT REMOVED BUT NOT RELAYED SHALL BE STORED AT LOCATION DIRECTED BY OWNER.
10. DISPOSAL OF LAMPS AND BALLASTS.
11. DISPOSAL OF QUANTITY AND TYPE OF LAMPS, BALLASTS, AND LIGHTING FIXTURES REMOVED.
12. REMOVAL AND DISPOSAL OF BALLASTS AND LAMPS. CONTRACTOR SHALL BE RESPONSIBLE FOR THE REMOVAL AND DISPOSAL OF BALLASTS AND LAMPS. THE CONTRACTOR SHALL BE RESPONSIBLE FOR THE REMOVAL AND DISPOSAL OF BALLASTS AND LAMPS. THE CONTRACTOR SHALL BE RESPONSIBLE FOR THE REMOVAL AND DISPOSAL OF BALLASTS AND LAMPS.
13. REMOVAL AND DISPOSAL OF BALLASTS AND LAMPS. CONTRACTOR SHALL BE RESPONSIBLE FOR THE REMOVAL AND DISPOSAL OF BALLASTS AND LAMPS. THE CONTRACTOR SHALL BE RESPONSIBLE FOR THE REMOVAL AND DISPOSAL OF BALLASTS AND LAMPS. THE CONTRACTOR SHALL BE RESPONSIBLE FOR THE REMOVAL AND DISPOSAL OF BALLASTS AND LAMPS.
14. REMOVAL AND DISPOSAL OF BALLASTS AND LAMPS. CONTRACTOR SHALL BE RESPONSIBLE FOR THE REMOVAL AND DISPOSAL OF BALLASTS AND LAMPS. THE CONTRACTOR SHALL BE RESPONSIBLE FOR THE REMOVAL AND DISPOSAL OF BALLASTS AND LAMPS. THE CONTRACTOR SHALL BE RESPONSIBLE FOR THE REMOVAL AND DISPOSAL OF BALLASTS AND LAMPS.
15. REMOVAL AND DISPOSAL OF BALLASTS AND LAMPS. CONTRACTOR SHALL BE RESPONSIBLE FOR THE REMOVAL AND DISPOSAL OF BALLASTS AND LAMPS. THE CONTRACTOR SHALL BE RESPONSIBLE FOR THE REMOVAL AND DISPOSAL OF BALLASTS AND LAMPS. THE CONTRACTOR SHALL BE RESPONSIBLE FOR THE REMOVAL AND DISPOSAL OF BALLASTS AND LAMPS.

GENERAL ELECTRICAL NOTES:

- A. ALL WIRING AND EQUIPMENT SHALL BE REMOVED FOR REPLACEMENT WITH NEW DEVICES.
- B. INTERCON SYSTEM - ALL SPEAKERS AND CALL SWITCHES SHALL BE DISCONNECTED AND REMOVED.
- C. CLOCK SYSTEM - ALL CLOCKS SHALL BE DISCONNECTED AND REMOVED.
- D. SEE MECHANICAL DEMOLITION PLAN ON SHEET NO. 102 AND 103 FOR MECHANICAL EQUIPMENT THAT REMAINS IN THE BUILDING. THE CONTRACTOR SHALL BE RESPONSIBLE FOR THE REMOVAL OF THE EQUIPMENT. THE CONTRACTOR SHALL BE RESPONSIBLE FOR THE REMOVAL OF THE EQUIPMENT.
- E. POWER PLAN FOR DISCRETS TO REMAIN FOR RECONNECTION BY THE WASTE DISPOSAL FACILITY 98B-CONTRACTOR.

NOTES:

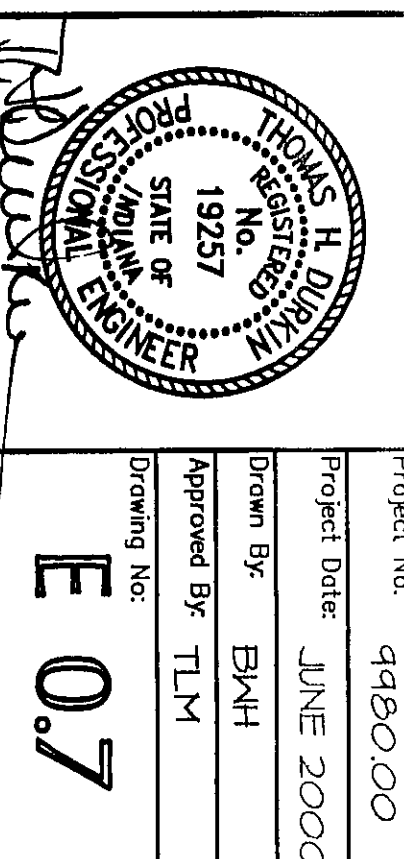
1. DISCONNECT AND REMOVE ALL ELECTRICAL WORK IN THIS AREA UNLESS OTHERWISE NOTED.
2. DISCONNECT AND REMOVE ALL LIGHTING FIXTURES, INTERCOM SPEAKERS, SMOKE DETECTORS, INVA INJURED OTHERS, INTERCOM SYSTEMS, AND REMOVED IN THE SAME LOCATION AND BE REMOVED IN THE SAME LOCATION.
3. DISCONNECT AND REMOVE LIGHTING FIXTURES, CEILING LIGHTS, AND REMOVED IN THE SAME LOCATION.
4. SEE REFER DIAGRAMS ON SHEET NO. 102 & 103 FOR DEMOLITION WORK REQUIRED ON EXISTING PANEL, BOARDS, DISTRIBUTION PANELS AND SWITCHBOARDS.
5. LIGHTING FIXTURES TO REMAIN IN THIS AREA, DISCONNECT AND REMOVE BALLASTS, LAMPS, AND LENS FOR REPLACEMENT.

NORTH
SCALE: 1/8" = 1'-0"

**VEAZEY
PARROTT
DURKIN &
SHOULDERS**
ARCHITECTS
ENGINEERS
PLANNERS
200 N. Main Street
Suite 200
Indianapolis, IN 46204

RENOVATION PROJECT FOR:
**DUNELAND SCHOOL CORP.
CHESTER HIGH SCHOOL/MIDDLE SCHOOL
CHESTER, INDIANA**

Drawing Title:
DEMOLITION PLAN - UNIT 'G'
Project No: 9900000
Drawn By: EAH
Approved By: TLM
Drawing No: E 0.7



2000-2-10