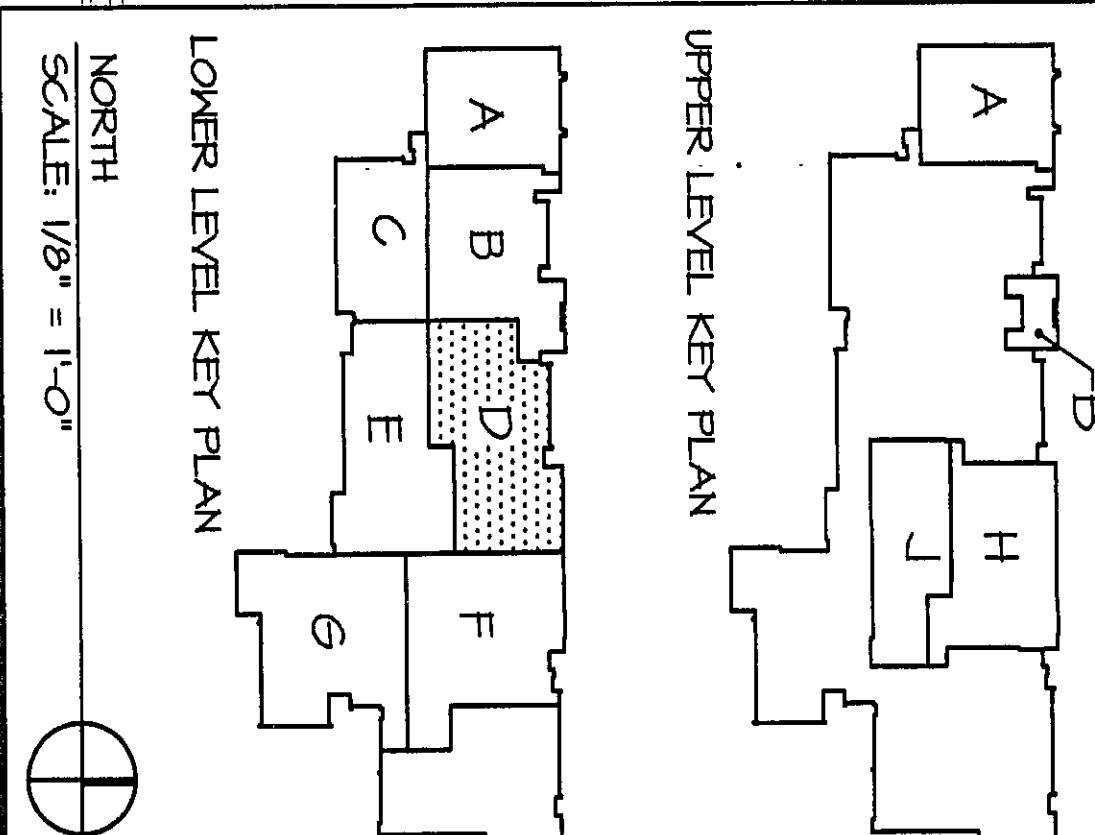


- NOTES**
1. DISCONNECT AND REMOVE ALL ELECTRICAL WORK IN THIS AREA UNLESS OTHERWISE NOTED.
  2. INTERCOM SPEAKERS, SMOKE DETECTORS, INVA. LENSES AND REPAIRS SHALL BE REMOVED BY THE CONTRACTOR AND REINSTALLED IN NEW LOCATIONS AT SAME LOCATION AND ORIENTED IN THE SAME DIRECTION.
  3. DISCONNECT AND REMOVE LIGHTING FIXTURES, CABLES, DIMMERS, AND ALL OTHER ELECTRICAL EQUIPMENT FOR REMOVAL. CONTRACTOR SHALL REMOVE THE EQUIPMENT AND RECONNECT TO NEW LIGHTING FIXTURES AND SWITCHES.
  4. SEE REFER DRAWING ON SHEET E-0.4 FOR E-0.4 FOR PANEL, BOARD, DISTRIBUTION PANELS AND SWITCHBOARDS.
  5. UNLESS NOTED AS NOTED IN THIS AREA SHALL REMAIN CONTRACTOR SHALL REMOVE THE LAMP, BALLAST AND LAMP FOR REPLACEMENT.
  6. EXIST. FACP TO REMAIN. DISCONNECT EXIST. CIRCUIT. RECONNECT TO 200-6, SH. E-0.4.

- GENERAL ELECTRICAL REMOVAL NOTES**
1. THE CONTRACTOR SHALL BE RESPONSIBLE FOR THE REMOVAL OF ALL ELECTRICAL WORK IN THIS AREA UNLESS OTHERWISE NOTED.
  2. EXIST. INTERCOM SPEAKERS, SMOKE DETECTORS, INVA. LENSES AND REPAIRS SHALL BE REMOVED BY THE CONTRACTOR AND REINSTALLED IN NEW LOCATIONS AT SAME LOCATION AND ORIENTED IN THE SAME DIRECTION.
  3. CONTRACTOR SHALL BE RESPONSIBLE FOR ALL REMOVALS REQUIRED FOR THE REMOVAL OF NEW EQUIPMENT. CONTRACTOR SHALL REMOVE THE EQUIPMENT AND RECONNECT TO NEW LIGHTING FIXTURES AND SWITCHES.
  4. ALL EQUIPMENT REMOVED FOR RELOCATION SHALL BE REMOVED IN SUCH A MANNER THAT REUSE IS POSSIBLE.
  5. ALL CABLES TO BE REMOVED EQUIPMENT SHALL HAVE ALL WIRING REMOVED UNLESS NOTED OTHERWISE. CONTRACTOR SHALL REMOVE THE EQUIPMENT AND RECONNECT TO NEW LIGHTING FIXTURES AND SWITCHES.
  6. REMOVAL OF EMPTY CONCEALED CONDUIT WILL BE REQUIRED ONLY IF SUCH CONCEALED INTERFERS WITH NEW CONSTRUCTION.
  7. IF PORTIONS OF CIRCUITS SERVING EQUIPMENT TO REMAIN MUST BE RELOCATED TO NEW LOCATIONS, THE CONTRACTOR SHALL BE RESPONSIBLE FOR THE REMOVAL OF THE EXISTING CIRCUITS AND THE RELOCATION OF THE NEW CIRCUITS. THE CONTRACTOR SHALL BE RESPONSIBLE FOR THE REMOVAL OF THE EXISTING CIRCUITS AND THE RELOCATION OF THE NEW CIRCUITS.
  8. IF WALLS, CEILING, FLOORS, OR EQUIPMENT ARE REMOVED, OR OTHER DEMOLITION OCCURS, WHICH DEVIATES CIRCUITS SERVING EQUIPMENT TO REMAIN, THE CONTRACTOR SHALL BE RESPONSIBLE FOR THE RELOCATION OF THE CIRCUITS TO NEW LOCATIONS. THE CONTRACTOR SHALL BE RESPONSIBLE FOR THE REMOVAL OF THE EXISTING CIRCUITS AND THE RELOCATION OF THE NEW CIRCUITS.
  9. CONTRACTOR SHALL REMOVE ALL EXISTING ELECTRICAL WORK IN THIS AREA UNLESS OTHERWISE NOTED.
  10. DEBRIS OF LAMP, BALLASTS, AND LAMPING FIXTURES REMOVED.
  11. DEBRIS OF LAMP, BALLASTS, AND LAMPING FIXTURES REMOVED.
  12. DEBRIS OF LAMP, BALLASTS, AND LAMPING FIXTURES REMOVED.
  13. DEBRIS OF LAMP, BALLASTS, AND LAMPING FIXTURES REMOVED.
  14. DEBRIS OF LAMP, BALLASTS, AND LAMPING FIXTURES REMOVED.
  15. DEBRIS OF LAMP, BALLASTS, AND LAMPING FIXTURES REMOVED.
  16. DEBRIS OF LAMP, BALLASTS, AND LAMPING FIXTURES REMOVED.
  17. DEBRIS OF LAMP, BALLASTS, AND LAMPING FIXTURES REMOVED.
  18. DEBRIS OF LAMP, BALLASTS, AND LAMPING FIXTURES REMOVED.
  19. DEBRIS OF LAMP, BALLASTS, AND LAMPING FIXTURES REMOVED.
  20. DEBRIS OF LAMP, BALLASTS, AND LAMPING FIXTURES REMOVED.

- GENERAL ELECTRICAL NOTES**
- A. ALL LIGHTING SWITCHES INDICATED SHALL BE REMOVED FOR REPLACEMENT WITH NEW DEVICES.
  - B. INTERCOM SYSTEM - ALL SPEAKERS AND CALL SWITCHES SHALL BE DISCONNECTED AND REMOVED.
  - C. CLOCK SYSTEM - ALL CLOCKS SHALL BE DISCONNECTED AND REMOVED.
  - D. SEE MECHANICAL DRAWING 9-1-1 ON SHEET 9-1-1 FOR REMOVAL OF MECHANICAL EQUIPMENT THAT REQUIRES ELECTRICAL DISCONNECTIONS. VERIFY WITH ELECTRICAL POWER PLANS FOR CIRCUITS TO REMOVAL OR RELOCATION.



**VEAZEY  
PARROTT  
DURKIN &  
SHOULDERS**

ARCHITECTS  
PLANNERS

500 West Street  
Durham, N.C. 27601  
(919) 286-1111

**RENOVATION PROJECT FOR:  
DUNE AND SCHOOL CORP.  
CHESTER HIGH SCHOOL/MIDDLE SCHOOL  
CHESTER, NC 28315**

**DEMOLITION PLAN - UNIT 'D'**

Project No. 940000  
Project Date: JUNE 2000  
Drawn By: EWH  
Approved By: TLM  
Drawing No. E 0.4

19257  
H. DURKIN  
STATE OF  
NORTH CAROLINA  
REGISTERED ARCHITECT

