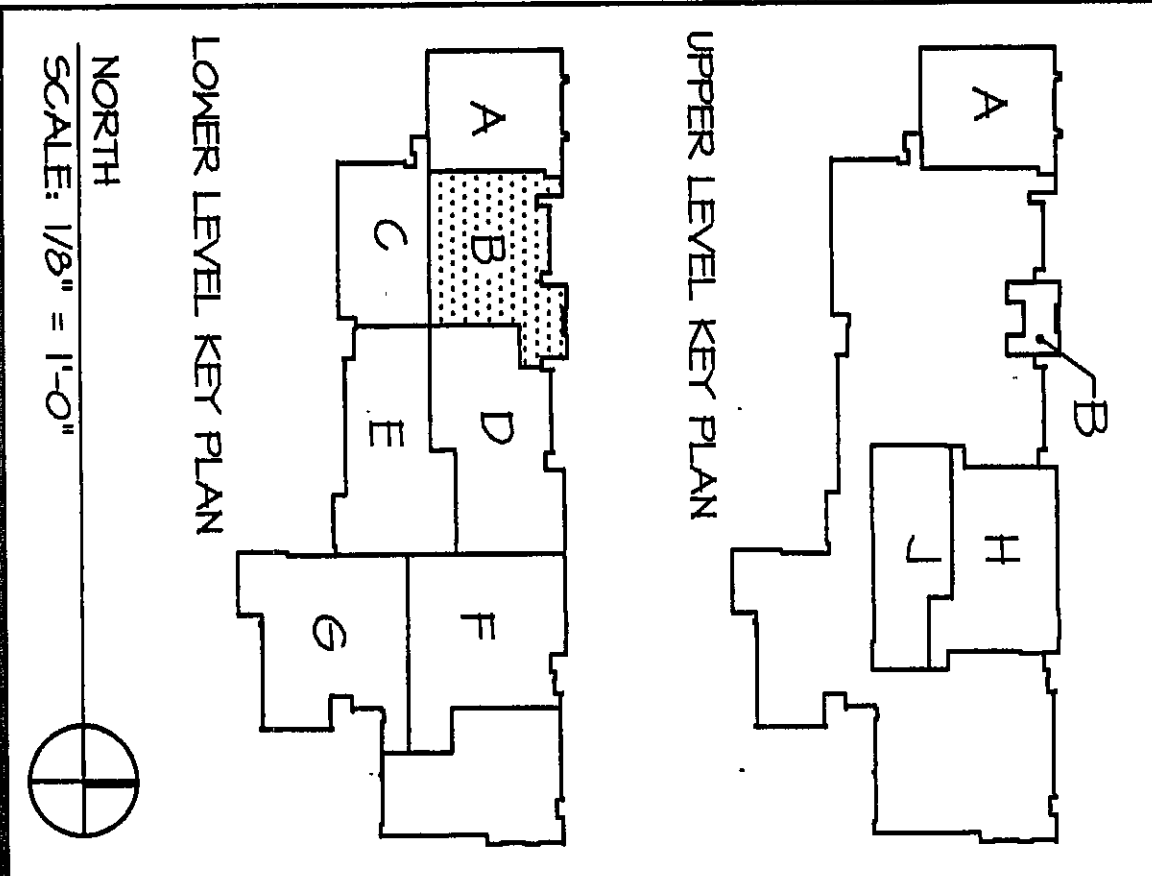
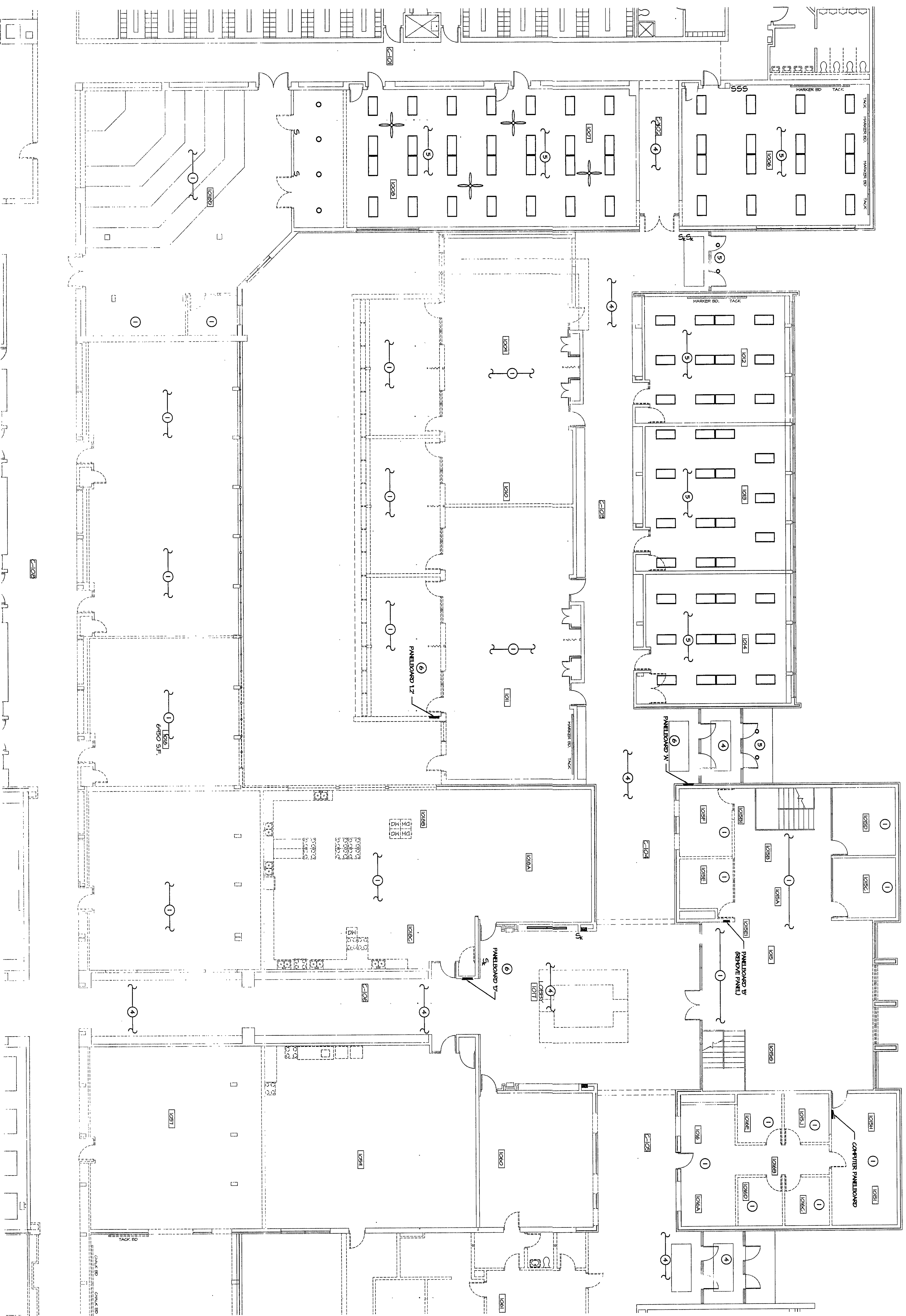


- GENERAL ELECTRICAL REMOVAL NOTES**
1. THE CONTRACTOR SHALL REMOVE ALL ELECTRICAL WORK IN THE AREAS INDICATED BY THE DEMOLITION PLAN. THE CONTRACTOR SHALL BE RESPONSIBLE FOR THE REMOVAL OF ALL ELECTRICAL WORK IN THE AREAS INDICATED BY THE DEMOLITION PLAN. THE CONTRACTOR SHALL BE RESPONSIBLE FOR THE REMOVAL OF ALL ELECTRICAL WORK IN THE AREAS INDICATED BY THE DEMOLITION PLAN.
 2. FOR REMOVAL OF ELECTRICAL WORK, THE CONTRACTOR SHALL BE RESPONSIBLE FOR THE REMOVAL OF ALL ELECTRICAL WORK IN THE AREAS INDICATED BY THE DEMOLITION PLAN. THE CONTRACTOR SHALL BE RESPONSIBLE FOR THE REMOVAL OF ALL ELECTRICAL WORK IN THE AREAS INDICATED BY THE DEMOLITION PLAN.
 3. THE CONTRACTOR SHALL BE RESPONSIBLE FOR THE REMOVAL OF ALL ELECTRICAL WORK IN THE AREAS INDICATED BY THE DEMOLITION PLAN. THE CONTRACTOR SHALL BE RESPONSIBLE FOR THE REMOVAL OF ALL ELECTRICAL WORK IN THE AREAS INDICATED BY THE DEMOLITION PLAN.
 4. ALL ELECTRICAL WORK SHALL BE REMOVED IN SUCH A MANNER THAT THERE IS NO DAMAGE TO THE REMAINING ELECTRICAL SYSTEM. THE CONTRACTOR SHALL BE RESPONSIBLE FOR THE REMOVAL OF ALL ELECTRICAL WORK IN THE AREAS INDICATED BY THE DEMOLITION PLAN.
 5. ALL ELECTRICAL WORK SHALL BE REMOVED IN SUCH A MANNER THAT THERE IS NO DAMAGE TO THE REMAINING ELECTRICAL SYSTEM. THE CONTRACTOR SHALL BE RESPONSIBLE FOR THE REMOVAL OF ALL ELECTRICAL WORK IN THE AREAS INDICATED BY THE DEMOLITION PLAN.
 6. REMOVAL OF ELECTRICAL WORK SHALL BE COMPLETED IN ACCORDANCE WITH THE REQUIREMENTS OF THE NEC. THE CONTRACTOR SHALL BE RESPONSIBLE FOR THE REMOVAL OF ALL ELECTRICAL WORK IN THE AREAS INDICATED BY THE DEMOLITION PLAN.
 7. IF PORTIONS OF CIRCUITS SERVING EQUIPMENT TO BE REMOVED ARE TO REMAIN, THE CONTRACTOR SHALL BE RESPONSIBLE FOR THE REMOVAL OF ALL ELECTRICAL WORK IN THE AREAS INDICATED BY THE DEMOLITION PLAN.
 8. THE CONTRACTOR SHALL BE RESPONSIBLE FOR THE REMOVAL OF ALL ELECTRICAL WORK IN THE AREAS INDICATED BY THE DEMOLITION PLAN. THE CONTRACTOR SHALL BE RESPONSIBLE FOR THE REMOVAL OF ALL ELECTRICAL WORK IN THE AREAS INDICATED BY THE DEMOLITION PLAN.
 9. THE CONTRACTOR SHALL BE RESPONSIBLE FOR THE REMOVAL OF ALL ELECTRICAL WORK IN THE AREAS INDICATED BY THE DEMOLITION PLAN. THE CONTRACTOR SHALL BE RESPONSIBLE FOR THE REMOVAL OF ALL ELECTRICAL WORK IN THE AREAS INDICATED BY THE DEMOLITION PLAN.
 10. THE CONTRACTOR SHALL BE RESPONSIBLE FOR THE REMOVAL OF ALL ELECTRICAL WORK IN THE AREAS INDICATED BY THE DEMOLITION PLAN. THE CONTRACTOR SHALL BE RESPONSIBLE FOR THE REMOVAL OF ALL ELECTRICAL WORK IN THE AREAS INDICATED BY THE DEMOLITION PLAN.



**VEAZEY
PARROTT
&
DURKIN
&
SHOULDERS**

ARCHITECTS
ENGINEERS
PLANNERS

2000 Liberty Way S. Ste.
Indianapolis, IN 46202

**RENOVATION PROJECT FOR:
DUNELAND SCHOOL
CORPORATION
CHERTON MIDDLE SCHOOL
CHERTON, INDIANA**

DEMOLITION PLAN - UNIT 'B'

Drawing Title: _____
Project No: 44400000
Project Date: 06-12-00
Drawn By: _____
Approved By: _____
Drawing No: _____

E 0.2