

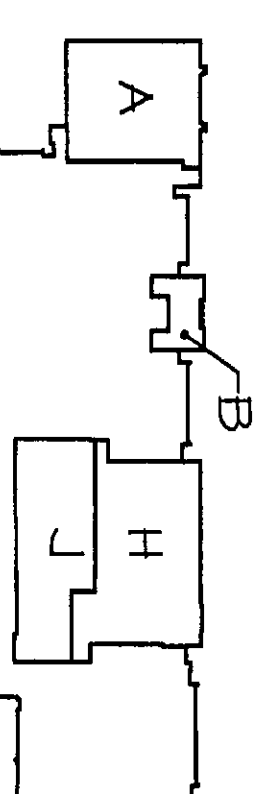
- BETRIEVAL NOTES**
1. DISCONNECT AND REMOVE LIGHTING FIXTURES (A) LIGHTING FIXTURES.
 2. SEE BIDDING DRAWING ON SITE E-01 & E-02 FOR DEMOLITION WORK REQUIRED ON EXISTING PANEL BOARDS, DISTRIBUTION PANELS AND SWITCHBOARDS.
 3. DISCONNECT AND REMOVE LIGHTING FIXTURES.
 4. DISCONNECT AND REMOVE ALL LIGHTING FIXTURES, SEE BIDDING DRAWING ON SITE E-01 & E-02 FOR DEMOLITION WORK REQUIRED ON EXISTING PANEL BOARDS, DISTRIBUTION PANELS AND SWITCHBOARDS.
 5. CONTROL CONDUITS (C-1) SHALL BE REMOVED.
 6. DISCONNECT CIRCUIT FOR MECHANICAL EQUIPMENT, CIRCUIT TO BE REMOVED FOR CONNECTION TO NEW EQUIPMENT.

- GENERAL ELECTRICAL REMOVAL NOTES**
1. THE CONTRACTOR SHALL BE RESPONSIBLE FOR VERIFYING THE EXISTING CONDUIT AND WIRE TO BE REMOVED. THE CONTRACTOR SHALL BE RESPONSIBLE FOR THE REMOVAL OF THE EXISTING CONDUIT AND WIRE TO BE REMOVED. THE CONTRACTOR SHALL BE RESPONSIBLE FOR THE REMOVAL OF THE EXISTING CONDUIT AND WIRE TO BE REMOVED.
 2. FOR FURTHER INFORMATION WITH REGARD TO THE EXISTING CONDUIT AND WIRE TO BE REMOVED, THE CONTRACTOR SHALL CONSULT THE BIDDING DRAWING ON SITE E-01 & E-02.
 3. CONTRACTOR SHALL BE RESPONSIBLE FOR ALL REMOVAL OF EXISTING CONDUIT AND WIRE TO BE REMOVED. THE CONTRACTOR SHALL BE RESPONSIBLE FOR THE REMOVAL OF THE EXISTING CONDUIT AND WIRE TO BE REMOVED.
 4. ALL EQUIPMENT REMOVED FOR RELOCATION SHALL BE REMOVED IN SUCH A MANNER THAT THERE IS NO DAMAGE TO THE REMAINING EQUIPMENT.
 5. ALL CONDUIT RIGS TO REMOVED EQUIPMENT SHALL HAVE ALL WIRING REMOVED. IT IS THE CONTRACTOR'S RESPONSIBILITY TO REMOVE ALL WIRING IS POSSIBLE.
 6. REMOVAL OF EXISTING EQUIPMENT TO BE REMOVED SHALL BE REMOVED IN SUCH A MANNER THAT THERE IS NO DAMAGE TO THE REMAINING EQUIPMENT.
 7. IF PORTIONS OF EXISTING EQUIPMENT TO BE REMOVED ARE TO BE RELOCATED, THE CONTRACTOR SHALL BE RESPONSIBLE FOR THE RELOCATION OF THE EQUIPMENT. THE CONTRACTOR SHALL BE RESPONSIBLE FOR THE RELOCATION OF THE EQUIPMENT.
 8. IF WALLS, CEILING, FLOORS, OR EQUIPMENT ARE TO BE REMOVED, THE CONTRACTOR SHALL BE RESPONSIBLE FOR THE REMOVAL OF THE EXISTING CONDUIT AND WIRE TO BE REMOVED. THE CONTRACTOR SHALL BE RESPONSIBLE FOR THE REMOVAL OF THE EXISTING CONDUIT AND WIRE TO BE REMOVED.
 9. IF THE CONTRACTOR IS TO BE RESPONSIBLE FOR THE REMOVAL OF THE EXISTING CONDUIT AND WIRE TO BE REMOVED, THE CONTRACTOR SHALL BE RESPONSIBLE FOR THE REMOVAL OF THE EXISTING CONDUIT AND WIRE TO BE REMOVED.
 10. DISPOSAL OF LAMPS AND BALLASTS.
 11. DISPOSAL OF QUANTITY AND TYPE OF LAMPS, BALLASTS, AND LIGHTING FIXTURES REMOVED.
 12. REMOVAL AND DISPOSAL OF BALLASTS AND LAMPS.
 13. CONTRACTOR SHALL BE RESPONSIBLE FOR THE REMOVAL OF THE EXISTING CONDUIT AND WIRE TO BE REMOVED. THE CONTRACTOR SHALL BE RESPONSIBLE FOR THE REMOVAL OF THE EXISTING CONDUIT AND WIRE TO BE REMOVED.
 14. CONTRACTOR SHALL BE RESPONSIBLE FOR THE REMOVAL OF THE EXISTING CONDUIT AND WIRE TO BE REMOVED. THE CONTRACTOR SHALL BE RESPONSIBLE FOR THE REMOVAL OF THE EXISTING CONDUIT AND WIRE TO BE REMOVED.
 15. CONTRACTOR SHALL BE RESPONSIBLE FOR THE REMOVAL OF THE EXISTING CONDUIT AND WIRE TO BE REMOVED. THE CONTRACTOR SHALL BE RESPONSIBLE FOR THE REMOVAL OF THE EXISTING CONDUIT AND WIRE TO BE REMOVED.
 16. CONTRACTOR SHALL BE RESPONSIBLE FOR THE REMOVAL OF THE EXISTING CONDUIT AND WIRE TO BE REMOVED. THE CONTRACTOR SHALL BE RESPONSIBLE FOR THE REMOVAL OF THE EXISTING CONDUIT AND WIRE TO BE REMOVED.
 17. CONTRACTOR SHALL BE RESPONSIBLE FOR THE REMOVAL OF THE EXISTING CONDUIT AND WIRE TO BE REMOVED. THE CONTRACTOR SHALL BE RESPONSIBLE FOR THE REMOVAL OF THE EXISTING CONDUIT AND WIRE TO BE REMOVED.
 18. CONTRACTOR SHALL BE RESPONSIBLE FOR THE REMOVAL OF THE EXISTING CONDUIT AND WIRE TO BE REMOVED. THE CONTRACTOR SHALL BE RESPONSIBLE FOR THE REMOVAL OF THE EXISTING CONDUIT AND WIRE TO BE REMOVED.
 19. CONTRACTOR SHALL BE RESPONSIBLE FOR THE REMOVAL OF THE EXISTING CONDUIT AND WIRE TO BE REMOVED. THE CONTRACTOR SHALL BE RESPONSIBLE FOR THE REMOVAL OF THE EXISTING CONDUIT AND WIRE TO BE REMOVED.
 20. CONTRACTOR SHALL BE RESPONSIBLE FOR THE REMOVAL OF THE EXISTING CONDUIT AND WIRE TO BE REMOVED. THE CONTRACTOR SHALL BE RESPONSIBLE FOR THE REMOVAL OF THE EXISTING CONDUIT AND WIRE TO BE REMOVED.

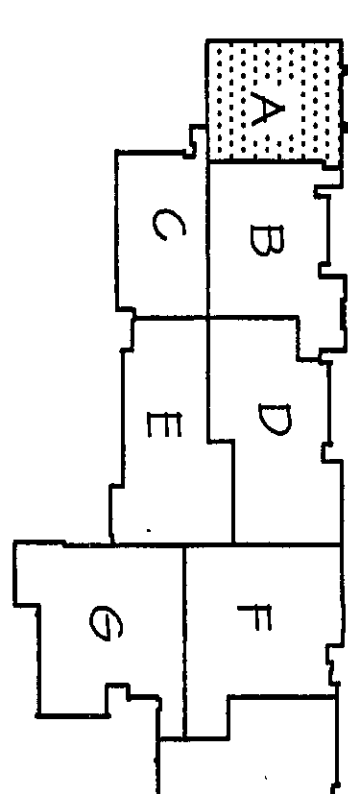
GENERAL ELECTRICAL NOTES

1. UNLESS INDICATED AS NOTE #1 OR NOTE #2, ALL LIGHTING FIXTURES IN THIS AREA SHALL REMAIN. CONTRACTOR SHALL REMOVE THE LAMPS, BALLASTS AND LBS FOR REPLACEMENT.
2. ALL LIGHTING SWITCHES INDICATED SHALL BE REMOVED FOR REPLACEMENT WITH NEW DEVICES.
3. INTERCOM SYSTEM - ALL SEWERS AND CALL SWITCHES SHALL BE DISCONNECTED AND REMOVED.
4. SEE MECHANICAL DEMOLITION DRAWING E-01 & E-02 FOR MECHANICAL EQUIPMENT THAT REMAINS. VERIFY WITH ELECTRICAL POWER PLANS FOR CIRCUITS TO REMAIN FOR RECONNECTION.
5. CLOCK SYSTEM - ALL CLOCKS SHALL BE DISCONNECTED AND REMOVED.

UPPER LEVEL KEY PLAN



LOWER LEVEL KEY PLAN



NORTH

SCALE: 1/8" = 1'-0"

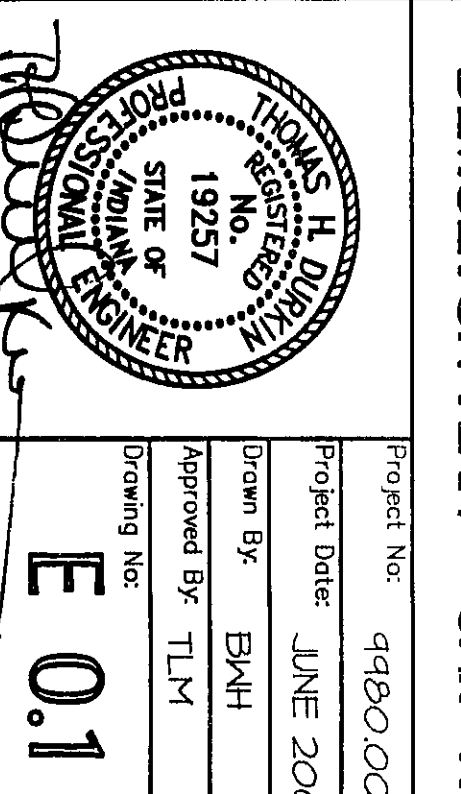
**VEAZEY
PARROTT
DURKIN &
SHOULDERS**

ARCHITECTS
ENGINEERS
PLANNERS

**RENOVATION PROJECT FOR:
DUNE AND SCHOOL CORP.
CHESTER HIGH SCHOOL/MIDDLE SCHOOL
CHESTER, NDANA**

DEMOLITION PLAN - UNIT 'A'

Project No: 0180000
Project Date: JUNE 2000
Drawn By: BWH
Approved By: TLM
Drawing No: E 0.1



2000-E-04