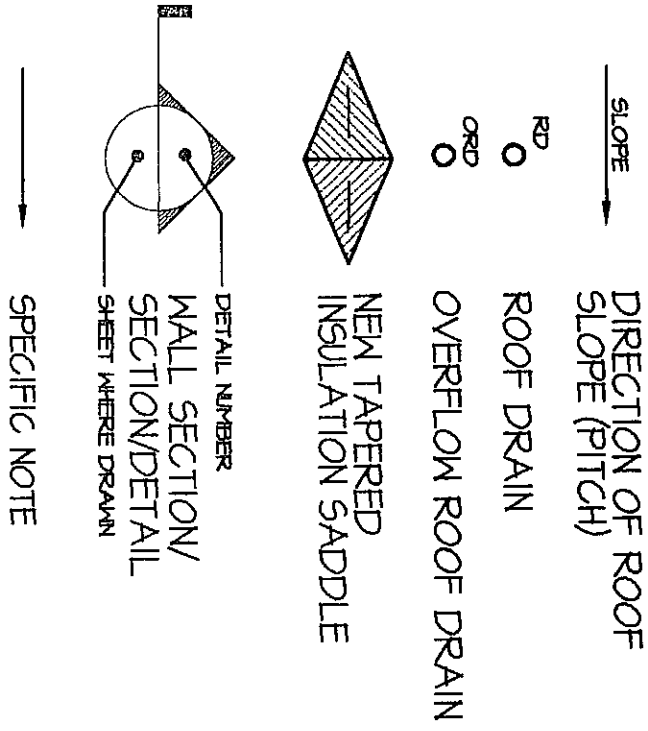
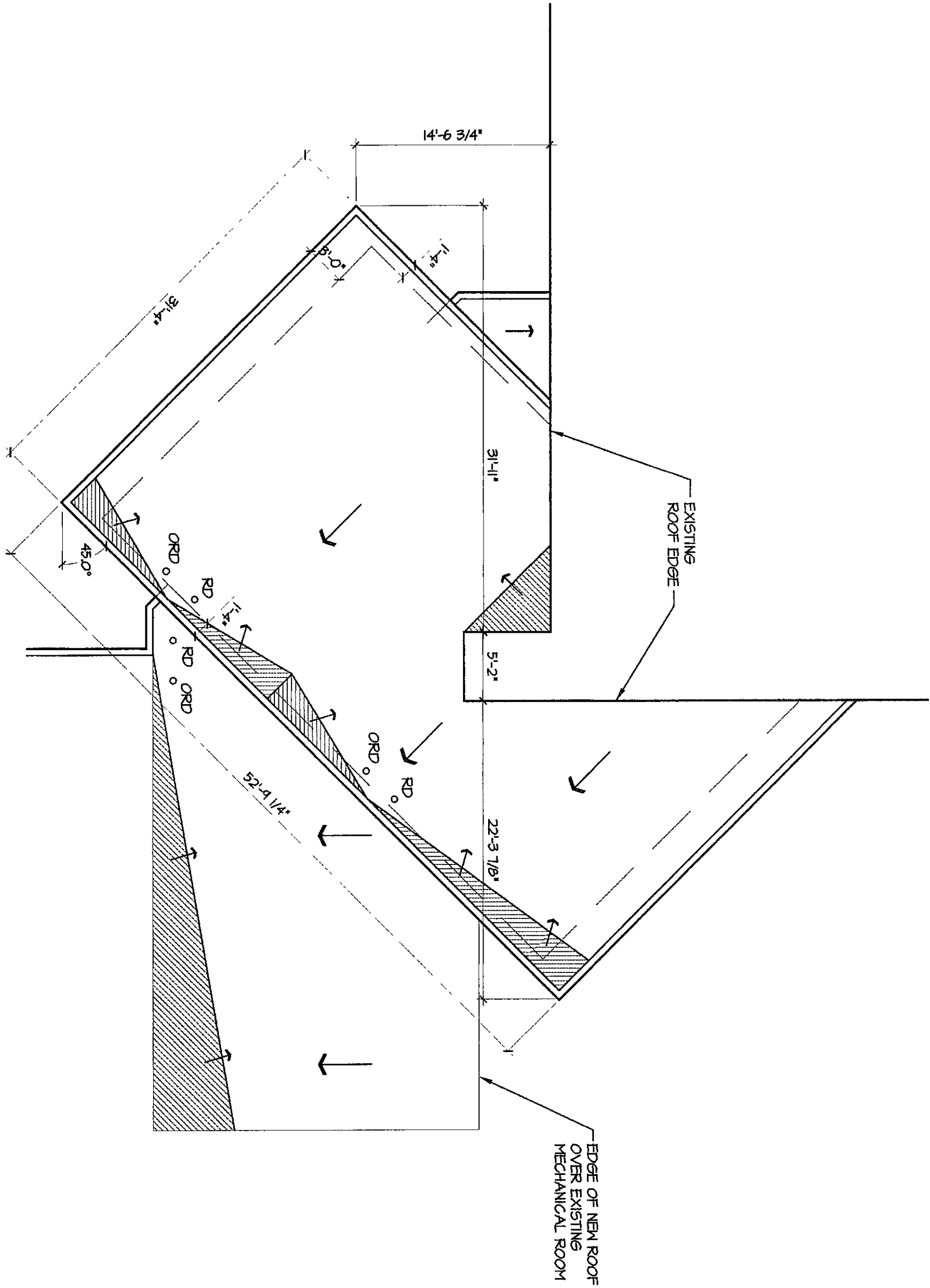


ROOF PLAN LEGEND:



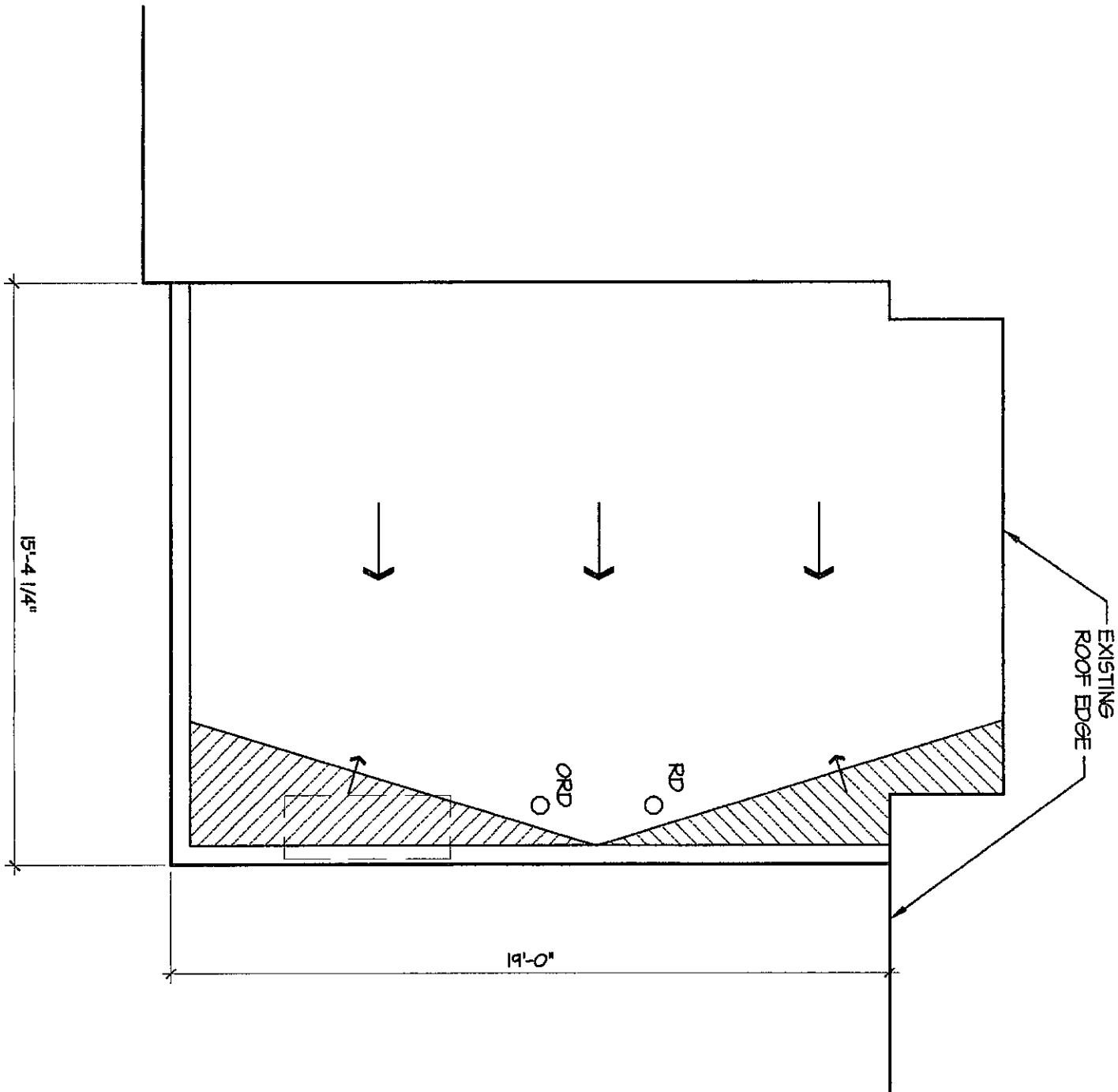
ROOF PLAN GENERAL NOTES:

1. ROOF SYSTEM SLOPES WITH STEEL - TYP. SEE INFORMATION ON STRUCTURAL DRAWINGS.
2. PROVIDE MINIMAL SLOPED INSULATION AS REQUIRED MAX 1/8" SLOPE PER FOOT, UNLESS NOTED OTHERWISE.
3. SEE SPECIFICATIONS AND ASSOCIATED DRAWINGS AND DETAILS FOR FURTHER INFORMATION.



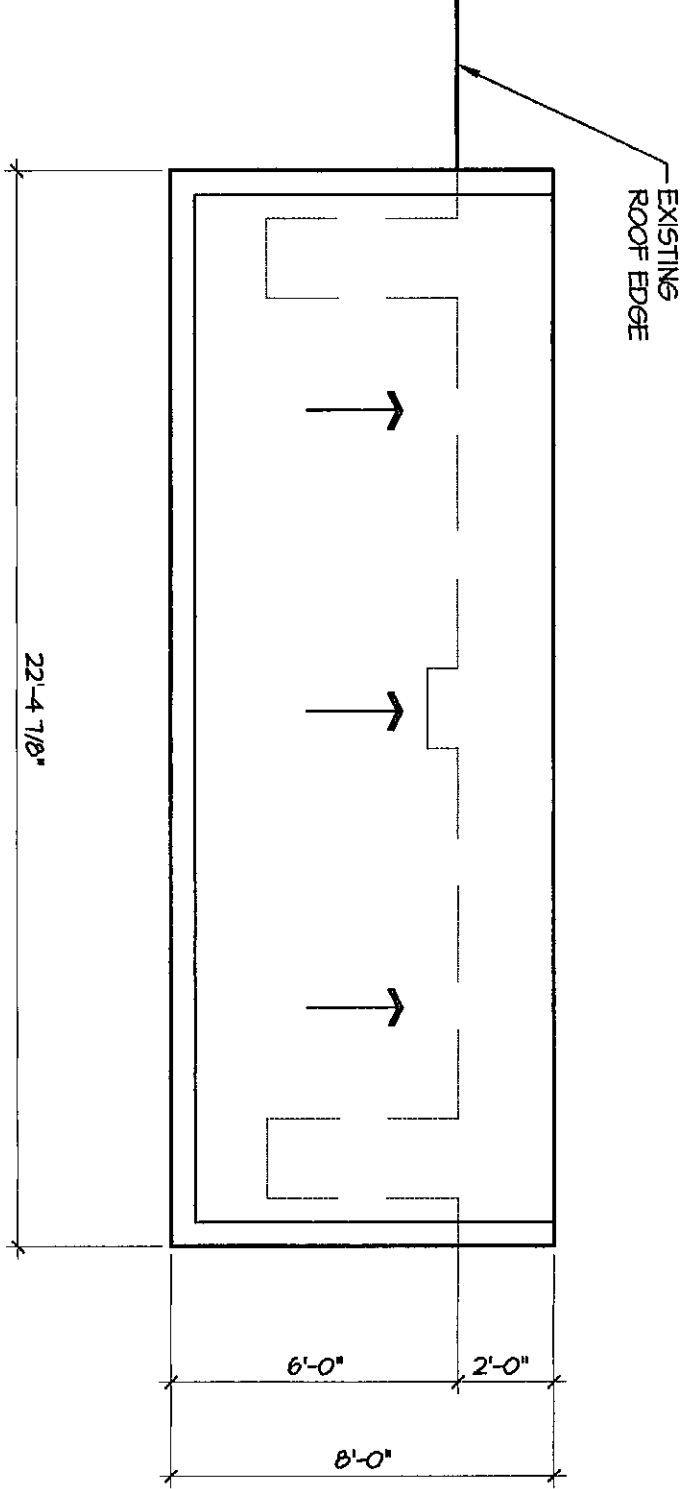
ALTERNATE SOUTHWEST
ENTRY ROOF PLAN

ALTERNATE I
UNIT A
SCALE: 1/8" = 1'-0"



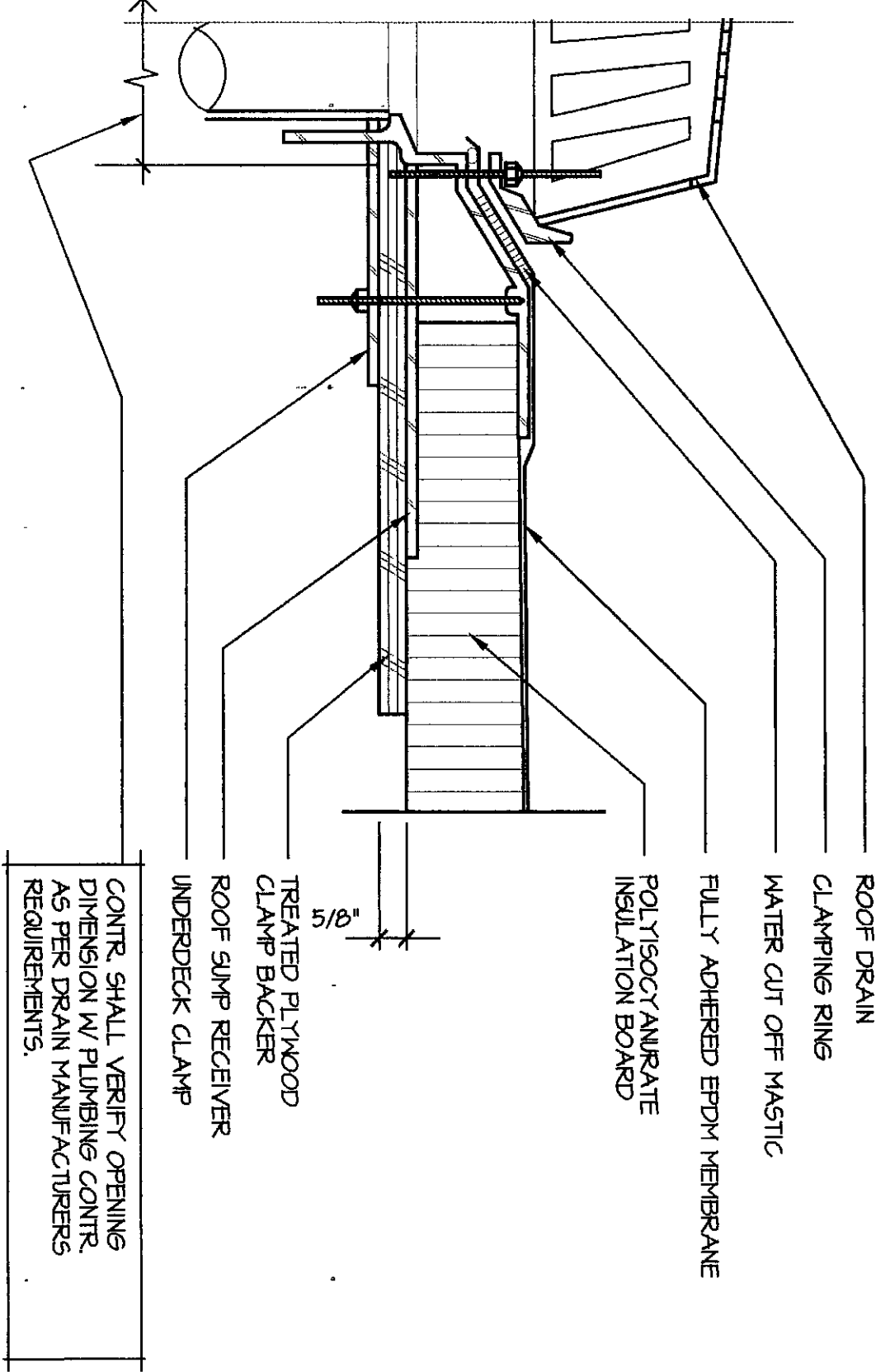
SOUTHCENTRAL
ENTRY ROOF PLAN

ALTERNATE II
UNIT B
SCALE: 1/4" = 1'-0"



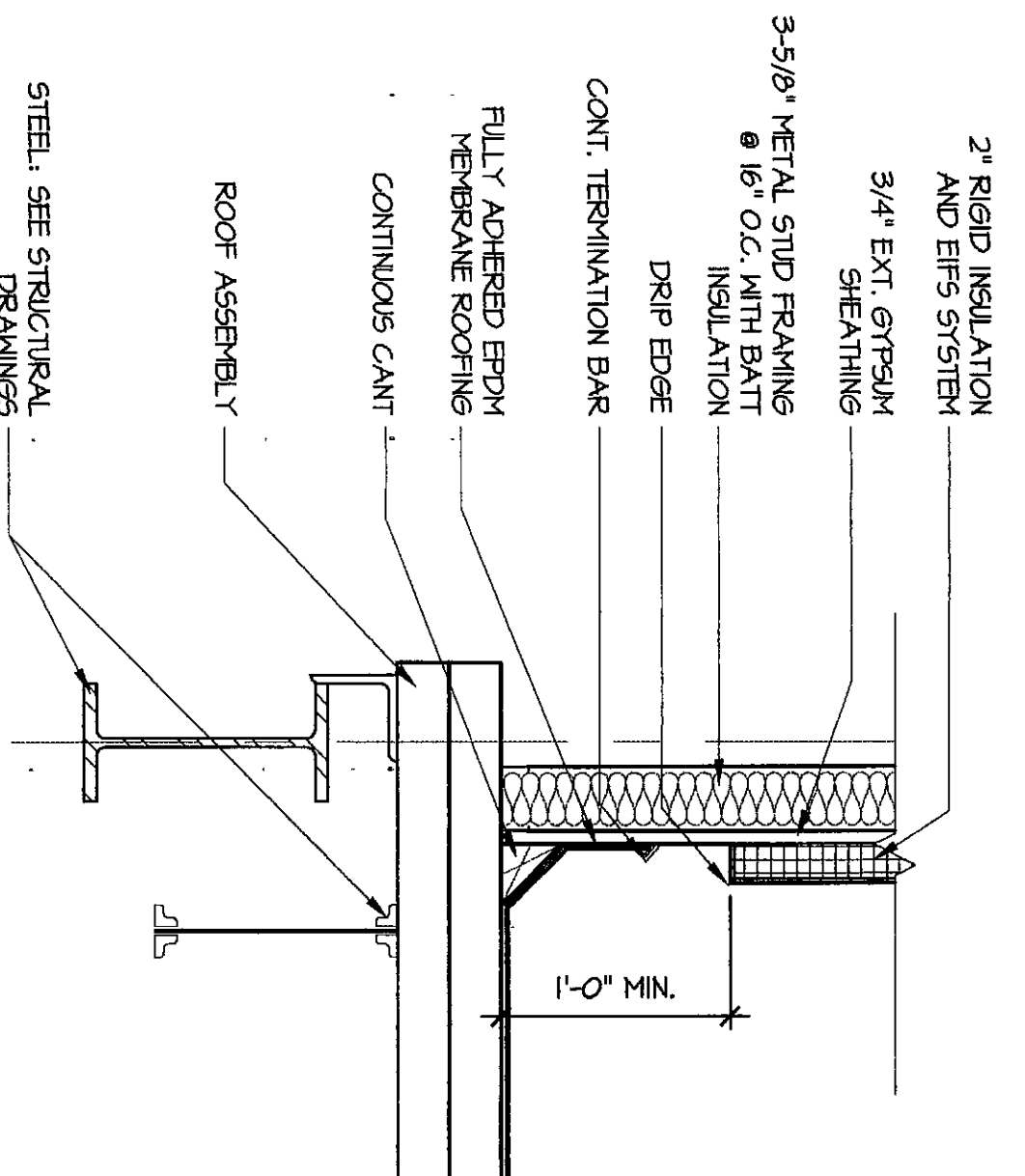
ALTERNATE SOUTH
ENTRY ROOF PLAN

ALTERNATE II
UNIT B
SCALE: 1/4" = 1'-0"



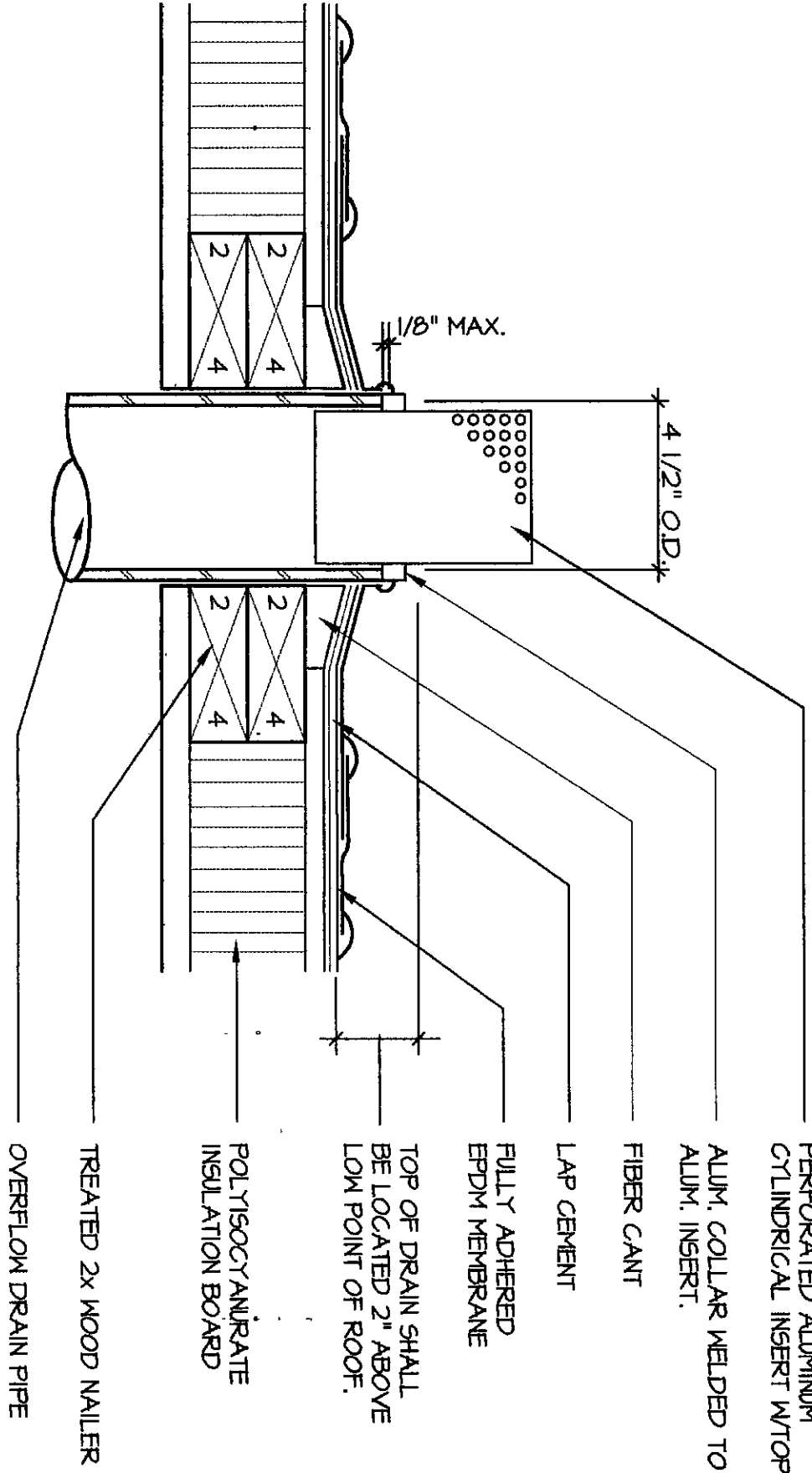
ROOF DETAIL

SCALE: NOT TO SCALE



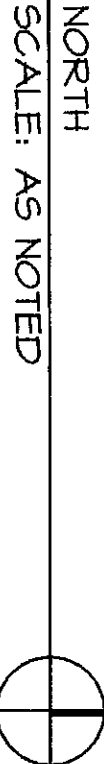
ROOF DETAIL

SCALE: NOT TO SCALE



ROOF DETAIL

SCALE: NOT TO SCALE



ARCHITECTS
ENGINEERS
PLANNERS

VEAZEY
PARROTT
&
DURKIN
&
SHOULDERS

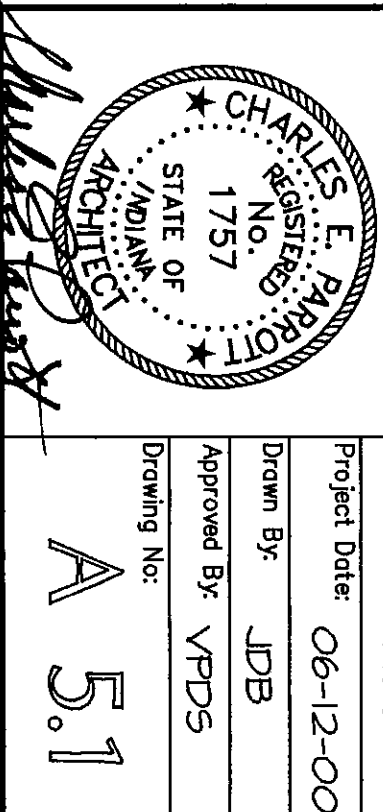
3000 Twenty-Nine Way S. 1st
Floor
Indianapolis, IN 46260

RENOVATION PROJECT FOR:
DUNELAND SCHOOL
CORPORATION
CHESTERTON MIDDLE SCHOOL
CHESTERTON, INDIANA

ROOF PLANS AND DETAILS

Drawing Title:

Project No: 990000
Project Date: 06-12-00
Drawn By: JPB
Approved By: VPDS
Drawing No: A 5.1



2000-A-39