

GENERAL CEILING

NOTES:

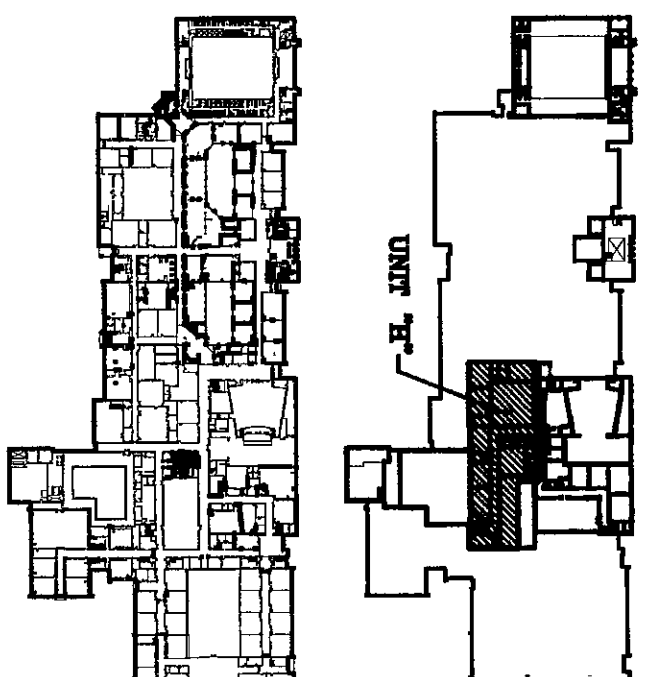
1. INSTALL CEILING AT HEIGHT NOTED, AND IF NOT NOTED
- A. IN CLASSROOMS WHERE CEILING IS TO BE REPLACED, INSTALL NEW CEILING HEIGHT AT SAME HEIGHT AS EXISTING
- B. IN CORRIDORS, HOLD CEILING AS CLOSE TO STRUCTURE AS POSSIBLE. COORDINATE WITH SIDE WALL FINISHES. HEIGHT OF NEW CEILING IS TYPICALLY HIGHER THAN EXISTING.
2. NOTES INDICATED AS "A,B,C OR D" ARE INDICATING TRUSS TYPES. SEE DETAILS ON SHEET A4.1 FOR TRUSS DETAILS AND INFORMATION.

REFLECTED CEILING LEGEND:	
	2x2 ACoustICAL CEILING SYSTEM
	PAINTED GYPSUM BOARD
	SOLID ATTENUATION BATTS TO DECK
	3-5/8\"/>
	5/8\"/>
	HOLLOW METAL FRAME
	MECHANICAL PIPES

BASE AND CONDITIONS FOR ALTERNATES ARE DISCLOSED ON SHEETS A4.1 & A4.2 ALONG WITH REBIDDED DETAILS. THE BALANCE OF THE ARCHITECTURAL DRAWINGS INCLUDE ADD ALTERNATE CONDITIONS. ALTERNATES ARE INDICATED AS FOLLOWS:

INDICATES NEW MATERIAL  
INDICATES EXISTING MATERIAL

KEY PLAN:



NORTH  
SCALE: 1/8\"/>

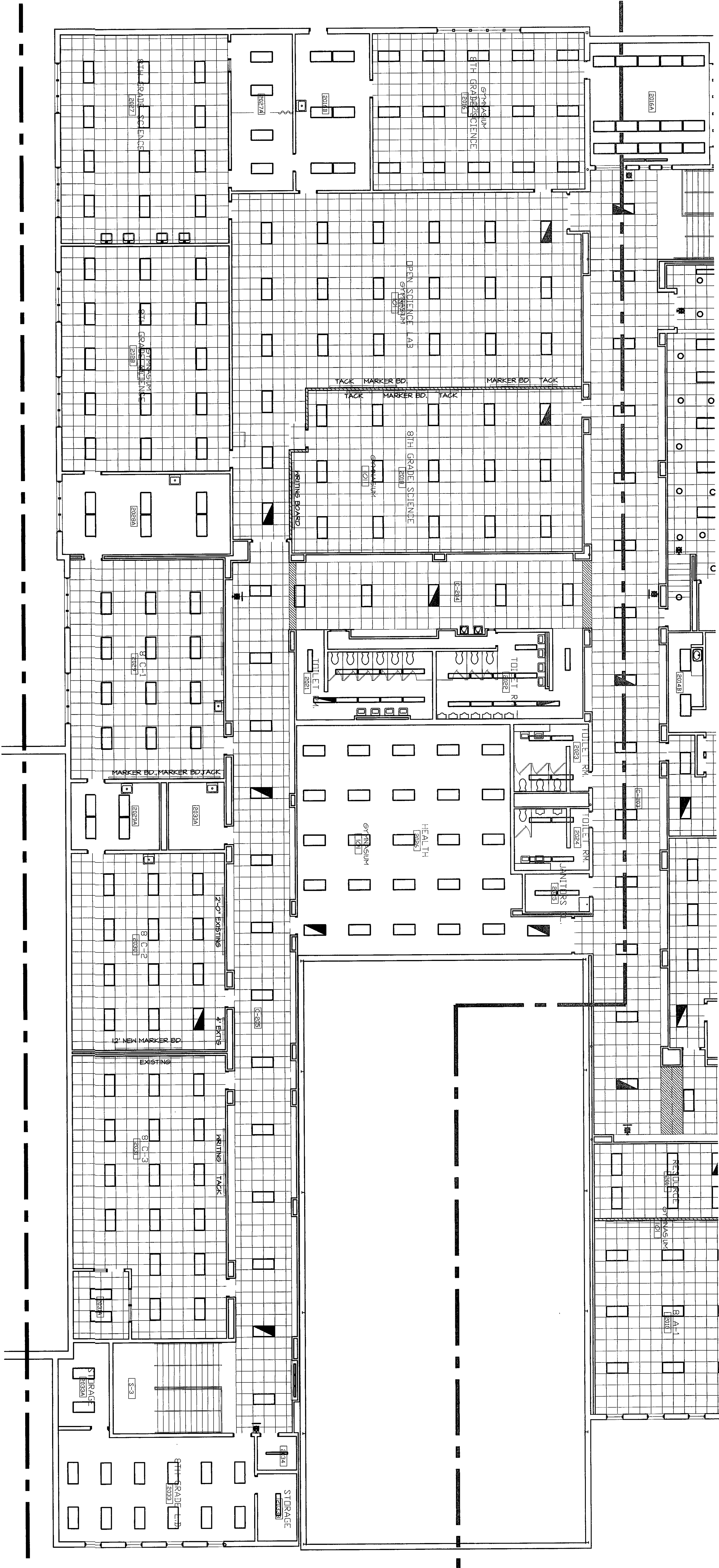
ARCHITECTS  
ENGINEERS  
PLANNERS

VEAZEY  
PARROTT  
DURKIN  
&  
SHOULDERS

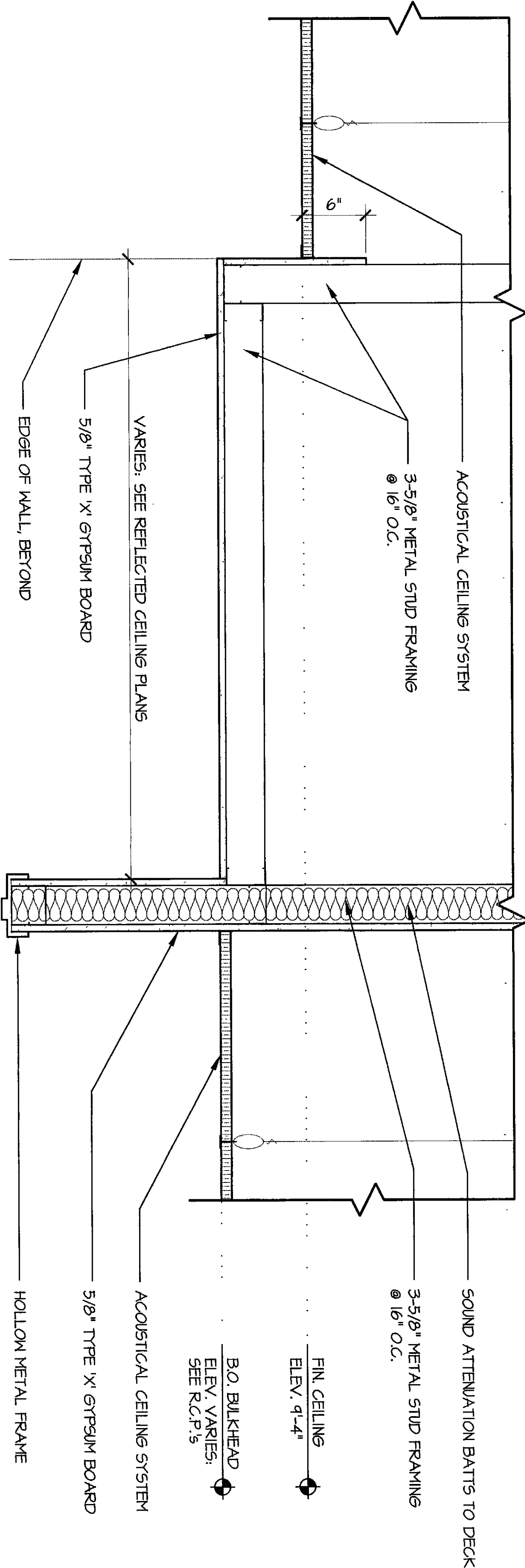
RENOVATION PROJECT FOR:  
DUNELAND SCHOOL  
CORPORATION  
CHESTERTON MIDDLE SCHOOL  
CHESTERTON, INDIANA

Drawing Title:  
REFLECTED CEILING PLAN (UNIT 1H)

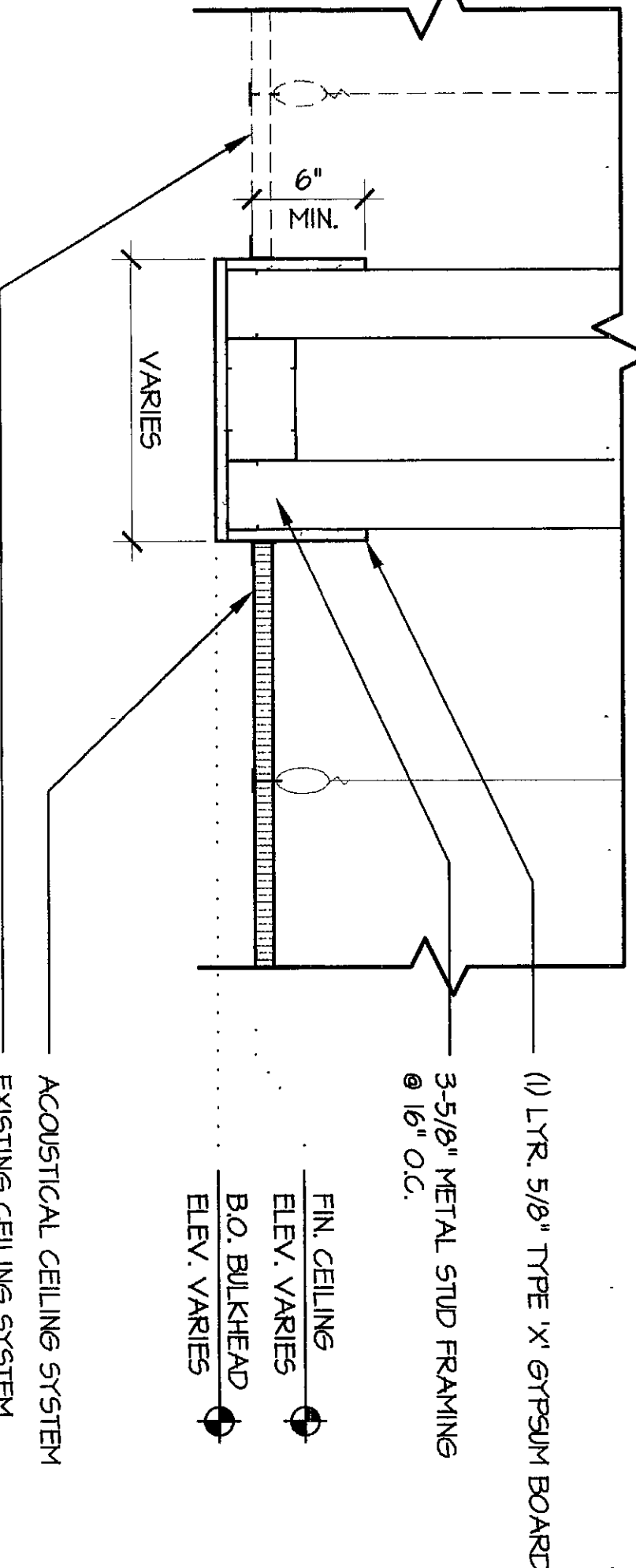
Project No.	9490000
Drawn By	JPB/CKB
Approved By	VFD/S
Drawing No.	A 4.8



REFLECTED CEILING PLAN  
SCALE: 1/8\"/>



CEILING DETAIL  
SCALE: 1/2\"/>



CEILING DETAIL  
SCALE: 1/2\"/>

