

GENERAL CEILING

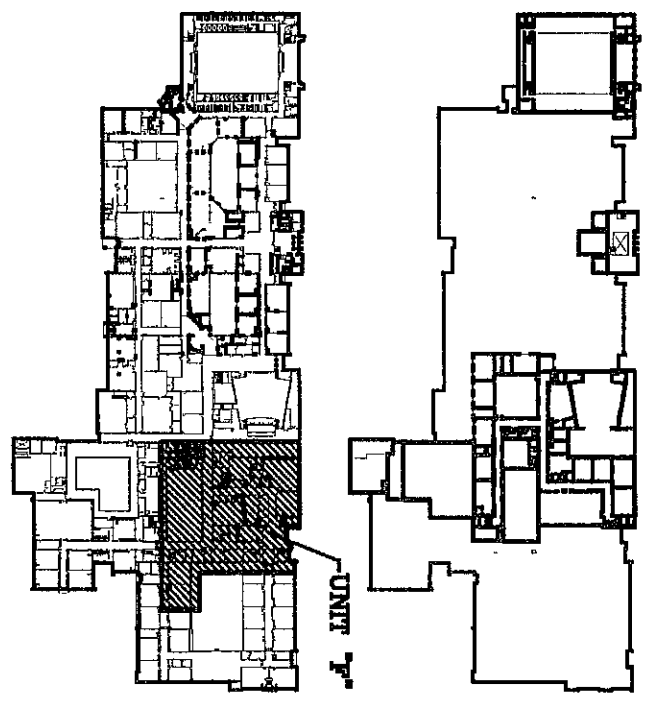
NOTES:

1. INSTALL CEILING AT HEIGHT NOTED, AND IF NOT NOTED
2. NOTES INDICATED AS 'A,B,C OR D' ARE INDICATING TRUSS TYPES. SEE DETAILS ON SHEET A4.1 FOR TRUSS DETAILS AND INFORMATION.

REFLECTED CEILING LEGEND:	
	2x4 ACOUSTICAL CEILING SYSTEM
	PAINTED GYPSUM BOARD CEILING
	ACOUSTICAL TILE
	MECHANICAL TRUSS

BASE BID CONDITIONS FOR ALTERNATES ARE DESCRIBED ON SHEETS A4.1 & A4.2 ALONG WITH THE PROJECT DESCRIPTION. THE PROJECT DESCRIPTION INCLUDES ALTERNATE CONDITIONS. ALTERNATES ARE INDICATED AS FOLLOWS:

KEY PLAN



NORTH  
SCALE: 1/8" = 1'-0"

ARCHITECTS  
ENGINEERS  
PLANNERS

VEAZEY  
PARROTT  
DURKIN &  
SHOULDERS

RENOVATION PROJECT FOR:  
DUNELAND SCHOOL  
CORPORATION  
CRESTHORN MIDDLE SCHOOL  
CRESTHORN, INDIANA

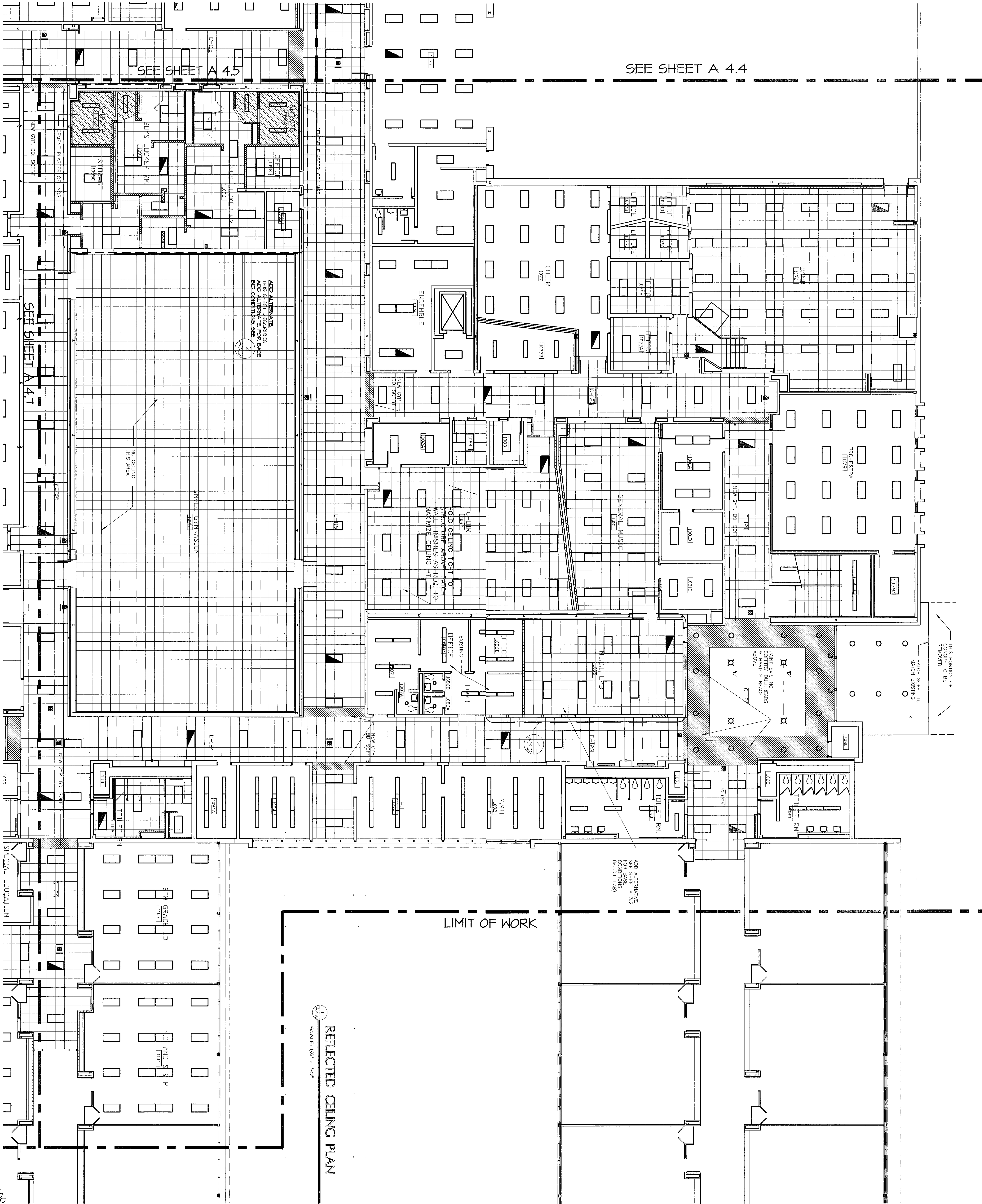
Drawing Title:  
REFLECTED CEILING PLAN (UNIT 'F')

Project No.: 040000  
Project Date: 06-12-00  
Drawn By: JPB/DEB  
Approved By: VPS  
Drawing No.: A 4.6

REFLECTED CEILING PLAN

SCALE: 1/8" = 1'-0"

LIMIT OF WORK



SEE SHEET A 4.4

SEE SHEET A 4.5

SEE SHEET A 4.7

2000-4-33