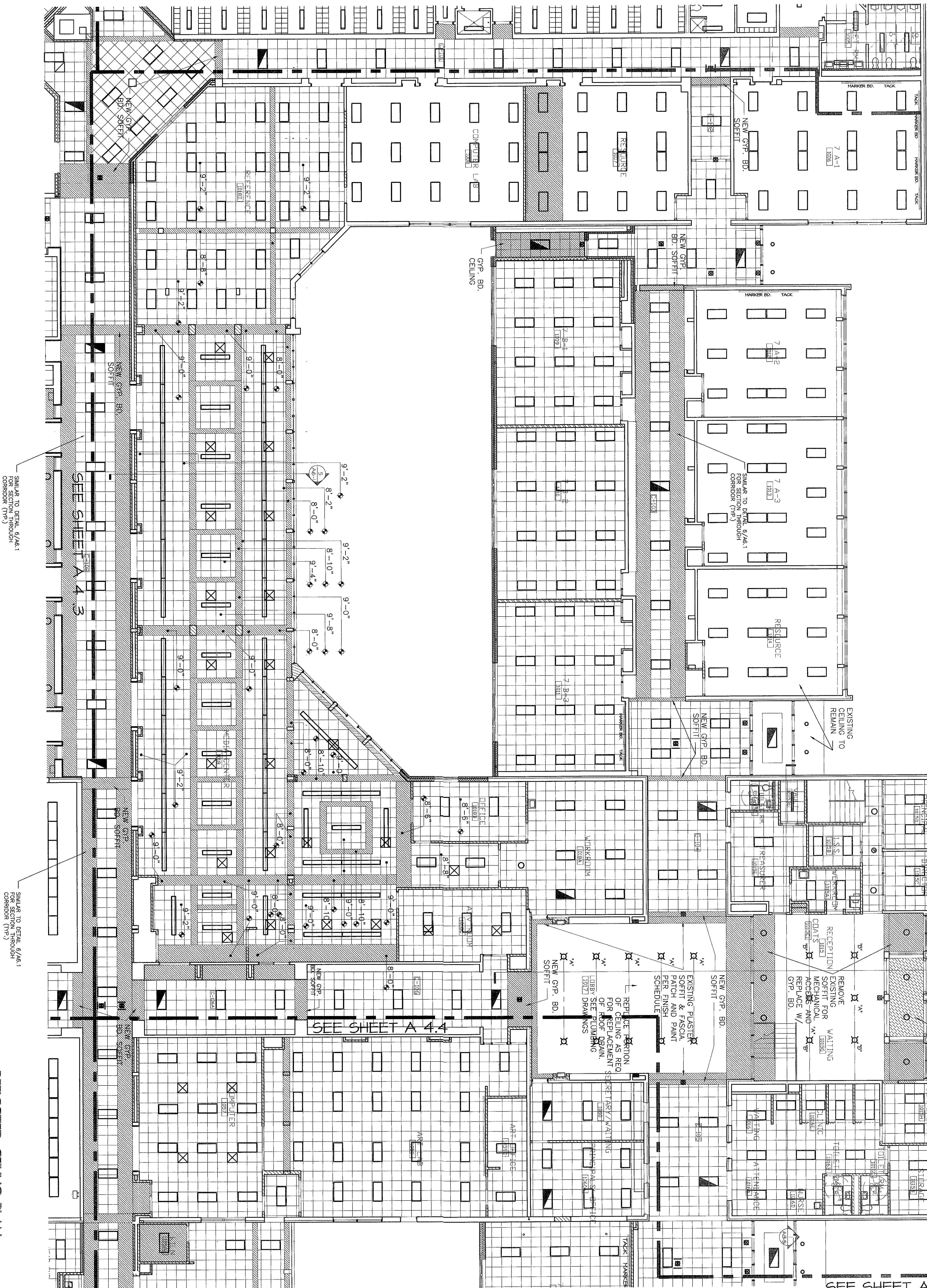


NOTE: CEILINGS AT MEZANINES ABOVE TO REMAIN AS IS

NEW CEMENT PLASTER AT ENTRY AIRLOCK



REFLECTED CEILING PLAN
SCALE 1/8" = 1'-0"

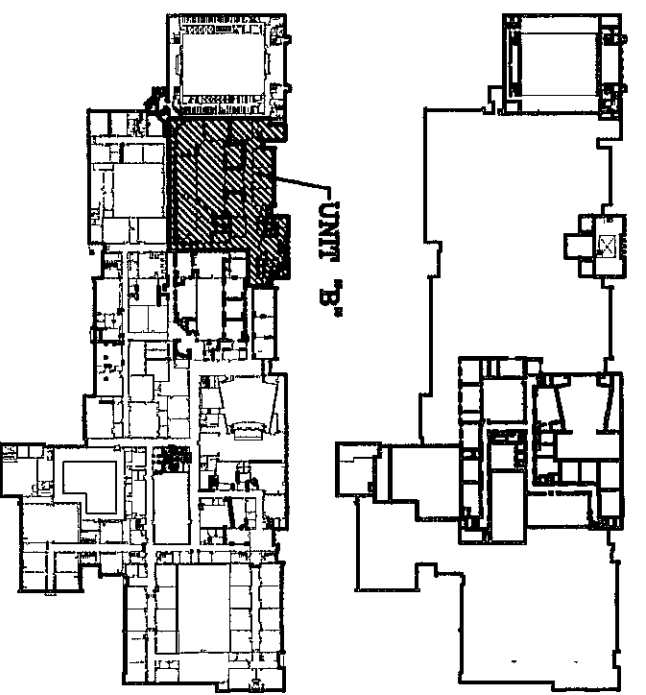
GENERAL CEILING NOTES:

1. INSTALL CEILING AT HEIGHT NOTED, AND IF NOT NOTED
2. NOTES INDICATED AS "ABC OR D" ARE INDICATING TRUSS TYPES. SEE DETAILS ON SHEET A4.1 FOR TRUSS DETAILS AND INFORMATION.

REFLECTED CEILING LEGEND:	
	2x2 ACOUSTICAL CEILING SYSTEM
	PAINTED GYPSUM BOARD CEILING SYSTEM
	PLYWOOD AND LATH CEILING SYSTEM
	ACOUSTICAL TILES
	MECHANICAL TRUSSES

BASE BD CONDITIONS FOR ALTERNATES ARE DESCRIBED ON SHEETS A4.1 & A4.2 ALONG WITH REFLECTED CEILING DATA. THE BALANCE OF THE DRAWING IS TO BE CONSIDERED AS INDICATED AS FOLLOWS:

KEY PLAN:



NORTH
SCALE: 1/8" = 1'-0"

VEAZEY
PARROTT
DURKIN
&
SHOULDERS

ARCHITECTS
ENGINEERS
PLANNERS

RENOVATION PROJECT FOR:
DUNELAND SCHOOL
CORPORATION
CHESTERTON, INDIANA

REFLECTED CEILING PLAN (UNIT 'B')

Project No: 0400.00
Project Date: 06-12-00
Drawn By: JDB/DCB
Approved By: VFD
Drawing No: A 4.2