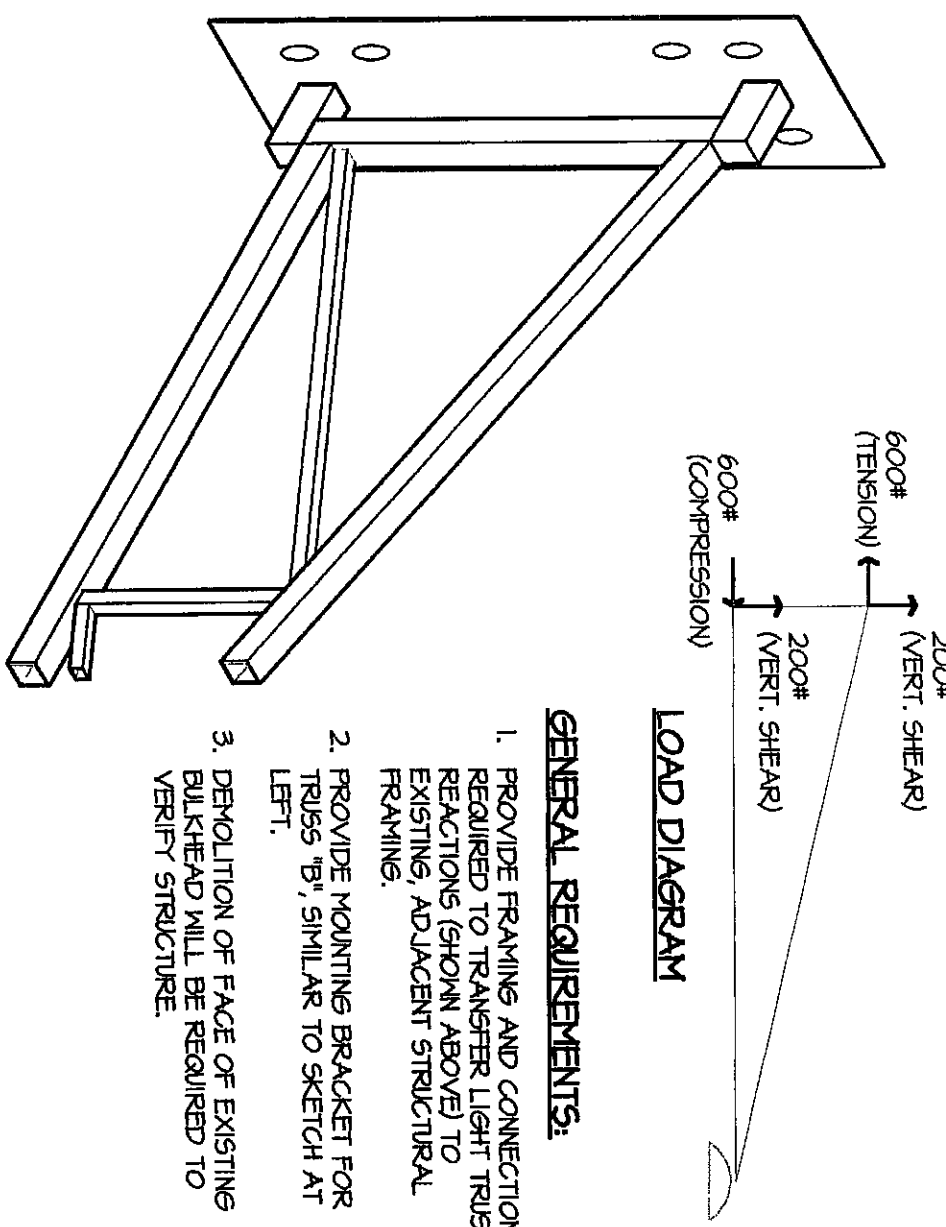
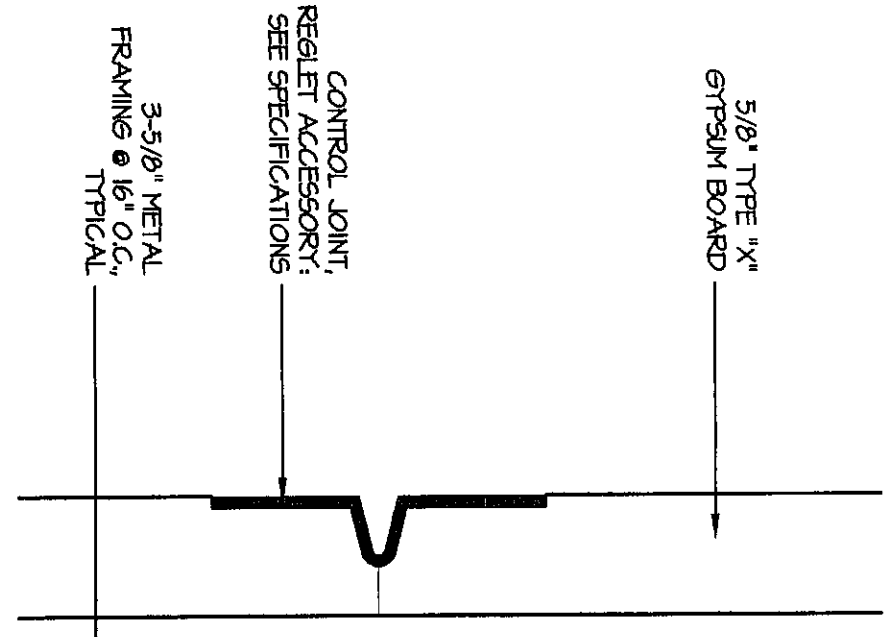


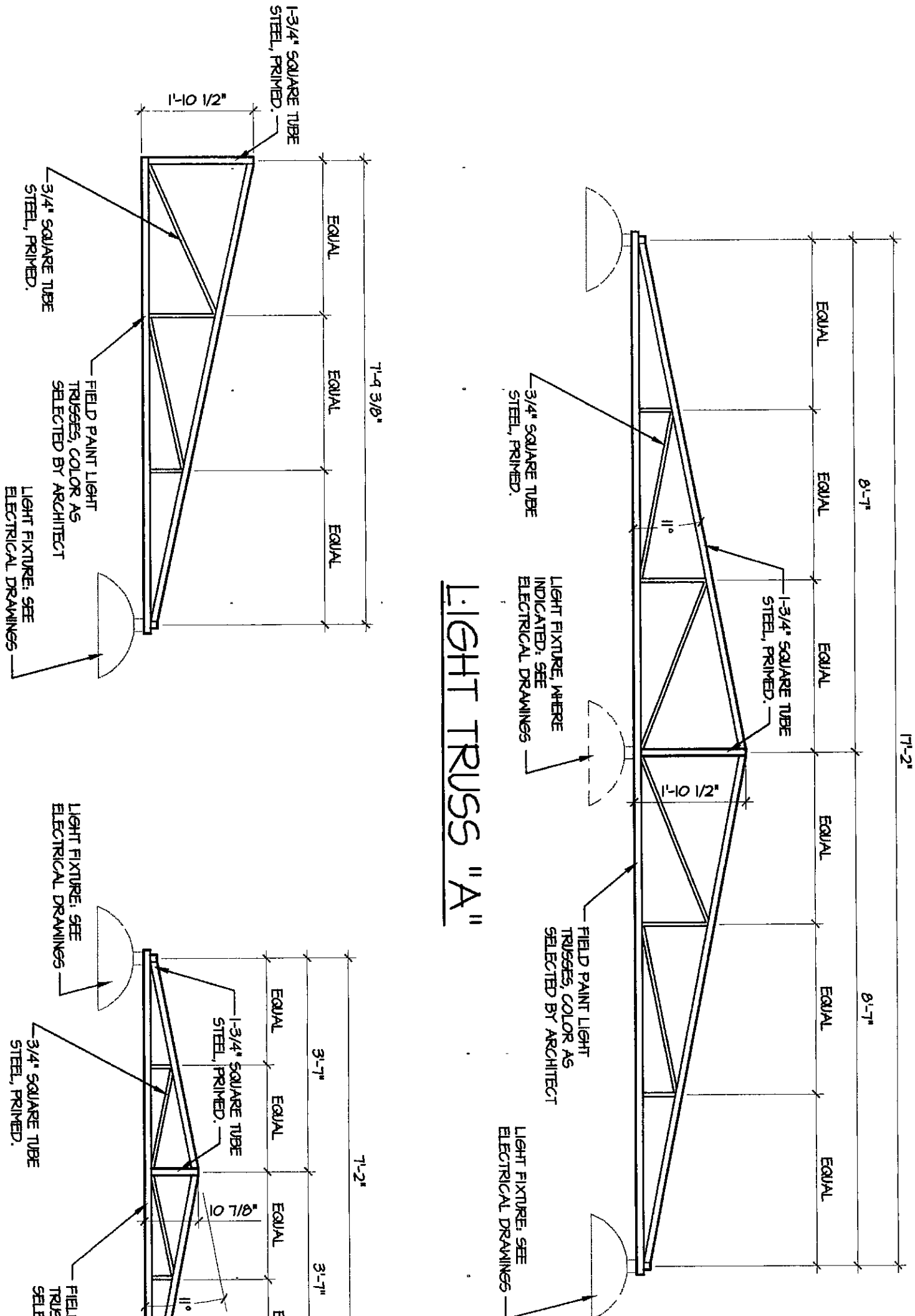
2
SCALE: 1/2" = 1'-0"



4
SCALE: NOT TO SCALE

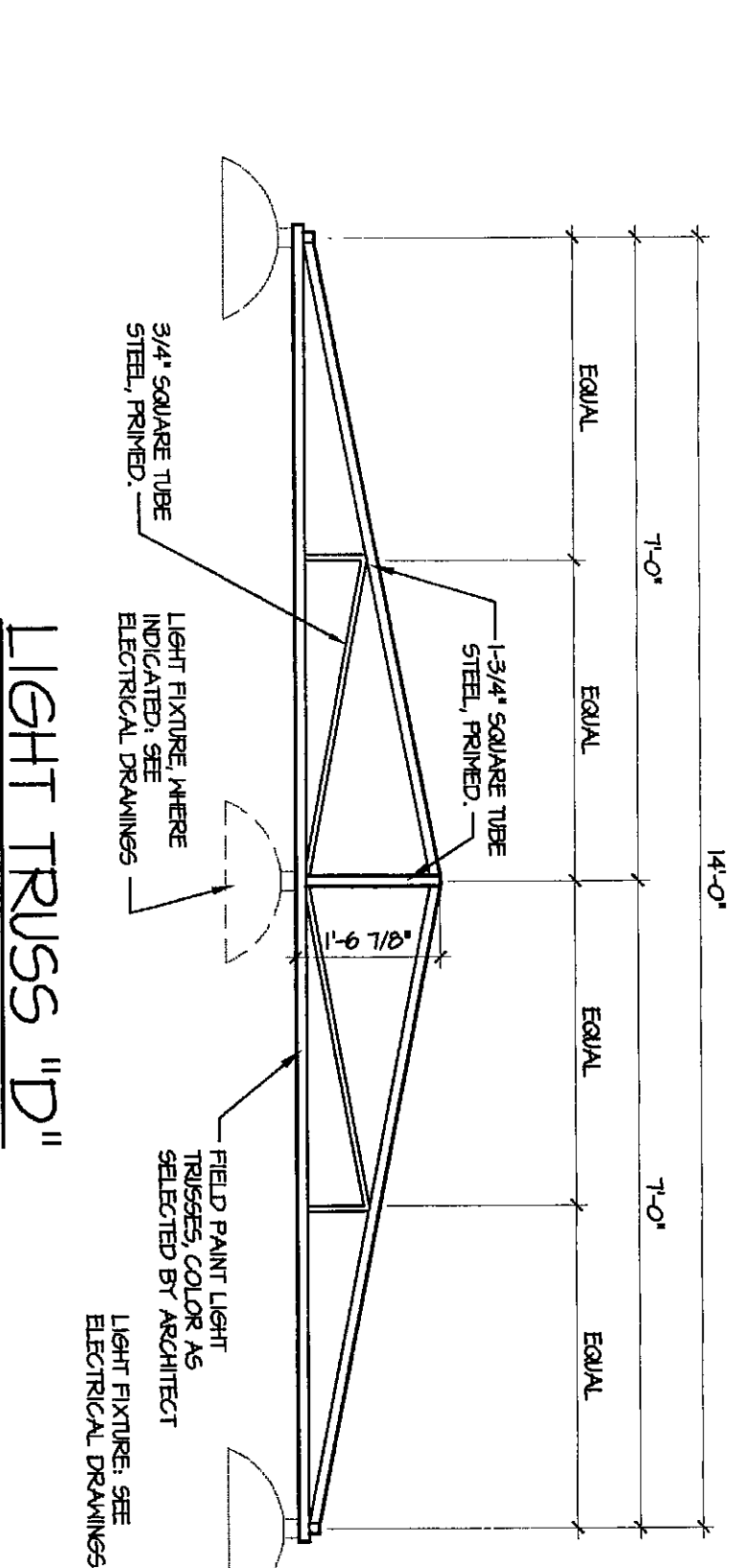


3
SCALE: RAIL SCALE



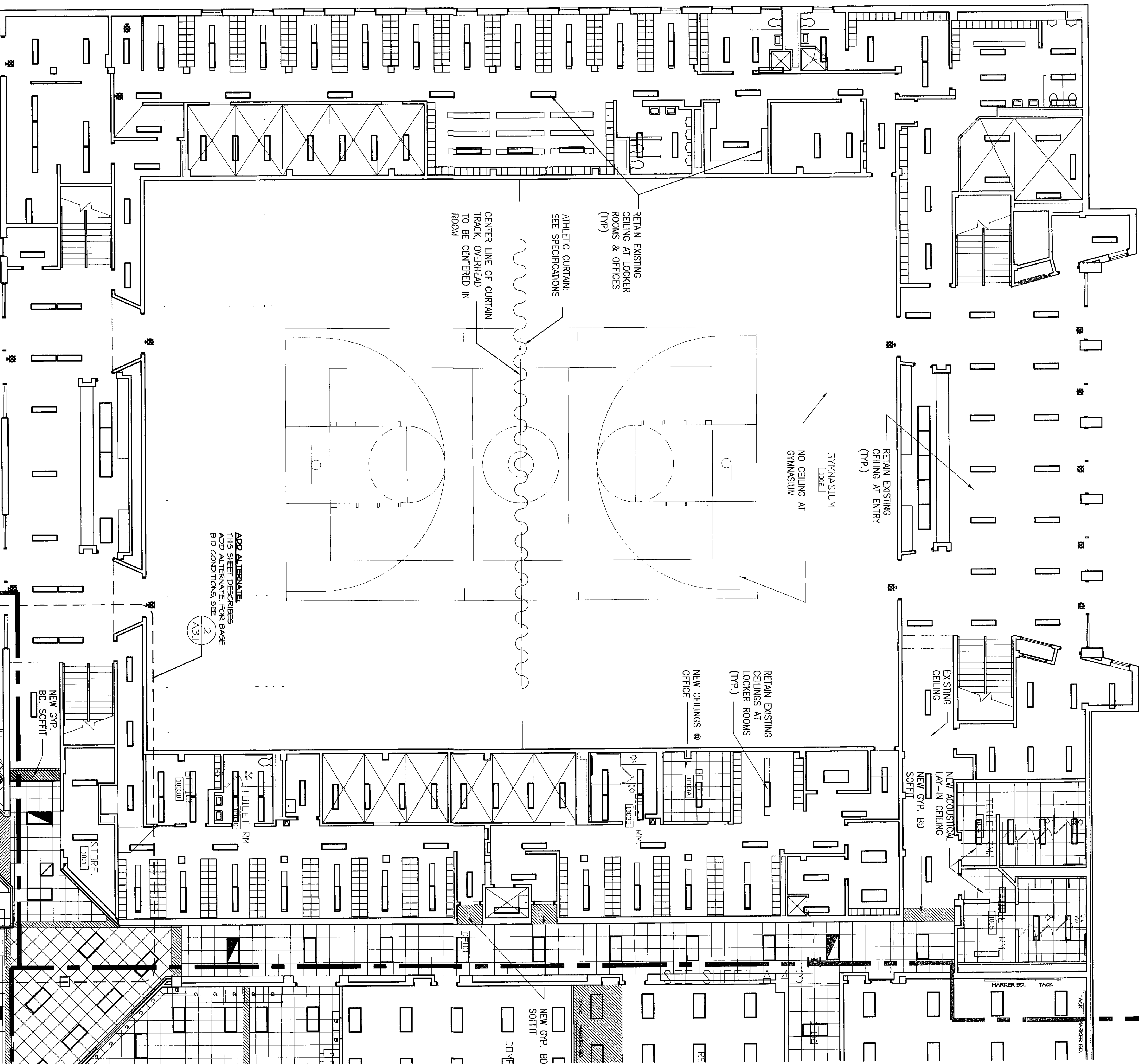
LIGHT TRUSS "B"

LIGHT TRUSS "C"



LIGHT TRUSSES

3
SCALE: 1/2" = 1'-0"



1
SCALE: 1/8" = 1'-0"

SEE SHEET A 4.2

2000-A-30

GENERAL CEILING

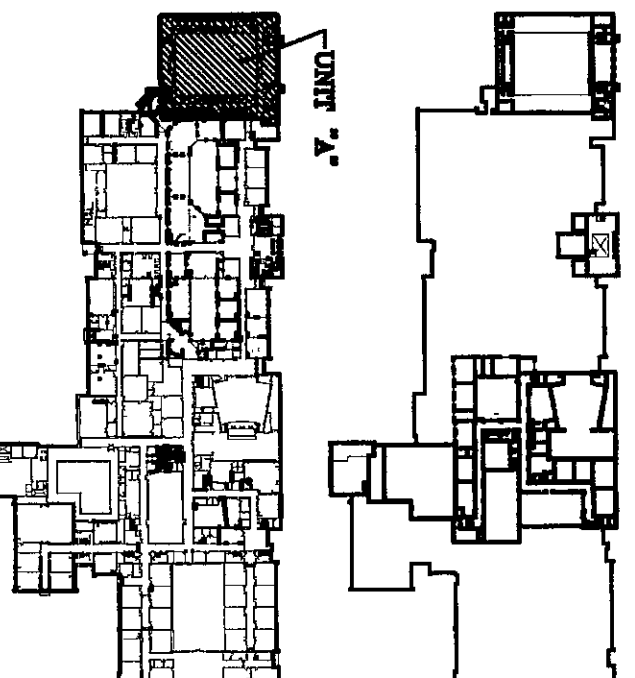
NOTES:

1. INSTALL CEILING AT HEIGHT NOTED, AND IF NOT NOTED, INSTALL NEW CEILING HEIGHT AT SAME HEIGHT AS EXISTING.
2. IN CORRIDORS, HOLD CEILINGS AS CLOSE TO STRUCTURE AS POSSIBLE. COORDINATE WITH SIDE WALL FINISHES. HEIGHT OF NEW CEILING IS TYPICALLY HIGHER THAN EXISTING.
3. NOTES INDICATED AS "ABC OR D" ARE INDICATING TRUSS TYPES. SEE DETAILS ON SHEET A4.1 FOR TRUSS DETAILS AND INFORMATION.

REFLECTED CEILING LEGEND:	
	2x2 ACOUSTICAL CEILING SYSTEM
	PAINTED GYPSUM BOARD CEILING (EXISTING)
	PAINTED GYPSUM BOARD CEILING WITH ACOUSTICAL TILES (EXISTING)
	ACOUSTICAL CEILING WITH LIGHTING FIXTURES
	MECHANICAL ITEMS

BASE BID CONDITIONS FOR ALTERNATES ARE DISCLOSED ON SHEETS A4.2 & A4.3. ALL ALTERNATE ARCHITECTURAL DRAWINGS INCLUDE ADDITIONAL CONDITIONS. ALTERNATES ARE INDICATED AS FOLLOWS:

KEY PLAN



ARCHITECTS
PLANNERS

VEAZEY
PARROTT
&
DURKIN
&
SHOULDERS

RENOVATION PROJECT FOR:
DUNEIL AND SCHOOL
CORPORATION
CHERTON, INDIANA

REFLECTED CEILING PLAN (UNIT B)

Project No: 990000
Project Date: 06-12-00
Drawn By: JPB/DKB
Approved By: VPD
Drawing No: A 4.1