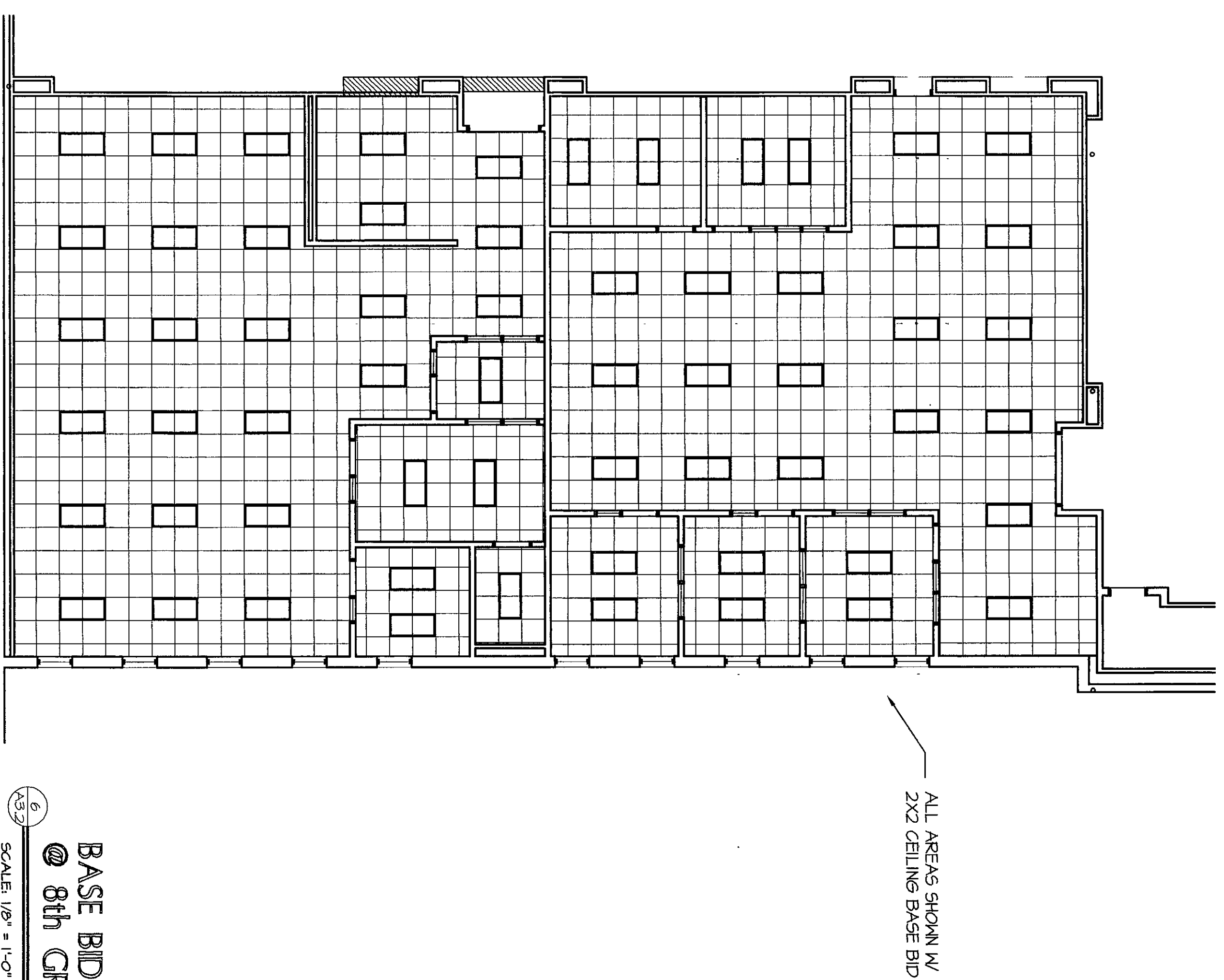


BASE BID FLOOR PLAN
 @ 8th GRADE TEAM
 SCALE: 1/8" = 1'-0"
 BASE BID CONDITIONS
 NOTE: SEE SHEET A2.9 FOR ADD
 ALTERNATE



6
10-3

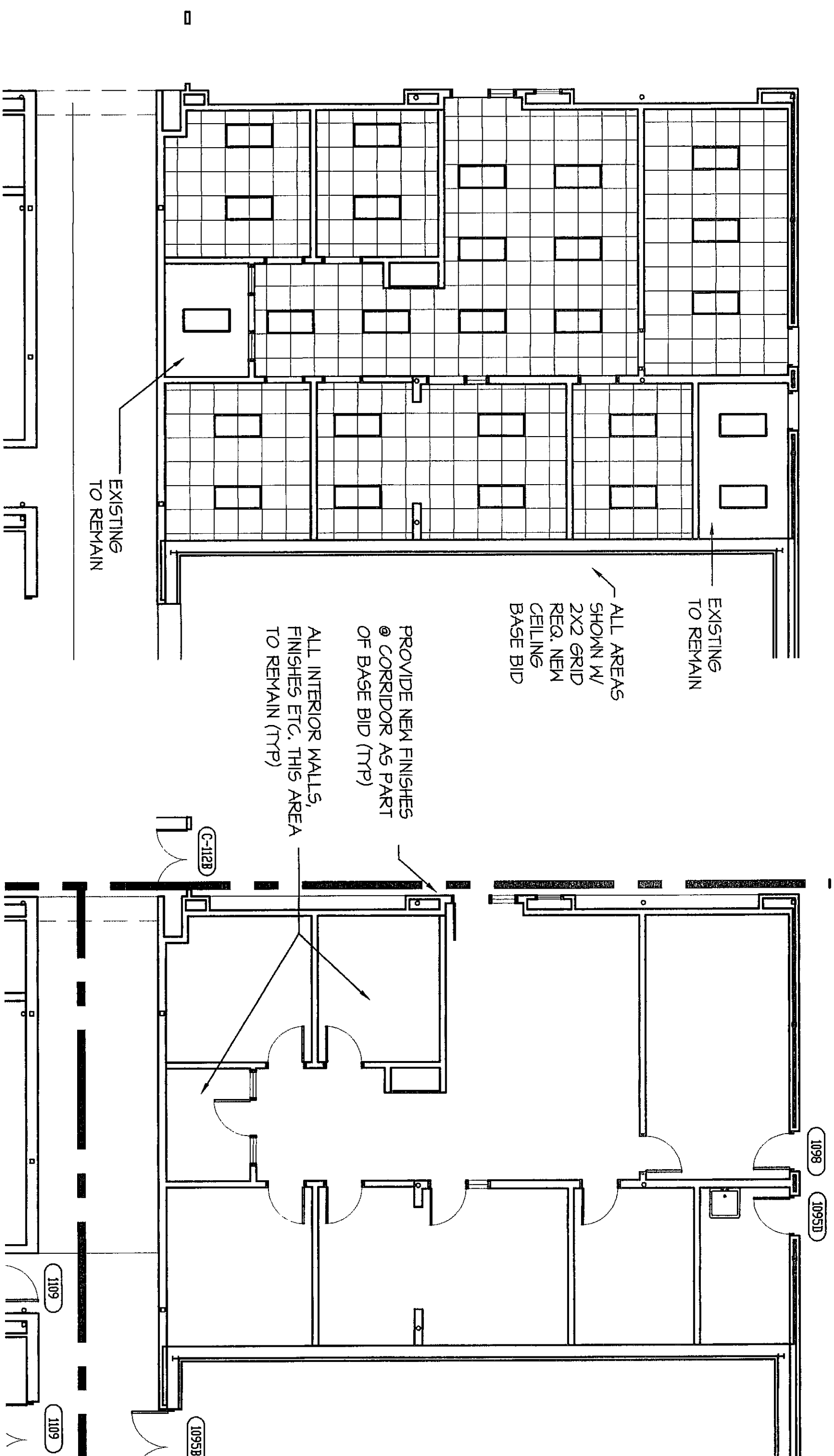
BASE BID REFLECTED CEILING PLAN

8th GRADE TEAM

SCALE: 1/8" = 1'-0"

BASE BID CONDITIONS

NOTE: SEE SHEET A4.9 FOR ADD
ALTERNATE

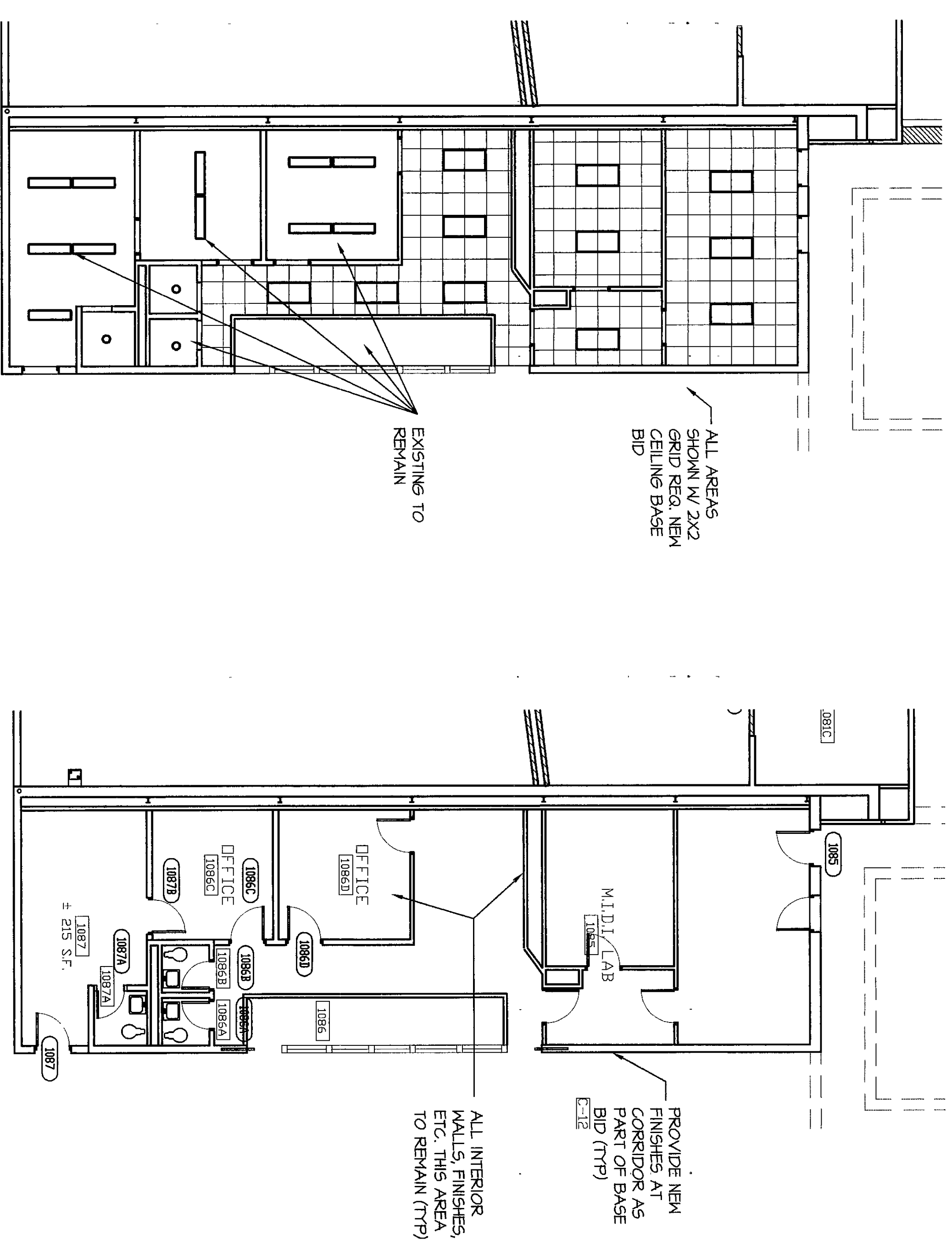


BASE BID REFLECTED CEILING
PLAN @ SMALL
GYMNASIUM LOCKER ROOMS

SCALE: 1/8" = 1'-0"

BASE BID CONDITIONS

NOTE: SEE SHEET A4.6 FOR ADD
ALTERNATE



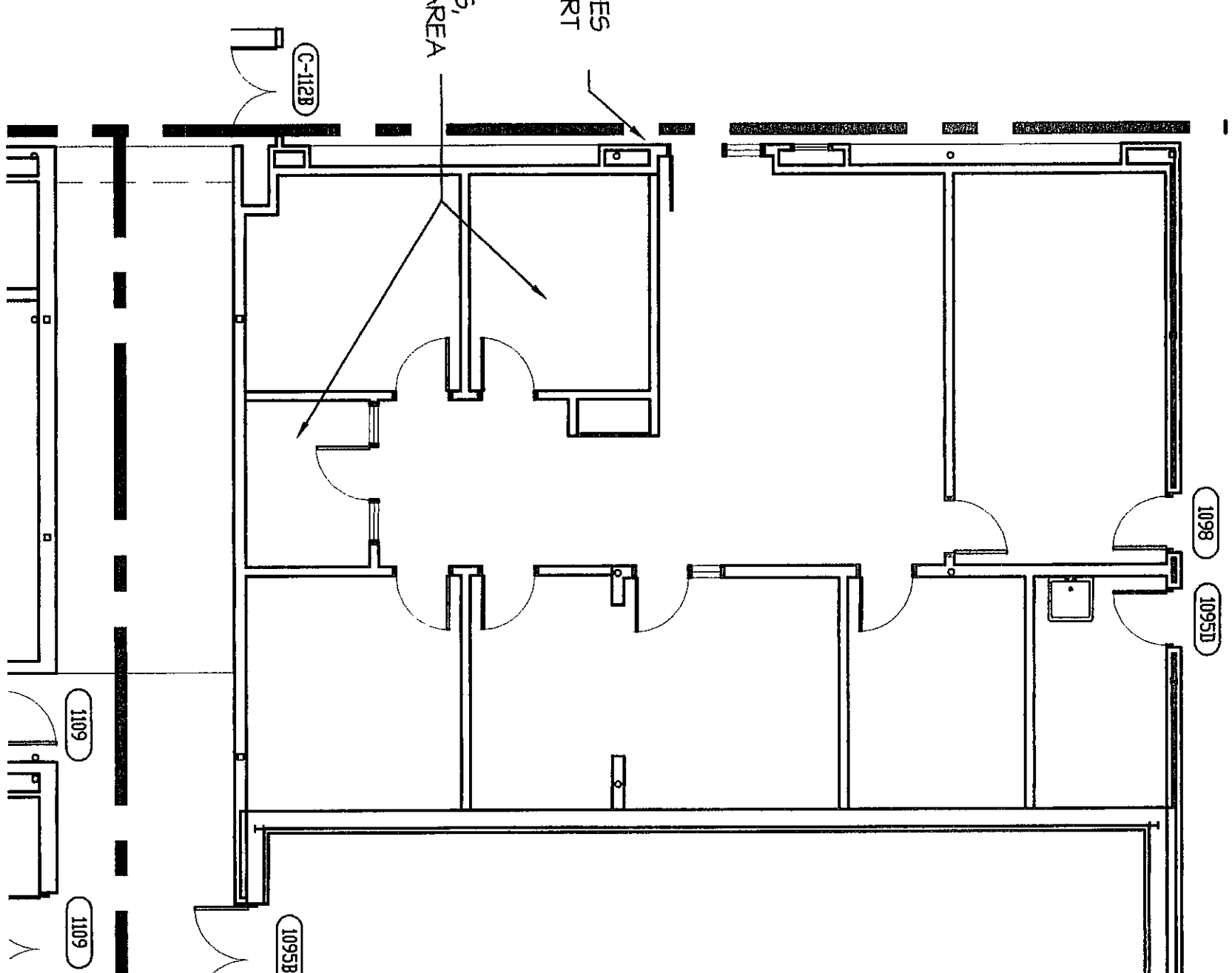
4
A3.3

BASE BID REFLECTED CEILING
PLAN @ M.I.D.L. LAB

SCALE: 1/8" = 1'-0"

BASE BID CONDITIONS

NOTE: SEE SHEET A4.6 FOR ADD
ALTERNATE









BASE BID FLOOR
PLAN @ SMALL
GYMNASIUM LOCKER ROOMS

SCALE: 1/8" = 1'-0"

BASE BID CONDITIONS

NOTE: SEE SHEET A2.6 FOR ADD
ALTERNATE

| REFLECTED CEILING LEGEND | |
|---|--|
|  | 2X2 ACQUAFLEX CEILING SYSTEM |
|  | PAINTED GYPSON BOARD CEILING FINISH |
|  | PORTLAND CEMENT PLASTER AND LAIME |
|  | OPEN TO STRUCTURE CEILING TO REMAIN |
|  | LIGHTING FIXTURES |
|  | MECHANICAL FITTINGS |

**VEAZEY
PARROTT
DURKIN
&
SHOULDERS**

**ARCHITECTS
ENGINEERS
PLANNERS**

9360 Pennyway, Suite 116
Indianapolis, IN 46268

RENOVATION PROJECT FOR:
DUNELAND SCHOOL
CORPORATION
CHESTERTON MIDDLE SCHOOL
CHESTERTON, INDIANA

BASE BID PLANS

| | |
|-------------|--------|
| Project No: | 999000 |
|-------------|--------|

Project Date: 06-12-00

Drawn By: JDB/M

Approved by: VPDS

A. 3.