

SPECIAL NOTE:

REFER TO FINISH SCHEDULE & FINISH SCHEDULE INDEX FOR SCHEDULE. CONSTRUCTION & FINISHES

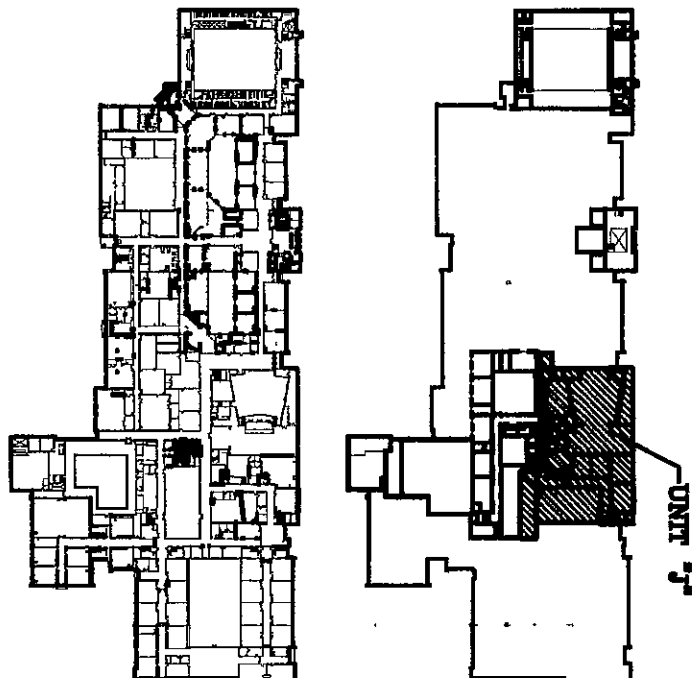
ARCHITECTURAL KEY NOTES:

- (A) — PROVIDE NEW DOOR(S), FRAMES) AND HANGING IN EXISTING MALL.  
(B) — PROVIDE NEW SINGLE GLAZED WINDOW AND HOLLOW METAL FRAME IN EXISTING MALL.  
(C) — PROVIDE NEW THERMALLY GLAZED WINDOW AND HOLLOW METAL FRAME IN EXISTING OPENING.  
(C9) — PROVIDE CORNER GLAZED

BASE BID CONDITIONS FOR ALTERNATES ARE DESCRIBED ON SHEETS A31 & A32 ALONG WITH REFERENCED DETAILS. THE BALANCE OF THE ARCHITECTURAL DRAWINGS INCLUDE AND INDICATE AS FOLLOWS:

REVISIONS TO SHEET

KEY PLAN



NORTH  
SCALE: 1/8" = 1'-0"

VEAZEY  
PARROTT  
&  
DURKIN  
&  
SHOULDERS

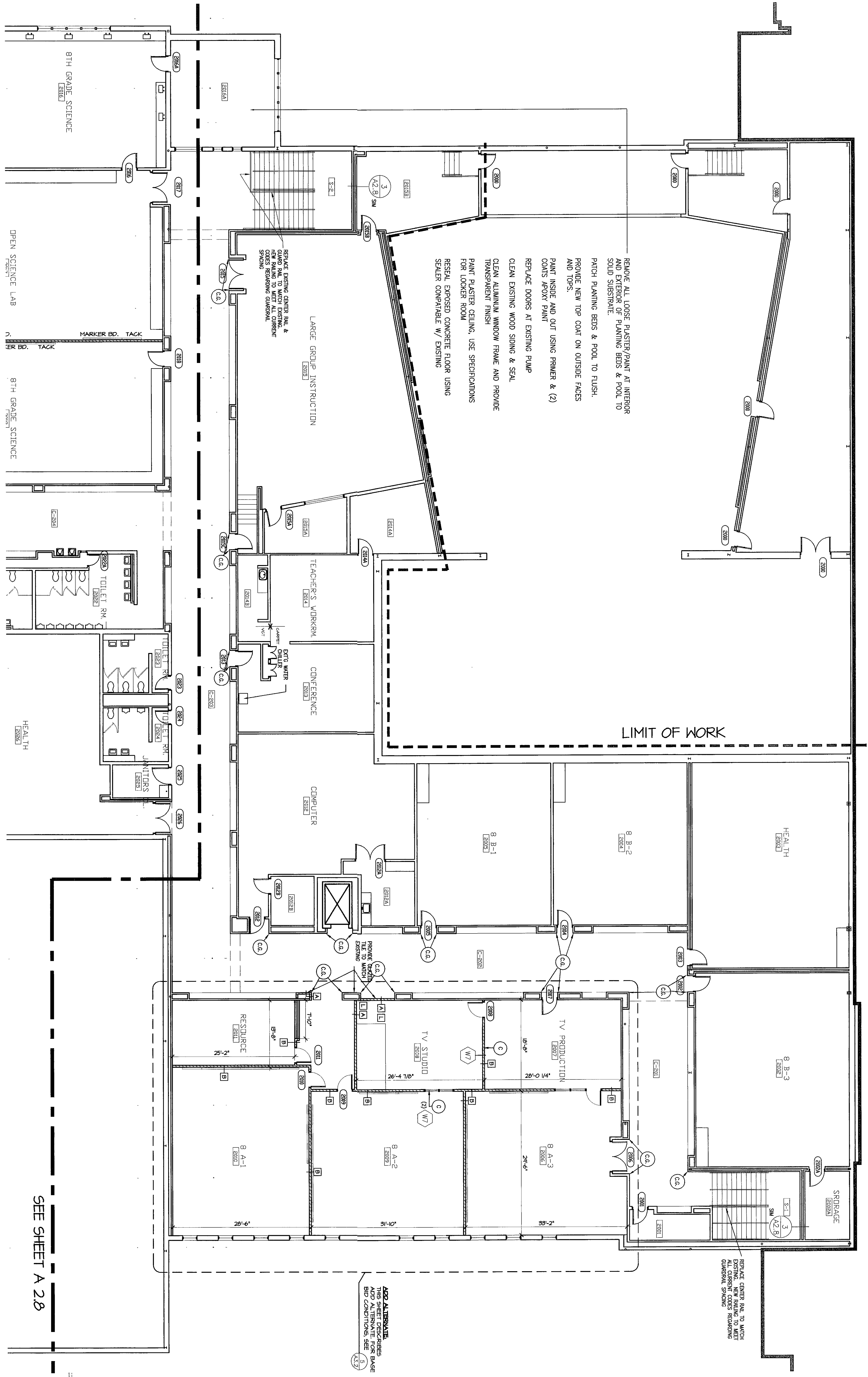
ARCHITECTS  
ENGINEERS  
PLANNERS

RENOVATION PROJECT FOR:  
DUNELAND SCHOOL  
CORPORATION  
CHESTERTON, INDIANA

FLOOR PLAN (UNT 'Y)

Project No. 948000  
Project Date 06-12-00  
Drawn By JDB/CKB  
Approved By VFD  
Drawing No. A 2.9

2000-A-2.2



FLOOR PLAN

SCALE: 1/8" = 1'-0"

SEE SHEET A 2.8