

SPECIAL NOTE:

REFER TO FINISH SCHEDULE
AND FINISH SCHEDULE NOTES
FOR ADDITIONAL
DESCRIPTION OF WORK
RELATIVE TO DEMOLITION
AND NEW FINISHES.

DEMOLITION GENERAL

NOTES

1. NOTIFY ARCHITECT IMMEDIATELY OF EXISTING CONDITIONS THAT ARE INCONSISTENT WITH THE CONSTRUCTION DOCUMENTS.
2. DEVIATION NOTATIONS INDICATED ON THESE DRAWINGS ARE INTENDED TO BE FOR EXACT INDICATIONS FOR DETERMINING SCOPE OF WORK. REFER TO "SELECTIVE DEVIATION" SPECIFICATIONS.
3. REFER TO SPECIFICATION DIVISION 2, SECTION "SELECTIVE DEVIATION" AND DIVISION 5 AND 16 FOR ALL DEVIATION REQUIREMENTS.

4. THIS DRAWING REPRESENTS THE INTENT OF ARCHITECTURAL AND STRUCTURAL DEMOLITION. FOR ADDITIONAL DEMOLITION REFER TO:
MECHANICAL DRAWINGS
ELECTRICAL DRAWINGS
PLUMBING DRAWINGS

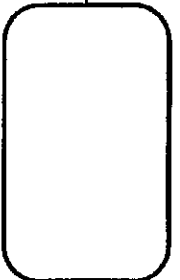
5. MANY LOCATIONS HAVE MULTIPLE LAYERS OF CEILING. ALL LAYERS OF CEILING SHALL BE REMOVED.

DEMOLITION KEY NOTES

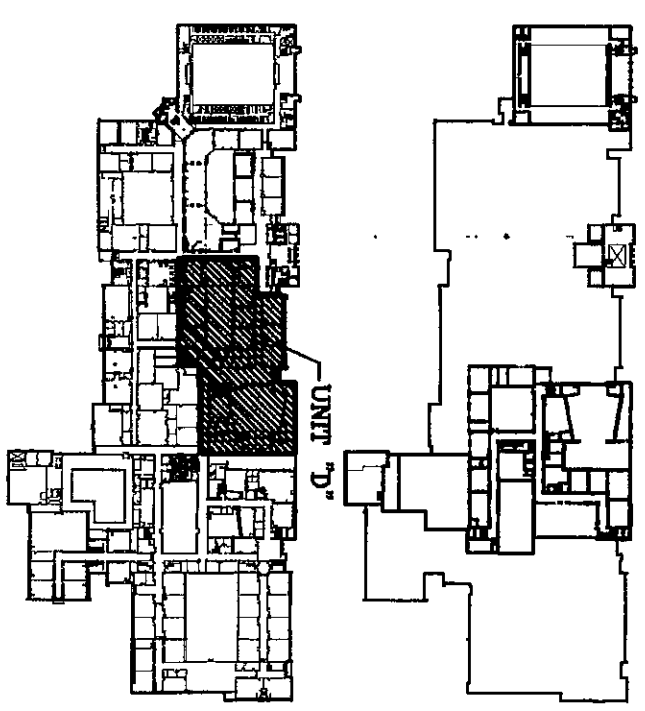
- 1 REMOVE AND DISPOSE OF EXISTING DOORS, FRAME(S), HARDWARE AND ASSOCIATED CONSTRUCTION.
- 2 REMOVE AND DISPOSE OF EXISTING INTERIOR PARTITION AND ASSOCIATED CONSTRUCTION.
- 3 REMOVE AND DISPOSE OF EXISTING EXTERIOR WALL AND ASSOCIATED CONSTRUCTION.
- 4 REMOVE AND DISPOSE OF EXISTING FLOORING MATERIAL AND ALL ASSOCIATED CONSTRUCTION.
- 5 REMOVE AND DISPOSE OF EXISTING CEILING FINISH MATERIALS, BULKHEADS AND ALL ASSOCIATED CONSTRUCTION.
- 6 EXISTING EQUIPMENT, FURNITURE, OR OTHER ITEMS, TO BE REMOVED BY OWNER.
- 7 PROVIDE NEW OPENING FOR NEW DOOR AND WINDOW.

BASE BID CONDITIONS FOR ALTERNATES ARE DESCRIBED ON SHEETS A3.1 & A3.2 ALONG WITH REBERNED DETAILS. THE BALANCE OF THE ARCHITECTURAL DRAWINGS INCLUDE ADDITIONAL ALTERNATE CONDITIONS. ALTERNATES ARE INDICATED AS FOLLOWS:

DESCRIPTION, SEE SHEET —
A3X FOR BASE BID
CONDITION



KEY PLAN:



NORTH
SCALE: 1/8" = 1'-0"

**ARCHITECTS
ENGINEERS
PLANNERS**

**VEAZEY
PARROTT
DURKIN &
SHOULDERS**

3850 Priority Way S Dr
Suite 118
Indianapolis, In 46240

**RENOVATION PROJECT FOR:
DUNELAND SCHOOL
CORPORATION
CHESTERTON MIDDLE SCHOOL
CHESTERTON, INDIANA**

DEMOLITION PLAN (UNIT 'D')

Project Date: 06-12-00

Drawn By: IDRA/DFE

Approved By: VPJDS

Drawing No:

1000

2008年12月 第26卷第12期