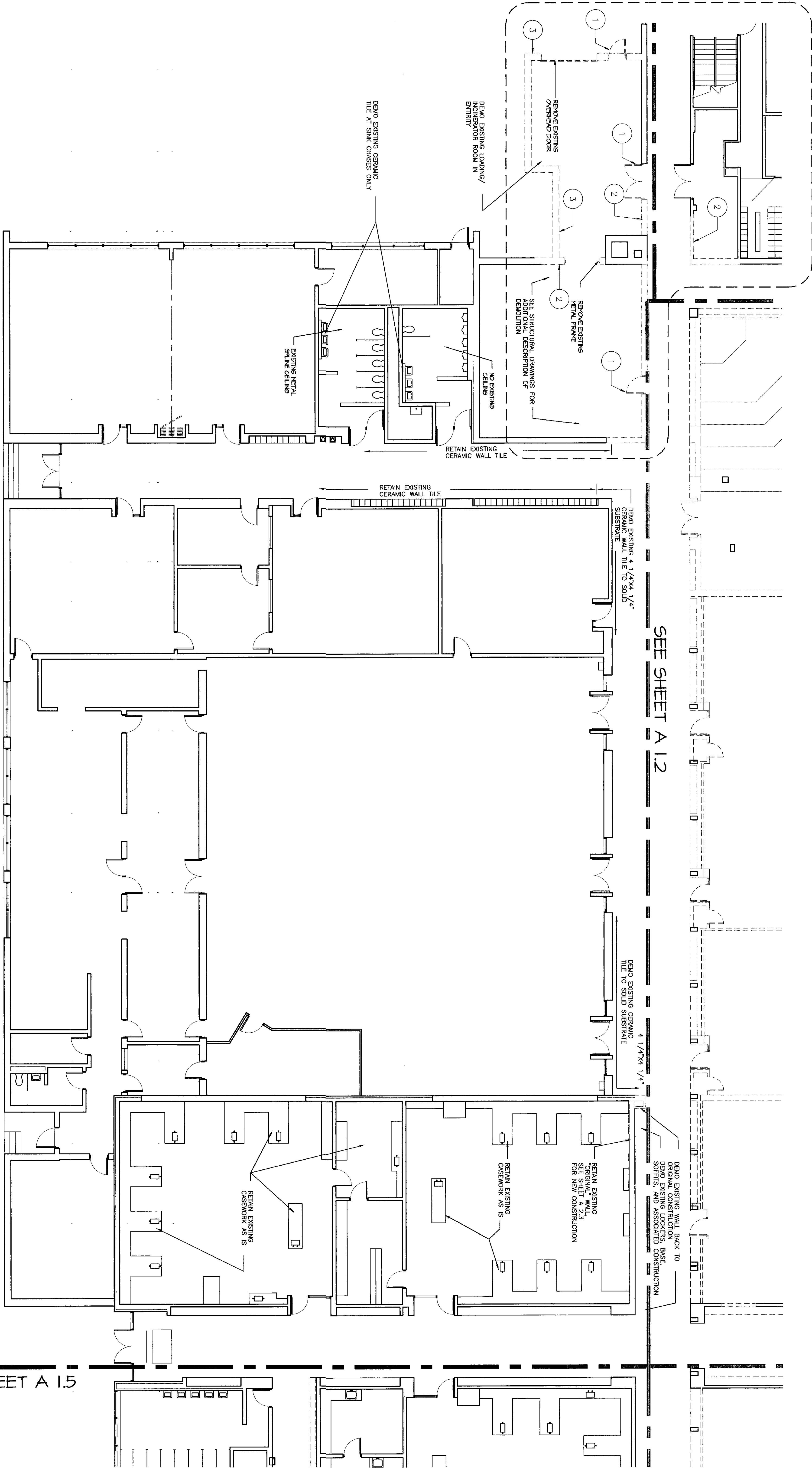


ADD ALTERNATE.
THIS SHEET DESCRIBES
THE ALTERNATE FOR BASE
BID CONDITIONS. SEE
BID CONDITIONS, SEE



SEE SHEET A 1.2

SEE SHEET A 1.5

DEMOLITION FLOOR PLAN

SCALE: 1/8" = 1'-0"

SPECIAL NOTE:

REFER TO FINISH SCHEDULE
AND FINISH SCHEDULE NOTES
FOR ADDITIONAL
DESCRIPTION OF WORK
RELATIVE TO DEMOLITION
AND NEW FINISHES.

DEMOLITION GENERAL

NOTES:

1. REFER TO SPECIFICATION DIVISION 2 SECTION "SELECTIVE DEMOLITION" AND DIVISION 15 AND 16 FOR ALL DEMOLITION REQUIREMENTS.
2. NOTIFY ARCHITECT IMMEDIATELY OF EXISTING CONDITIONS THAT ARE INCONSISTENT WITH THE CONSTRUCTION DOCUMENTS.
3. DEMOLITION NOTATIONS INDICATED ON THESE DRAWINGS ARE INTENDED TO BE THE EXACT INDICATIONS FOR DEMOLITION OF WORK. REFER TO SELECTIVE DEMOLITION SPECIFICATION.
4. THIS DRAWING REPRESENTS THE INTENT OF THE ARCHITECT FOR THE DEMOLITION OF MECHANICAL, ELECTRICAL, AND PLUMBING (MEP) FINISHES. FOR ADDITIONAL DEMOLITION REFER TO MECHANICAL, ELECTRICAL, AND PLUMBING DRAWINGS SPECIFICATIONS.
5. FOR CEILING DEMOLITION, SEE REFLECTED LINES AND NOTES TO BE REMOVED. ALL CEILING ARE TO HAVE EXISTING CEILING DEMOLTED TO DECK ABOVE.
6. MANY LOCATIONS HAVE MULTIPLE LAYERS OF CEILING. ALL LAYERS OF CEILING SHALL BE REMOVED.

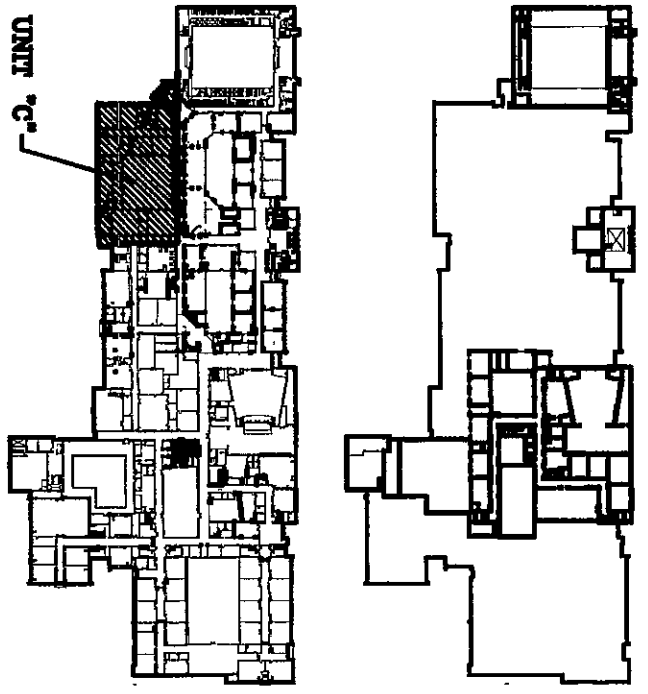
DEMOLITION KEY NOTES:

1. REMOVE AND DISPOSE OF EXISTING DOORS, FRAMES, HARDWARE AND ASSOCIATED CONSTRUCTION.
2. REMOVE AND DISPOSE OF EXISTING INTERIOR PARTITION AND ASSOCIATED CONSTRUCTION.
3. REMOVE AND DISPOSE OF EXISTING EXTERIOR WALL AND ASSOCIATED CONSTRUCTION.
4. REMOVE AND DISPOSE OF EXISTING FLOORING MATERIAL AND ALL ASSOCIATED CONSTRUCTION.
5. REMOVE AND DISPOSE OF EXISTING CEILING MATERIAL AND ALL ASSOCIATED CONSTRUCTION.
6. EXISTING EQUIPMENT, FURNITURE OR OTHER ITEMS TO BE REMOVED BY OWNER.
7. PROVIDE NEW OPENINGS FOR NEW DOOR AND WINDOW.

BASE BID CONDITIONS FOR ALTERNATES ARE DESCRIBED ON SHEETS A31 & A32 ALONG WITH REFERENCED DETAILS. THE BALANCE OF THE ARCHITECTURAL DRAWINGS INCLUDE ADD ALTERNATE CONDITIONS. ALTERNATES ARE NOTED AS FOLLOWS:

DEMOLITION KEY

KEY PLAN:



NORTH
SCALE: 1/8" = 1'-0"

ARCHITECTS
ENGINEERS
PLANNERS

VEAZEY
PARROTT
DURKIN
&
SHOULDER

RENOVATION PROJECT FOR:
DUNELAND SCHOOL
CORPORATION
CHESTERTON, INDIANA

DEMOLITION PLAN (UNIT 'C')

Project No.	4480000
Project Date	06-12-00
Drawn By	JDB/DKS
Approved By	YDS
Drawing No.	A 1.3