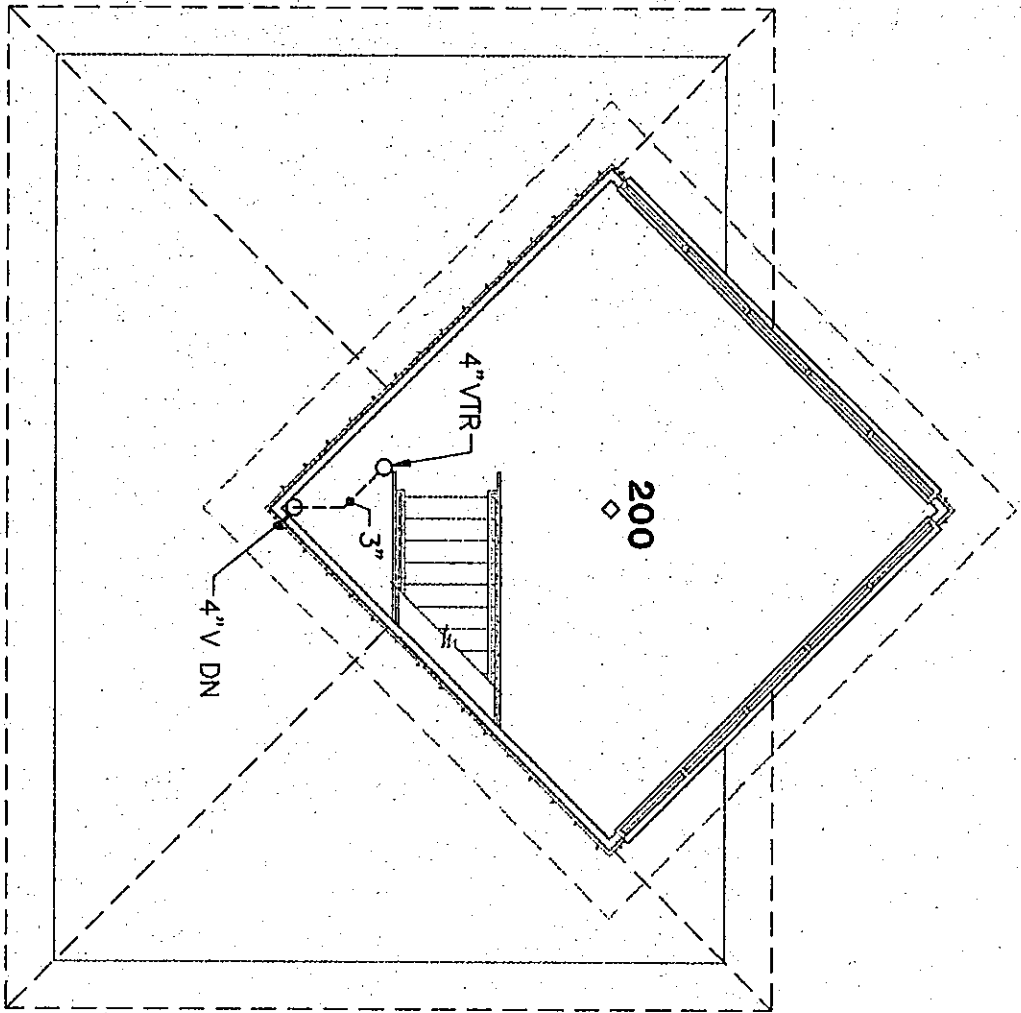
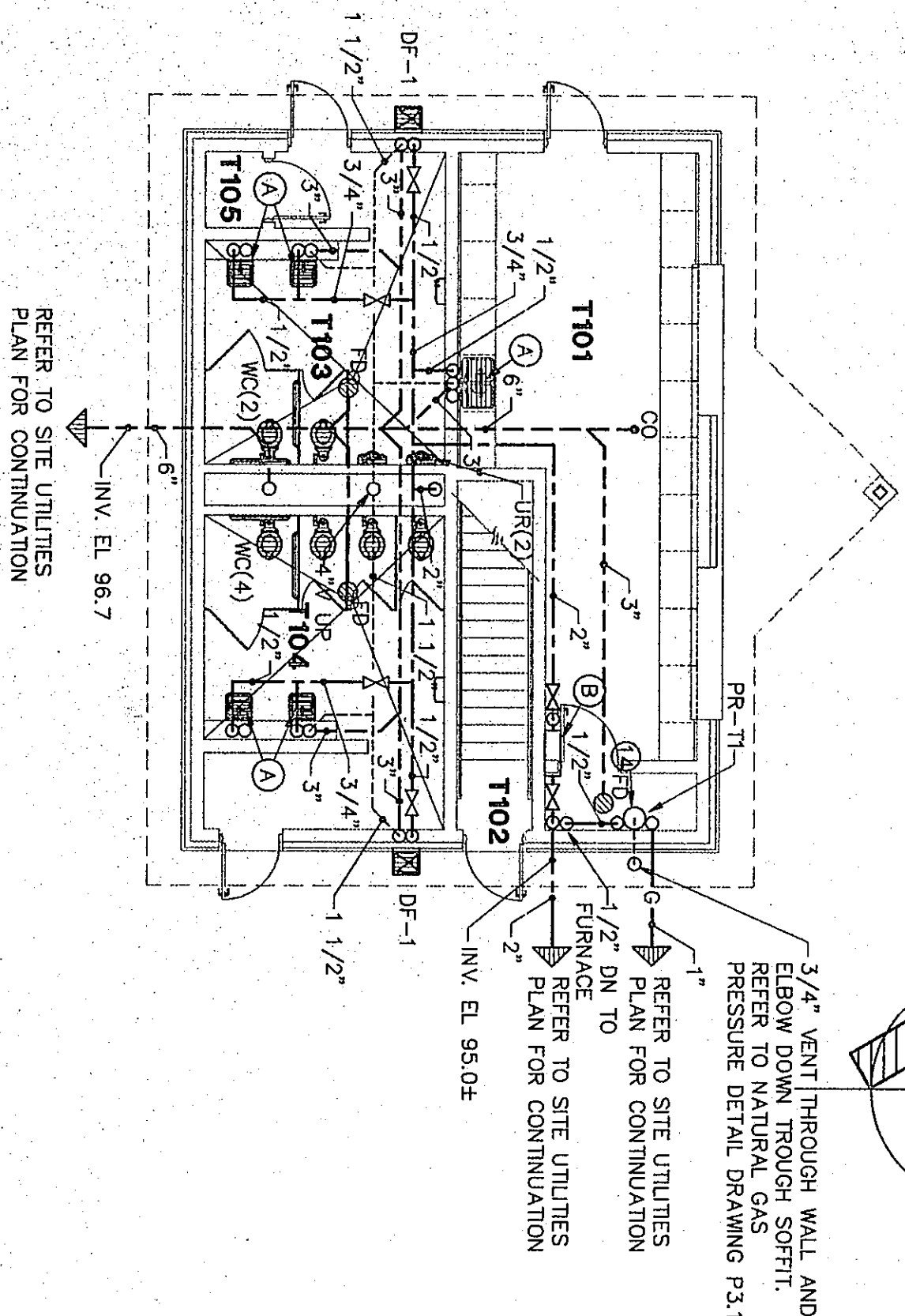


PLUMBING PLAN NOTES:

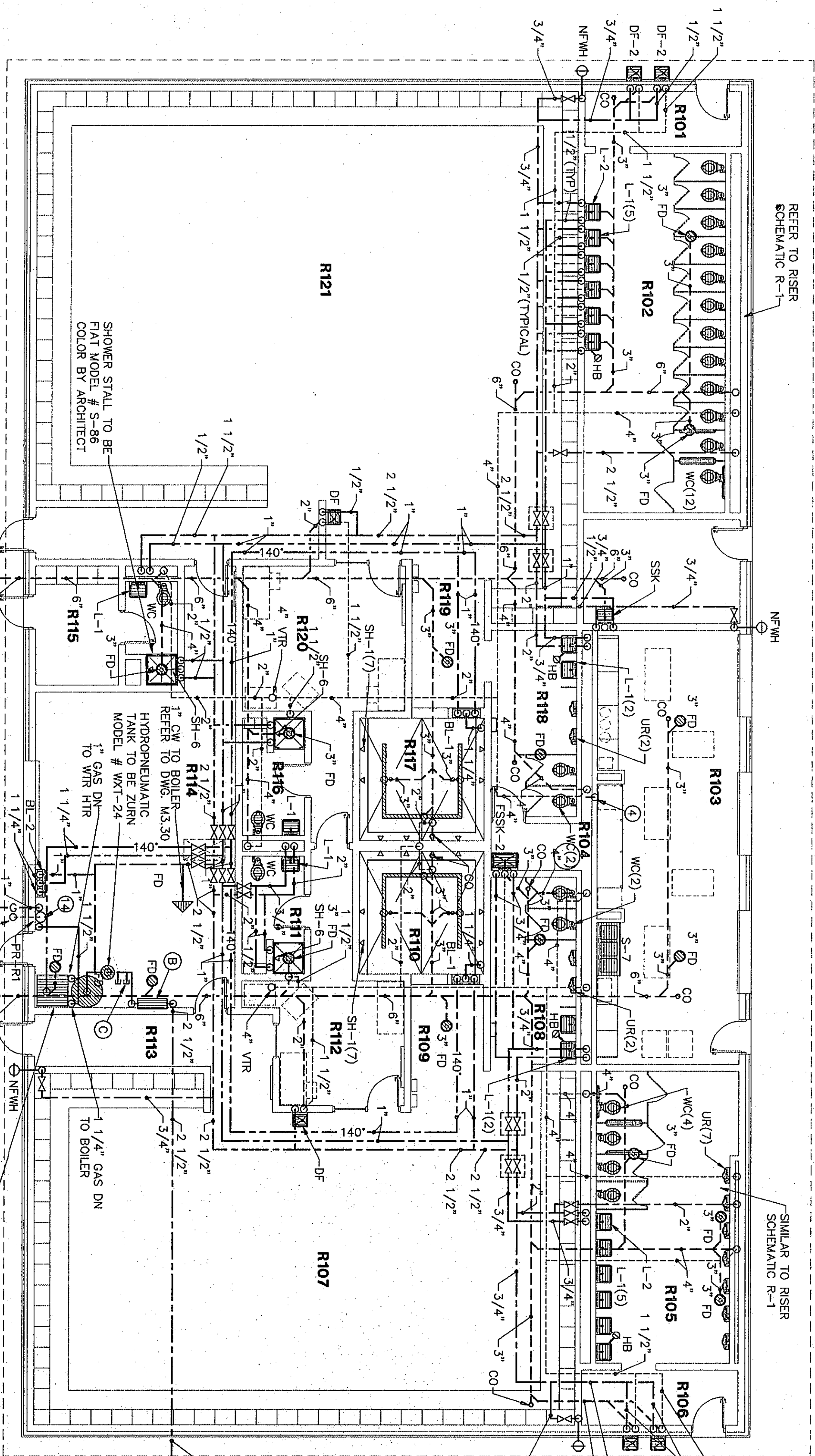
- 1/2" HOT AND COLD WATER, 1/2" WASTE UP TO FIXTURE ABOVE.
- 1/2" COLD WATER UP AND DOWN TO DMC.
- 1/2" HOT AND COLD WATER, 1/2" WASTE DOWN TO FLOOR BELOW.
- 1/2" COW DOWN TO 6" ABOVE FLOOR, VALVE AND CAP FOR REFRIGERATOR BELAGER.
- DISHWASHER TO BE CONNECTED TO WATER AND WASTE PLUMBING OF ADJACENT SINK.
- HOT WATER AND/OR COLD WATER, GAS, AND SANITARY VENT PIPING ARE TO BE INSTALLED IN COVERED FLOOR AREAS, REFER TO DETAIL OF FINISHES INCLUDED ON ARCHITECTURAL PLANS.
- HOT WATER AND/OR COLD WATER AND/OR GAS AND/OR SANITARY VENT PIPING TO BE INSTALLED IN BASE FRAMING OF CASEWORK, BEHIND CABINETS AND ABOVE FLOOR.
- INSTALL DISPOSER AT THIS LOCATION, TO BE "N-SINK-ERATOR", MODEL 77, 3/4 HP.
- GAS PIPING DOWN TO SOLIDOD VALVE WITHIN RECESSED CABINET, AND UP FROM CABINET, REFER TO DETAIL.
- WASHING MACHINE FITTING, REFER TO DETAIL DWG. P3.1
- 1/2" GAS AT 6" ABOVE FLOOR, WITH STOP VALVE FOR RANGE CONNECTION.
- DARKROOM SINK, WITH MIXING FAUCET, CONNECT SANITARY VENT, HOT AND COLD WATER, VERIFY ALL CONNECTIONS.
- 1/2" COMPRESSED AIR PIPING DOWN TO 48" ABOVE FINISHED FLOOR, VALVE AND TEE WITH DIRT LEG, AND PLUG FOR FUTURE QUICK DISCONNECT BY OWNER.
- GAS REGULATOR TO PROVIDE 45 OI. FT. OF 7"WC NATURAL GAS PRESSURE FROM 2 PSI, REFER TO DETAIL DWG. P3.1
- GAS VALVE CABINET REFER TO DETAIL DWG. P3.1
- COMPRESSED AIR PRESSURE REGULATOR PIPING DETAIL, REFER TO DETAIL DWG. P3.1
- FLOOR DRAIN TO BE JOSAM 35235-2, WITH HINGED GRATE AND SOCKET BUCKET, TO BE INSTALLED W/ TRAP SUMP PUMP TO BE LITTLE GIANT MODEL# BE-CA-FRS WITH CHECK VALVE AND UNION.
- 1/2" OPEN SITE DRAIN, SEE DETAIL DWG. P3.1, LOCATE ABOVE CEILING TO ALLOW FOR MAINTENANCE ACCESS.



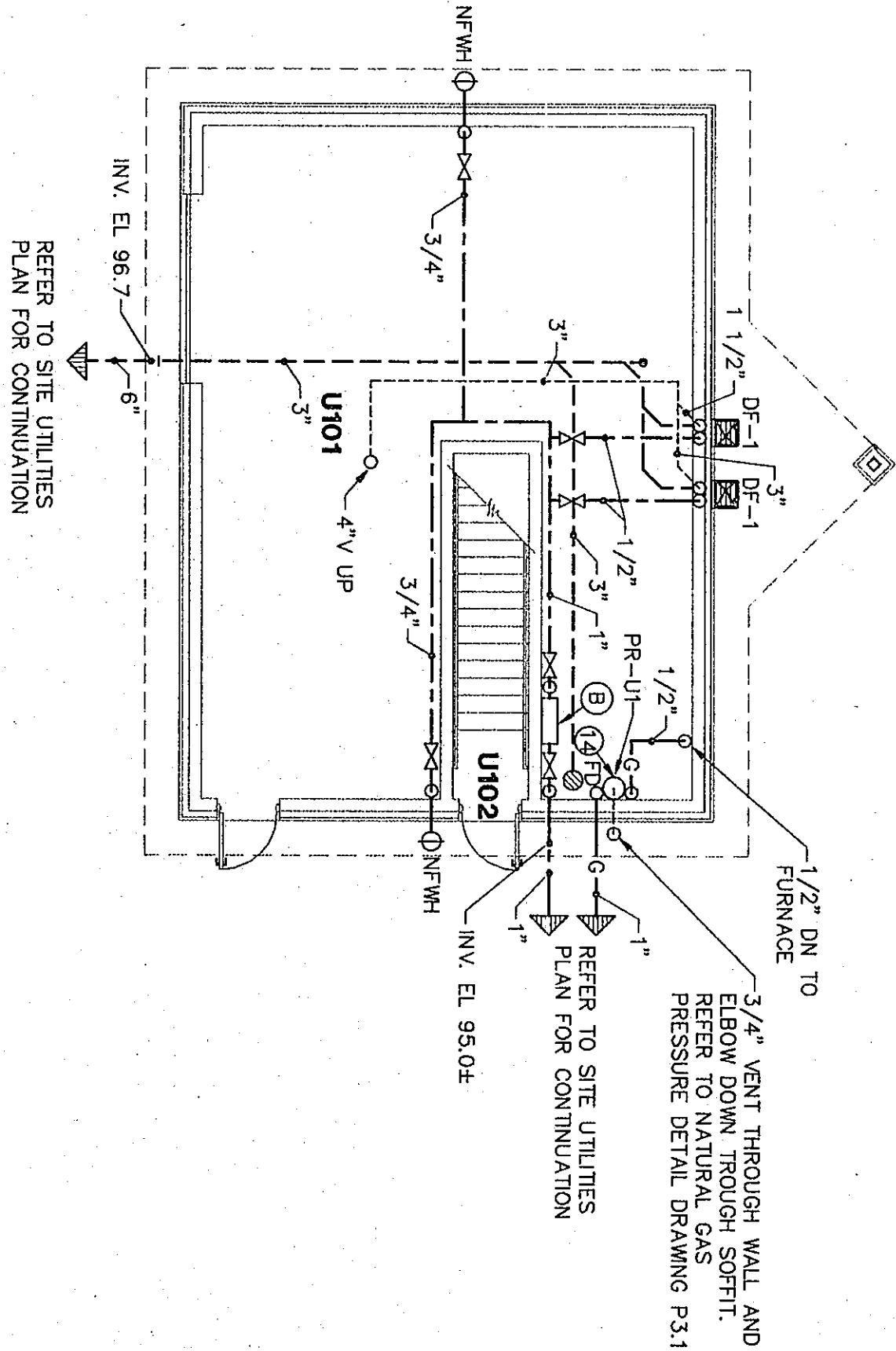
SECOND FLOOR PLAN UNITS "T,U &V"



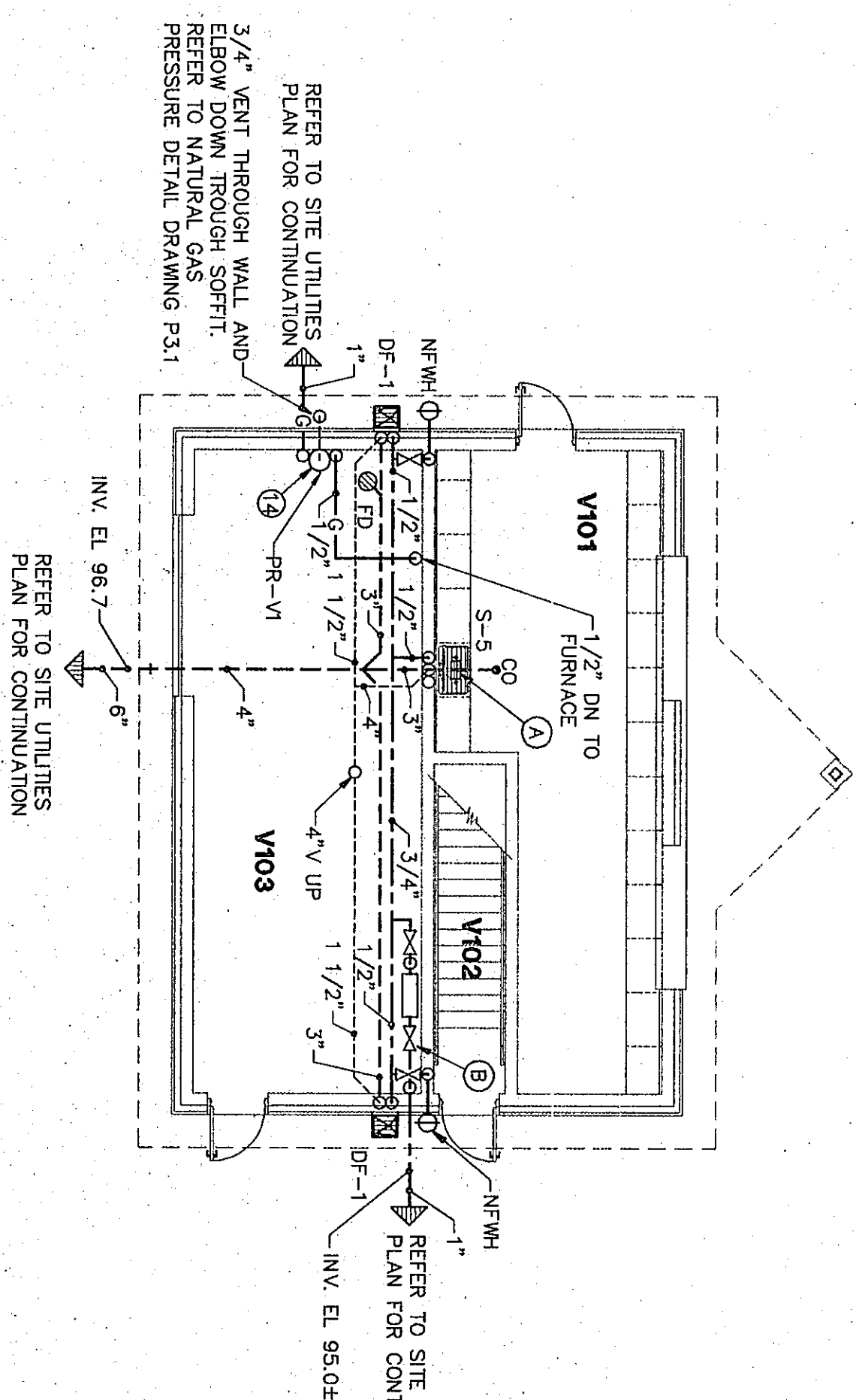
PLUMBING PLAN UNIT "T"



PLUMBING PLAN UNIT "R"



PLUMBING PLAN UNIT "U"



PLUMBING PLAN UNIT "V"

ROOM LEGEND "R"

ROOM NO.	ROOM NAME	AREA S.F.	CEILING HEIGHT
R101	VESTIBULE	80	9'-4"
R102	RESTROOM	40	9'-4"
R103	CONCESSIONS	566	9'-4"
R104	UTILITY	81	9'-4"
R105	RESTROOM	80	9'-4"
R106	VESTIBULE	80	9'-4"
R107	LOCKER ROOM	1701	9'-4"
R108	LOCKER ROOM	1142	9'-4"
R109	LOCKER ROOM	61	9'-4"
R110	LOCKER ROOM	66	9'-4"
R111	LOCKER ROOM	66	9'-4"
R112	LOCKER ROOM	142	9'-4"
R113	LOCKER ROOM	142	9'-4"
R114	LOCKER ROOM	142	9'-4"
R115	LOCKER ROOM	142	9'-4"
R116	LOCKER ROOM	142	9'-4"
R117	LOCKER ROOM	142	9'-4"
R118	LOCKER ROOM	142	9'-4"
R119	LOCKER ROOM	142	9'-4"
R120	LOCKER ROOM	142	9'-4"
R121	LOCKER ROOM	142	9'-4"
R122	LOCKER ROOM	142	9'-4"
R123	LOCKER ROOM	142	9'-4"
R124	LOCKER ROOM	142	9'-4"
R125	LOCKER ROOM	142	9'-4"

ROOM LEGEND "T"

ROOM NO.	ROOM NAME	AREA S.F.	CEILING HEIGHT
T101	CONCESSIONS	334	8'-8"
T102	STAR	73	8'-8"
T103	MEN'S TOILET	189	8'-8"
T104	MEN'S TOILET	123	8'-8"
T105	MEN'S TOILET	123	8'-8"
T106	MEN'S TOILET	24	8'-8"
T107	MEN'S TOILET	351	8'-8"

ROOM LEGEND "U"

ROOM NO.	ROOM NAME	AREA S.F.	CEILING HEIGHT
U101	STAR	226	8'-8"
U102	STAR	226	8'-8"
U103	STAR	226	8'-8"
U104	STAR	226	8'-8"
U105	STAR	226	8'-8"
U106	STAR	226	8'-8"
U107	STAR	226	8'-8"

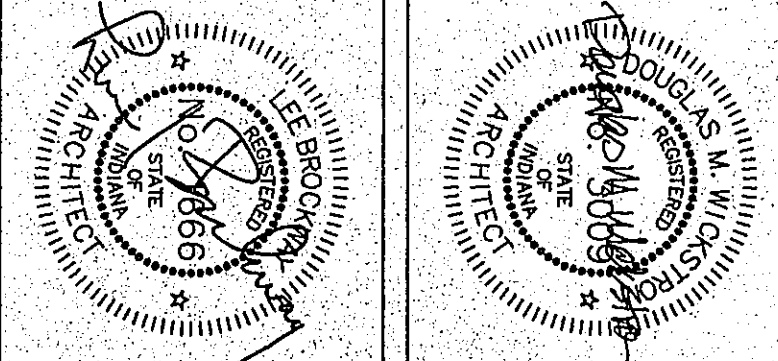
ROOM LEGEND "V"

ROOM NO.	ROOM NAME	AREA S.F.	CEILING HEIGHT
V101	STAR	363	8'-8"
V102	STAR	452	8'-8"
V103	STAR	452	8'-8"
V104	STAR	452	8'-8"
V105	STAR	452	8'-8"
V106	STAR	452	8'-8"
V107	STAR	452	8'-8"

NOTES:

- BOOSTER HEATER (UNDER FINISHES) TO BE INSTALLED IN ROOM 200, SEE DETAIL DWG. P3.1, WATTS, 18.7 AMPS AND 0.7 SPN @ 400 TEMPERATURE RISE, PHONE# (203) 261-0634
- BACK-FLOW PREVENTER TO BE WATTS SERIES 9090T-S
- 2" FUTURE BOOSTER PUMP CONNECTION

COPYRIGHT 1997 BY FANNING/HOWEY ASSOCIATES, INC.



THE NEW
CHESTERTON HIGH SCHOOL
FOR THE
DUNELAND SCHOOL CORPORATION
CHESTERTON, INDIANA

Fanning/Howey Associates, Inc.
Architects Engineers Consultants

PLUMBING PLAN UNITS R,T,U,V
DRAWN BY: JUD COMM. NO.: 95067.00
CHECKED BY: CAM DATE: APRIL 21, 1997
P2.30
REVISIONS NO. DATE

CHESTERTON HIGH SCHOOL
95067.00