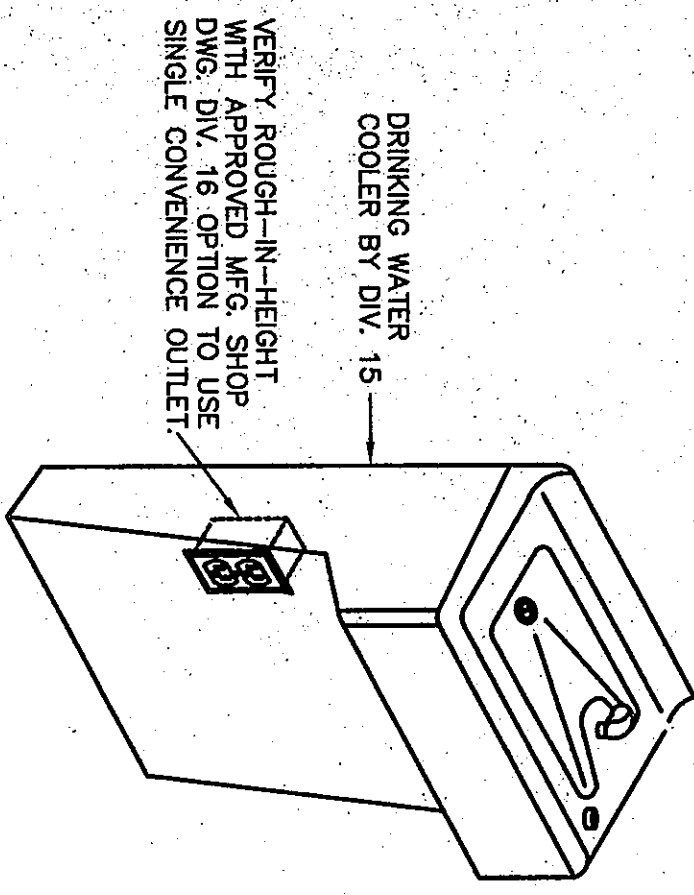
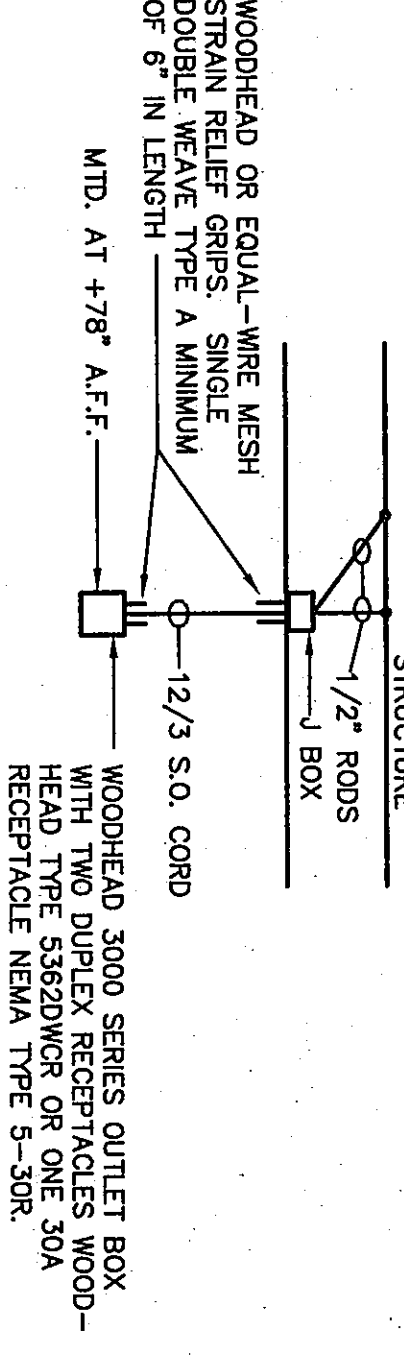


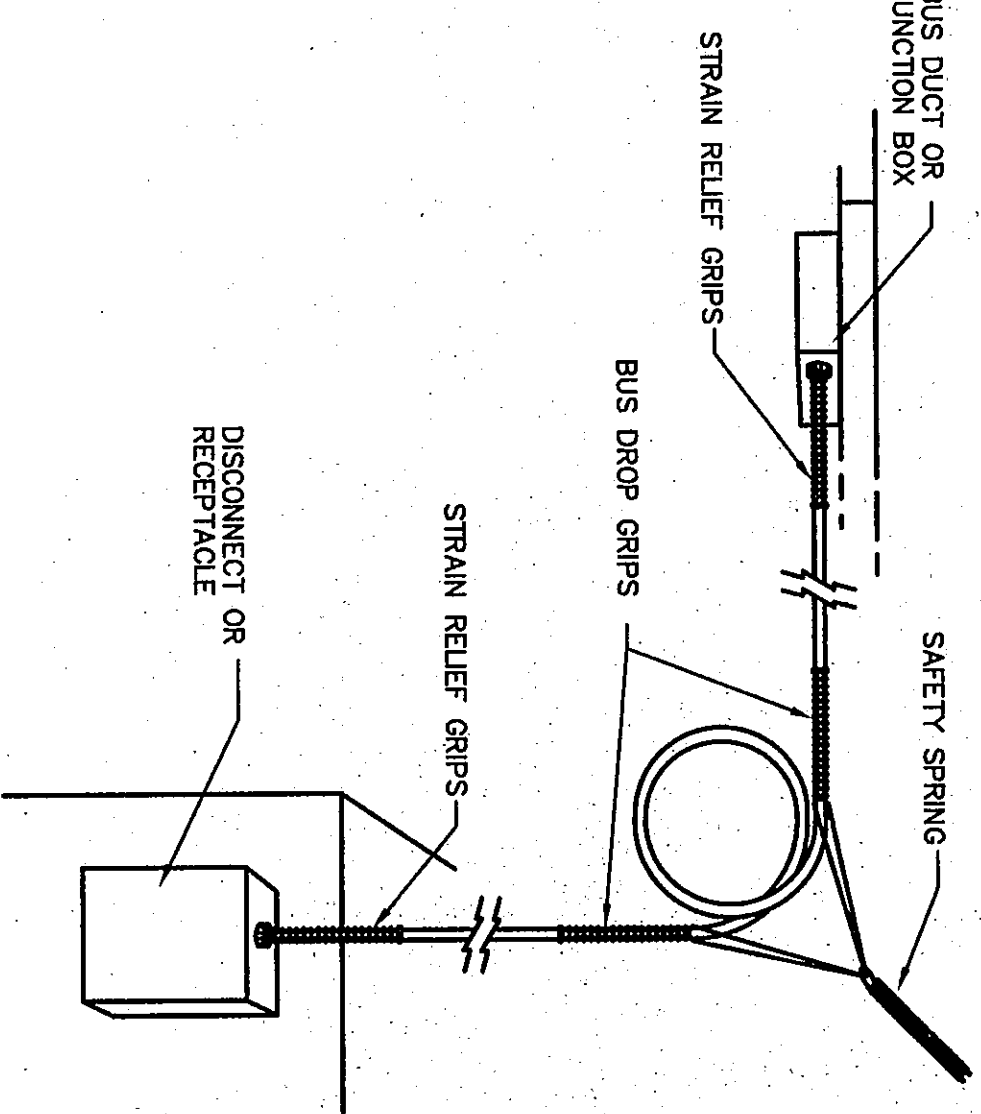
5



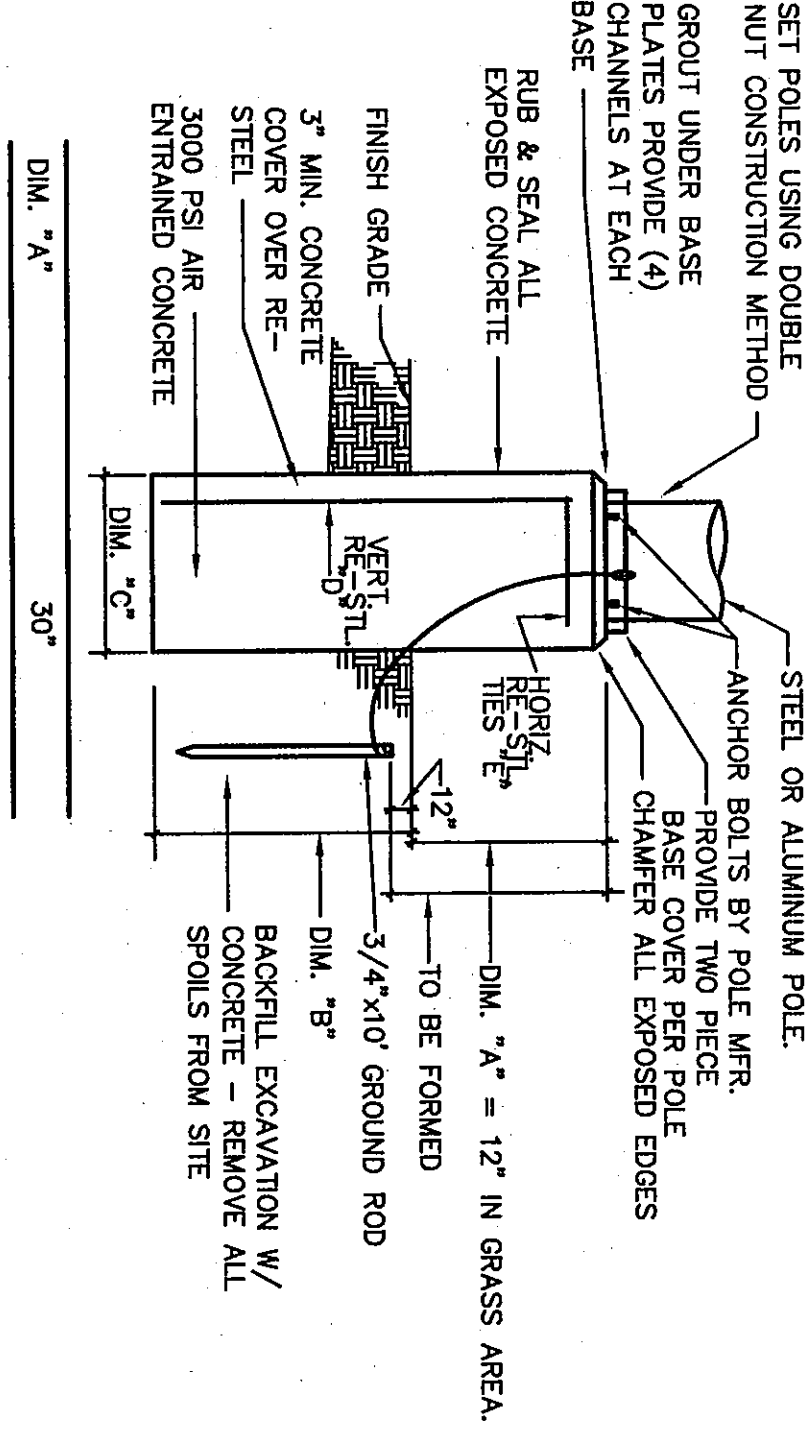
1 WATER COOLER "WC" WIRING
NO SCALE



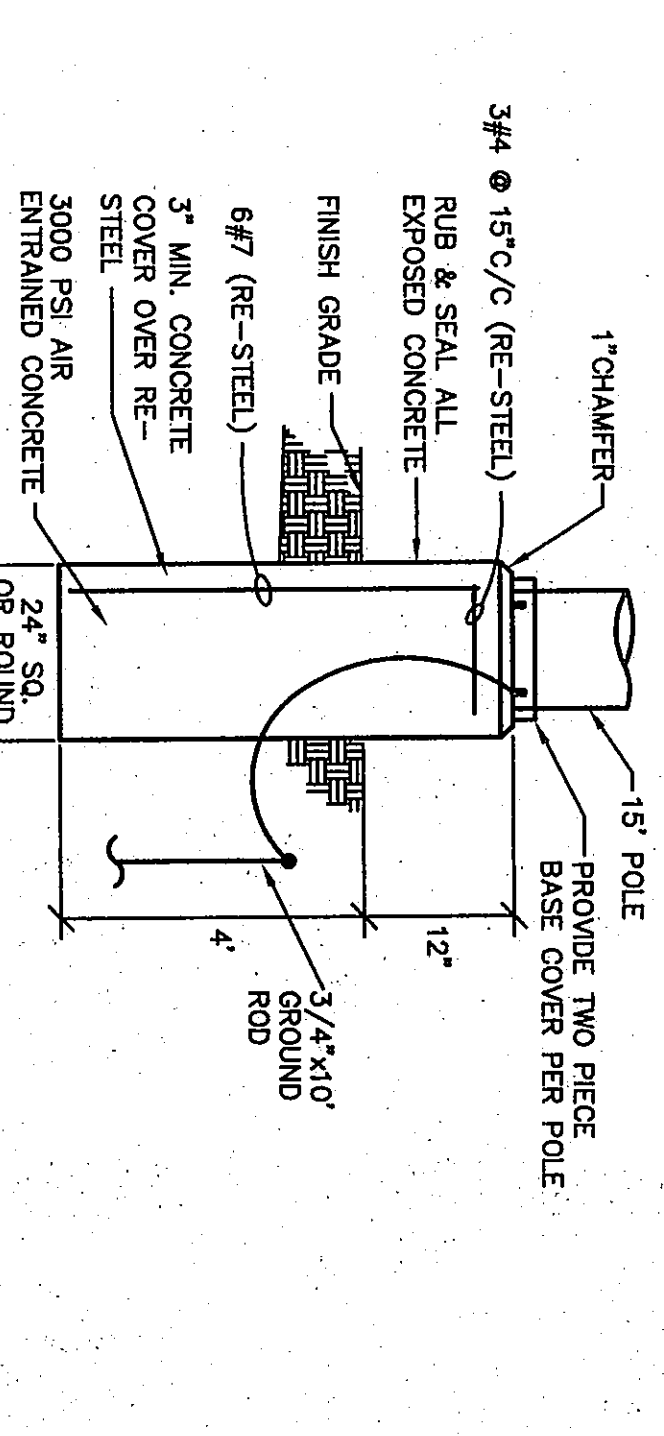
2 CEILING DROP CORD RECEPTACLE
NO SCALE



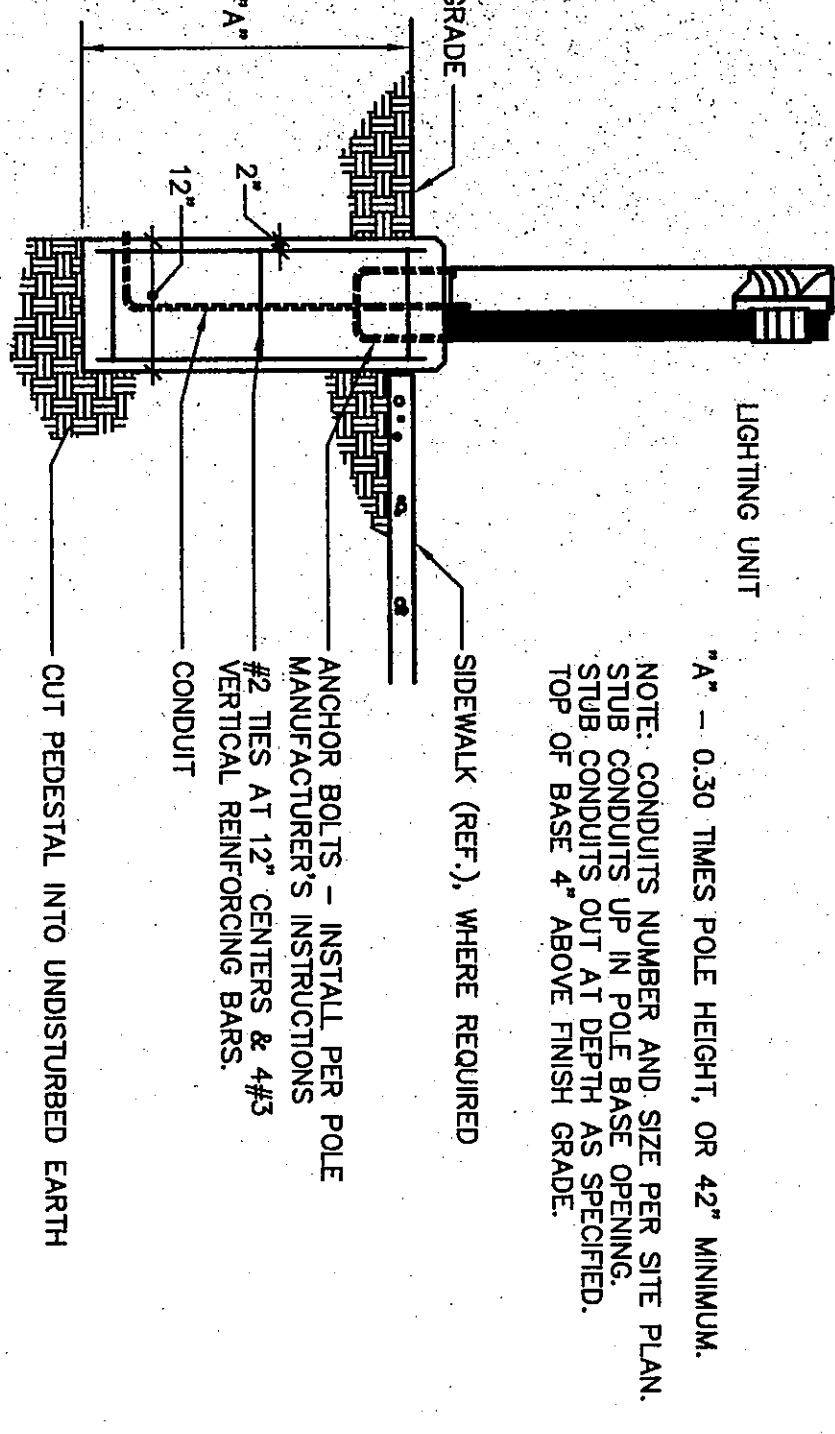
3 BUS DROP AND STRAIN RELIEF SYSTEM
NO SCALE



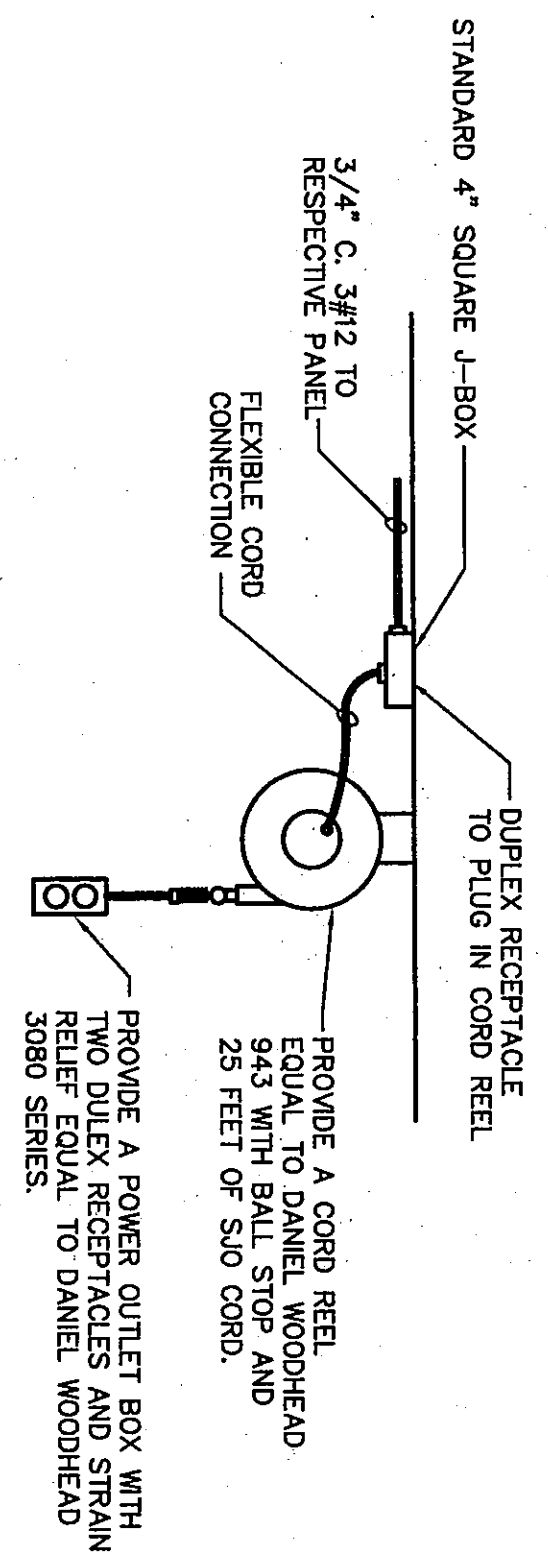
5 LIGHTING POLE FOUNDATION DETAIL
30\"/>



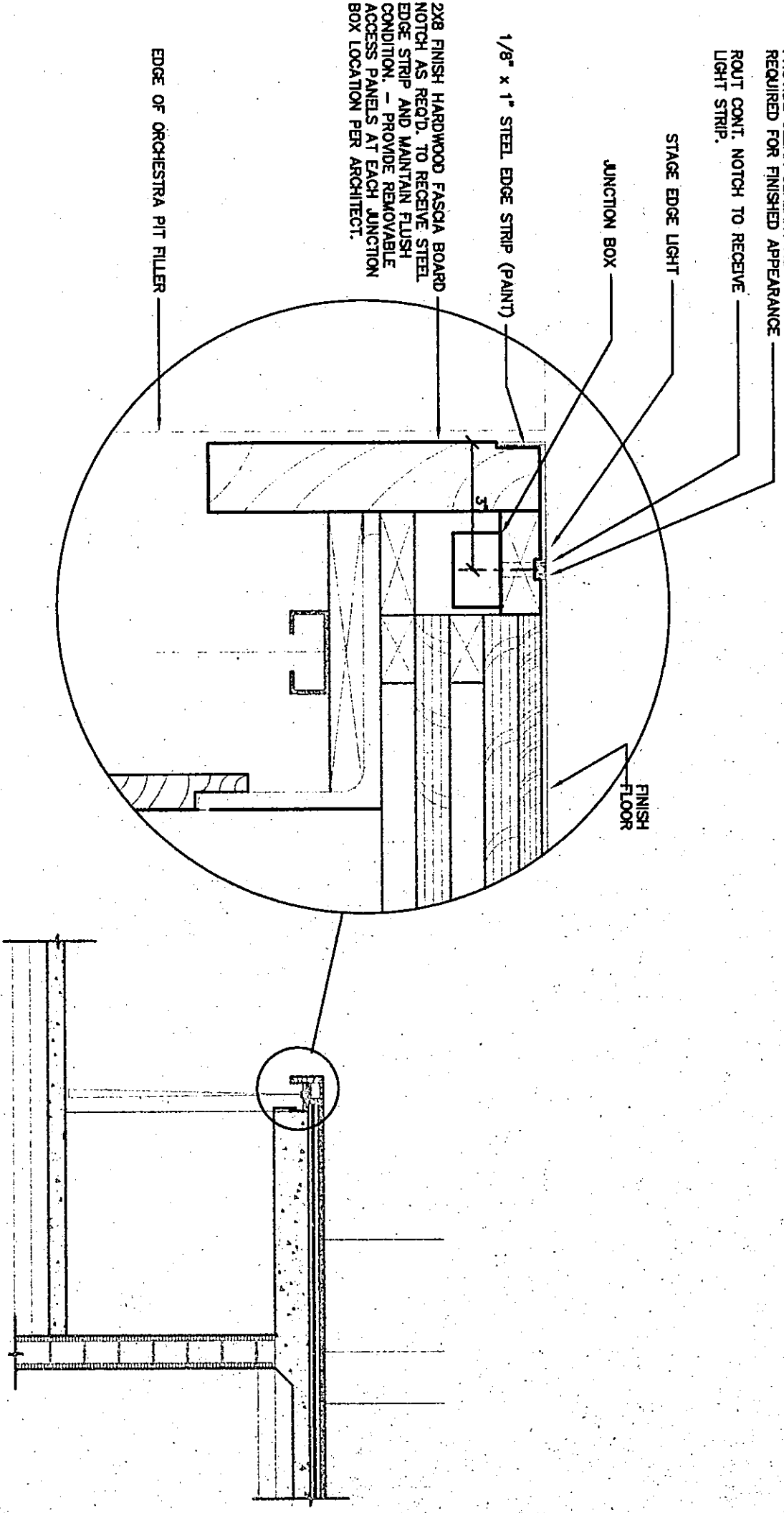
6 LIGHTING POLE FOUNDATION DETAIL
(15\"/>



7 LIGHTING POLE FOUNDATION
(MB-1 BOLLARD FIXT) NO SCALE

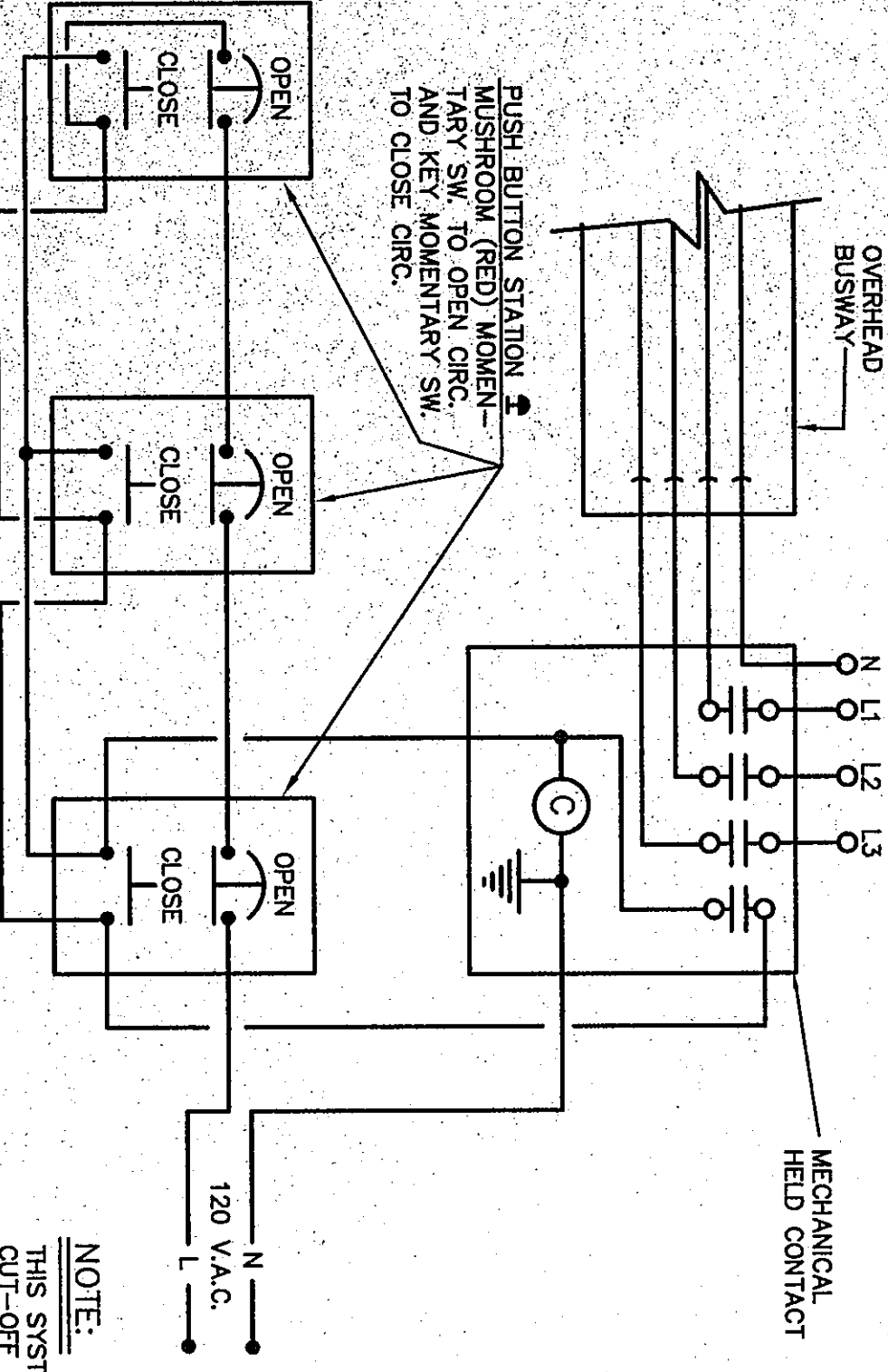


8 BENCH TABLE SERVICE CONNECTION
NO SCALE

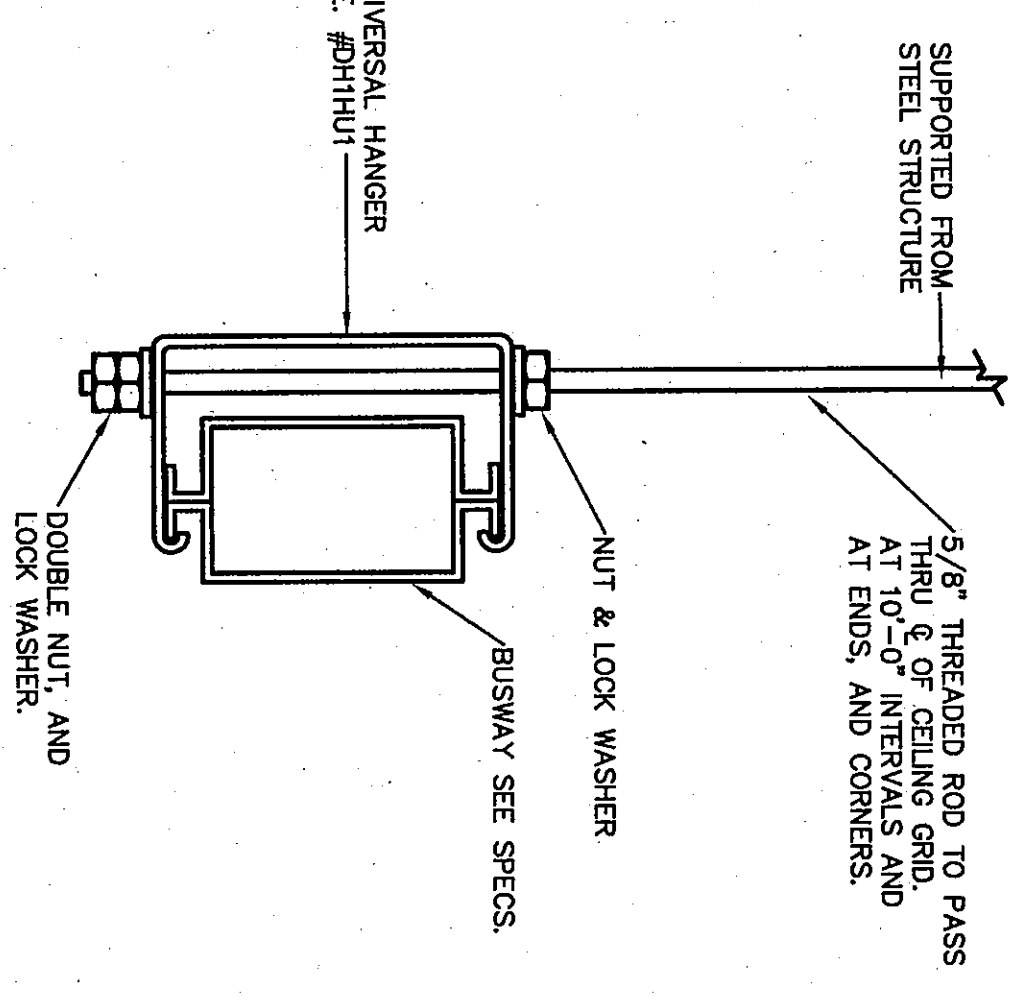


9 STAGE EDGE LIGHT DETAIL
NO SCALE

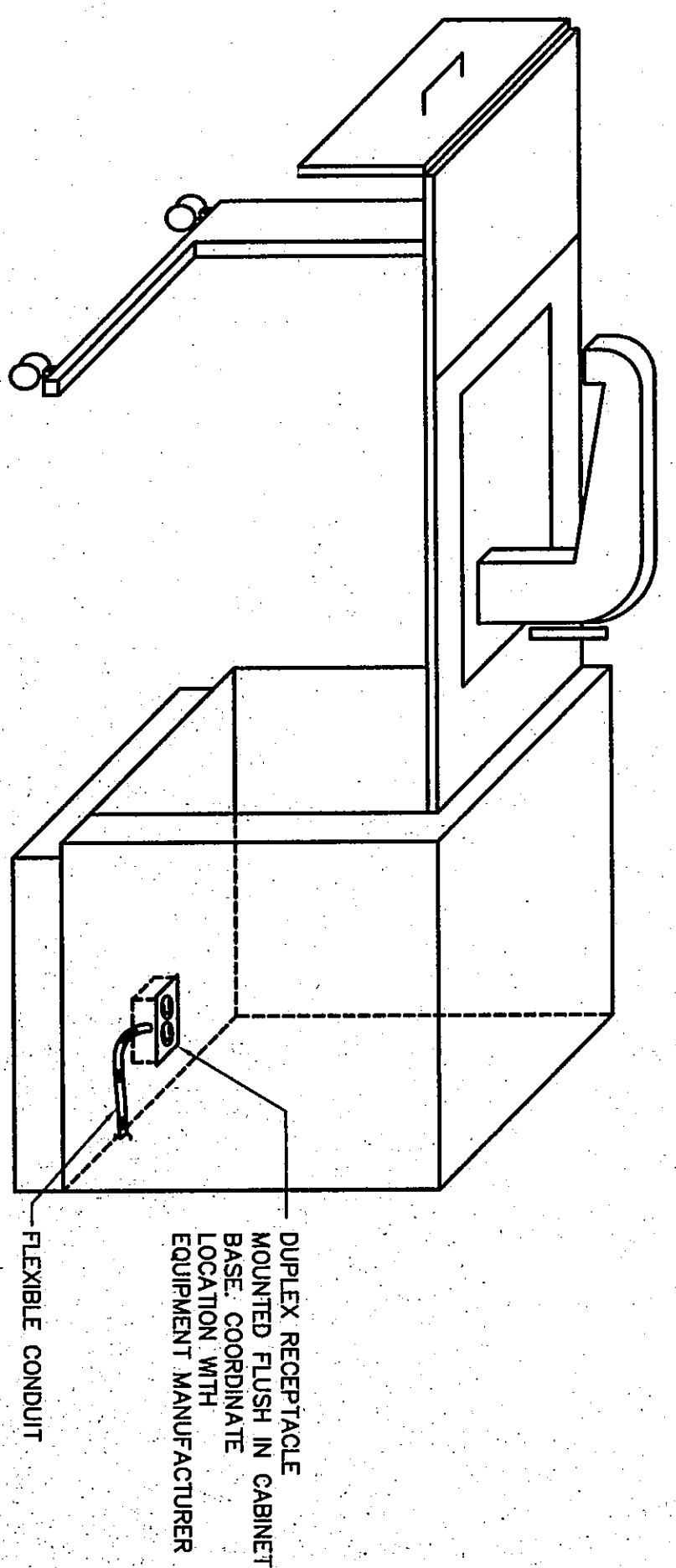
PANELBOARD OR DIST. PANEL



10 PANIC CUT-OFF SWITCHING
DIAGRAM OF OVERHEAD BUSWAY
NO SCALE



11 OVERHEAD BUS SUPPORT DETAIL
NO SCALE



12 SEWING MACHINE DETAIL
NO SCALE

DETAILS

DRAWN BY: MRS COMM. NO.: 95067.00
CHECKED BY: WSH DATE: APRIL 21, 1997

E1.3

REVISIONS NO. DATE

Fanning/Howey Associates, Inc.
Architects Engineers Consultants

THE NEW
CHESTERTON HIGH SCHOOL
FOR THE
DUNELAND SCHOOL CORPORATION
CHESTERTON, INDIANA

COPYRIGHT 1997 BY FANNING/HOWEY ASSOCIATES, INC.