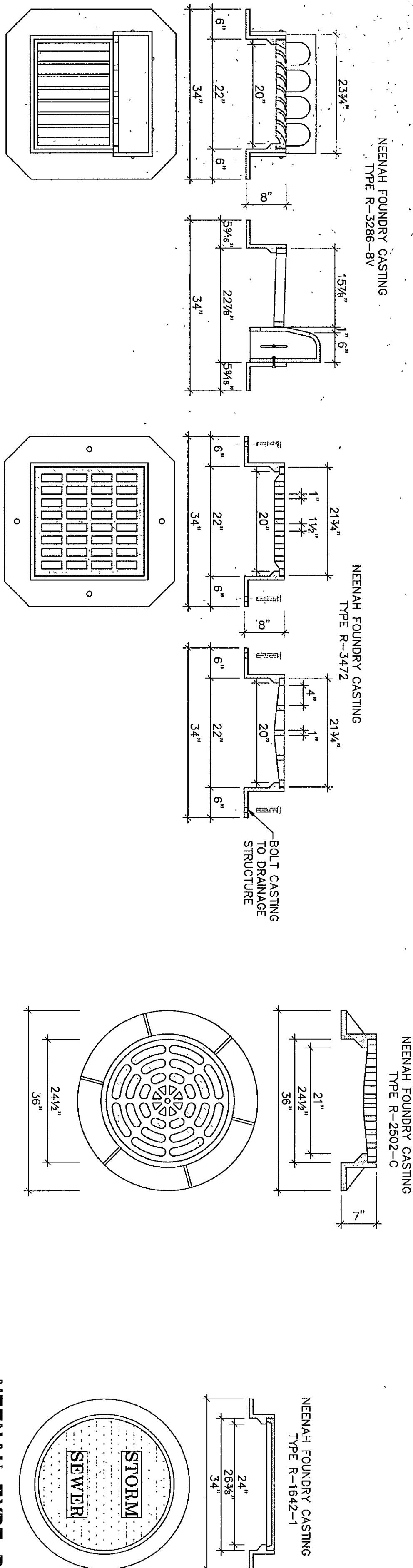


TYPICAL FRAME AND GRATE CASTINGS



NEENAH TYPE R-3286-BV

NEENAH TYPE R-3472

NEENAH TYPE R-2502-C

NEENAH TYPE R-1642-1

SCALE: 3/4" = 1'-0"

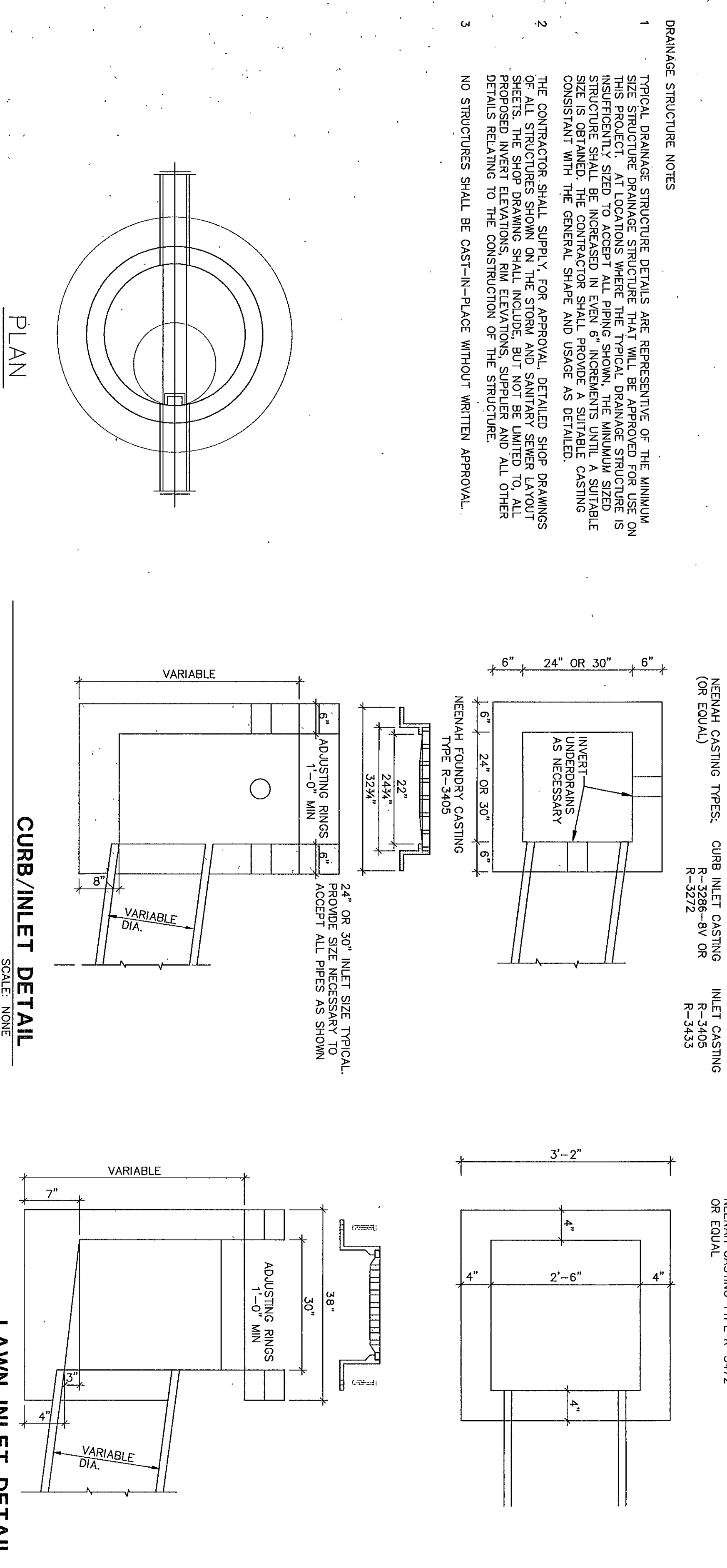
SCALE: 3/4" = 1'-0"

SCALE: 3/4" = 1'-0"

TYPICAL CASTING NOTES

- FRAME AND GRATE CASTINGS SHALL MANUFACTURED BY NEENAH OR EAST JORDAN IRON WORKS. OTHER MANUFACTURES MAY BE SUBSTITUTED BY SUBMITTING A SHOP DRAWING AND MATERIAL SPECIFICATIONS TO THE ARCHITECT. THE ARCHITECT SHALL APPROVE THE SUBSTITUTION. THE CONTRACTOR SHALL BE RESPONSIBLE FOR THE DIMENSIONAL FIT OF THE CASTING TO THE STRUCTURE.
- FRAME AND GRATE DETAILS ARE REPRESENTATIVE OF THE MINIMUM FRAME AND GRATE DETAILS. THE CONTRACTOR SHALL PROVIDE THE DETAILS AS SHOWN IF THE CASTING IS APPROVED. THE CONTRACTOR SHALL BE RESPONSIBLE FOR THE DIMENSIONAL FIT OF THE CASTING TO THE STRUCTURE.
- ALL STORM SEWER MANHOLES WITH SOLID LID SHALL BE LETTERED AS SHOWN.
- ALL SANITARY SEWER MANHOLES SHALL BE LETTERED AS SHOWN.

STANDARD DRAINAGE STRUCTURES



NEENAH CASTING TYPES: CURB INLET CASTING R-3272 OR EQUAL, INLET CASTING R-3405 OR EQUAL

NEENAH CASTING TYPE R-3472 OR EQUAL

NEENAH TYPE R-1610

NEENAH TYPE R-3405

SCALE: 3/4" = 1'-0"

SCALE: 3/4" = 1'-0"

- TYPICAL DRAINAGE STRUCTURE DETAILS ARE REPRESENTATIVE OF THE MINIMUM SIZE STRUCTURE DRAINAGE STRUCTURE THAT WILL BE APPROVED FOR USE ON THIS PROJECT. AT LOCATIONS WHERE THE TYPICAL DRAINAGE STRUCTURE IS NOT SUITABLE, THE CONTRACTOR SHALL PROVIDE A SUITABLE DRAINAGE STRUCTURE. THE CONTRACTOR SHALL BE RESPONSIBLE FOR THE DIMENSIONAL FIT OF THE CASTING TO THE STRUCTURE.
- THE CONTRACTOR SHALL SUPPLY, FOR APPROVAL, DETAILED SHOP DRAWINGS OF ALL STRUCTURES SHOWN ON THE STORM AND SANITARY SEWER LAYOUT. THE CONTRACTOR SHALL BE RESPONSIBLE FOR THE DIMENSIONAL FIT OF THE CASTING TO THE STRUCTURE.
- NO STRUCTURES SHALL BE CAST-IN-PLACE WITHOUT WRITTEN APPROVAL.

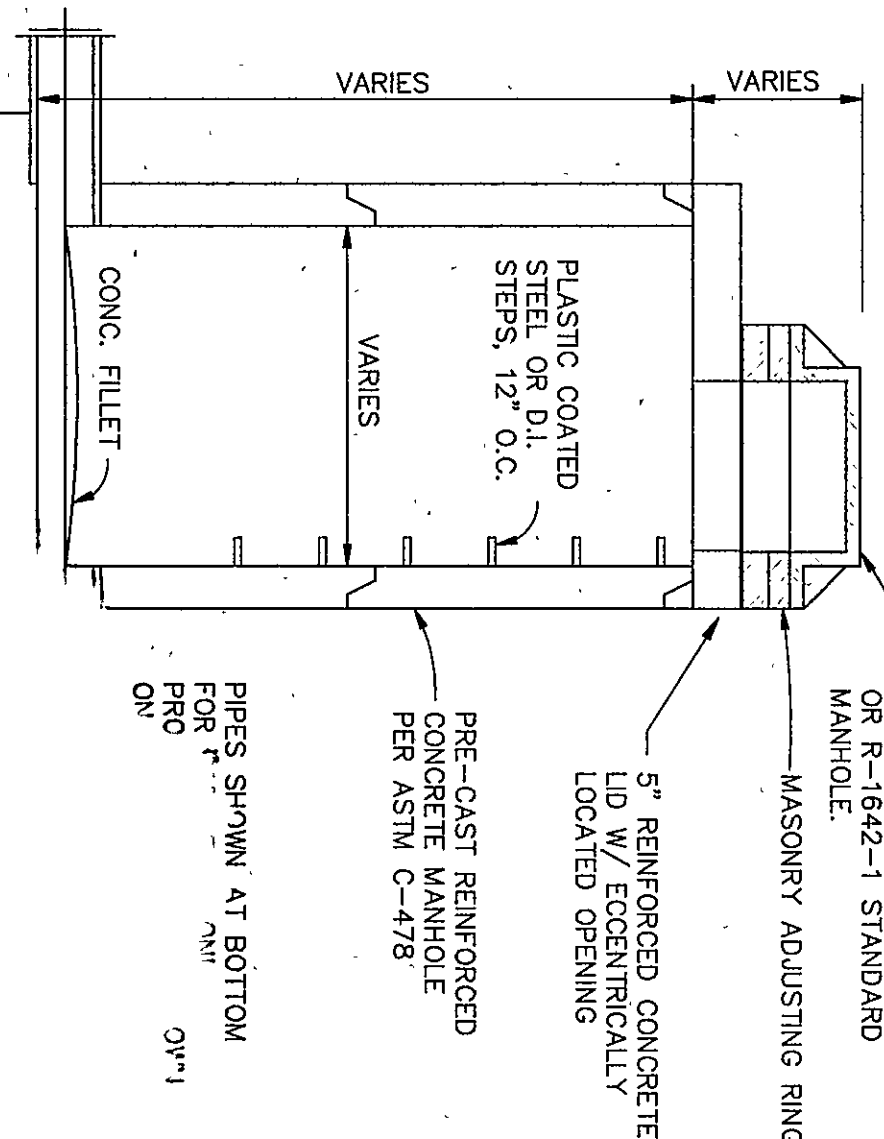
PLAN

CURB/INLET DETAIL

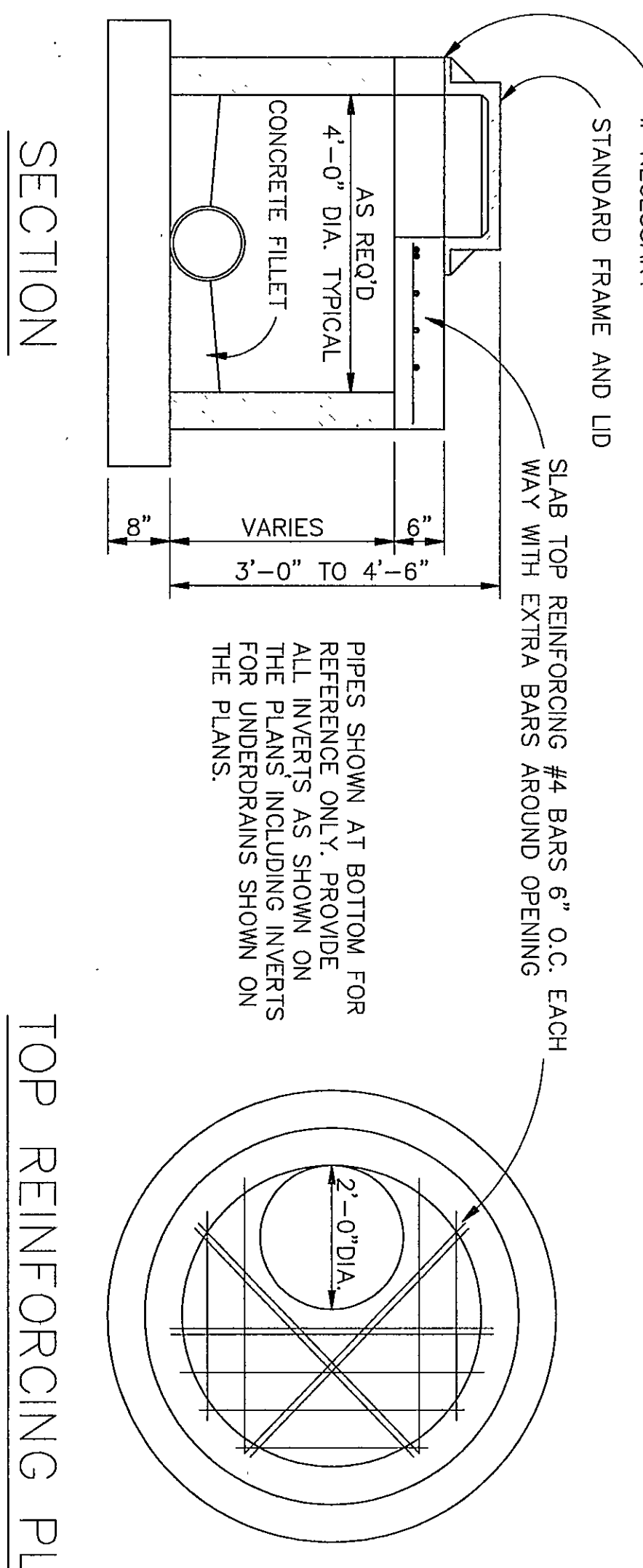
LAWN INLET DETAIL

SCALE: NONE

SCALE: 3/4" = 1'-0"



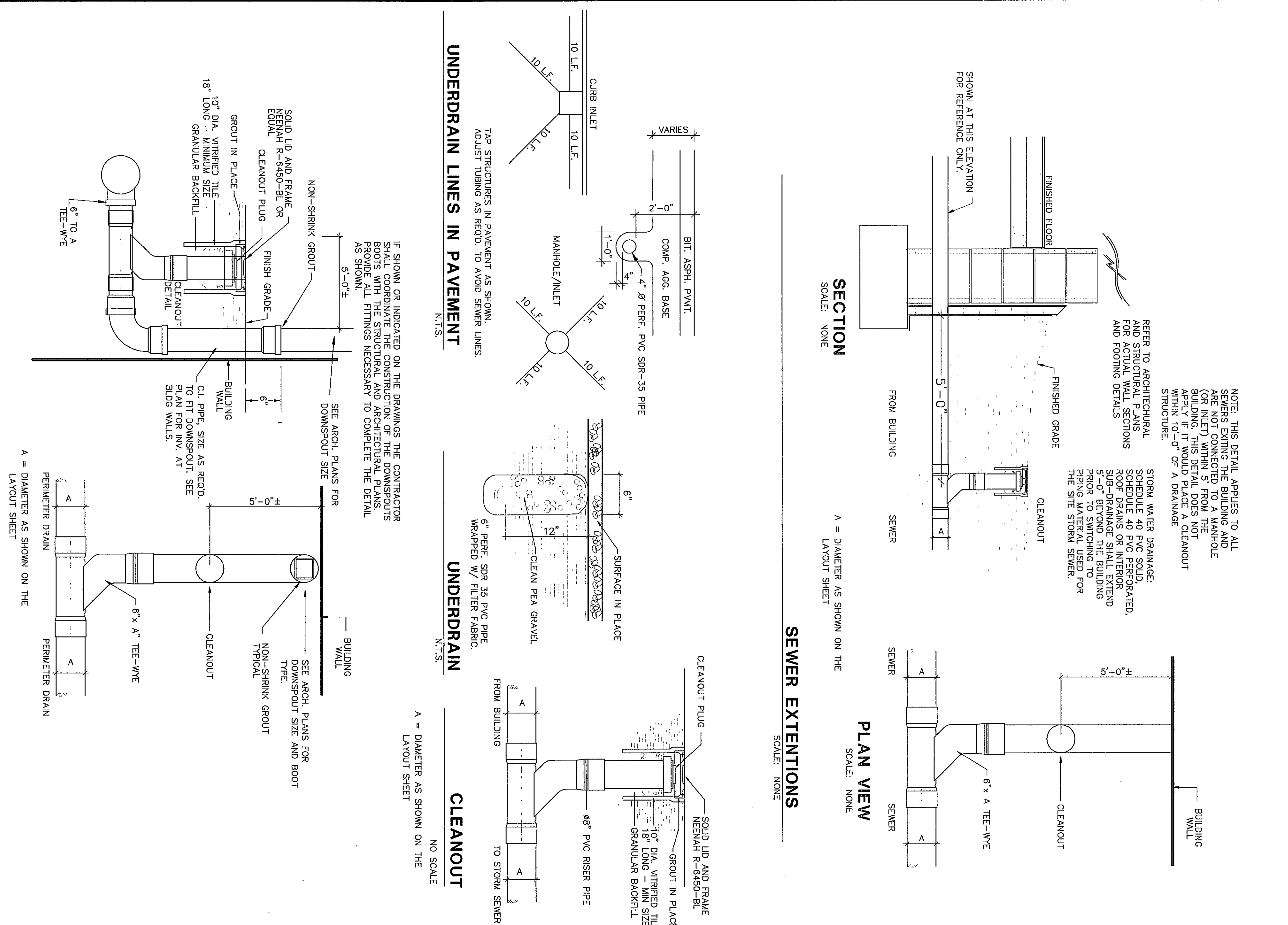
SECT



STANDARD PP

STANDARD MANHOLE 3'-0" TO 4'-6" DEPTH

STANDARD CONSTRUCTION



SECTION

PLAN VIEW

SEWER EXTENSIONS

SCALE: NONE

SCALE: NONE

SCALE: NONE

UNDERDRAIN LINES IN PAVEMENT

UNDERDRAIN

CLEANOUT

N.T.S.

N.T.S.

NO SCALE

DOWNSPOUT BOOT DETAIL

PLAN VIEW

SCALE: NONE

SCALE: NONE

STANDARD CONSTRUCTION NOTES

- ALL STORM PIPES TO BE R.C.P. CLASS III, SDR-35, H.D.P.E. OR CORRUGATED P.V.C. UNLESS SPECIFIED OTHERWISE ON THE PLANS TO SPECIFICATIONS WHERE STORM SEWERS OR SANITARY SEWERS CROSS WATER LINES.
- THE TERM "FIELD VERIFY" AS RELATED TO THE STORM SEWER PLANS IS DEFINED AS A COMPLETE EXPOSURE OF THE PIPE, MANHOLE OR OTHER DRAINAGE RELATED ITEM, TAKE FIELD SURVEY MEASUREMENTS TO THE EXISTING MATERIAL TYPE AND/OR OTHER RELATED FEATURES.
- ALL DEVIATIONS FROM PLANNED INVERTS, STRUCTURE LOCATION OR R/W ELEVATION SHALL BE REPORTED TO LEFT MARGIN, PHONE 1-219-872-0933 FOR APPROVAL OR REDSIGN AS NECESSARY.
- ALL PIPES DISTANCES SHOWN ARE APPROXIMATE. THE DISTANCE IS THE APPROXIMATE DISTANCE CENTER TO CENTER BETWEEN STRUCTURES. IF A STRUCTURE COMPONENT (Manhole/Inlet) IS SHOWN ON THIS DRAWING IT REFERENCES THE APPROXIMATE CENTER OF THE STRUCTURE.
- THE CONTRACTOR SHALL REMAIN RESPONSIBLE FOR THE EXISTING BIRMINGHAM PAVEMENT ON A 3' DIA. PATCHING TO BE CONSTRUCTED IN ACCORDANCE WITH THE CITY OF BIRMINGHAM SPECIFICATIONS.

STORM SEWER DETAILS

DRAWN BY: JDW RCR COMM. NO.: 95067.00
CHECKED BY: JDW DATE: APRIL 21, 1997

SU1.5

REVISIONS NO. DATE

Fanning/Howey Associates, Inc.
Architects Engineers Consultants

THE NEW CHESTERTON HIGH SCHOOL FOR THE DUNELAND SCHOOL CORPORATION CHESTERTON, INDIANA

COPYRIGHT 1997 BY FANNING/HOWEY ASSOCIATES, INC.

STATE OF INDIANA
ARCHITECT
60920306
1/1/97