

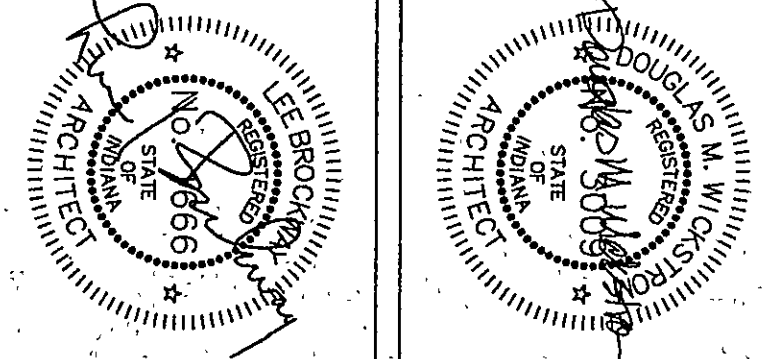
NOTE:
FOR ADDITIONAL MASONRY BOND BEAM
AND MASONRY UNITS, INFORMATION
SEE S3.1 to S3.9 & S5.1 to S5.9

KEYNOTES

1. FINISH GRADE - REFER TO SITE DRAWINGS.
2. CONCRETE FOOTING - REFER TO STRUCTURAL DRAWINGS.
3. FOUNDATION WALL - REFER TO STRUCTURAL DRAWINGS.
4. 2" FIBER-REINFORCED CONCRETE INSULATION - REFER TO OVER 4" DRAINAGE FILL.
5. 4" DRAINAGE FILL - REFER TO STRUCTURAL CONCRETE SLAB - REFER TO STRUCTURAL CONCRETE SLAB.
6. 3/4" DIA. X 8" ANCHOR BOLT WITH HOOK AT 32" O.C. BY SECTION 0450.
7. 1/2" DIA. X 8" ANCHOR BOLT WITH HOOK AT 32" O.C. BY SECTION 0450.
8. 1/2" DIA. X 8" ANCHOR BOLT WITH HOOK AT 32" O.C. BY SECTION 0450.
9. 1/2" DIA. X 8" ANCHOR BOLT WITH HOOK AT 32" O.C. BY SECTION 0450.
10. 1/2" DIA. X 8" ANCHOR BOLT WITH HOOK AT 32" O.C. BY SECTION 0450.
11. 1/2" DIA. X 8" ANCHOR BOLT WITH HOOK AT 32" O.C. BY SECTION 0450.
12. 1/2" DIA. X 8" ANCHOR BOLT WITH HOOK AT 32" O.C. BY SECTION 0450.
13. 1/2" DIA. X 8" ANCHOR BOLT WITH HOOK AT 32" O.C. BY SECTION 0450.
14. 1/2" DIA. X 8" ANCHOR BOLT WITH HOOK AT 32" O.C. BY SECTION 0450.
15. 1/2" DIA. X 8" ANCHOR BOLT WITH HOOK AT 32" O.C. BY SECTION 0450.
16. 1/2" DIA. X 8" ANCHOR BOLT WITH HOOK AT 32" O.C. BY SECTION 0450.
17. 1/2" DIA. X 8" ANCHOR BOLT WITH HOOK AT 32" O.C. BY SECTION 0450.
18. 1/2" DIA. X 8" ANCHOR BOLT WITH HOOK AT 32" O.C. BY SECTION 0450.
19. 1/2" DIA. X 8" ANCHOR BOLT WITH HOOK AT 32" O.C. BY SECTION 0450.
20. 1/2" DIA. X 8" ANCHOR BOLT WITH HOOK AT 32" O.C. BY SECTION 0450.
21. 1/2" DIA. X 8" ANCHOR BOLT WITH HOOK AT 32" O.C. BY SECTION 0450.
22. 1/2" DIA. X 8" ANCHOR BOLT WITH HOOK AT 32" O.C. BY SECTION 0450.
23. 1/2" DIA. X 8" ANCHOR BOLT WITH HOOK AT 32" O.C. BY SECTION 0450.
24. 1/2" DIA. X 8" ANCHOR BOLT WITH HOOK AT 32" O.C. BY SECTION 0450.
25. 1/2" DIA. X 8" ANCHOR BOLT WITH HOOK AT 32" O.C. BY SECTION 0450.
26. 1/2" DIA. X 8" ANCHOR BOLT WITH HOOK AT 32" O.C. BY SECTION 0450.
27. 1/2" DIA. X 8" ANCHOR BOLT WITH HOOK AT 32" O.C. BY SECTION 0450.
28. 1/2" DIA. X 8" ANCHOR BOLT WITH HOOK AT 32" O.C. BY SECTION 0450.
29. 1/2" DIA. X 8" ANCHOR BOLT WITH HOOK AT 32" O.C. BY SECTION 0450.
30. 1/2" DIA. X 8" ANCHOR BOLT WITH HOOK AT 32" O.C. BY SECTION 0450.
31. 1/2" DIA. X 8" ANCHOR BOLT WITH HOOK AT 32" O.C. BY SECTION 0450.
32. 1/2" DIA. X 8" ANCHOR BOLT WITH HOOK AT 32" O.C. BY SECTION 0450.
33. 1/2" DIA. X 8" ANCHOR BOLT WITH HOOK AT 32" O.C. BY SECTION 0450.
34. 1/2" DIA. X 8" ANCHOR BOLT WITH HOOK AT 32" O.C. BY SECTION 0450.
35. 1/2" DIA. X 8" ANCHOR BOLT WITH HOOK AT 32" O.C. BY SECTION 0450.
36. 1/2" DIA. X 8" ANCHOR BOLT WITH HOOK AT 32" O.C. BY SECTION 0450.
37. 1/2" DIA. X 8" ANCHOR BOLT WITH HOOK AT 32" O.C. BY SECTION 0450.
38. 1/2" DIA. X 8" ANCHOR BOLT WITH HOOK AT 32" O.C. BY SECTION 0450.
39. 1/2" DIA. X 8" ANCHOR BOLT WITH HOOK AT 32" O.C. BY SECTION 0450.
40. 1/2" DIA. X 8" ANCHOR BOLT WITH HOOK AT 32" O.C. BY SECTION 0450.
41. 1/2" DIA. X 8" ANCHOR BOLT WITH HOOK AT 32" O.C. BY SECTION 0450.
42. 1/2" DIA. X 8" ANCHOR BOLT WITH HOOK AT 32" O.C. BY SECTION 0450.
43. 1/2" DIA. X 8" ANCHOR BOLT WITH HOOK AT 32" O.C. BY SECTION 0450.
44. 1/2" DIA. X 8" ANCHOR BOLT WITH HOOK AT 32" O.C. BY SECTION 0450.
45. 1/2" DIA. X 8" ANCHOR BOLT WITH HOOK AT 32" O.C. BY SECTION 0450.
46. 1/2" DIA. X 8" ANCHOR BOLT WITH HOOK AT 32" O.C. BY SECTION 0450.
47. 1/2" DIA. X 8" ANCHOR BOLT WITH HOOK AT 32" O.C. BY SECTION 0450.
48. 1/2" DIA. X 8" ANCHOR BOLT WITH HOOK AT 32" O.C. BY SECTION 0450.
49. 1/2" DIA. X 8" ANCHOR BOLT WITH HOOK AT 32" O.C. BY SECTION 0450.
50. 1/2" DIA. X 8" ANCHOR BOLT WITH HOOK AT 32" O.C. BY SECTION 0450.
51. 1/2" DIA. X 8" ANCHOR BOLT WITH HOOK AT 32" O.C. BY SECTION 0450.
52. 1/2" DIA. X 8" ANCHOR BOLT WITH HOOK AT 32" O.C. BY SECTION 0450.
53. 1/2" DIA. X 8" ANCHOR BOLT WITH HOOK AT 32" O.C. BY SECTION 0450.
54. 1/2" DIA. X 8" ANCHOR BOLT WITH HOOK AT 32" O.C. BY SECTION 0450.
55. 1/2" DIA. X 8" ANCHOR BOLT WITH HOOK AT 32" O.C. BY SECTION 0450.
56. 1/2" DIA. X 8" ANCHOR BOLT WITH HOOK AT 32" O.C. BY SECTION 0450.
57. 1/2" DIA. X 8" ANCHOR BOLT WITH HOOK AT 32" O.C. BY SECTION 0450.
58. 1/2" DIA. X 8" ANCHOR BOLT WITH HOOK AT 32" O.C. BY SECTION 0450.
59. 1/2" DIA. X 8" ANCHOR BOLT WITH HOOK AT 32" O.C. BY SECTION 0450.
60. 1/2" DIA. X 8" ANCHOR BOLT WITH HOOK AT 32" O.C. BY SECTION 0450.
61. 1/2" DIA. X 8" ANCHOR BOLT WITH HOOK AT 32" O.C. BY SECTION 0450.
62. 1/2" DIA. X 8" ANCHOR BOLT WITH HOOK AT 32" O.C. BY SECTION 0450.
63. 1/2" DIA. X 8" ANCHOR BOLT WITH HOOK AT 32" O.C. BY SECTION 0450.
64. 1/2" DIA. X 8" ANCHOR BOLT WITH HOOK AT 32" O.C. BY SECTION 0450.
65. 1/2" DIA. X 8" ANCHOR BOLT WITH HOOK AT 32" O.C. BY SECTION 0450.
66. 1/2" DIA. X 8" ANCHOR BOLT WITH HOOK AT 32" O.C. BY SECTION 0450.
67. 1/2" DIA. X 8" ANCHOR BOLT WITH HOOK AT 32" O.C. BY SECTION 0450.
68. 1/2" DIA. X 8" ANCHOR BOLT WITH HOOK AT 32" O.C. BY SECTION 0450.
69. 1/2" DIA. X 8" ANCHOR BOLT WITH HOOK AT 32" O.C. BY SECTION 0450.
70. 1/2" DIA. X 8" ANCHOR BOLT WITH HOOK AT 32" O.C. BY SECTION 0450.
71. 1/2" DIA. X 8" ANCHOR BOLT WITH HOOK AT 32" O.C. BY SECTION 0450.
72. 1/2" DIA. X 8" ANCHOR BOLT WITH HOOK AT 32" O.C. BY SECTION 0450.
73. 1/2" DIA. X 8" ANCHOR BOLT WITH HOOK AT 32" O.C. BY SECTION 0450.
74. 1/2" DIA. X 8" ANCHOR BOLT WITH HOOK AT 32" O.C. BY SECTION 0450.
75. 1/2" DIA. X 8" ANCHOR BOLT WITH HOOK AT 32" O.C. BY SECTION 0450.
76. 1/2" DIA. X 8" ANCHOR BOLT WITH HOOK AT 32" O.C. BY SECTION 0450.
77. 1/2" DIA. X 8" ANCHOR BOLT WITH HOOK AT 32" O.C. BY SECTION 0450.
78. 1/2" DIA. X 8" ANCHOR BOLT WITH HOOK AT 32" O.C. BY SECTION 0450.
79. 1/2" DIA. X 8" ANCHOR BOLT WITH HOOK AT 32" O.C. BY SECTION 0450.
80. 1/2" DIA. X 8" ANCHOR BOLT WITH HOOK AT 32" O.C. BY SECTION 0450.
81. 1/2" DIA. X 8" ANCHOR BOLT WITH HOOK AT 32" O.C. BY SECTION 0450.
82. 1/2" DIA. X 8" ANCHOR BOLT WITH HOOK AT 32" O.C. BY SECTION 0450.

THE NEW
CHESTERTON HIGH SCHOOL
FOR THE
DUNELAND SCHOOL CORPORATION
CHESTERTON, INDIANA

COPYRIGHT 1997 BY FANNING/HOWEY ASSOCIATES, INC.

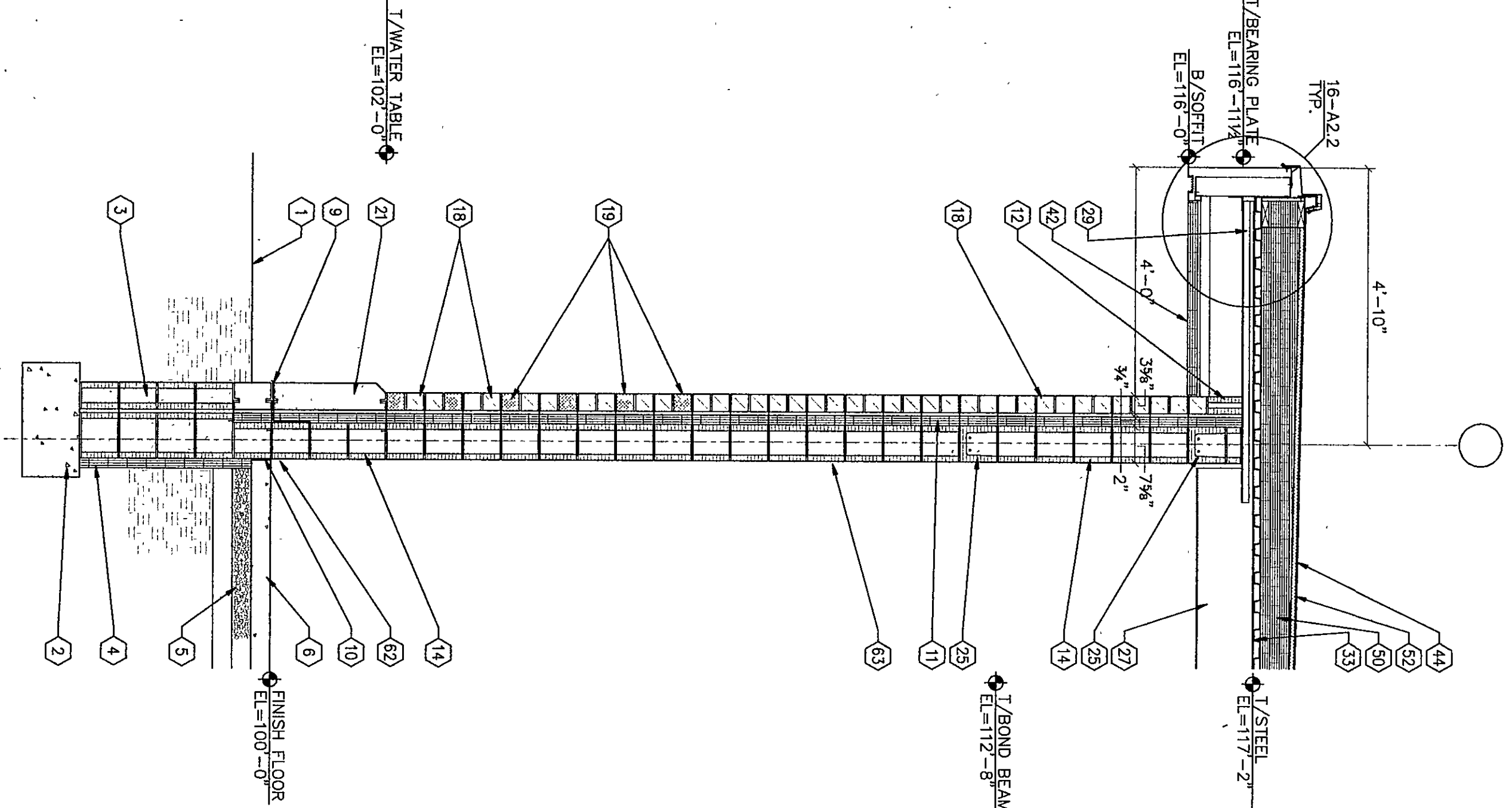


Fanning/Howey Associates, Inc.
Architects Engineers Consultants

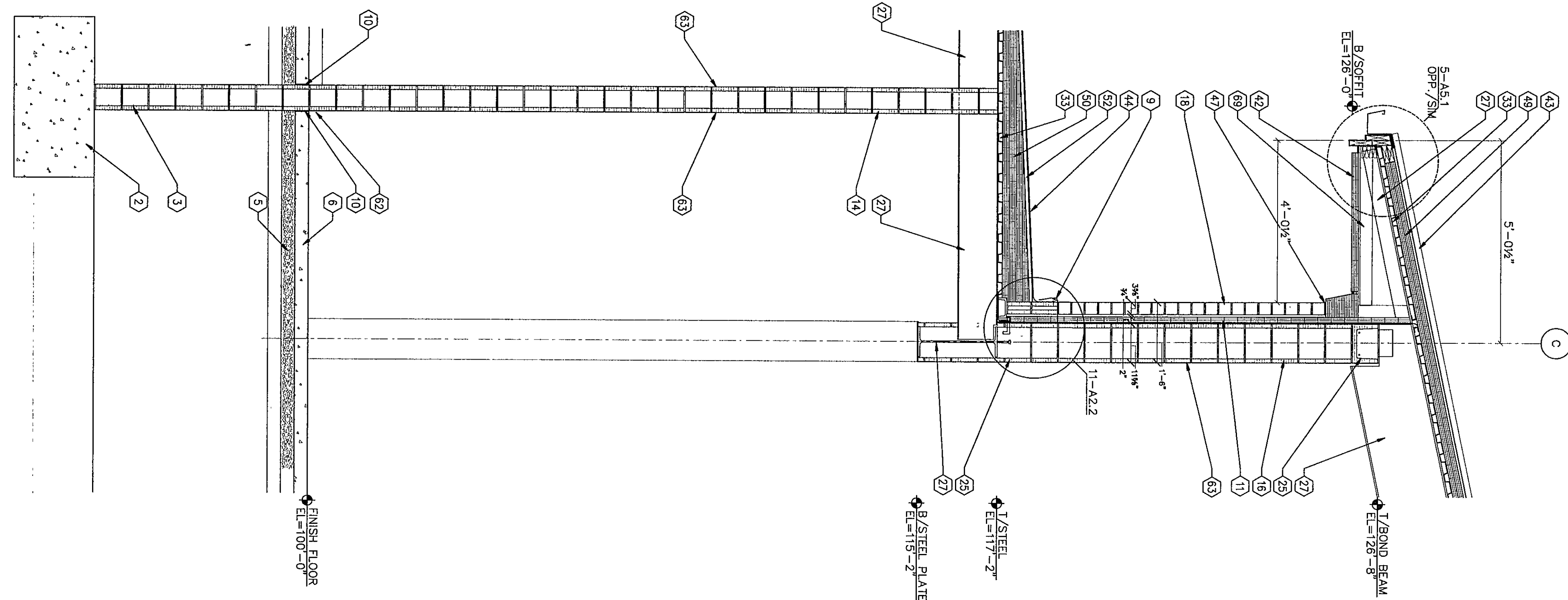
WALL SECTIONS	
DRAWN BY: D.M.R.	COMM. NO.: 95067.00
CHECKED BY: LEC	DATE: APRIL 21, 1997
REVISIONS NO. DATE	
A5.25	

CHESTERTON HIGH SCHOOL
05/03/97

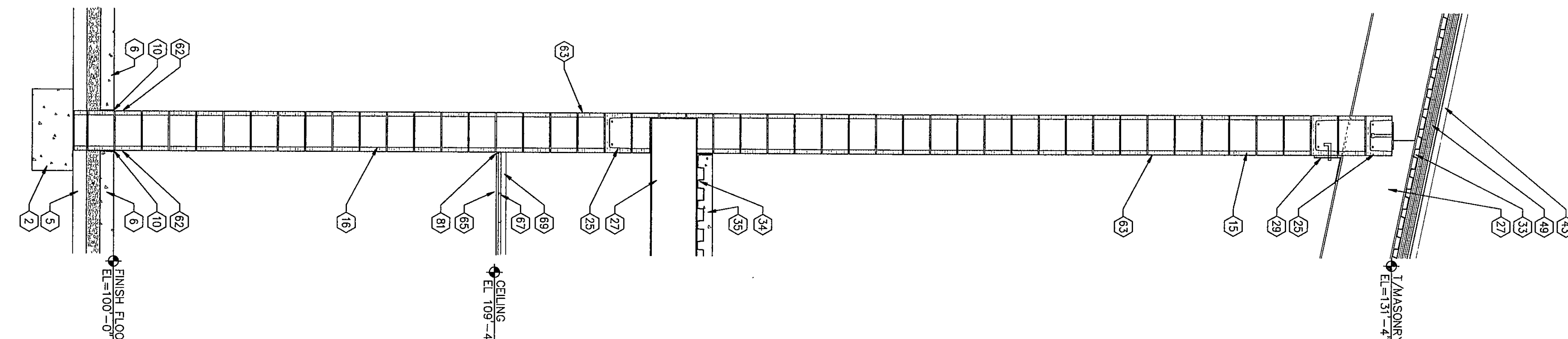
4 WALL SECTION
1/2"=1'-0"



3 WALL SECTION
1/2"=1'-0"



2 WALL SECTION
1/2"=1'-0"



1 WALL SECTION
1/2"=1'-0"

