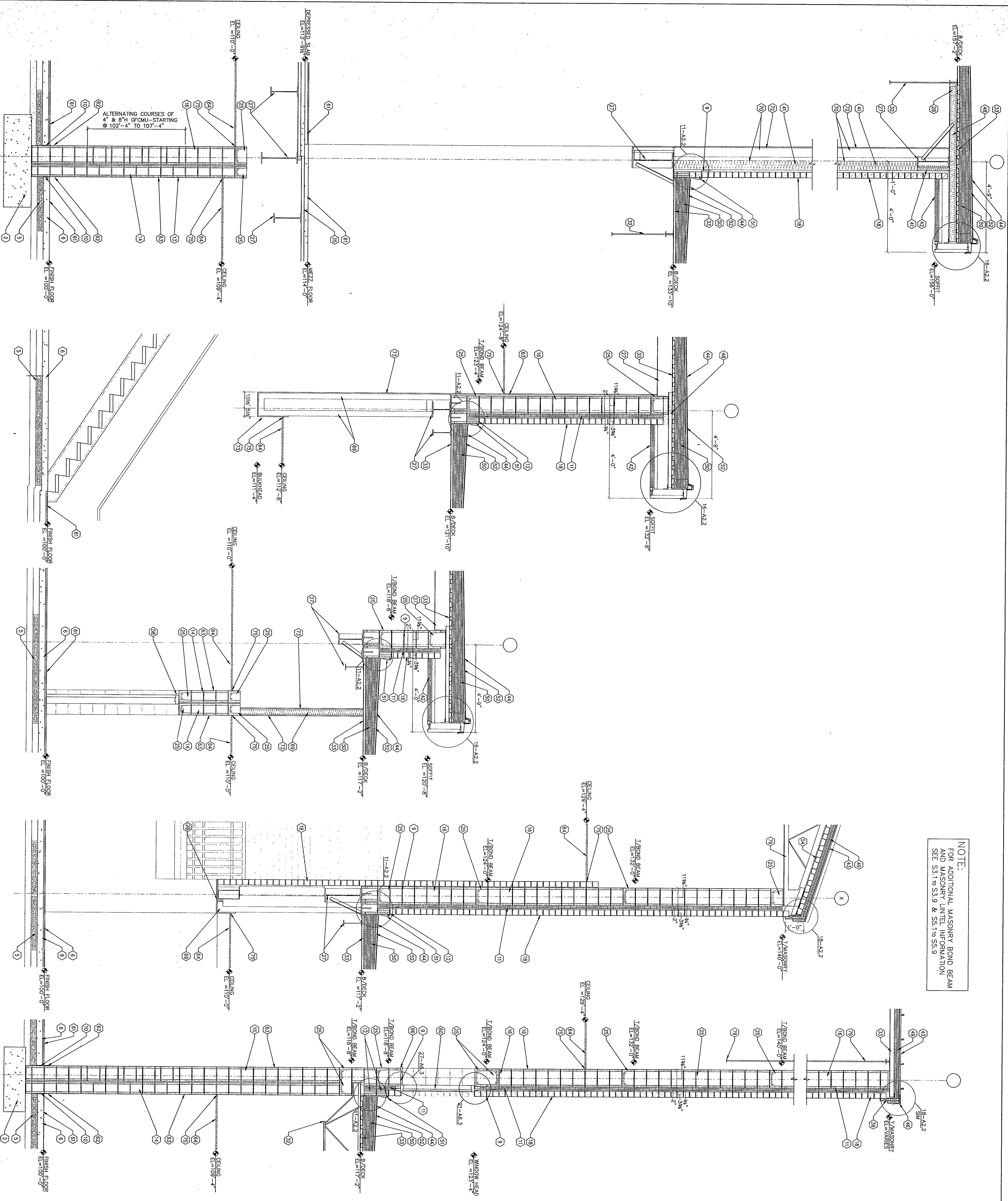


NOTE:
FOR ADDITIONAL MASONRY BOND BEAM
AND MASONRY UNITS INFORMATION
SEE S3.1 to S3.9 & S5.1 to S5.9



KEYNOTES

1. FINISH GRADE - REFER TO SITE DRAWINGS.
2. CONCRETE FOOTING - REFER TO STRUCTURAL DRAWINGS.
3. FOUNDATION WALL - REFER TO STRUCTURAL DRAWINGS.
4. 2" PERIMETER INSULATION - REFER TO SECTION 04200.
5. 4" DRAINAGE FILL OVER 4" DRAINAGE BARRIER - REFER TO SECTION 04200.
6. CONCRETE SLAB - REFER TO STRUCTURAL DRAWINGS.
7. 3/4" DIA. X 8" ANCHOR BOLT WITH HOOK AT 32" O.C. BY SECTION 04200.
8. 3/4" DIA. X 8" ANCHOR BOLT WITH HOOK AT 32" O.C. BY SECTION 04200.
9. THRU-WALL FLASHING WITH KEEL HOLES REFER TO SECTION 04200 AND 04200.
10. 1/2" EXPANSION JOINT MATERIAL - REFER TO SECTION 04200.
11. 1/2" EXPANSION JOINT MATERIAL - REFER TO SECTION 04200.
12. 4" CONCRETE MASONRY UNIT - REFER TO SECTION 04200.
13. 4" CONCRETE MASONRY UNIT - REFER TO SECTION 04200.
14. 8" CONCRETE MASONRY UNIT - REFER TO SECTION 04200.
15. 12" CONCRETE MASONRY UNIT - REFER TO SECTION 04200.
16. 16" CONCRETE MASONRY UNIT - REFER TO SECTION 04200.
17. 20" CONCRETE MASONRY UNIT - REFER TO SECTION 04200.
18. FACE BRICK - COLOR "B" - REFER TO SECTION 04200.
19. FACE BRICK - COLOR "B" - REFER TO SECTION 04200.
20. CAST STONE - REFER TO SECTION 04200.
21. CAST STONE - REFER TO SECTION 04200.
22. CAST STONE - REFER TO SECTION 04200.
23. CAST STONE - REFER TO SECTION 04200.
24. CAST STONE - REFER TO SECTION 04200.
25. CAST STONE - REFER TO SECTION 04200.
26. CAST STONE - REFER TO SECTION 04200.
27. CAST STONE - REFER TO SECTION 04200.
28. CAST STONE - REFER TO SECTION 04200.
29. CAST STONE - REFER TO SECTION 04200.
30. CAST STONE - REFER TO SECTION 04200.
31. CAST STONE - REFER TO SECTION 04200.
32. CAST STONE - REFER TO SECTION 04200.
33. CAST STONE - REFER TO SECTION 04200.
34. CAST STONE - REFER TO SECTION 04200.
35. CAST STONE - REFER TO SECTION 04200.
36. CAST STONE - REFER TO SECTION 04200.
37. CAST STONE - REFER TO SECTION 04200.
38. CAST STONE - REFER TO SECTION 04200.
39. CAST STONE - REFER TO SECTION 04200.
40. CAST STONE - REFER TO SECTION 04200.
41. CAST STONE - REFER TO SECTION 04200.
42. CAST STONE - REFER TO SECTION 04200.
43. CAST STONE - REFER TO SECTION 04200.
44. CAST STONE - REFER TO SECTION 04200.
45. CAST STONE - REFER TO SECTION 04200.
46. CAST STONE - REFER TO SECTION 04200.
47. CAST STONE - REFER TO SECTION 04200.
48. CAST STONE - REFER TO SECTION 04200.
49. CAST STONE - REFER TO SECTION 04200.
50. CAST STONE - REFER TO SECTION 04200.
51. CAST STONE - REFER TO SECTION 04200.
52. CAST STONE - REFER TO SECTION 04200.
53. CAST STONE - REFER TO SECTION 04200.
54. CAST STONE - REFER TO SECTION 04200.
55. CAST STONE - REFER TO SECTION 04200.
56. CAST STONE - REFER TO SECTION 04200.
57. CAST STONE - REFER TO SECTION 04200.
58. CAST STONE - REFER TO SECTION 04200.
59. CAST STONE - REFER TO SECTION 04200.
60. CAST STONE - REFER TO SECTION 04200.
61. CAST STONE - REFER TO SECTION 04200.
62. CAST STONE - REFER TO SECTION 04200.
63. CAST STONE - REFER TO SECTION 04200.
64. CAST STONE - REFER TO SECTION 04200.
65. CAST STONE - REFER TO SECTION 04200.
66. CAST STONE - REFER TO SECTION 04200.
67. CAST STONE - REFER TO SECTION 04200.
68. CAST STONE - REFER TO SECTION 04200.
69. CAST STONE - REFER TO SECTION 04200.
70. CAST STONE - REFER TO SECTION 04200.
71. CAST STONE - REFER TO SECTION 04200.
72. CAST STONE - REFER TO SECTION 04200.
73. CAST STONE - REFER TO SECTION 04200.
74. CAST STONE - REFER TO SECTION 04200.
75. CAST STONE - REFER TO SECTION 04200.
76. CAST STONE - REFER TO SECTION 04200.
77. CAST STONE - REFER TO SECTION 04200.
78. CAST STONE - REFER TO SECTION 04200.
79. CAST STONE - REFER TO SECTION 04200.
80. CAST STONE - REFER TO SECTION 04200.
81. CAST STONE - REFER TO SECTION 04200.
82. CAST STONE - REFER TO SECTION 04200.

THE NEW
CHESTERTON HIGH SCHOOL
FOR THE
DUNELAND SCHOOL CORPORATION
CHESTERTON, INDIANA

COPYRIGHT 1997 BY FANNING/HOWEY ASSOCIATES, INC.

Fanning/Howey Associates, Inc.
Architects Engineers Consultants

WALL SECTIONS

DRAWN BY: DMR COMM. NO.: 95067.00
CHECKED BY: LEC DATE: APRIL 21, 1997

A5.22

REVISIONS NO. DATE

A5-A-A4