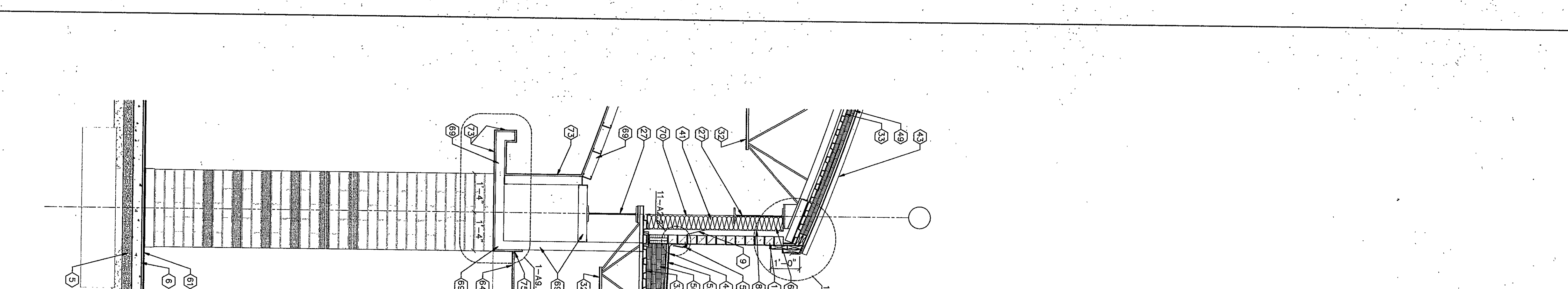
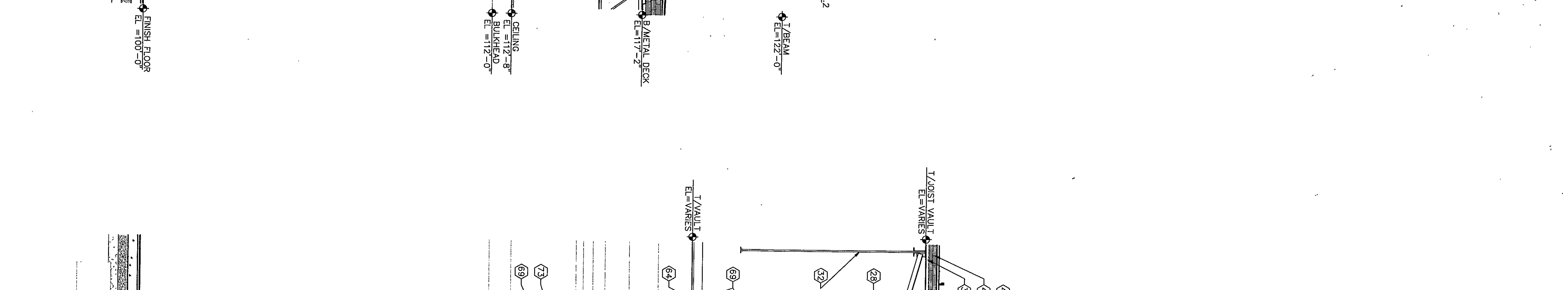
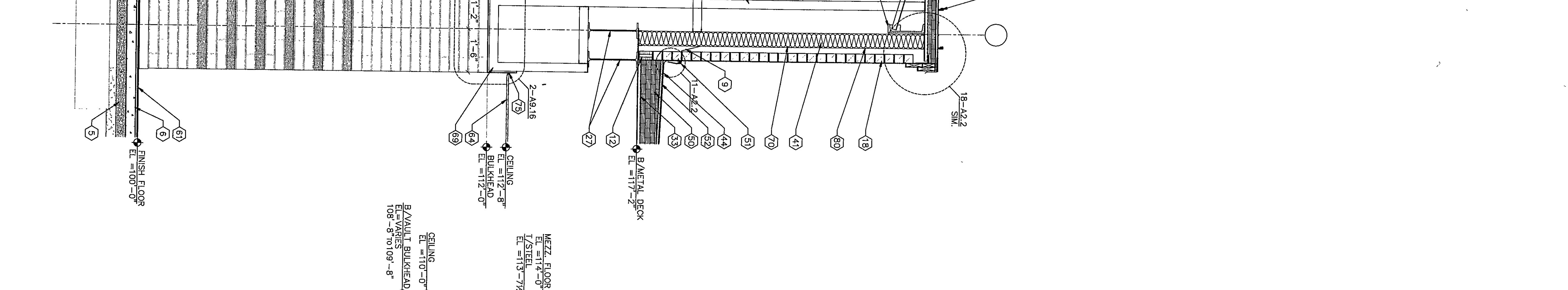
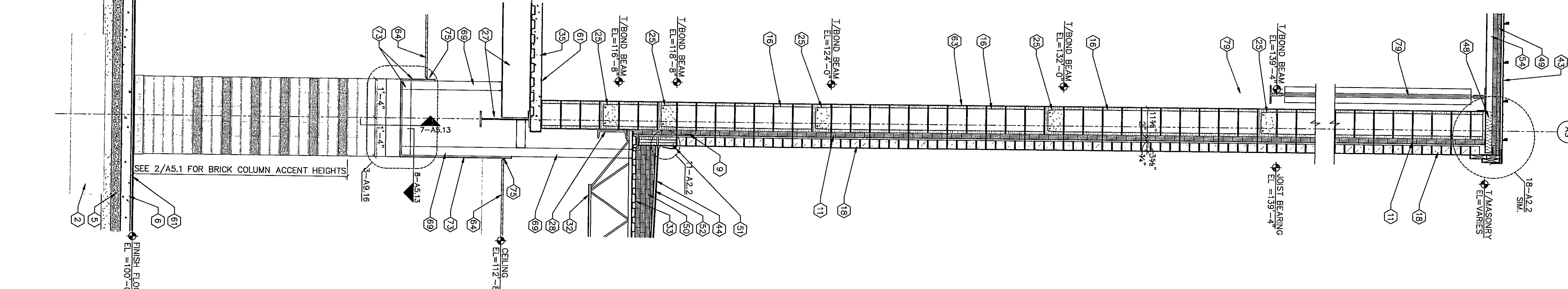
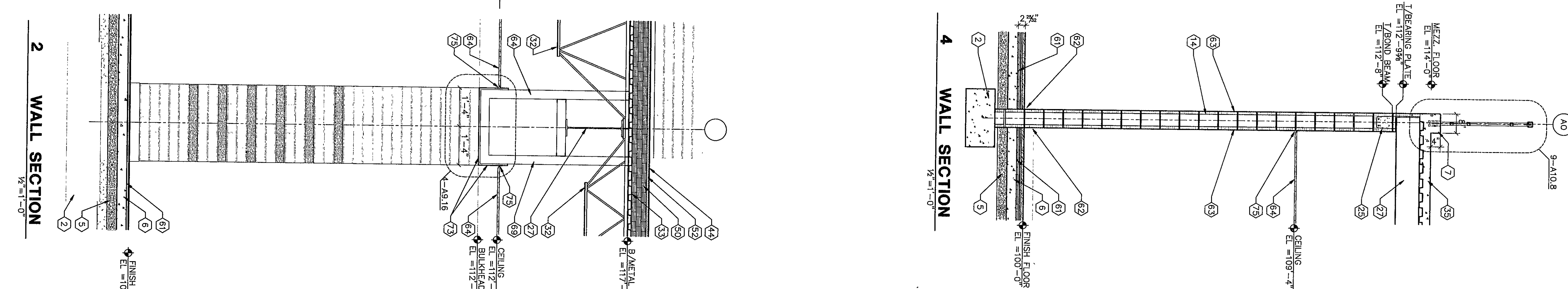
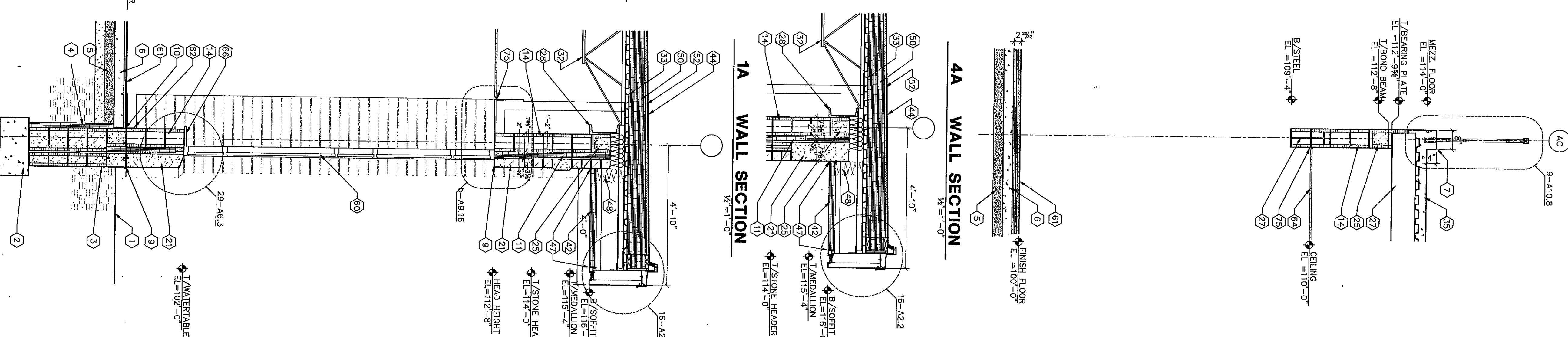


KEYNOTES

1. FINISH GRADE - REFER TO SITE DRAWINGS.
2. FOUNDATION FOOTING - REFER TO STRUCTURAL DRAWINGS.
3. FOUNDATION WALL - REFER TO STRUCTURAL DRAWINGS.
4. INSULATION - REFER TO STRUCTURAL DRAWINGS.
5. 4" BRANCHED FILL OVER WARP BARRIER OVER 4" BRANCHED FILL.
6. CONCRETE SLAB - REFER TO STRUCTURAL DRAWINGS.
7. 8" DIA. X 8' ANCHOR BOLT WITH HOOK AT 32" O.C. BY SECTION 04150.
8. 1/2" WALL FLASHING WITH WEAP HOLES REFER TO SECTION 04150 AND 04200.
9. 1/2" EXPANSION JOINT MATERIAL - REFER TO SECTION 04200.
10. 2" CAVITY INSULATION - REFER TO SECTION 04200.
11. 4" CONCRETE MASONRY UNIT - REFER TO SECTION 04200.
12. 8" CONCRETE MASONRY UNIT - REFER TO SECTION 04200.
13. 12" CONCRETE MASONRY UNIT - REFER TO SECTION 04200.
14. 16" CONCRETE MASONRY UNIT - REFER TO SECTION 04200.
15. 20" CONCRETE MASONRY UNIT - REFER TO SECTION 04200.
16. 24" CONCRETE MASONRY UNIT - REFER TO SECTION 04200.
17. 28" CONCRETE MASONRY UNIT - REFER TO SECTION 04200.
18. FACE BRICK COLOR 1/2" - REFER TO SECTION 04200.
19. FACE BRICK BALANCE 1/2" - REFER TO SECTION 04200.
20. CAST STONE - REFER TO SECTION 04720.
21. CAST STONE CORNER - REFER TO SECTION 04720.
22. CAST STONE CORNER - REFER TO SECTION 04720.
23. CAST STONE CORNER - REFER TO SECTION 04720.
24. CAST STONE CORNER - REFER TO SECTION 04720.
25. CAST STONE CORNER - REFER TO SECTION 04720.
26. CAST STONE CORNER - REFER TO SECTION 04720.
27. CAST STONE CORNER - REFER TO SECTION 04720.
28. CAST STONE CORNER - REFER TO SECTION 04720.
29. CAST STONE CORNER - REFER TO SECTION 04720.
30. CAST STONE CORNER - REFER TO SECTION 04720.
31. CAST STONE CORNER - REFER TO SECTION 04720.
32. CAST STONE CORNER - REFER TO SECTION 04720.
33. CAST STONE CORNER - REFER TO SECTION 04720.
34. CAST STONE CORNER - REFER TO SECTION 04720.
35. CAST STONE CORNER - REFER TO SECTION 04720.
36. CAST STONE CORNER - REFER TO SECTION 04720.
37. CAST STONE CORNER - REFER TO SECTION 04720.
38. CAST STONE CORNER - REFER TO SECTION 04720.
39. CAST STONE CORNER - REFER TO SECTION 04720.
40. CAST STONE CORNER - REFER TO SECTION 04720.
41. CAST STONE CORNER - REFER TO SECTION 04720.
42. CAST STONE CORNER - REFER TO SECTION 04720.
43. CAST STONE CORNER - REFER TO SECTION 04720.
44. CAST STONE CORNER - REFER TO SECTION 04720.
45. CAST STONE CORNER - REFER TO SECTION 04720.
46. CAST STONE CORNER - REFER TO SECTION 04720.
47. CAST STONE CORNER - REFER TO SECTION 04720.
48. CAST STONE CORNER - REFER TO SECTION 04720.
49. CAST STONE CORNER - REFER TO SECTION 04720.
50. CAST STONE CORNER - REFER TO SECTION 04720.
51. CAST STONE CORNER - REFER TO SECTION 04720.
52. CAST STONE CORNER - REFER TO SECTION 04720.
53. CAST STONE CORNER - REFER TO SECTION 04720.
54. CAST STONE CORNER - REFER TO SECTION 04720.
55. CAST STONE CORNER - REFER TO SECTION 04720.
56. CAST STONE CORNER - REFER TO SECTION 04720.
57. CAST STONE CORNER - REFER TO SECTION 04720.
58. CAST STONE CORNER - REFER TO SECTION 04720.
59. CAST STONE CORNER - REFER TO SECTION 04720.
60. CAST STONE CORNER - REFER TO SECTION 04720.
61. CAST STONE CORNER - REFER TO SECTION 04720.
62. CAST STONE CORNER - REFER TO SECTION 04720.
63. CAST STONE CORNER - REFER TO SECTION 04720.
64. CAST STONE CORNER - REFER TO SECTION 04720.
65. CAST STONE CORNER - REFER TO SECTION 04720.
66. CAST STONE CORNER - REFER TO SECTION 04720.
67. CAST STONE CORNER - REFER TO SECTION 04720.
68. CAST STONE CORNER - REFER TO SECTION 04720.
69. CAST STONE CORNER - REFER TO SECTION 04720.
70. CAST STONE CORNER - REFER TO SECTION 04720.
71. CAST STONE CORNER - REFER TO SECTION 04720.
72. CAST STONE CORNER - REFER TO SECTION 04720.
73. CAST STONE CORNER - REFER TO SECTION 04720.
74. CAST STONE CORNER - REFER TO SECTION 04720.
75. CAST STONE CORNER - REFER TO SECTION 04720.
76. CAST STONE CORNER - REFER TO SECTION 04720.
77. CAST STONE CORNER - REFER TO SECTION 04720.
78. CAST STONE CORNER - REFER TO SECTION 04720.
79. CAST STONE CORNER - REFER TO SECTION 04720.
80. CAST STONE CORNER - REFER TO SECTION 04720.
81. CAST STONE CORNER - REFER TO SECTION 04720.
82. CAST STONE CORNER - REFER TO SECTION 04720.



THE NEW
CHESTERTON HIGH SCHOOL
FOR THE
DUNELAND SCHOOL CORPORATION
CHESTERTON, INDIANA

COPYRIGHT 1997 BY FANNING/HOWEY ASSOCIATES, INC.

Fanning/Howey
Associates, Inc.
Architects Engineers Consultants

WALL SECTIONS

DRAWN BY: D.M.R. COMM. NO.: 95067.00
CHECKED BY: dmr DATE: APRIL 21, 1997

A5.21

REVISIONS NO. DATE