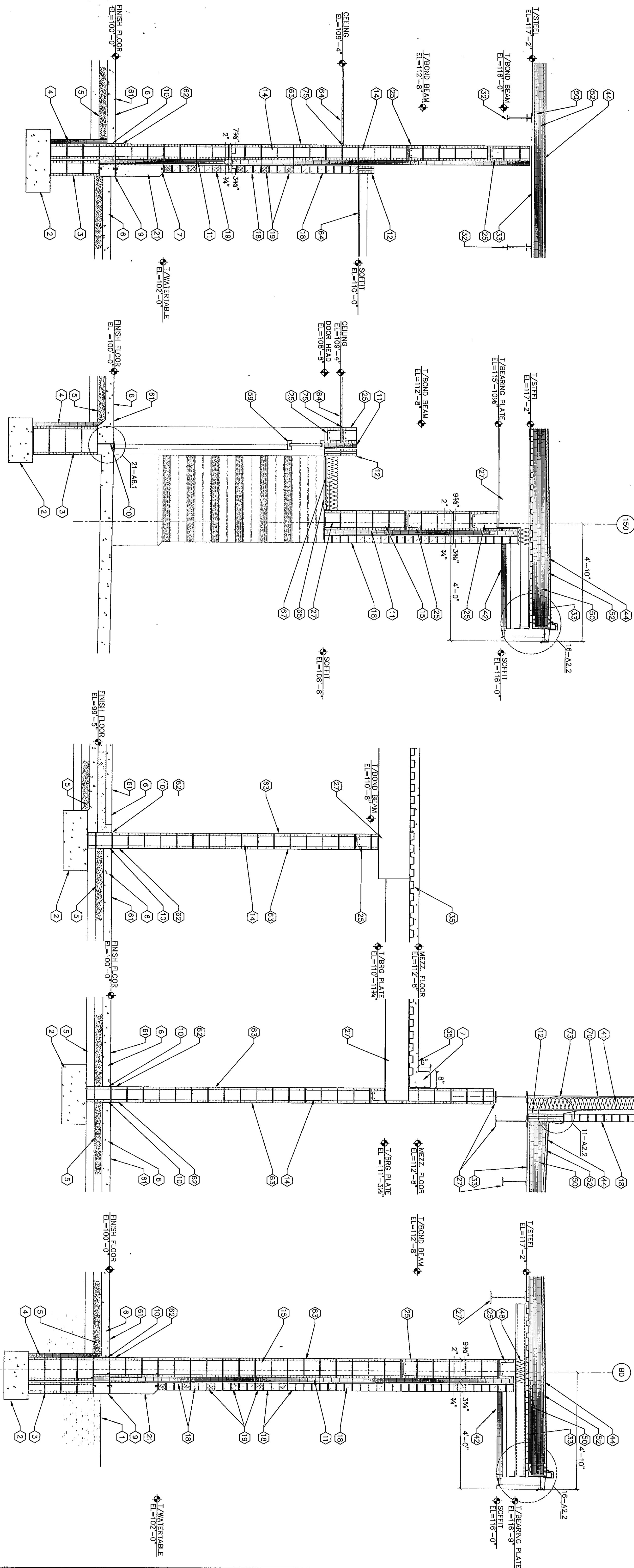


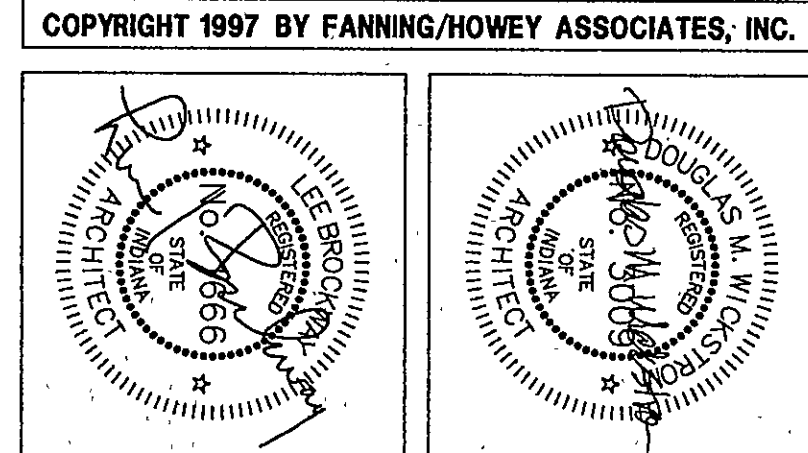
NOTE:
FOR ADDITIONAL MASONRY BOND BEAM
AND MASONRY LINTEL INFORMATION
SEE S3.1 TO S3.9 & S5.1 TO S5.9

KEYNOTES

1. FINISH GRADE - REFER TO SITE DRAWINGS.
2. FOUNDATION FOOTING - REFER TO STRUCTURAL DRAWINGS.
3. FOUNDATION WALL - REFER TO STRUCTURAL DRAWINGS.
4. EXTERIOR INSULATION - REFER TO SECTION 0250.
5. 4" DRAINAGE FILL OVER WATER BARRIER.
6. CONCRETE SLAB - REFER TO STRUCTURAL DRAWINGS.
7. CONCRETE CURB.
8. 3/4" DIA. X 8" ANCHOR BOLT WITH HOOK AT 12" O.C. BY SECTION 0410.
9. INSULATION FLASHING WITH KEPS HOLES AND DRAINAGE MATERIAL - REFER TO SECTION 0410 AND 0420.
10. 1/4" EXPANSION JOINT MATERIAL - REFER TO SECTION 0420.
11. 2" CANTY INSULATION - REFER TO SECTION 0420.
12. 4" CONCRETE MASONRY UNIT - REFER TO SECTION 0420.
13. 8" CONCRETE MASONRY UNIT - REFER TO SECTION 0420.
14. 8" CONCRETE MASONRY UNIT - REFER TO SECTION 0420.
15. 12" CONCRETE MASONRY UNIT - REFER TO SECTION 0420.
16. 12" CONCRETE MASONRY UNIT - REFER TO SECTION 0420.
17. FACE BRICK - COLOR "X" - REFER TO SECTION 0420.
18. FACE BRICK - COLOR "Y" - REFER TO SECTION 0420.
19. FACE BRICK BALANCE - REFER TO SECTION 0420.
20. CAST STONE - REFER TO SECTION 0420.
21. CAST STONE COPING - REFER TO SECTION 0420.
22. FILL OUT CORE WITH GROUT.
23. OLD BALANCE - REFER TO SECTION 0420.
24. OLD BALANCE BEAM - REFER TO SECTION 0420.
25. STEEL COLUMN - REFER TO STRUCTURAL DRAWINGS.
26. STEEL BEAM - REFER TO STRUCTURAL DRAWINGS.
27. STEEL ANGLE - REFER TO STRUCTURAL DRAWINGS.
28. STEEL ANGLE - REFER TO STRUCTURAL DRAWINGS.
29. STEEL LINTEL - REFER TO STRUCTURAL DRAWINGS.
30. STEEL TUBE - REFER TO STRUCTURAL DRAWINGS.
31. STEEL JOIST - REFER TO STRUCTURAL DRAWINGS.
32. 1/4" METAL DECK - REFER TO STRUCTURAL DRAWINGS.
33. 2" METAL DECK - REFER TO STRUCTURAL DRAWINGS.
34. CONCRETE SLAB OVER METAL DECK - REFER TO STRUCTURAL DRAWINGS.
35. STAR LANDING - REFER TO DETAIL 1-A101.
36. STEEL ORDER - REFER TO STRUCTURAL DRAWINGS.
37. 1/4" O.D. STEEL PIPE GUARD RAIL AT TOP OF 4'-0" O.C. (MAX.) INS. STAIRS.
38. 1/4" O.D. STEEL PIPE GUARD RAIL AT TOP OF 4'-0" O.C. (MAX.) INS. STAIRS.
39. TREATED WOOD BLOCKING - SEE AS INDICATED.
40. 1/4" TREATED PLANKWOOD SEATING.
41. 1/4" TREATED PLANKWOOD SEATING.
42. EXTERIOR INSULATION FINISH SYSTEM - REFER TO SECTION 0720.
43. PREPARED METAL ROOFING - REFER TO SECTION 0742.
44. ADHERED FLEXIBLE SHEET ROOFING - REFER TO SECTION 0742.
45. METAL CORNER - REFER TO SECTION 0740.
46. METAL FLASHING AND GABLE STOP - REFER TO SECTION 0740.
47. SEALANT WITH BACKER ROD - REFER TO SECTION 0740.
48. PACK WITH BUTT INSULATION.
49. 2 LAYERS OF 1/4" PARALLEL ROOF INSULATION.
50. 2 LAYERS OF 1/4" PARALLEL ROOF INSULATION.
51. SURFACE MOUNTED ROOFLET & COUNTERFLASHING.
52. 1" SECONDARY BOARD.
53. EXPANSION JOINT MATERIAL WITH SPRING TUBING.
54. PROVIDE FLEXIBLE SHEET ROOFING DETAIL.
55. PROVIDE FLEXIBLE SHEET ROOFING DETAIL.
56. PROVIDE FLEXIBLE SHEET ROOFING DETAIL.
57. INSULATE WITH DOOR & FRAME - REFER TO SECTION 0810.
58. ALUMINUM FRAME - REFER TO SECTION 0810.
59. ALUMINUM WINDOW - REFER TO SECTION 0810.
60. FINISH FLOOR - REFER TO FINISH SCHEDULE.
61. FINISH BASE - REFER TO FINISH SCHEDULE.
62. WALL FINISH - REFER TO FINISH SCHEDULE.
63. FINISH CEILING - REFER TO FINISH SCHEDULE.
64. EXISTING PLASTER OVER METAL LATH.
65. 1/2" TYPE "X" GYPSUM WALLBOARD.
66. MARBLE WINDOW SILL - REFER TO SECTION 0830.
67. FINISHING AND CASING CHANNELS - REFER TO SECTION 0820.
68. DEEP GROOVE.
69. 3/4" METAL STUD FINISH AT 16" O.C.
70. 8" METAL STUD FINISH AT 16" O.C.
71. 8" METAL STUD FINISH AT 16" O.C.
72. 1/2" TYPE "X" GYPSUM WALLBOARD.
73. 3/4" BUTT INSULATION.
74. SHADOW MOULD - REFER TO DETAIL 5-A11.
75. OPERABLE WALL - REFER TO SECTION 1080.
76. THREADED ROSS WASHERS, NUTS, AND FINISHED AND INSTALLED BY SECTION 1080.
77. LIGHT FINISH - REFER TO ELECTRICAL DRAWINGS.
78. STEEL TRUSS - REFER TO ELECTRICAL DRAWINGS.
79. ALTERNATE SLOPED CEILING PROJECTION SURFACE AND SECTION 0100 TO DETAIL 5-A11.
80. RECALL BRICK WALL TRUSS - REFER TO DETAIL 4-A11 AND SECTION 0920.
81. 1/4" O.P.S.M. SHEATHING.
- 82.



THE NEW
CHESTERTON HIGH SCHOOL
FOR THE
DUNELAND SCHOOL CORPORATION
CHESTERTON, INDIANA



Fanning/Howey Associates, Inc.
Architects Engineers Consultants

WALL SECTIONS	
DRAWN BY: DMR	COMM. NO.: 95067.00
CHECKED BY: LEC	DATE: APRIL 21, 1997
REVISIONS NO. DATE	
A5.16	

CHESTERTON HIGH SCHOOL
95067.00