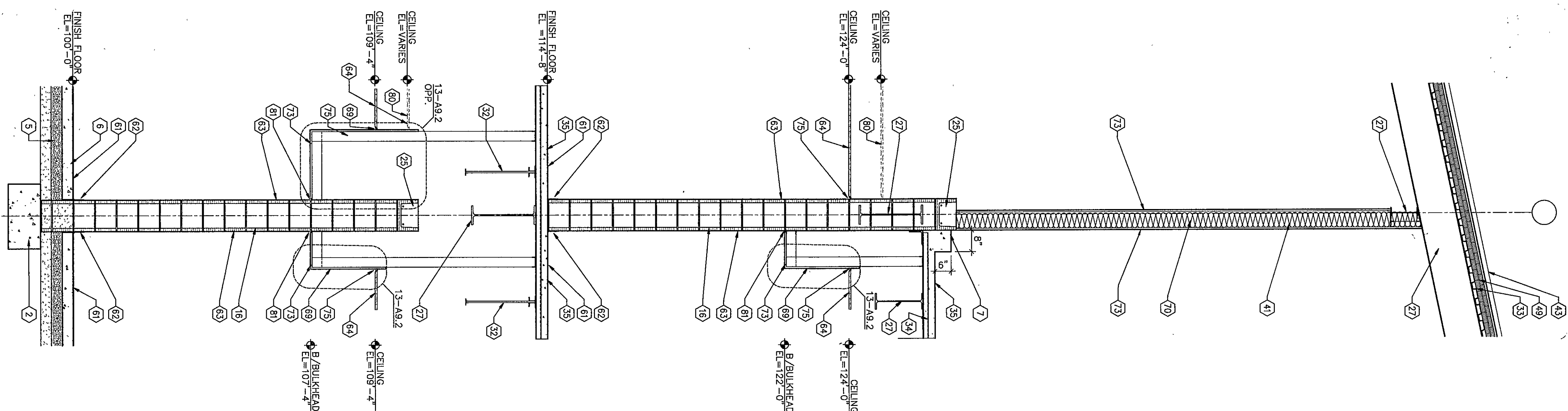
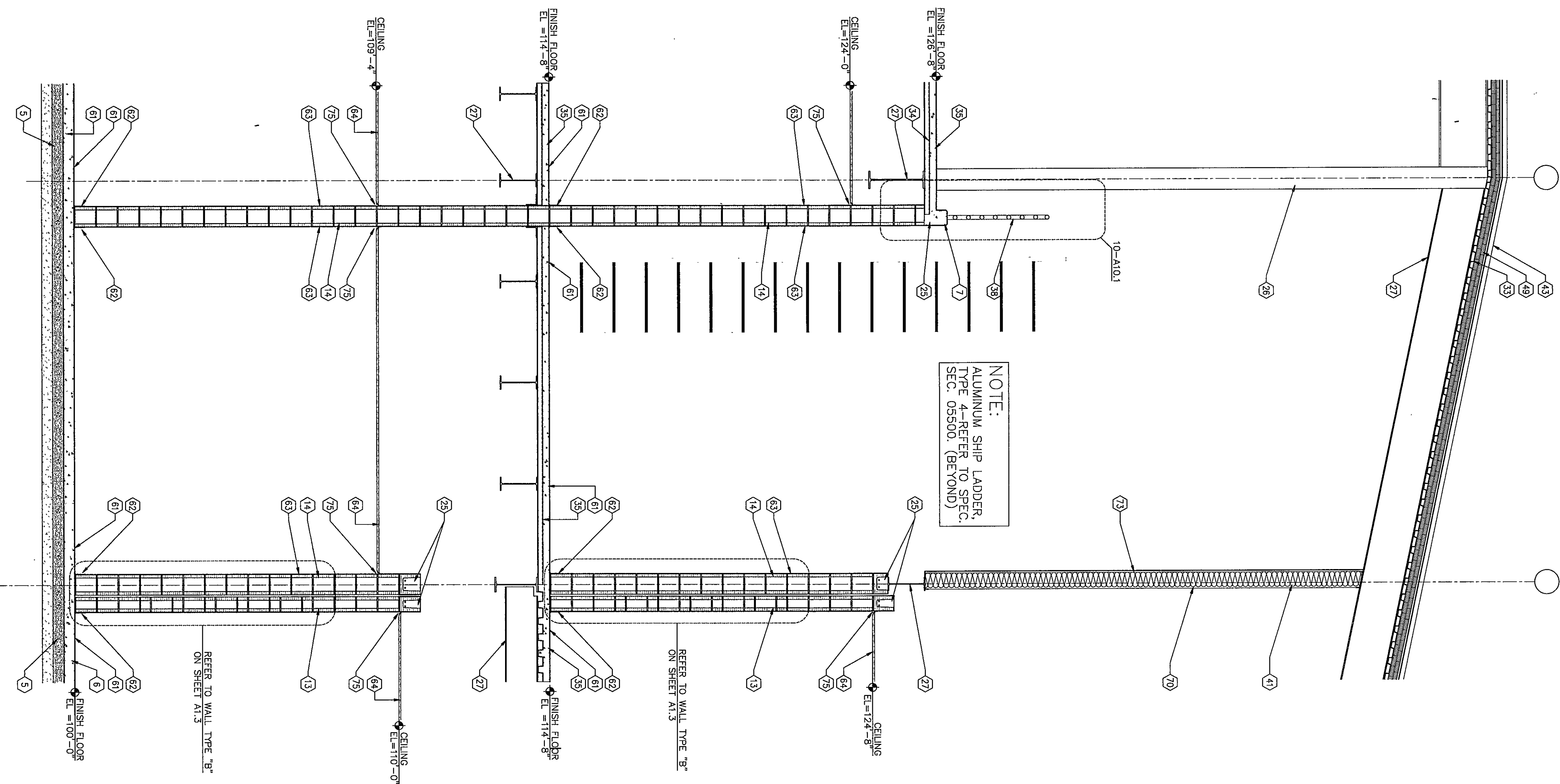


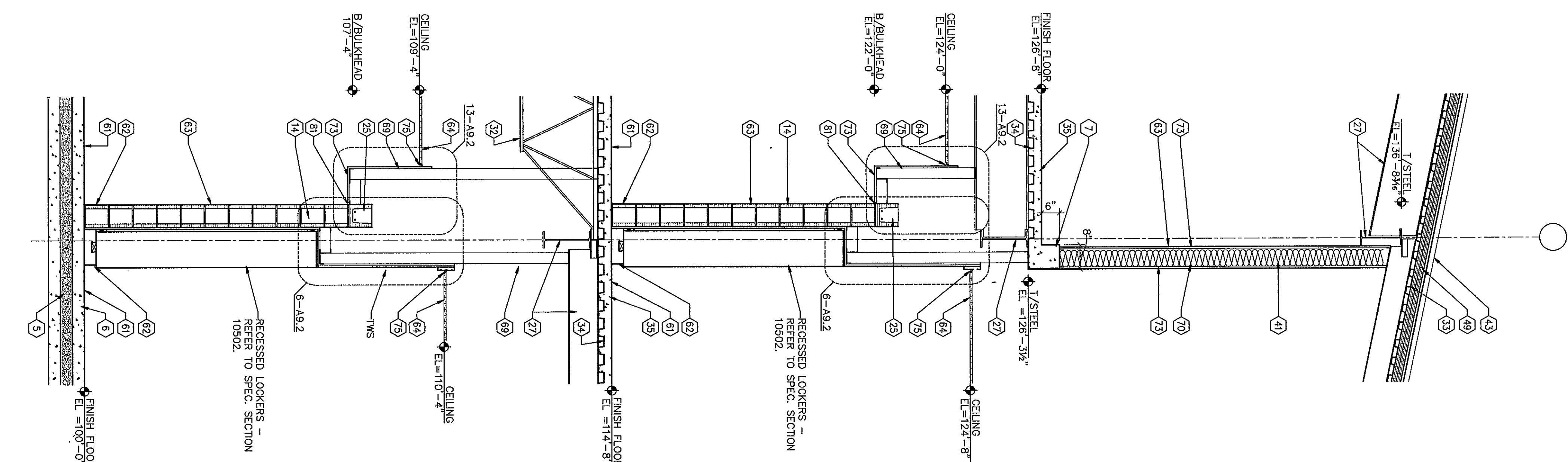
NOTE:
FOR ADDITIONAL MASONRY BOND BEAM
AND MASONRY LINTEL INFORMATION
SEE S3.1 to S3.9 & S5.1 to S5.9



3 WALL SECTION



2 WALL SECTION




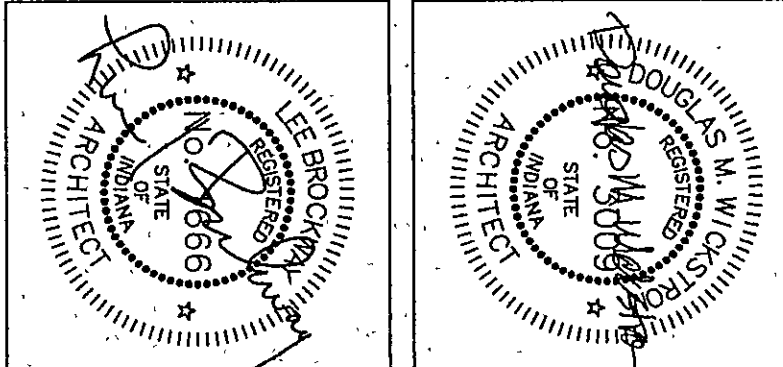
1 WALL SECTION

- | | |
|-----|---|
| 1 | FINISH GRADE - REFER TO SITE DRAWINGS. |
| 2 | FOUNDATION - REFER TO STRUCTURAL DRAWINGS. |
| 3 | FOUNDATION WALL - REFER TO STRUCTURAL DRAWINGS. |
| 4 | 1" DRAINAGE FLAT OVER WARMER BARREN OVER 1" DRAINAGE FLAT. |
| 5 | CONCRETE SLAB - REFER TO STRUCTURAL DRAWINGS. |
| 6 | CONCRETE CURB - REFER TO STRUCTURAL DRAWINGS. |
| 7 | 1" PA. X 6" ANCHOR BOLT WITH HOOK AT 32" O.C. BY SECTION 04100. |
| 8 | WALL WITH FINISHING WITH WEEP HOLES REFER TO SECTION 04100 AND 04200. |
| 9 | W/ DENVER JUMP MATERIAL - REFER TO SECTION 04200. |
| 10 | 2" GUTTY INSULATION - REFER TO SECTION 04200. |
| 11 | 1" CONCRETE MASONRY UNIT - REFER TO SECTION 04200. |
| 12 | 4" CONCRETE MASONRY UNIT - REFER TO SECTION 04200. |
| 13 | 8" CONCRETE MASONRY UNIT - REFER TO SECTION 04200. |
| 14 | 12" CONCRETE MASONRY UNIT - REFER TO SECTION 04200. |
| 15 | 1" CONCRETE MASONRY UNIT - REFER TO SECTION 04200. |
| 16 | 1" CONCRETE MASONRY UNIT - REFER TO SECTION 04200. |
| 17 | FACE BRICK, COLOR "A" - REFER TO SECTION 04200. |
| 18 | FACE BRICK, COLOR "B" - REFER TO SECTION 04200. |
| 19 | FACE BRICK, COLOR "C" - REFER TO SECTION 04200. |
| 20 | FACE BRICK, COLOR "D" - REFER TO SECTION 04200. |
| 21 | CAST STONE CORNER - REFER TO SECTION 04200. |
| 22 | CAST STONE CORNER - REFER TO SECTION 04200. |
| 23 | FLAT OIL CORE WITH GROUT. |
| 24 | FLAT OIL BALANCE - REFER TO SECTION 04200. |
| 25 | FLAT OIL BALANCE - REFER TO SECTION 04200. |
| 26 | FLAT OIL BALANCE - REFER TO SECTION 04200. |
| 27 | FLAT OIL BALANCE - REFER TO SECTION 04200. |
| 28 | FLAT OIL BALANCE - REFER TO SECTION 04200. |
| 29 | FLAT OIL BALANCE - REFER TO SECTION 04200. |
| 30 | FLAT OIL BALANCE - REFER TO SECTION 04200. |
| 31 | FLAT OIL BALANCE - REFER TO SECTION 04200. |
| 32 | FLAT OIL BALANCE - REFER TO SECTION 04200. |
| 33 | FLAT OIL BALANCE - REFER TO SECTION 04200. |
| 34 | FLAT OIL BALANCE - REFER TO SECTION 04200. |
| 35 | FLAT OIL BALANCE - REFER TO SECTION 04200. |
| 36 | FLAT OIL BALANCE - REFER TO SECTION 04200. |
| 37 | FLAT OIL BALANCE - REFER TO SECTION 04200. |
| 38 | FLAT OIL BALANCE - REFER TO SECTION 04200. |
| 39 | FLAT OIL BALANCE - REFER TO SECTION 04200. |
| 40 | FLAT OIL BALANCE - REFER TO SECTION 04200. |
| 41 | FLAT OIL BALANCE - REFER TO SECTION 04200. |
| 42 | FLAT OIL BALANCE - REFER TO SECTION 04200. |
| 43 | FLAT OIL BALANCE - REFER TO SECTION 04200. |
| 44 | FLAT OIL BALANCE - REFER TO SECTION 04200. |
| 45 | FLAT OIL BALANCE - REFER TO SECTION 04200. |
| 46 | FLAT OIL BALANCE - REFER TO SECTION 04200. |
| 47 | FLAT OIL BALANCE - REFER TO SECTION 04200. |
| 48 | FLAT OIL BALANCE - REFER TO SECTION 04200. |
| 49 | FLAT OIL BALANCE - REFER TO SECTION 04200. |
| 50 | FLAT OIL BALANCE - REFER TO SECTION 04200. |
| 51 | FLAT OIL BALANCE - REFER TO SECTION 04200. |
| 52 | FLAT OIL BALANCE - REFER TO SECTION 04200. |
| 53 | FLAT OIL BALANCE - REFER TO SECTION 04200. |
| 54 | FLAT OIL BALANCE - REFER TO SECTION 04200. |
| 55 | FLAT OIL BALANCE - REFER TO SECTION 04200. |
| 56 | FLAT OIL BALANCE - REFER TO SECTION 04200. |
| 57 | FLAT OIL BALANCE - REFER TO SECTION 04200. |
| 58 | FLAT OIL BALANCE - REFER TO SECTION 04200. |
| 59 | FLAT OIL BALANCE - REFER TO SECTION 04200. |
| 60 | FLAT OIL BALANCE - REFER TO SECTION 04200. |
| 61 | FLAT OIL BALANCE - REFER TO SECTION 04200. |
| 62 | FLAT OIL BALANCE - REFER TO SECTION 04200. |
| 63 | FLAT OIL BALANCE - REFER TO SECTION 04200. |
| 64 | FLAT OIL BALANCE - REFER TO SECTION 04200. |
| 65 | FLAT OIL BALANCE - REFER TO SECTION 04200. |
| 66 | FLAT OIL BALANCE - REFER TO SECTION 04200. |
| 67 | FLAT OIL BALANCE - REFER TO SECTION 04200. |
| 68 | FLAT OIL BALANCE - REFER TO SECTION 04200. |
| 69 | FLAT OIL BALANCE - REFER TO SECTION 04200. |
| 70 | FLAT OIL BALANCE - REFER TO SECTION 04200. |
| 71 | FLAT OIL BALANCE - REFER TO SECTION 04200. |
| 72 | FLAT OIL BALANCE - REFER TO SECTION 04200. |
| 73 | FLAT OIL BALANCE - REFER TO SECTION 04200. |
| 74 | FLAT OIL BALANCE - REFER TO SECTION 04200. |
| 75 | FLAT OIL BALANCE - REFER TO SECTION 04200. |
| 76 | FLAT OIL BALANCE - REFER TO SECTION 04200. |
| 77 | FLAT OIL BALANCE - REFER TO SECTION 04200. |
| 78 | FLAT OIL BALANCE - REFER TO SECTION 04200. |
| 79 | FLAT OIL BALANCE - REFER TO SECTION 04200. |
| 80 | FLAT OIL BALANCE - REFER TO SECTION 04200. |
| 81 | FLAT OIL BALANCE - REFER TO SECTION 04200. |
| 82 | FLAT OIL BALANCE - REFER TO SECTION 04200. |
| 83 | FLAT OIL BALANCE - REFER TO SECTION 04200. |
| 84 | FLAT OIL BALANCE - REFER TO SECTION 04200. |
| 85 | FLAT OIL BALANCE - REFER TO SECTION 04200. |
| 86 | FLAT OIL BALANCE - REFER TO SECTION 04200. |
| 87 | FLAT OIL BALANCE - REFER TO SECTION 04200. |
| 88 | FLAT OIL BALANCE - REFER TO SECTION 04200. |
| 89 | FLAT OIL BALANCE - REFER TO SECTION 04200. |
| 90 | FLAT OIL BALANCE - REFER TO SECTION 04200. |
| 91 | FLAT OIL BALANCE - REFER TO SECTION 04200. |
| 92 | FLAT OIL BALANCE - REFER TO SECTION 04200. |
| 93 | FLAT OIL BALANCE - REFER TO SECTION 04200. |
| 94 | FLAT OIL BALANCE - REFER TO SECTION 04200. |
| 95 | FLAT OIL BALANCE - REFER TO SECTION 04200. |
| 96 | FLAT OIL BALANCE - REFER TO SECTION 04200. |
| 97 | FLAT OIL BALANCE - REFER TO SECTION 04200. |
| 98 | FLAT OIL BALANCE - REFER TO SECTION 04200. |
| 99 | FLAT OIL BALANCE - REFER TO SECTION 04200. |
| 100 | FLAT OIL BALANCE - REFER TO SECTION 04200. |

KEYNOTES

THE NEW
CHESTERTON HIGH SCHOOL
FOR THE
DUNELAND SCHOOL CORPORATION
CHESTERTON, INDIANA

COPYRIGHT 1997 BY FANNING/HOWEY ASSOCIATES, INC.



Fanning/Howey
Associates, Inc.
Architects Engineers Consultants

WALL SECTIONS	
DRAWN BY: D.M.R.	COMM. NO.: 95067.00
CHECKED BY: LEC	DATE: APRIL 21, 1997
A5.9	REVISIONS NO.