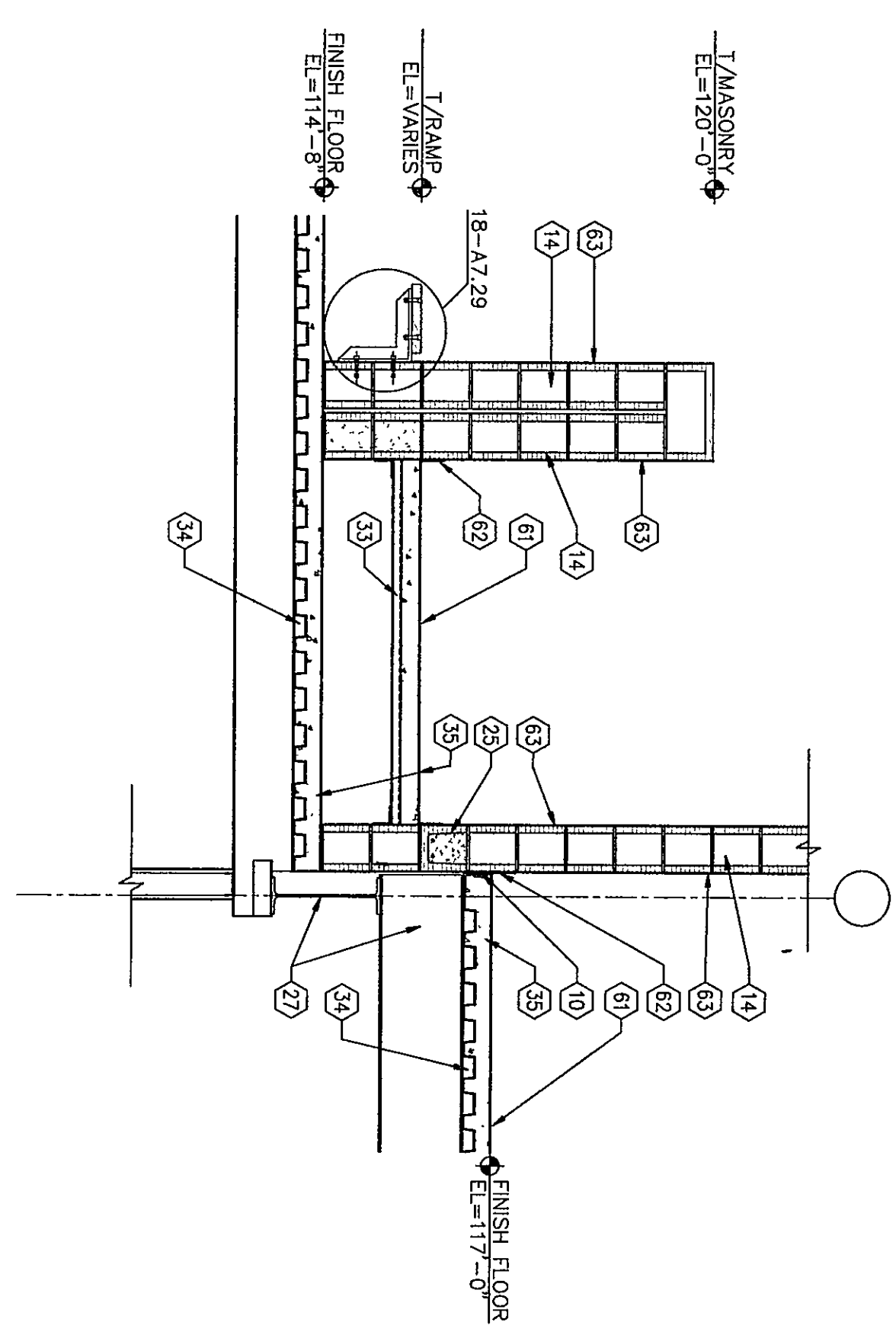
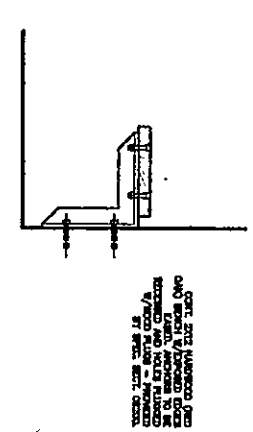


NOTE:  
1. ADDITIONAL MASONRY BOND BEAM  
AND MASONRY LIMIT INFORMATION  
SEE S3.1 to S3.9 & S3.1 to S3.9

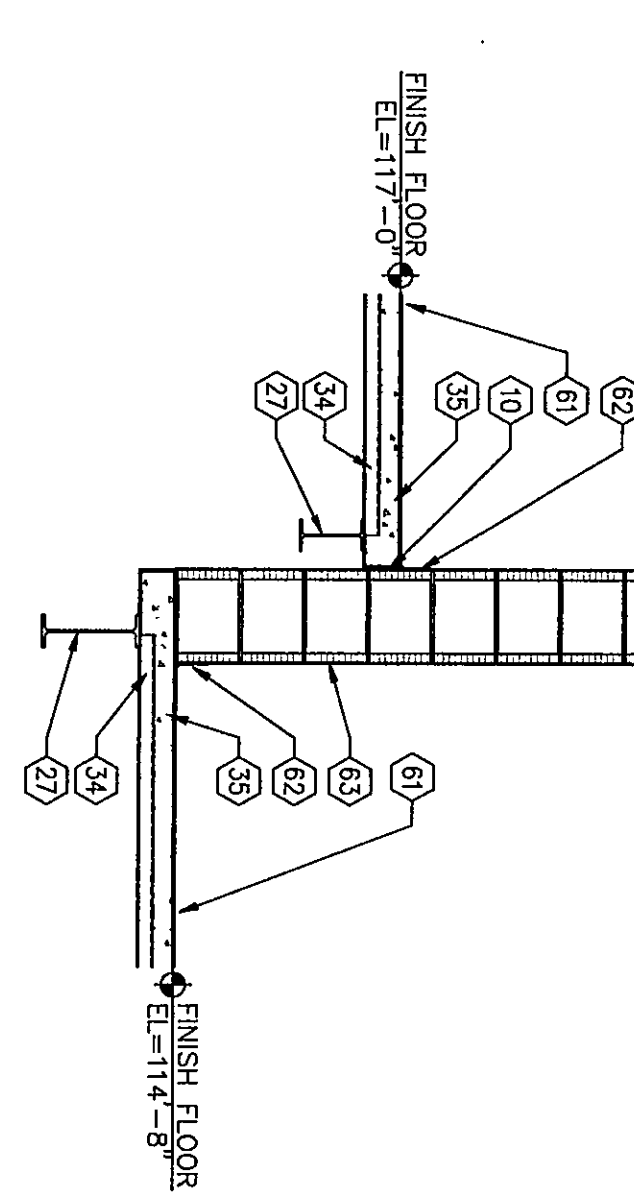
## KEYNOTES

1. FINISH GRADE - REFER TO SITE DRAWINGS.
2. CONCRETE FOOTING - REFER TO STRUCTURAL DRAWINGS.
3. FOUNDATION WALL - REFER TO STRUCTURAL DRAWINGS.
4. 2" PERIMETER INSULATION - REFER TO SECTION 04200.
5. 4" GRANULAR FILL OVER WEAP BARRIER OVER 4" BRANKE FILL.
6. CONCRETE SLAB - REFER TO STRUCTURAL DRAWINGS.
7. CONCRETE CURB.
8. 4" DIA. x 8" ANCHOR BOLTS WITH HOOK AT 32" O.C. BY SECTION 04200.
9. TIE-IN WALL FLASHING WITH WEAP HOLES REFER TO SECTION 04200 AND 04200.
10. 1/2" EXPANSION JOINT MATERIAL - REFER TO SECTION 04200.
11. 1/2" CONCRETE MASONRY UNIT - REFER TO SECTION 04200.
12. 4" CONCRETE MASONRY UNIT - REFER TO SECTION 04200.
13. 1/2" CONCRETE MASONRY UNIT - REFER TO SECTION 04200.
14. 8" CONCRETE MASONRY UNIT - REFER TO SECTION 04200.
15. 12" CONCRETE MASONRY UNIT - REFER TO SECTION 04200.
16. 1/2" CONCRETE MASONRY UNIT - REFER TO SECTION 04200.
17. 1/2" CONCRETE MASONRY UNIT - REFER TO SECTION 04200.
18. FACE BRICK - COLOR "X" - REFER TO SECTION 04200.
19. FACE BRICK - COLOR "Y" - REFER TO SECTION 04200.
20. CAST STONE - REFER TO SECTION 04200.
21. CAST STONE - REFER TO SECTION 04200.
22. CAST STONE - REFER TO SECTION 04200.
23. FILL OUT CORE WITH BROUT.
24. OLD BULLDOZE - REFER TO SECTION 04200.
25. OLD BOND BEAM - REFER TO STRUCTURAL DRAWINGS.
26. STEEL BEAM - REFER TO STRUCTURAL DRAWINGS.
27. STEEL BEAM - REFER TO STRUCTURAL DRAWINGS.
28. STEEL BEAM - REFER TO STRUCTURAL DRAWINGS.
29. STEEL ANGLE - REFER TO STRUCTURAL DRAWINGS.
30. STEEL TUBE - REFER TO STRUCTURAL DRAWINGS.
31. STEEL TUBE - REFER TO STRUCTURAL DRAWINGS.
32. STEEL TUBE - REFER TO STRUCTURAL DRAWINGS.
33. 1/4" METAL DECK - REFER TO STRUCTURAL DRAWINGS.
34. 1/2" METAL DECK - REFER TO STRUCTURAL DRAWINGS.
35. CONCRETE SLAB OVER METAL DECK - REFER TO STRUCTURAL DRAWINGS.
36. STAIR LANDING - REFER TO DETAIL 1-A101.
37. STEEL GIRDER - REFER TO DETAIL 1-A101.
38. 1/4" O.D. STEEL PIPE GLUED RAIL AT TOP AND VERTICAL SUPPORTS PROVIDE VERTICALS AT 5'-0" O.C. (MAX) AND SET IN SLEEVES.
39. TREATED WOOD FLOORING, SIZE AS INDICATED.
40. 1/4" TREATED PLYWOOD SHEATHING.
41. 1/4" TREATED PLYWOOD SHEATHING.
42. 1/4" TREATED PLYWOOD SHEATHING.
43. PREPARED METAL ROOFING - REFER TO SECTION 07412.
44. ADHERED FLEXIBLE SHEET ROOFING - REFER TO SECTION 07412.
45. METAL ROOFING - REFER TO SECTION 07412.
46. METAL FASCIA AND GABLE STOP - REFER TO SECTION 07412.
47. SEALANT WITH BACKER ROD - REFER TO SECTION 07412.
48. PACK WITH BATT INSULATION.
49. 2 LAYERS OF 1/4" PARALLEL ROOF INSULATION TAPERED ROOF INSULATION - 1/4" PER FOOT SLOPE (1" MIN. THICKNESS AT ROOF DRAIN).
50. SURFACE MOUNTED RAINFALL & COUNTERFLASHING.
51. 1" RECOVERY BOARD.
52. EXPANSION JOINT MATERIAL WITH GROUT TUBING PROVIDE FLEXIBLE SHEET ROOFING MANUFACTURERS STANDARD FLASHING DETAIL OVER PARAPET WALL.
53. GLAZING - REFER TO SECTION 08300.
54. HOLLOW METAL DOOR & FRAME - REFER TO SECTION 08300.
55. ALUMINUM WINDOW - REFER TO SECTION 08300.
56. FINISH FLOOR - REFER TO FINISH SCHEDULE.
57. FINISH BASE - REFER TO FINISH SCHEDULE.
58. FINISH CEILING - REFER TO FINISH SCHEDULE.
59. CEILING PLASTER OVER METAL LATH - REFER TO SECTION 09200.
60. BASELINE WINDOW SILL - REFER TO SECTION 09300.
61. TURNING AND CORNER CHANNELS - REFER TO SECTION 09300.
62. 2" METAL STUD FRAMING AT 16" O.C.
63. 6" METAL STUD FRAMING AT 16" O.C.
64. 8" METAL STUD FRAMING AT 16" O.C.
65. 1/4" TIE-REINFORCED GYPSUM WALLBOARD.
66. 1/4" TIE-REINFORCED GYPSUM WALLBOARD.
67. 1/4" TIE-REINFORCED GYPSUM WALLBOARD.
68. 1/4" TIE-REINFORCED GYPSUM WALLBOARD.
69. 1/4" TIE-REINFORCED GYPSUM WALLBOARD.
70. 1/4" TIE-REINFORCED GYPSUM WALLBOARD.
71. 1/4" TIE-REINFORCED GYPSUM WALLBOARD.
72. 1/4" TIE-REINFORCED GYPSUM WALLBOARD.
73. 1/4" TIE-REINFORCED GYPSUM WALLBOARD.
74. 1/4" TIE-REINFORCED GYPSUM WALLBOARD.
75. 1/4" TIE-REINFORCED GYPSUM WALLBOARD.
76. 1/4" TIE-REINFORCED GYPSUM WALLBOARD.
77. 1/4" TIE-REINFORCED GYPSUM WALLBOARD.
78. 1/4" TIE-REINFORCED GYPSUM WALLBOARD.
79. 1/4" TIE-REINFORCED GYPSUM WALLBOARD.
80. 1/4" TIE-REINFORCED GYPSUM WALLBOARD.
81. 1/4" TIE-REINFORCED GYPSUM WALLBOARD.
82. 1/4" TIE-REINFORCED GYPSUM WALLBOARD.



7 WALL SECTION  
1/2"=1'-0"

8 WALL SECTION  
1/2"=1'-0"



6 WALL SECTION  
1/2"=1'-0"

