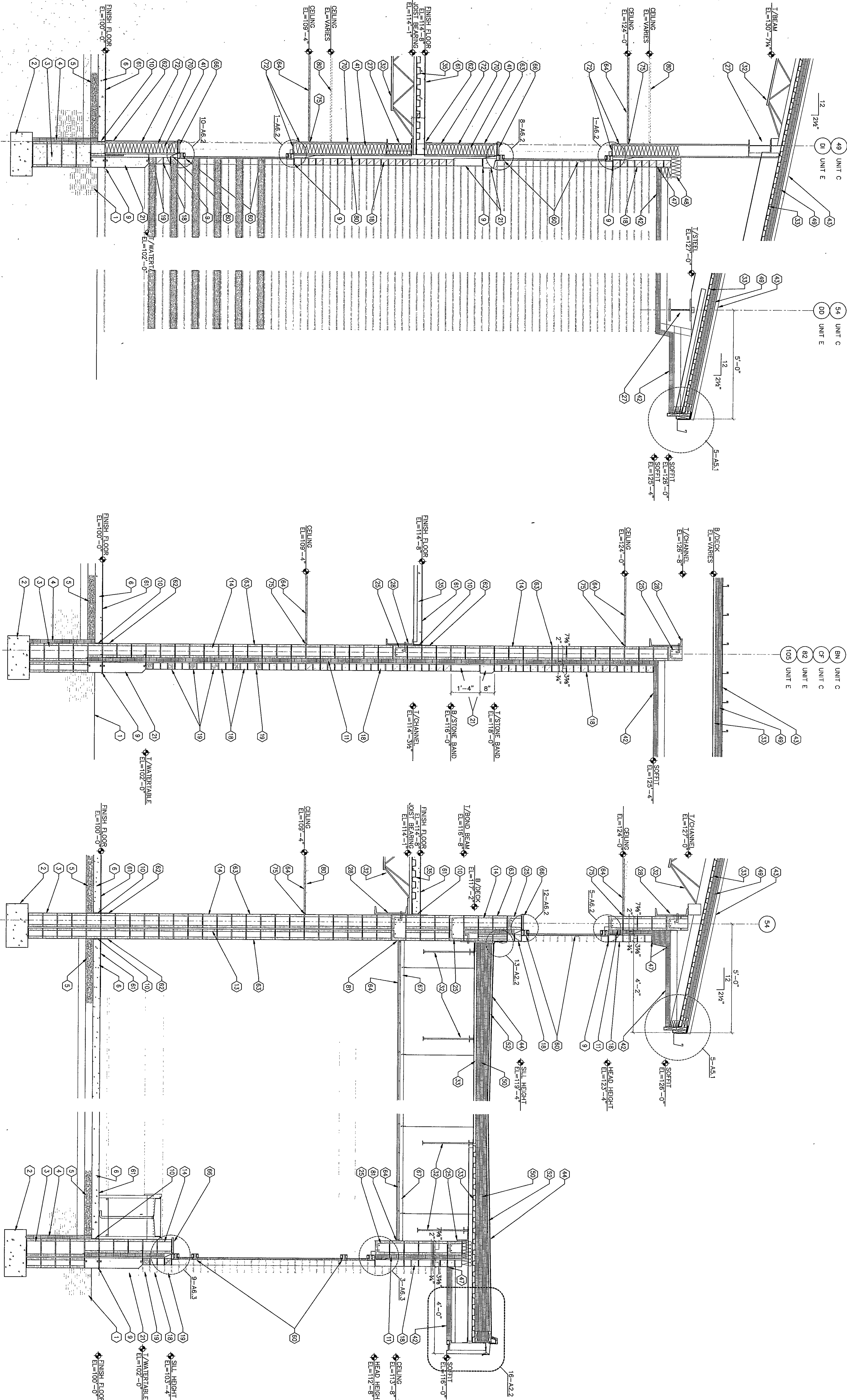


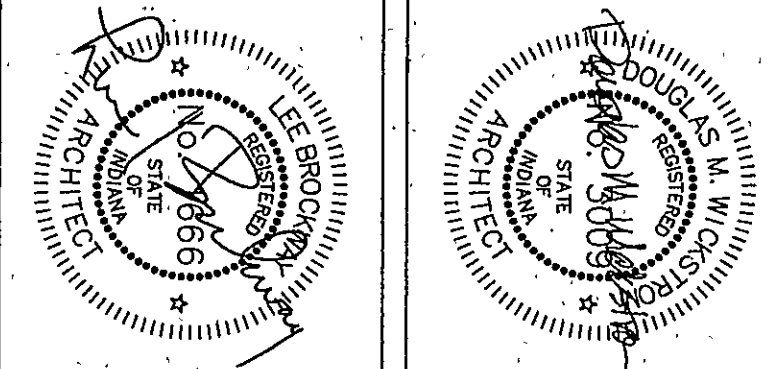
NOTE:  
FOR ADDITIONAL MASONRY BOND BEAM  
AND MASONRY UNITS INFORMATION  
SEE S3.1 to S3.9 & S5.1 to S5.9



# KEYNOTES

1. FINISH GRADE - REFER TO SITE DRAWINGS.
2. CONCRETE FOOTING - REFER TO STRUCTURAL DRAWINGS.
3. FOUNDATION WALL - REFER TO STRUCTURAL DRAWINGS.
4. FINISHES - REFER TO FINISH SCHEDULE.
5. 2" FIBER-REINFORCED EPS/STYROFOAM INSULATION - REFER TO SECTION 04200.
6. 4" DRAINAGE FILL OVER WEAP BAR - REFER TO SECTION 04200.
7. CONCRETE CURB - REFER TO STRUCTURAL DRAWINGS.
8. 3/4" DIA. X 8" ANCHOR BOLT WITH HOOK AT 18" O.C. - REFER TO SECTION 04200.
9. 3/4" DIA. X 8" ANCHOR BOLT WITH HOOK AT 18" O.C. - REFER TO SECTION 04200.
10. 3/4" DIA. X 8" ANCHOR BOLT WITH HOOK AT 18" O.C. - REFER TO SECTION 04200.
11. 3/4" DIA. X 8" ANCHOR BOLT WITH HOOK AT 18" O.C. - REFER TO SECTION 04200.
12. 3/4" DIA. X 8" ANCHOR BOLT WITH HOOK AT 18" O.C. - REFER TO SECTION 04200.
13. 3/4" DIA. X 8" ANCHOR BOLT WITH HOOK AT 18" O.C. - REFER TO SECTION 04200.
14. 3/4" DIA. X 8" ANCHOR BOLT WITH HOOK AT 18" O.C. - REFER TO SECTION 04200.
15. 3/4" DIA. X 8" ANCHOR BOLT WITH HOOK AT 18" O.C. - REFER TO SECTION 04200.
16. 3/4" DIA. X 8" ANCHOR BOLT WITH HOOK AT 18" O.C. - REFER TO SECTION 04200.
17. 3/4" DIA. X 8" ANCHOR BOLT WITH HOOK AT 18" O.C. - REFER TO SECTION 04200.
18. 3/4" DIA. X 8" ANCHOR BOLT WITH HOOK AT 18" O.C. - REFER TO SECTION 04200.
19. 3/4" DIA. X 8" ANCHOR BOLT WITH HOOK AT 18" O.C. - REFER TO SECTION 04200.
20. 3/4" DIA. X 8" ANCHOR BOLT WITH HOOK AT 18" O.C. - REFER TO SECTION 04200.
21. 3/4" DIA. X 8" ANCHOR BOLT WITH HOOK AT 18" O.C. - REFER TO SECTION 04200.
22. 3/4" DIA. X 8" ANCHOR BOLT WITH HOOK AT 18" O.C. - REFER TO SECTION 04200.
23. 3/4" DIA. X 8" ANCHOR BOLT WITH HOOK AT 18" O.C. - REFER TO SECTION 04200.
24. 3/4" DIA. X 8" ANCHOR BOLT WITH HOOK AT 18" O.C. - REFER TO SECTION 04200.
25. 3/4" DIA. X 8" ANCHOR BOLT WITH HOOK AT 18" O.C. - REFER TO SECTION 04200.
26. 3/4" DIA. X 8" ANCHOR BOLT WITH HOOK AT 18" O.C. - REFER TO SECTION 04200.
27. 3/4" DIA. X 8" ANCHOR BOLT WITH HOOK AT 18" O.C. - REFER TO SECTION 04200.
28. 3/4" DIA. X 8" ANCHOR BOLT WITH HOOK AT 18" O.C. - REFER TO SECTION 04200.
29. 3/4" DIA. X 8" ANCHOR BOLT WITH HOOK AT 18" O.C. - REFER TO SECTION 04200.
30. 3/4" DIA. X 8" ANCHOR BOLT WITH HOOK AT 18" O.C. - REFER TO SECTION 04200.
31. 3/4" DIA. X 8" ANCHOR BOLT WITH HOOK AT 18" O.C. - REFER TO SECTION 04200.
32. 3/4" DIA. X 8" ANCHOR BOLT WITH HOOK AT 18" O.C. - REFER TO SECTION 04200.
33. 3/4" DIA. X 8" ANCHOR BOLT WITH HOOK AT 18" O.C. - REFER TO SECTION 04200.
34. 3/4" DIA. X 8" ANCHOR BOLT WITH HOOK AT 18" O.C. - REFER TO SECTION 04200.
35. 3/4" DIA. X 8" ANCHOR BOLT WITH HOOK AT 18" O.C. - REFER TO SECTION 04200.
36. 3/4" DIA. X 8" ANCHOR BOLT WITH HOOK AT 18" O.C. - REFER TO SECTION 04200.
37. 3/4" DIA. X 8" ANCHOR BOLT WITH HOOK AT 18" O.C. - REFER TO SECTION 04200.
38. 3/4" DIA. X 8" ANCHOR BOLT WITH HOOK AT 18" O.C. - REFER TO SECTION 04200.
39. 3/4" DIA. X 8" ANCHOR BOLT WITH HOOK AT 18" O.C. - REFER TO SECTION 04200.
40. 3/4" DIA. X 8" ANCHOR BOLT WITH HOOK AT 18" O.C. - REFER TO SECTION 04200.
41. 3/4" DIA. X 8" ANCHOR BOLT WITH HOOK AT 18" O.C. - REFER TO SECTION 04200.
42. 3/4" DIA. X 8" ANCHOR BOLT WITH HOOK AT 18" O.C. - REFER TO SECTION 04200.
43. 3/4" DIA. X 8" ANCHOR BOLT WITH HOOK AT 18" O.C. - REFER TO SECTION 04200.
44. 3/4" DIA. X 8" ANCHOR BOLT WITH HOOK AT 18" O.C. - REFER TO SECTION 04200.
45. 3/4" DIA. X 8" ANCHOR BOLT WITH HOOK AT 18" O.C. - REFER TO SECTION 04200.
46. 3/4" DIA. X 8" ANCHOR BOLT WITH HOOK AT 18" O.C. - REFER TO SECTION 04200.
47. 3/4" DIA. X 8" ANCHOR BOLT WITH HOOK AT 18" O.C. - REFER TO SECTION 04200.
48. 3/4" DIA. X 8" ANCHOR BOLT WITH HOOK AT 18" O.C. - REFER TO SECTION 04200.
49. 3/4" DIA. X 8" ANCHOR BOLT WITH HOOK AT 18" O.C. - REFER TO SECTION 04200.
50. 3/4" DIA. X 8" ANCHOR BOLT WITH HOOK AT 18" O.C. - REFER TO SECTION 04200.
51. 3/4" DIA. X 8" ANCHOR BOLT WITH HOOK AT 18" O.C. - REFER TO SECTION 04200.
52. 3/4" DIA. X 8" ANCHOR BOLT WITH HOOK AT 18" O.C. - REFER TO SECTION 04200.
53. 3/4" DIA. X 8" ANCHOR BOLT WITH HOOK AT 18" O.C. - REFER TO SECTION 04200.
54. 3/4" DIA. X 8" ANCHOR BOLT WITH HOOK AT 18" O.C. - REFER TO SECTION 04200.
55. 3/4" DIA. X 8" ANCHOR BOLT WITH HOOK AT 18" O.C. - REFER TO SECTION 04200.
56. 3/4" DIA. X 8" ANCHOR BOLT WITH HOOK AT 18" O.C. - REFER TO SECTION 04200.
57. 3/4" DIA. X 8" ANCHOR BOLT WITH HOOK AT 18" O.C. - REFER TO SECTION 04200.
58. 3/4" DIA. X 8" ANCHOR BOLT WITH HOOK AT 18" O.C. - REFER TO SECTION 04200.
59. 3/4" DIA. X 8" ANCHOR BOLT WITH HOOK AT 18" O.C. - REFER TO SECTION 04200.
60. 3/4" DIA. X 8" ANCHOR BOLT WITH HOOK AT 18" O.C. - REFER TO SECTION 04200.
61. 3/4" DIA. X 8" ANCHOR BOLT WITH HOOK AT 18" O.C. - REFER TO SECTION 04200.
62. 3/4" DIA. X 8" ANCHOR BOLT WITH HOOK AT 18" O.C. - REFER TO SECTION 04200.
63. 3/4" DIA. X 8" ANCHOR BOLT WITH HOOK AT 18" O.C. - REFER TO SECTION 04200.
64. 3/4" DIA. X 8" ANCHOR BOLT WITH HOOK AT 18" O.C. - REFER TO SECTION 04200.
65. 3/4" DIA. X 8" ANCHOR BOLT WITH HOOK AT 18" O.C. - REFER TO SECTION 04200.
66. 3/4" DIA. X 8" ANCHOR BOLT WITH HOOK AT 18" O.C. - REFER TO SECTION 04200.
67. 3/4" DIA. X 8" ANCHOR BOLT WITH HOOK AT 18" O.C. - REFER TO SECTION 04200.
68. 3/4" DIA. X 8" ANCHOR BOLT WITH HOOK AT 18" O.C. - REFER TO SECTION 04200.
69. 3/4" DIA. X 8" ANCHOR BOLT WITH HOOK AT 18" O.C. - REFER TO SECTION 04200.
70. 3/4" DIA. X 8" ANCHOR BOLT WITH HOOK AT 18" O.C. - REFER TO SECTION 04200.
71. 3/4" DIA. X 8" ANCHOR BOLT WITH HOOK AT 18" O.C. - REFER TO SECTION 04200.
72. 3/4" DIA. X 8" ANCHOR BOLT WITH HOOK AT 18" O.C. - REFER TO SECTION 04200.
73. 3/4" DIA. X 8" ANCHOR BOLT WITH HOOK AT 18" O.C. - REFER TO SECTION 04200.
74. 3/4" DIA. X 8" ANCHOR BOLT WITH HOOK AT 18" O.C. - REFER TO SECTION 04200.
75. 3/4" DIA. X 8" ANCHOR BOLT WITH HOOK AT 18" O.C. - REFER TO SECTION 04200.
76. 3/4" DIA. X 8" ANCHOR BOLT WITH HOOK AT 18" O.C. - REFER TO SECTION 04200.
77. 3/4" DIA. X 8" ANCHOR BOLT WITH HOOK AT 18" O.C. - REFER TO SECTION 04200.
78. 3/4" DIA. X 8" ANCHOR BOLT WITH HOOK AT 18" O.C. - REFER TO SECTION 04200.
79. 3/4" DIA. X 8" ANCHOR BOLT WITH HOOK AT 18" O.C. - REFER TO SECTION 04200.
80. 3/4" DIA. X 8" ANCHOR BOLT WITH HOOK AT 18" O.C. - REFER TO SECTION 04200.
81. 3/4" DIA. X 8" ANCHOR BOLT WITH HOOK AT 18" O.C. - REFER TO SECTION 04200.
82. 3/4" DIA. X 8" ANCHOR BOLT WITH HOOK AT 18" O.C. - REFER TO SECTION 04200.

COPYRIGHT 1997 BY FANNING/HOWEY ASSOCIATES, INC.



THE NEW  
**CHESTERTON HIGH SCHOOL**  
FOR THE  
DUNELAND SCHOOL CORPORATION  
CHESTERTON, INDIANA

**Fanning/Howey**  
Associates, Inc.  
Architects Engineers Consultants

## WALL SECTIONS

DRAWN BY: DMR  
CHECKED BY: LEC

COMM. NO.: 95067.00  
DATE: APRIL 21, 1997

REVISIONS NO. DATE

**A5.5**